

VAG KM+IMMO Tool

Process of adding dealer key with Tango

Document History

Version	Revision Date	Description
1.0.0	2011-08-22	

1. Condition 1: At least one key can be used.

- 1) Connect "VAG KM+IMMO Tool" to both pc and car.
- 2) Click "EEPROM" button, read EEPROM and save it for backup.
- 3) Click "Dealer Key" button, open "Dealer key" dialog.
- 4) Use the prompt key chip to make key.

Nec24c32 and Nec24c64: Megamos 48

CDC VW: TP23

CDC Audi: TP25

CDC Skoda: TP24

CDC Seat: TP22

Dealer Key ✕

Please use the Megamos 48 chip
Use TagKey Tool, Tango, AD90, Zedbull or other tools to read and write data.

Step 1 : Use tools to read data of Transponders Page 1

Page(Word) 1

Step 2 : Calculate the dealer key data

Step 3 : Write the following data to corresponding Transponders Page

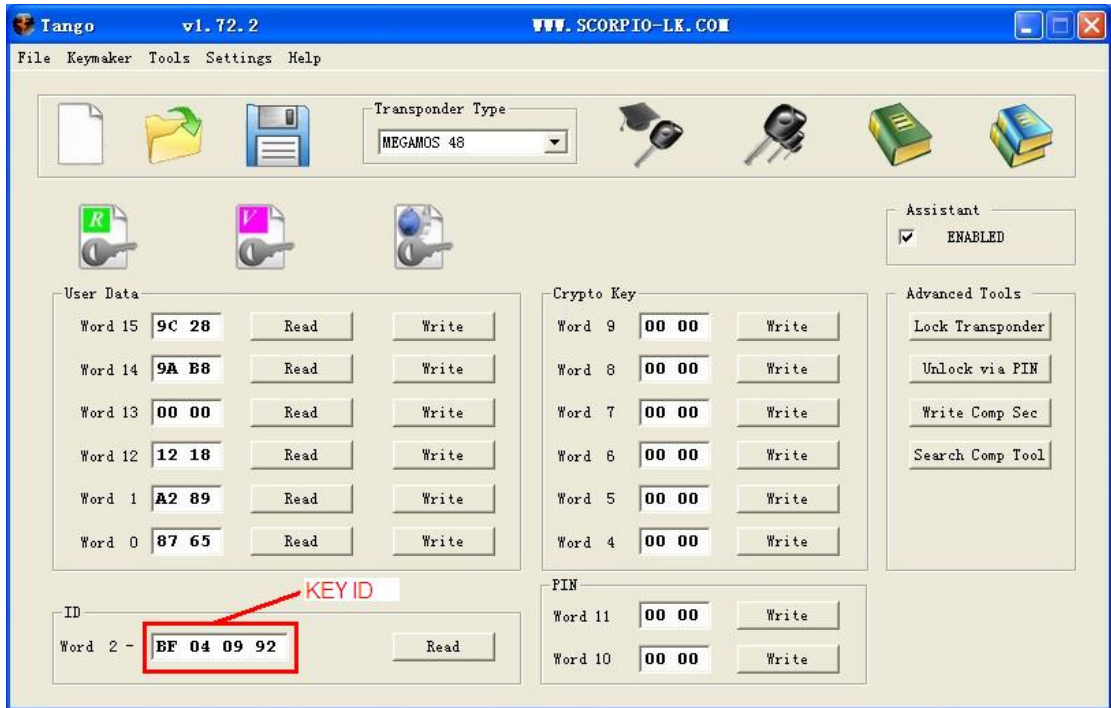
Page(Word) 11	<input type="text"/>	Page(Word) 10	<input type="text"/>
Page(Word) 9	<input type="text"/>	Page(Word) 8	<input type="text"/>
Page(Word) 7	<input type="text"/>	Page(Word) 6	<input type="text"/>
Page(Word) 5	<input type="text"/>	Page(Word) 4	<input type="text"/>

Step 4 : Write Transponders Page 1 data, lock key

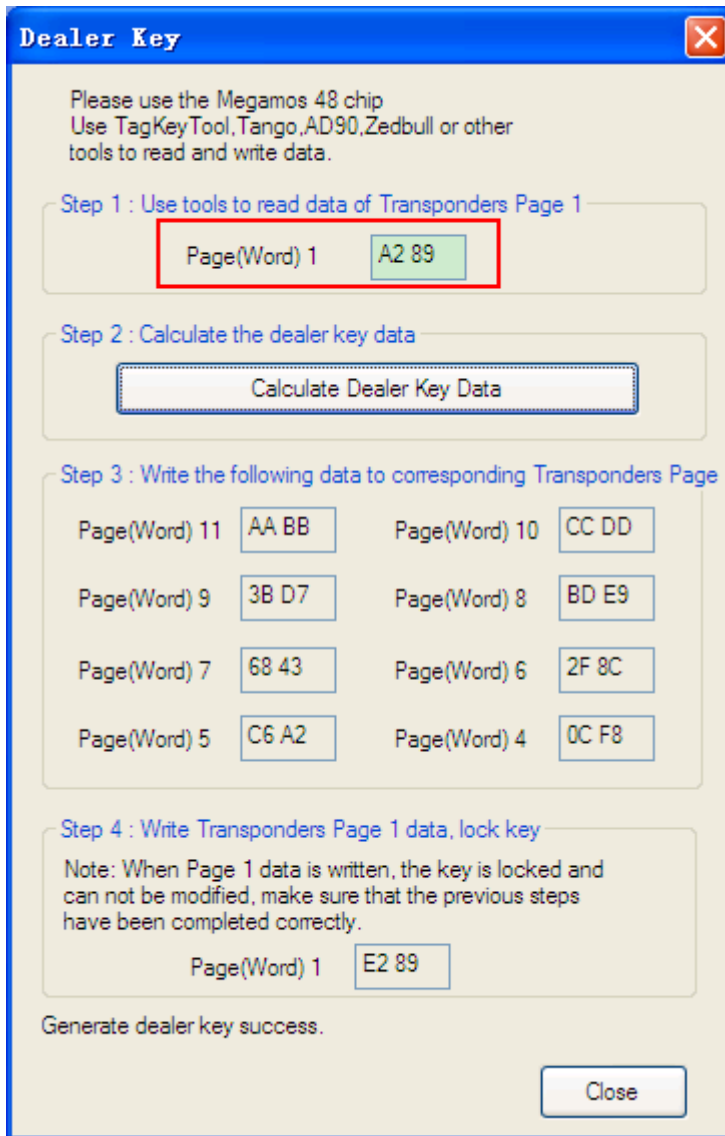
Note: When Page 1 data is written, the key is locked and can not be modified, make sure that the previous steps have been completed correctly.

Page(Word) 1

5) Switch to Tango, read "Word 1" data and "Key ID" data.



- 6) Switch back to “Dealer key” dialog, input “Page(Word) 1” data, and click “Calculate Dealer Key Data” button.



- 7) Switch to Tango, write Word 6-11(for Nec24c32 and 24c64, you need write additional Word 4 and Word 5).
- 8) In Tango, write Word 1 to lock the key.
- 9) Switch back to “Dealer key” dialog, click “Close”, and then click “IMMO” button to open “Immo Info” dialog.

10) Input "New Key ID" with key id data read from step 5, then click "Add Key" button.

The screenshot shows a software window titled "Immo Info" with a blue title bar and a close button in the top right corner. The window is divided into several sections:

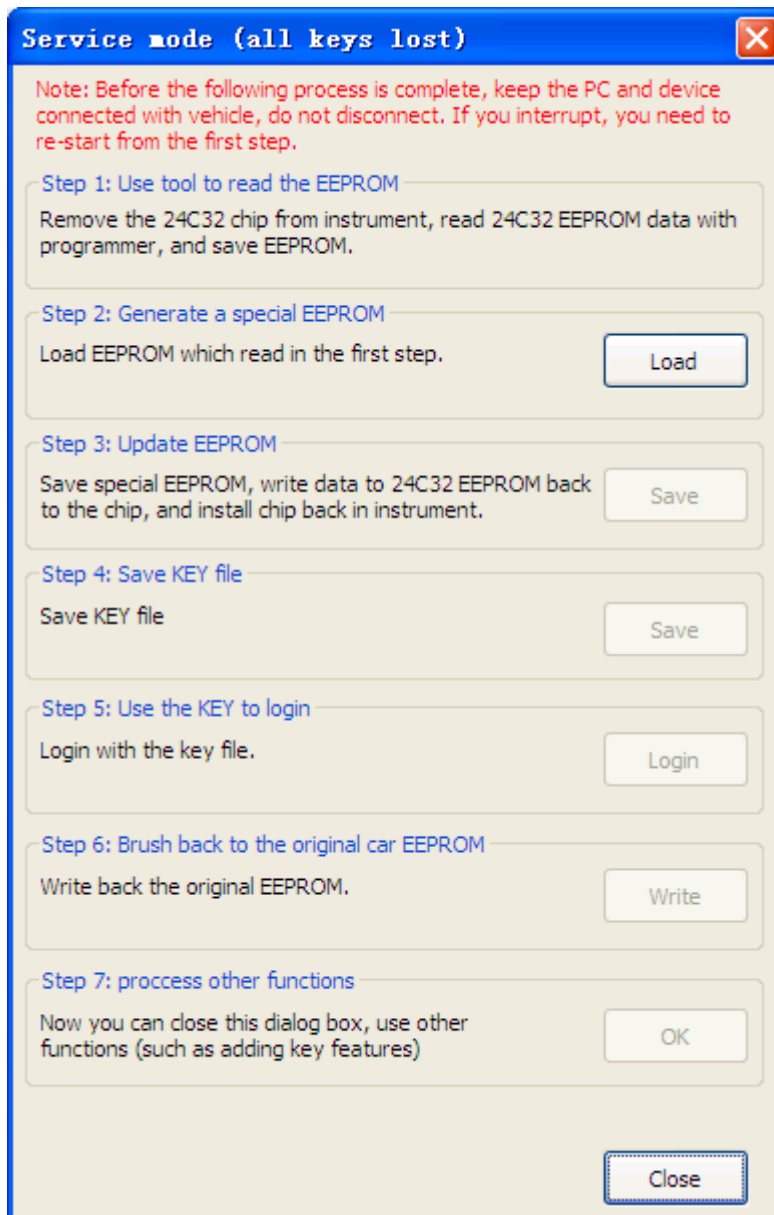
- VIN Section:** Contains input fields for "VIN" (LSVRR21T2B2377082), "PIN" (11786), and "Key Type" (VW).
- Existing Key Number:** A dropdown menu showing the value "5".
- KeyID Section:** Eight input fields labeled KeyID1 through KeyID8, containing hexadecimal values: KeyID1 (BE FB 5C E5), KeyID2 (BE FB 66 67), KeyID3 (BE FB 1E 6A), KeyID4 (BE FB 5C E6), KeyID5 (BE FB 5C E7), KeyID6 (FF FF FF FF), KeyID7 (FF FF FF FF), and KeyID8 (FF FF FF FF).
- Modify VIN Section:** A "New VIN" input field and a "Modify VIN" button.
- Add Key Section:** A "New Key ID" input field containing "BF 04 09 92" and an "Add Key" button. This section is highlighted with a red rectangular border.
- Close Section:** A "Close" button at the bottom right.

At the bottom left of the window, the text "Read immo info success." is displayed.

11) Finish.

2. Condition 2: All keys are lost

- 1) Connect “VAG KM+IMMO Tool” to both pc and car.
- 2) Click “Service Mode” button to open “Service Mode” dialog.



- 3) Remove the 24C32 chip from instrument, read 24C32 EEPROM data with programmer, and save EEPROM.
- 4) Switch to “Service Mode” dialog, load EEPROM.

- 5) Save special EEPROM, write data to 24C32 EEPROM back to the chip, and install chip back in instrument.
- 6) Save KEY file.
- 7) Login with the key file.
- 8) Click “Write” button to write back the original EEPROM (via OBDII).
- 9) Close “Service Mode” dialog, start adding dealer key from [Step 3 of Condition 1](#) above.

Note: Before the process is complete, keep the PC and device connected with vehicle, do NOT disconnect. If you interrupt, you need to re-start from the first step.