

## HxH SCAN



HxH Scan is a professional compact car diagnostic tool, it is the automotive fault diagnostic scanner .

we provide near dealer level(O.E.) operations such as ECU reprogramming, Key coding, Airbag configuration, Body Computer initialization, Injectors Programming and configuration, coding, etc .

it can be installed on most equipments that have Windows operating system WINDOWS XP/2000 , VISTA, WIN7 and Standard USB and Standard Bluetooth technology...

It enormously enhances the compatibility between automobile examination and other automobile maintenance equipments, and it solves the problem caused by space and distance effectively.

**Vehicle List:**

- 1 - Europe: This section includes diagnostic programs for European vehicles.  
ALFA ROMEO, AUDI, BMW, CITROEN, DACIA, FIAT, FORD, LANDROVER, BENZ, OPEL,  
PEUGEOT, RENAULT, SEAT, SKODA, VOLVO, VOLKSWAGEN
- 2 - Japanese : This section includes diagnostic programs for Japanese vehicles.  
DAIHATSU , HONDA, MAZDA , MITSUBUSHI, NISSAN, SUZUKI, TOYOYA , LEXUS
- 3 - Korean and Asian : This section includes diagnostic programs for Asian vehicles.  
BYD, CHERY, CHEVROLET, DAEWOO, GEELY, GREATWALL, HYUNDAI, IKCO, KIA, LIFAN,  
PROTON, TATA
- 4 - America: This section includes diagnostic programs for American vehicles. :  
CHRYSLER, FORD, GM
- Others: This diagnostic program can test all vehicles with OBD2/EOBD and CAN-OBd.

**Function:**

- Read failure code
- Clear failure code
- Read channel data
- Data stream preservation and contrast function
- Component test and basic setting
- Safe login and program
- Maintenance records management
- Data stream waveform analysis
- On-line software upgrade
- Standard USB port
- Standard Bluetooth

**System:**

- Tire system
- Door system
- Engine system
- SRS control module
- ABS control system
- Power control module
- Air conditioner system
- Theft-deterrent system
- Instrument panel system
- Automatical transmission
- Power-Assisted steering system

**Content List:**

HxH main hardware

Main cable

OBD2 adapter

Can-Bus adapter

Usb cable

Dongle

CD

FIAT 3P+DAIHASU 4P + SUZUKI 3P cable

MITSUBISHI 12P + OBDII 16P cable

12V male cigarette lighter cable

Toyota/Mazda-17P Adapter

Two tongs battery cable

Daewoo/Gm-12p Adapter

Nissan-14p Adapter

Toyota-17P Adapter

CITROEN 2P cable

Benz-38P Adapter

AUDI 2P+2P cable

Bmw-20P Adapter

Honda-3p Adapter

Kia-20p Adapter

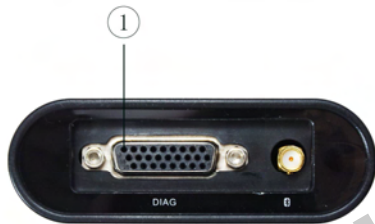
L-3 cable

S-3 cable

## Introduction

### Function and Feature

- OE level coverage for European, Asian, American and Chinese cars
- Supports Multi-language
- Multi-functions
- Standard Bluetooth
- CAN-BUS with high/low speed
- Continuous software update online



### Layout of Main Unit

The main unit layout is as shown in left picture.

1. DIAG
2. Standard Bluetooth
3. USB
4. TXD indicator
5. RXD indicator
6. Power indicator
7. Power supply (+12V) port

## Technical Parameters

PC configuration

CPU: Pentium 4 (or Celeron R series) or above

Memory: Minimum 256MB

- a) Operating system: WINDOWS XP/2000 , VISTA,WIN7.  
Power supply: DC 12V, AC 110~250V 50/60Hz;
- b) Power: DC 9~15V
- c) Standard Bluetooth communication distance: around 30 Meters (depending on environment)
- d) Bluetooth transfer speed is 2,4 Mbps
- e) Memory temperature: -30~90°C
- f) Working temperature: -10~70°C
- g) Humidity: <90%

## Configuration



**Name:** HxH Main hardware

**Function:** Data transfer connecting with vehicle



**Name:** USB DONGLE KEY

**Function:** USB Dongle for software, Connect to PC/Laptop



**Name:** Installation CD

**Function:** Used to install operating software in PC



**Name:** Main Cable

**Function:** Connect the main unit and connectors with vehicle



**Name:** OBD-16 connector

**Function:** Used for testing all vehicles compliant with OBDII, EOBD and J1962 with 16-pin DLC



**Name:** CAN-BUS adapter

**Function:** Used for testing all vehicles compliant with OBDII, CAN-BUS with 16-pin DLC



**Name:** BMW-20 connector

**Function:** Used for testing BMW vehicles equipped with a 20-pin DLC



**Name:** BENZ-38 connector

**Function:** Used for testing Mercedes-Benz vehicles equipped with a circular 38-pin DLC



**Name:** Daewoo/Gm-12p Adapter

**Function:** Used for testing GM/Daewoo vehicles equipped with a 12-pin DLC



**Name:** Kia-20p Adapter

**Function:** Used for testing KIA vehicles equipped with a 20-pin DLC



**Name:** Mazda-17 connector

**Function:** Used for testing MAZDA vehicles equipped with a 17-pin DLC



**Name:** Toyota-17P Adapter

**Function:** Used for testing Toyota/Lexus vehicles with a rectangular 22-pin DLC



**Name:** MITSUBISHI 12P + OBDII 16P cable

**Function:** Used for testing Mitsubishi and Hyundai vehicles equipped with a 12-pin or 16-pin DLC



**Name:** Honda-3p Adapter

**Function:** Used for testing HONDA and ACURA vehicles equipped with a 3-pin DLC





**Name:** FIAT 3P+DAIHASU 4P + SUZUKI 3P cable  
**Function:** Used for testing FIAT 3-pin DLC , DAIHATSU 4-pin DLC, SUZUKI 3-pin DLC.



**Name:** AUDI 2P+2P cable  
**Function:** Used for testing VW/Audi vehicles with a 4-pin (2x2) DLC



**Name:** Nissan-14 connector  
**Function:** Used for testing Nissan and Infiniti vehicles equipped with a 14-pin DLC



**Name:** CITROEN 2P cable  
**Function:** Used for testing Citroen vehicles equipped with a 2-pin DLC



**Name:** L-3 cable  
**Function:** Used for testing vehicles equipped with circuit



**Name:** S-3 cable  
**Function:** Used for testing vehicles equipped with circuit





**Name:** Battery power cable  
**Function:** power supply from battery



**Name:** Cigarette lighter power cable  
**Function:** power supply via cigarette lighter on car

[www.uobd2.com](http://www.uobd2.com)

[www.uobd2.com](http://www.uobd2.com)

## Operation

Software installation & cable connection

### Diagnostic software installation

Steps for installation of HxH SCAN software:

(1). Put the HxH CD into CD driver in PC.

Setup is Autorun .

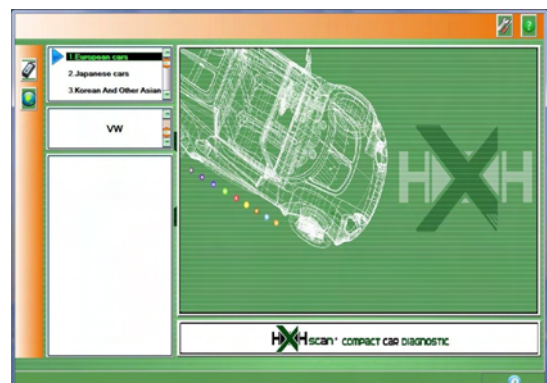
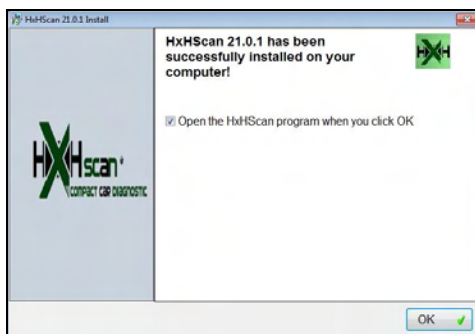
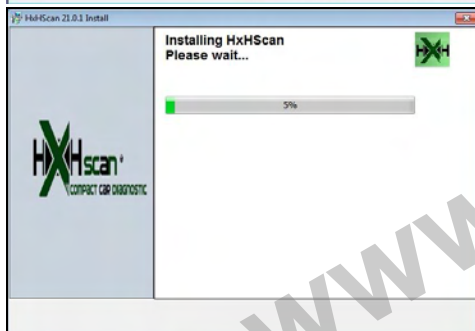
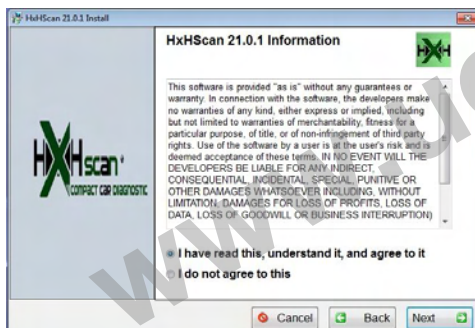
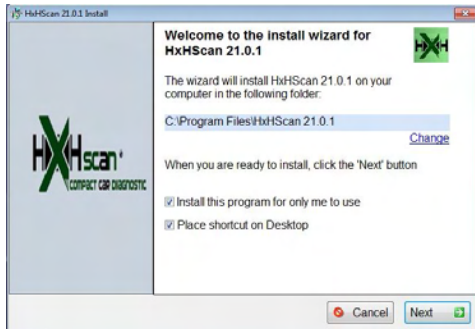
Installation information will popup.

Click on [**Next**] to continue.

(2). In HxH SCAN installation interface, click on [**I agree this license**] and then [**Next**].

(3). Choose the path for installation. The default path is C:\Program Files\ HxH  
To continue, click on [**Next**].

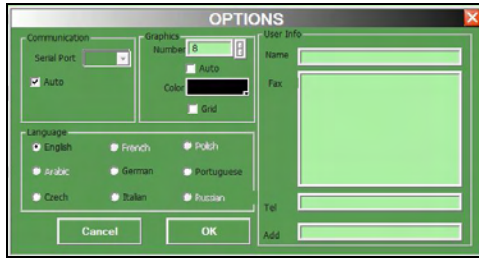
( 4 ). Connect USB DONGLE KEY to PC , and run software on desk .Software will open



### System Setting

#### Language Setting

HxH supports Multi-language\*. Choose any language needed under [**working language**] and press [**OK**] to finish language setting.

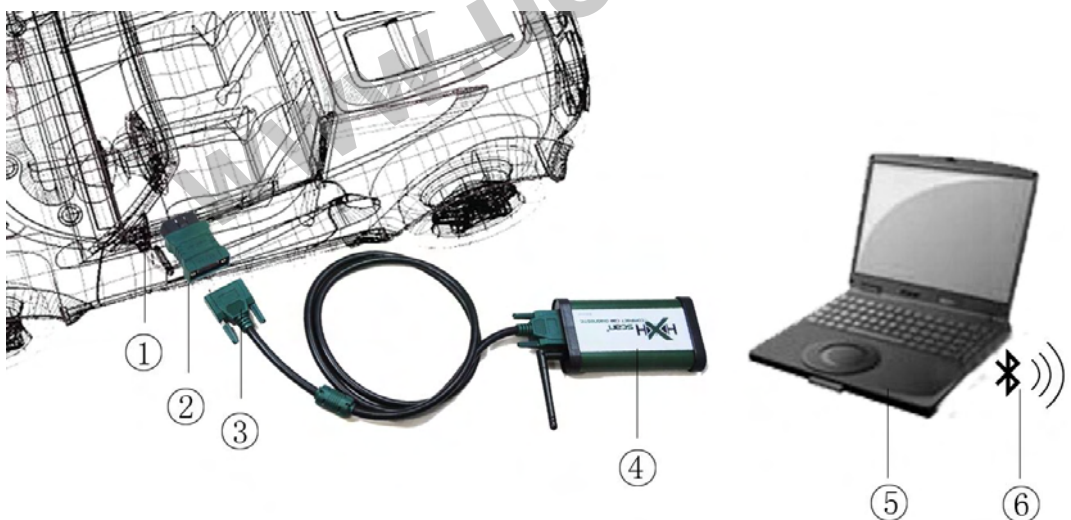


#### Select communication port



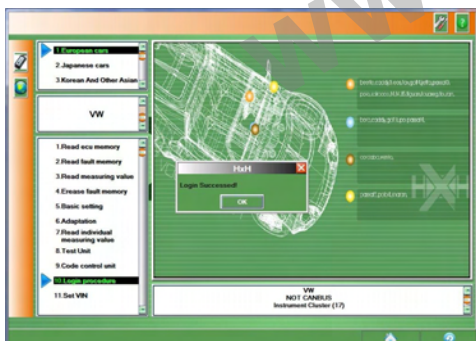
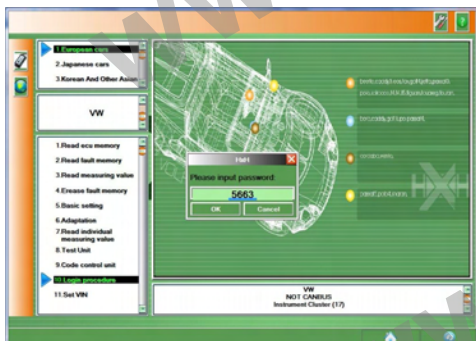
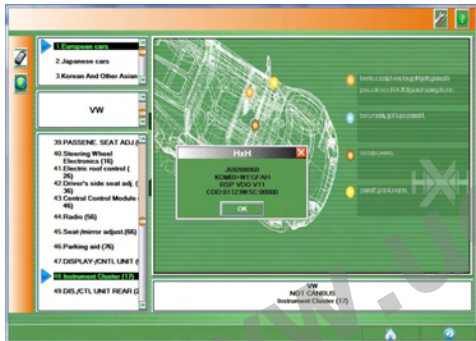
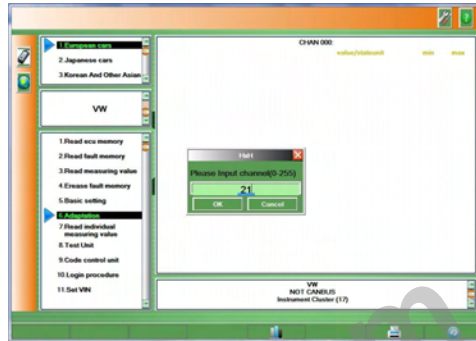
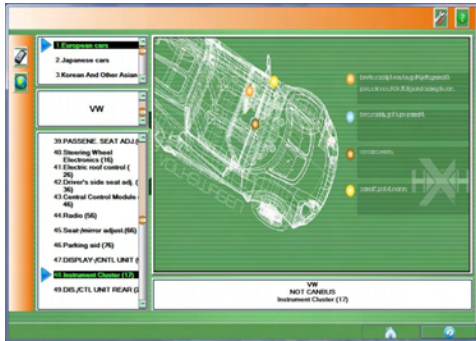
### Cable connection

Please check the following chart for connection instruction:









[www.uobd2.com](http://www.uobd2.com)

[www.uobd2.com](http://www.uobd2.com)

[www.uobd2.com](http://www.uobd2.com)

[www.uobd2.com](http://www.uobd2.com)