

EasyDiag user's manual

Modified: 2013-9-2

Precautions on operating vehicle's ECU

- Do not disconnect the vehicle inner consume when the ignition switch is on, so as to avoid the sensors or the ECU damage.
- Do not place the magnetic object near the ECU in order to avoid the failure of the circuitry and components.
- Do cut off the power supply of ECU system before welding on the vehicle.
- Pay more attention to the ECU and the sensors when the operation is next to them.
- Ground yourself when you disassemble PROM, otherwise ECU and sensors will be damaged by static electricity.
- Do connect ECU harness connector firmly, otherwise electronic elements, such as IC inside ECU, will be damaged.

Precautions on operation

- The instrument is a precision electronic instrument. Pay more attention when in use, do not have it dashed.
- The equipment power is supplied by 12v battery voltage; do not use other voltage power.
- Turn off the ignition switch when connect or disconnect the diagnostic connector.
- Do not keep EasyDiag Pin Connector plugged into your vehicle overnight, be sure to always remove connector once testing and/or diagnosis is complete. Failure to do so may result in drained or weakened battery.

Contents

1. Overview	1
1.1 Product introduction	1
1.2 Parameters	1
1.3 Features.....	2
1.4 Accessories.....	2
2. Configuration and Structure	3
3. Connection and Installation	4
3.1 EasyDiag connection	4
3.2 Software download and install	5
4. How to Use	6
4.1 Initial use	6
4.2 Register connector	11
4.3 Acquire software	12
4.4 My Data.....	23
4.5 What new	26
4.6 User Account.....	27
4.6.1 Register connector	28
4.6.2 Modify Personal Information.....	29
4.6.3 Change password	29
4.6.4 Set up safe password question	30
4.6.5 Forgot password.....	31
4.6.6 Skip peeler	32
4.6.7 Select Serial Number	32
4.6.8 Connector firmware upgrade file download	34
4.6.9 One key upgrade	34
4.6.10 Only display available models	35
4.7 More.....	35
4.7.1 Quick Guide.....	35
4.7.2 User's Guide.....	36
4.7.3 Purchase Instruction.....	36
4.7.4 Version Update.....	36

4.7.5 About	36
5. How to Diagnose	36
5.1 Preparation	36
5.2 Diagnosis	36

1. Overview

1.1 Product introduction

EasyDiag, based on iOS/Android operation system design, research and development, is an internet vehicle trouble diagnosis tester customized for mobile intelligent terminals. After being connected with mobile terminal through Bluetooth, it achieves for x-431 serial product the full diagnostic functions, which include reading DTCs(diagnosis trouble code), clearing DTCs, reading data stream, action test and special functions, Meanwhile, through your intelligent mobile terminal, you can access internet to get your demanded information, share and exchange information, etc.



Fig1.1

1.2 Parameters

- Working voltage: 9~15V
- Working average current: about 35mA
- Static current: about 25mA
- Working temperature: -20 to 55°C (-4 to 131°F)

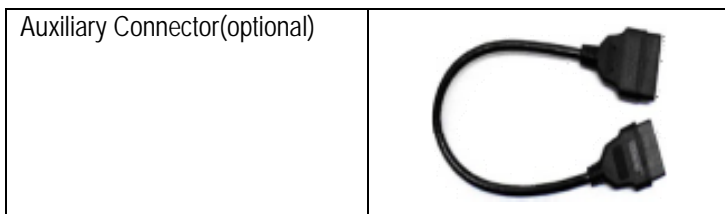
- Storage temperature: -30 to 70°C (-22 to 158°F)
- Storage humidity: <80%
- Working humidity: <60%
- Net weight: about 26g

1.3 Features

- Most of the electronic system of vehicle, including Europe, Asia, America and domestic models, can be detected;
- Applies to iOS and Android system, simple interface, elegant and easy to operate;
- Bluetooth communication;
- Online download diagnostic software (single vehicle model or combined software models). Many ways to pay, and many ways to combine, reduces your one-shot investment.
- Online share and communicate diagnostic technology with core of community concept and service.
- One-key upgrade

1.4 Accessories

EasyDiag	
Password envelope	



2. Configuration and Structure

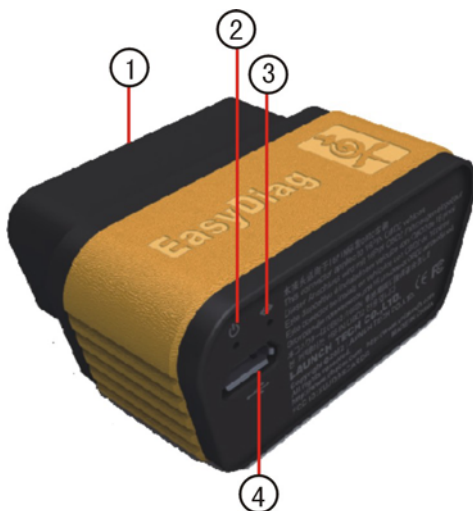


Fig2.1

①	OBD-16 diagnostic connector	To connect vehicle's OBD2 diagnostic socket
②	Power indicator	It will light up once EasyDiag is plugged into OBD2 diagnostic socket.

③	Communication indicator	It will flash when EasyDiag is communicating with mobile device or EasyDiag is resetting.
④	Micro USB port	To connect PC for data transmission or upgrade via USB cable

3. Connection and Installation

3.1 EasyDiag connection

NOTE:

1. Remove connector once testing and/or diagnosis is complete;
2. Maybe it is difficult to plug or unplug connector in some vehicles because of the varied position of the DLC, but auxiliary connector can help you to avoid this problems.
3. **Please turn off the ignition switch before connecting and then turn the key to the ON position after the EasyDiag has been plugged in.**

Step 1: Locate the vehicle's DLC socket. It is usually located under the dashboard, towards the driver's left knee area.

Step 2: Plug the EasyDiag connector into DLC socket. The connector's power indicator will light up to signify communication and you will hear an audible beep.



Fig3.1

3.2 Software download and install

The EasyDiag app is free to download in Android Play Store.

Step 1: Turn on your Android Smart Device.

Step 2: Go into the Google or Android Play Store (Google Play):




Fig3.2

Google Play can be found in the following url as well:
<http://play.google.com/store> .

Step: 3: Input the keyword "Easy Diag" in the search bar and then click the Easy Diag software icon to download.

4. How to Use

Click EasyDiag client software icon “”

4.1 Initial use

Note: before operating, you need to log in software first.

If your Android phone's Bluetooth is closed, a request as Fig4.1 will be seen once open the software,

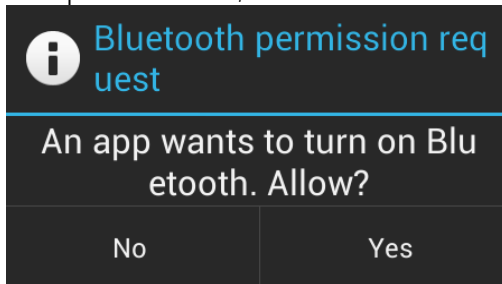


Fig4.1

Select “yes” to turn on Bluetooth, or you can not communicate with EasyDiag

After selection, you will see some illustrations; glance down these illustrations by sliding the screen to left can make you have a general understanding for the use of the software.

The next step, you will see the disclaimer which contains some precautions and warnings about using, please read it carefully.

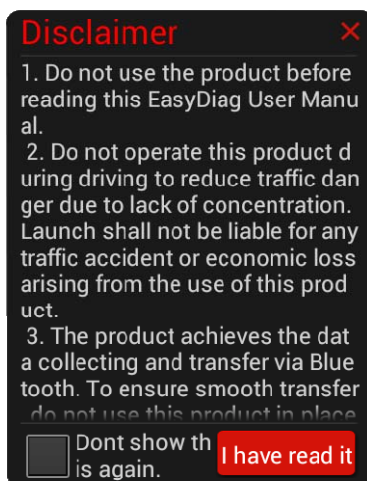


Fig4.2

When reading is finished, click "I've read it" to enter login interface, see Fig4.3. If you don't want to read this again, choose "Don't show this again"; the disclaimer will not appear next time.

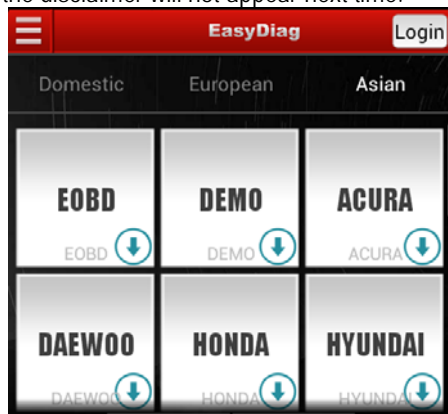


Fig4.3

Please login before starting to operate. Click "Login" to open login interface.

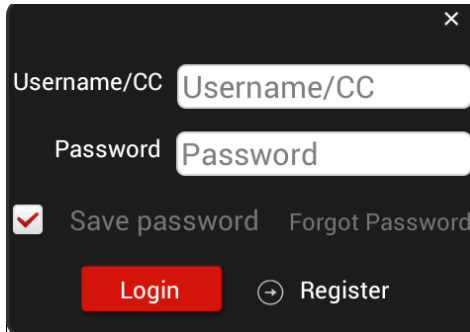
A dark-themed login window with a close button (X) in the top right corner. It contains two input fields: "Username/CC" and "Password". Below the "Password" field is a checked checkbox labeled "Save password" and a link "Forgot Password". At the bottom, there are two buttons: a red "Login" button and a "Register" button with a right-pointing arrow icon.

Fig4.4

For existing users, input your account to login.

For new users, click "→" to register.

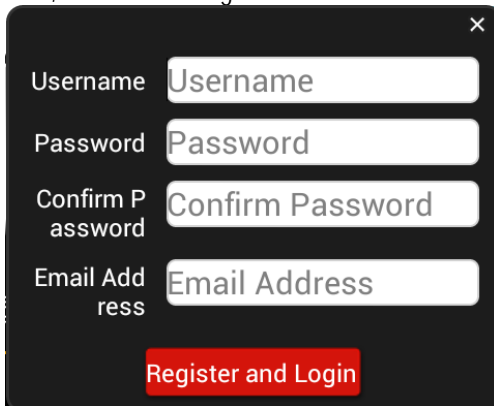
A dark-themed registration window with a close button (X) in the top right corner. It contains four input fields: "Username", "Password", "Confirm Password", and "Email Address". At the bottom, there is a red button labeled "Register and Login".

Fig4.5

Input the necessary messages, and then click "Register and Login". Once pressed, you will see the page as below.

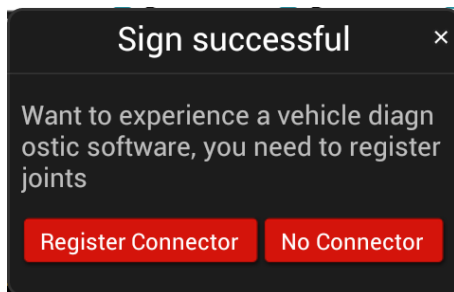


Fig4.6

If you have a new connector need to registered, it is suggested to choose "Register Connector" item, once selected, the screen will jump into "Register Connector" page directly.

NOTE: When registration is successful, a confirm letter will be sent to your registered Email.

Once login, the interface as below will pop out.

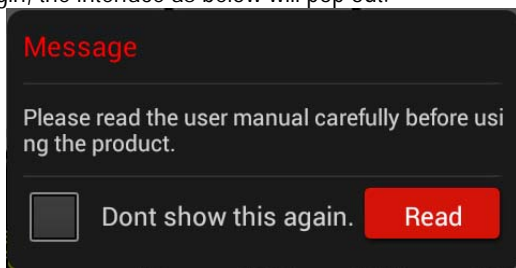


Fig4.7

Click "read" to open quick start guide. And also you can open it in "More" item.

The software initial interface, see Fig4.8.

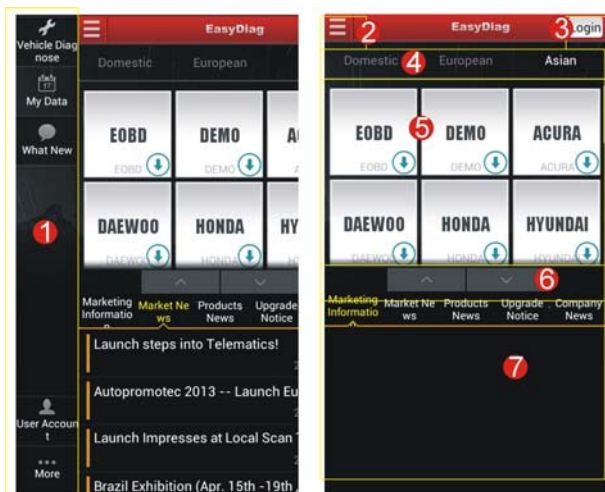




Fig4.8

- 1: Function selection list,
- 2: Function extension button
- 3: Login button
- 4: Vehicle origin selection,
- 5: Car model selection area, the icon  means this car's diagnostic software has not been downloaded, if you want to diagnose it, click it to acquire the software.
- 6: Full screen display switch button
- 7: Partial display area

If you don't have a EasyDiag, you can click DEMO icon  to get into the demo function interface, and experience the vehicle diagnosis function

If you have already got an EasyDiag, please continue the registration.

4.2 Register connector

Plug the EasyDiag into DLC socket and turn on the ignition switch.
Click "User Account" to enter the interface as shown in Fig4.9.

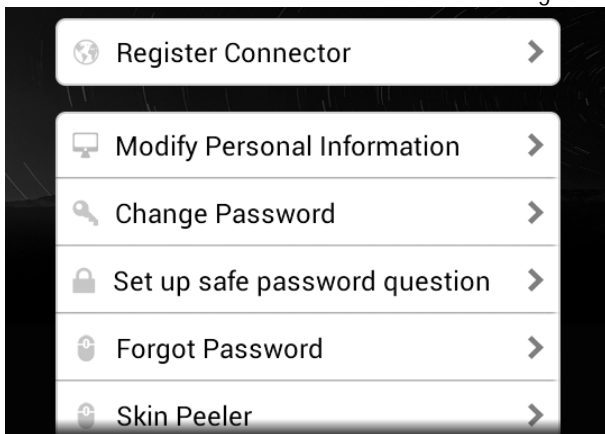


Fig4.9

Click "Register Connector", the screen will display registration interface, see Fig4.10

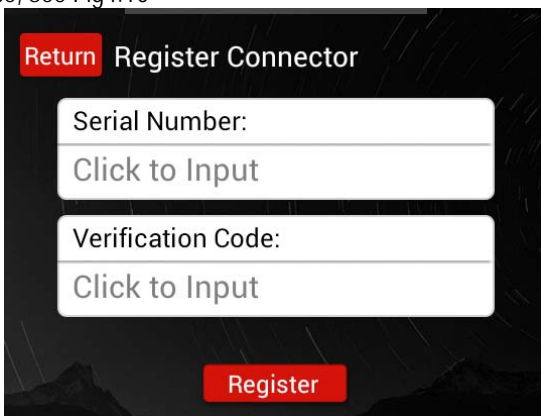


Fig4.10

Input Serial Number and verification code, then click "Register" to complete registration.


Note: the product Serial Number and verification code are available in the password envelope. See Fig4.11



Fig4.11

4.3 Acquire software

Before software download, please complete software acquisition

The icon  means the diagnostic software has not been downloaded, if you want to diagnose this car, please click it to acquire the diagnostic software.

Before purchase, you should select a product serial number, see Fig4.12.

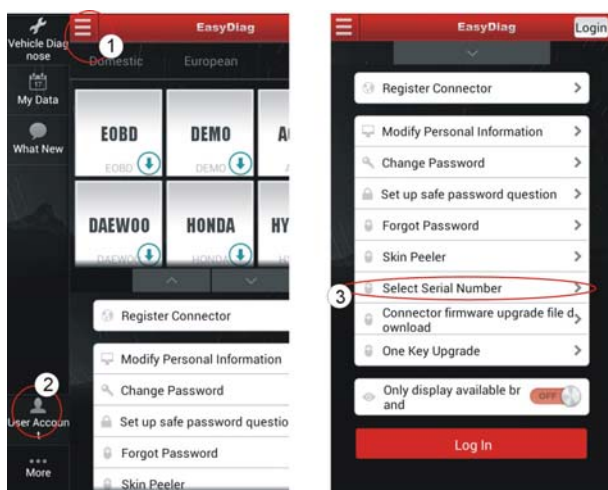


Fig4.12

In the EasyDiag app, click the brand icon software which you want.

Take "ACURA" as an example.

Click "ACURA" icon, the screen will display the software message, see Fig4.13.

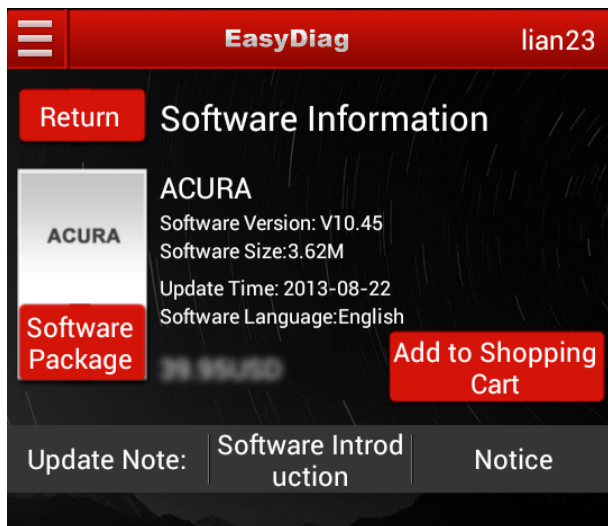


Fig4.13

If only this software to be purchased, click "Add to cart".
If you also want to add other software into the cart, close this page and select others add to shopping cart, also you can click "Software Package" to purchase software in packages or individually.

NOTE: Software package only supplies to individual regions.

When the selection is completed, Press "Create order".

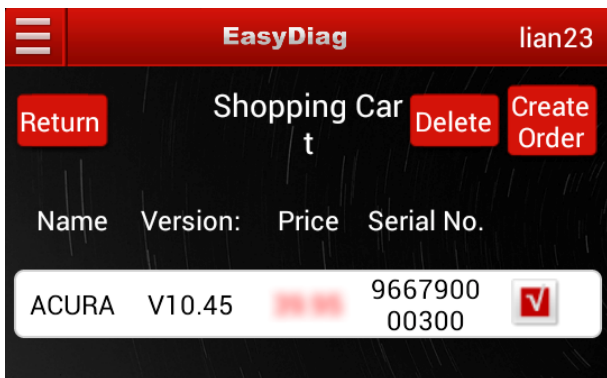


Fig4.14

Order list will be created, see Fig4.15

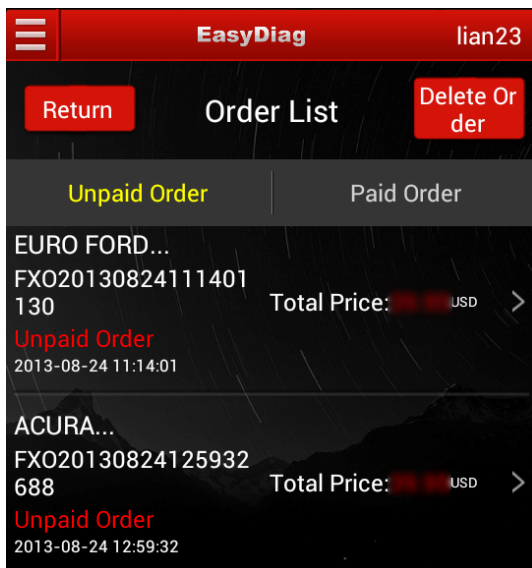


Fig4.15

After you click the space which marked in red circle in Fig4.15, it

would provide some useful information as in the Fig4.16, such as diagnosis soft order name, order number, product serial number, total price, order status, and order time. Please comfire those information, and take a note about the order number which is the most important.

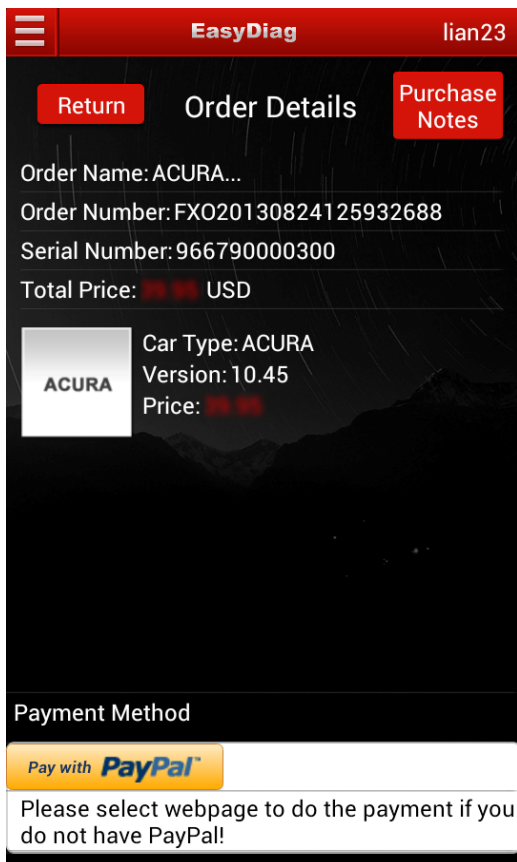


Fig4.16

PAYMENT: You can select pay with PayPal or pay on website; here we choose the latter to illustrate how to pay. As for PayPal method, you can follow the on-screen instructions to complete.

After click button, the browser will automatic jump into LAUNCH user center login page.

Use the Login name and password, which you have registered before, which is same as EasyDiag app login account.

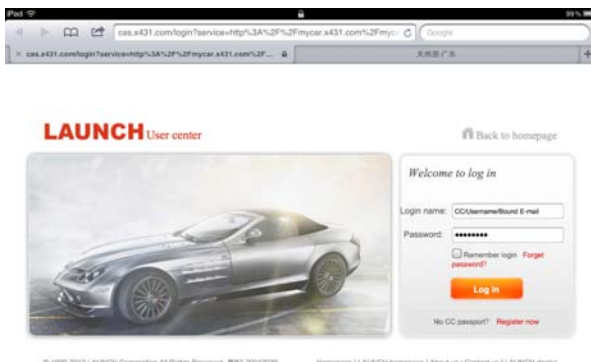


Fig4.17

After login successfully, the web page will include order information. Please confirm the order information, especially for the order number. See Fig4.18

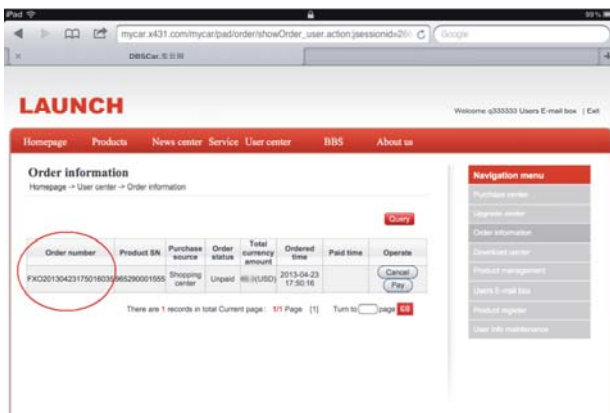


Fig4.18

Click "PAY", and conform purchasing the diagnosis software you ordered.

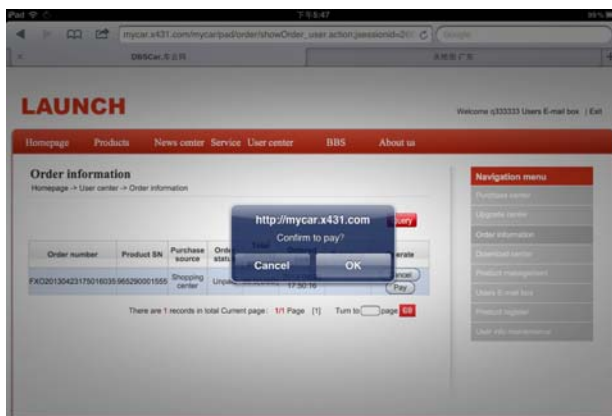


Fig4.19

In the Fig4.20, there are two options, one is called "支付宝", which is use for Chinese currency. The other one is "PayPal", which for USD. If you use USD to pay, Please select PayPal.

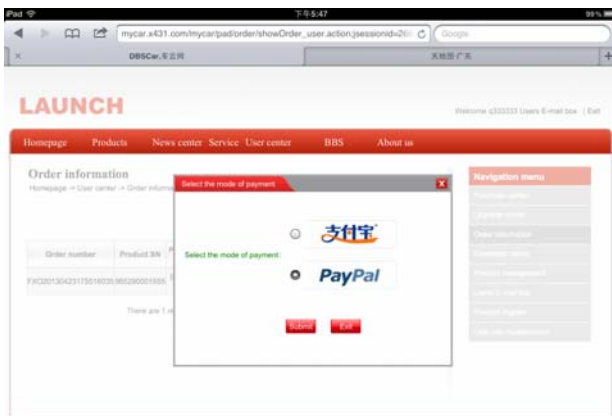


Fig4.20

You must have a PayPal account before you made the payment.

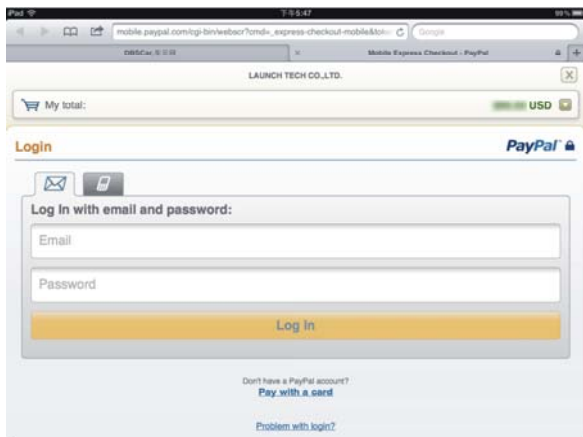


Fig4.21

In Fig4.21, login your PayPal account, which is your email address, and password, and click "continue". See Fig4.22.

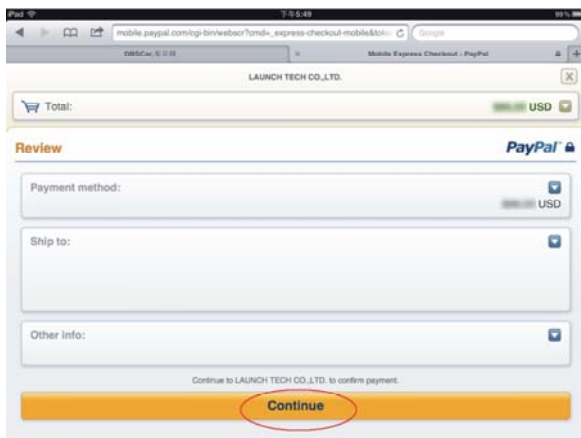


Fig4.22

Pay success, see Fig4.23.

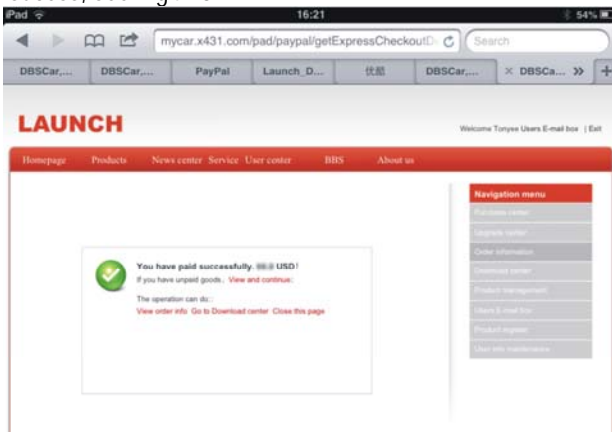


Fig4.23

DOWNLOAD: After made payment, please move back to EasyDiag app. And click the diagnosis software icon which have already paid. See Fig4.24

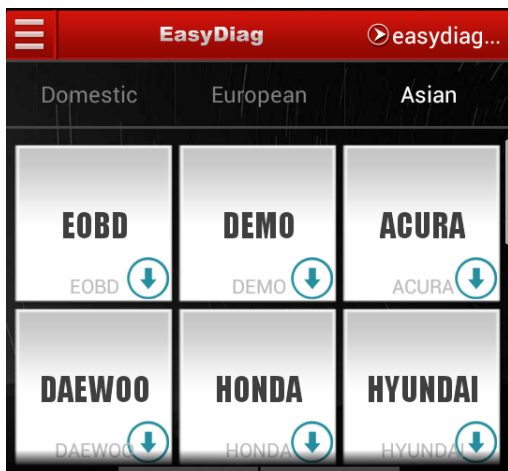


Fig 4.24

Take "DEMO" as an example, press "Check Download". See Fig4.25

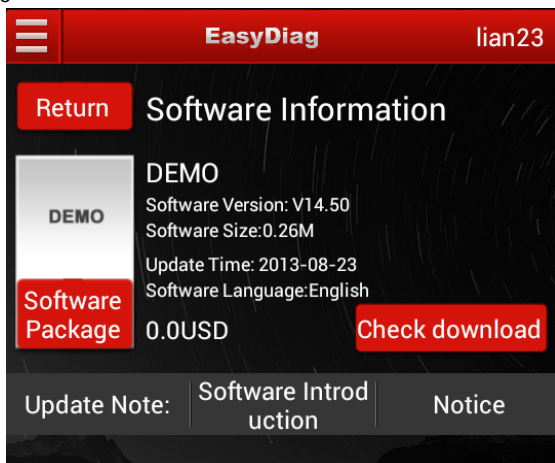


Fig 4.25

Select HONDA, and start to download. See Fig4.26

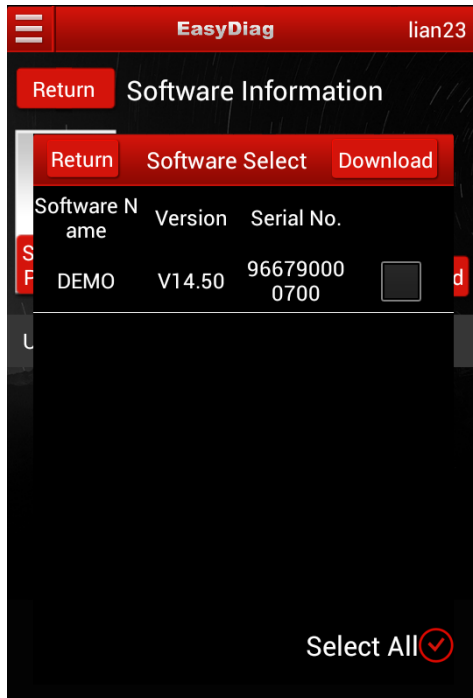


Fig4.26

Select "Download". See Fig4.27

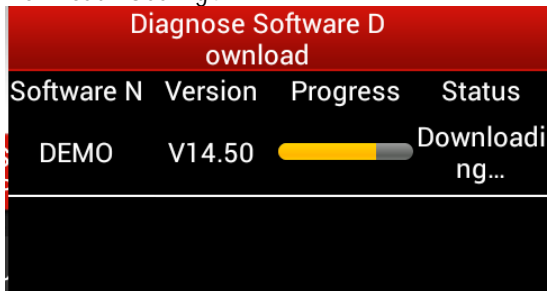


Fig4.27

Download until completed

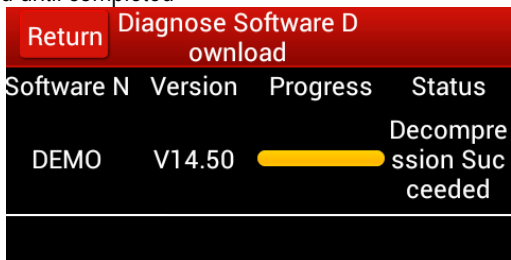



Fig4.28

Press "return" to back to the when diagnosis software download is completed, the icon on the right bottom  will disappear. See Fig4.29.

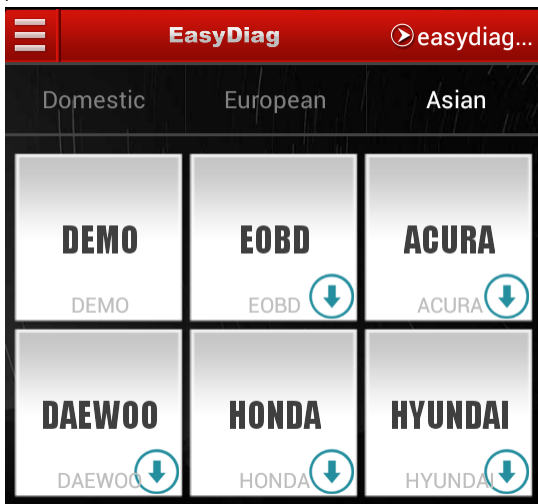


Fig4.29

4.4 My Data

In "My Data" you can see diagnosis reports, operated records, also

you can generate and pay the order in "My order" and "Shopping cart".

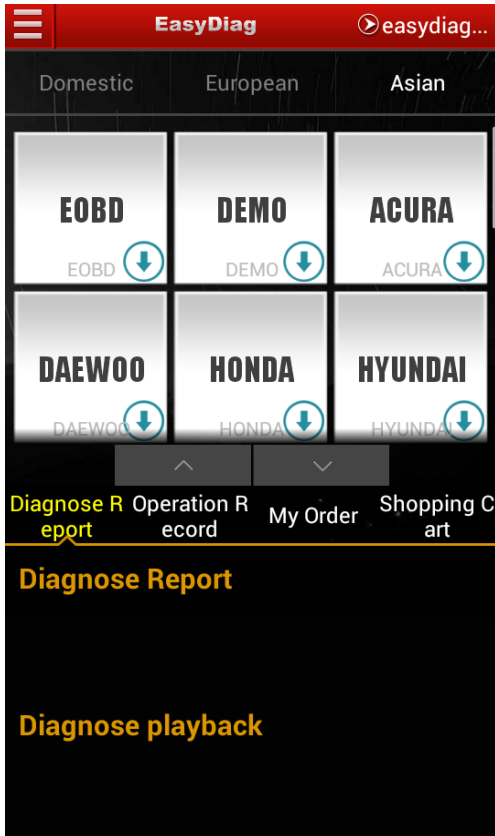


Fig4.30

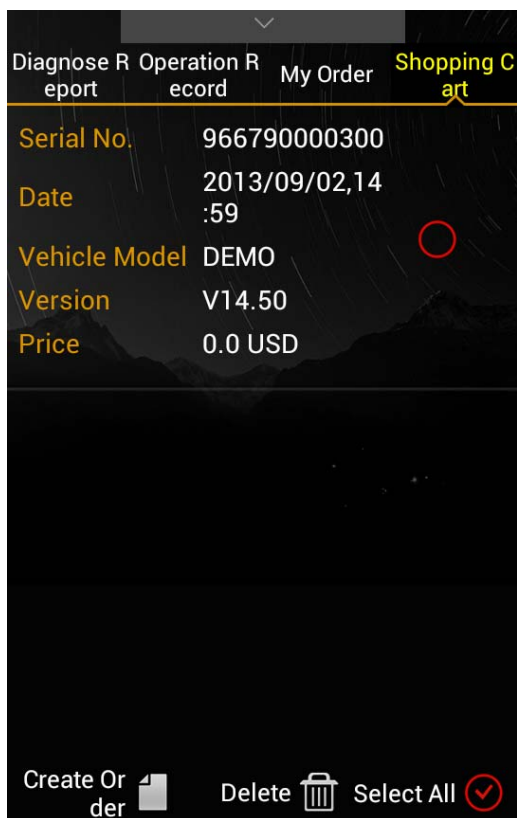


Fig4.31

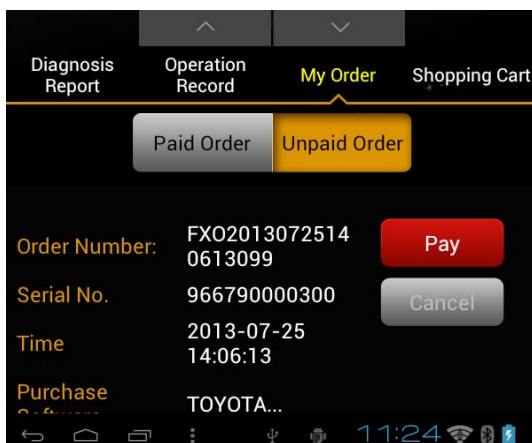


Fig4.32

4.5 What new

Here you can see the latest news of our company, market, product and upgrade, etc.

NOTE: Marketing information can not be seen until the corresponding SN is selected.

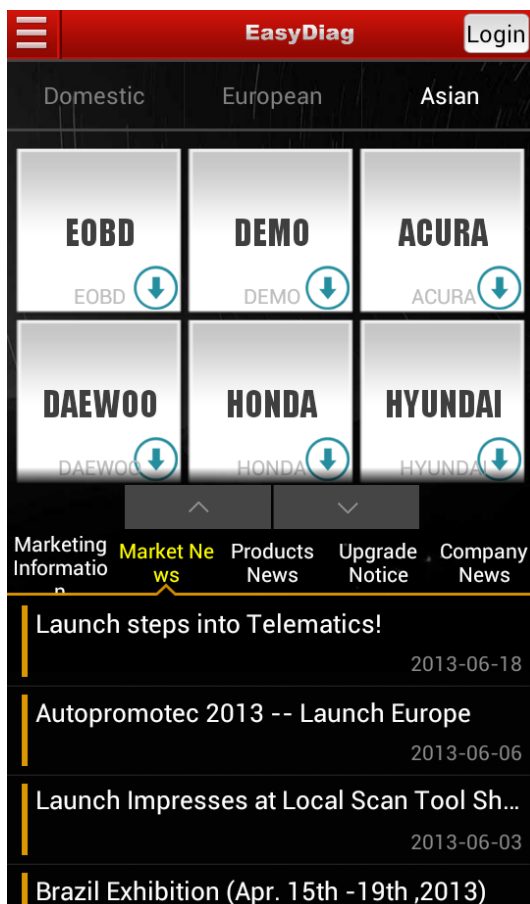


Fig4.33

4.6 User Account

For registration management, see Fig4.34

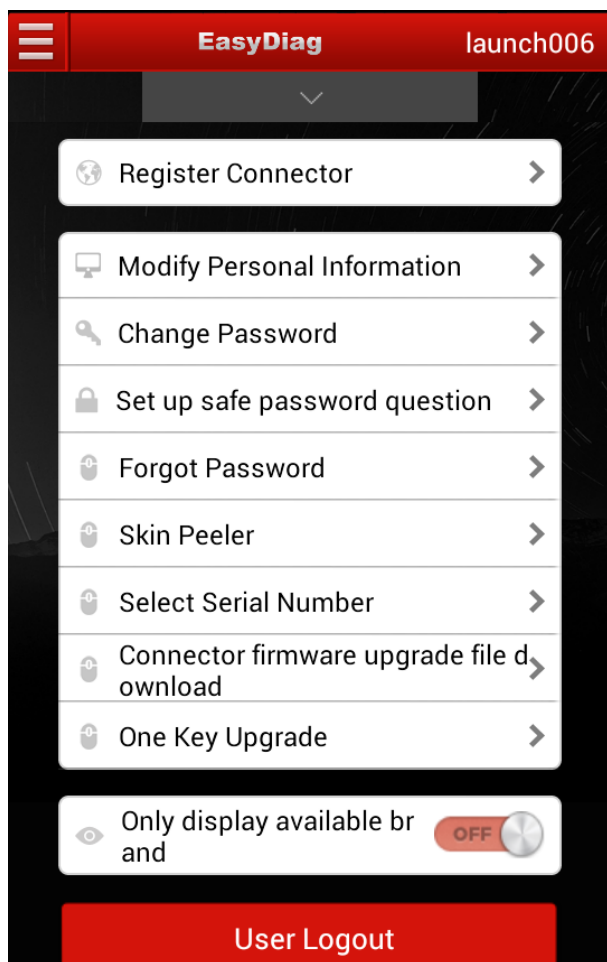


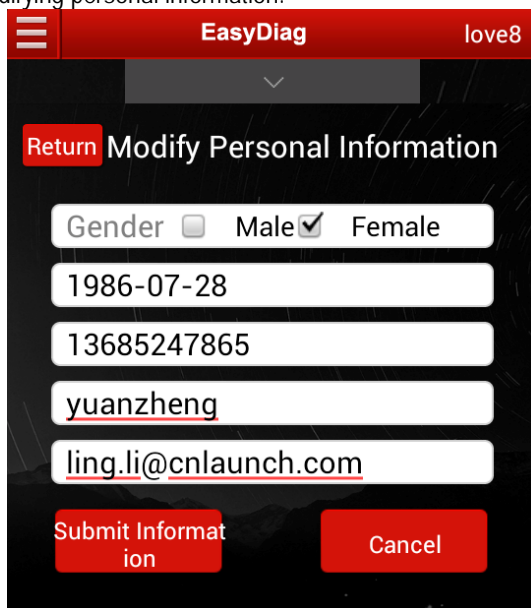
Fig4.34

4.6.1 Register connector

See Fig4.2.

4.6.2 Modify Personal Information

For modifying personal information.

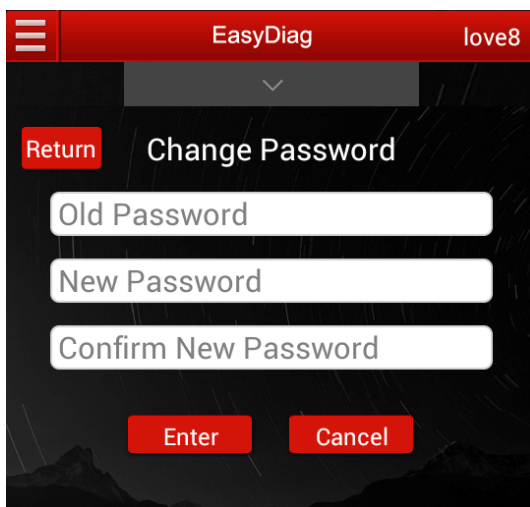


The screenshot shows a mobile application interface for modifying personal information. At the top, there is a red header bar with a hamburger menu icon on the left, the text "EasyDiag" in the center, and the user ID "love8" on the right. Below the header, there is a "Return" button and the title "Modify Personal Information". The form contains several input fields: a "Gender" field with radio buttons for "Male" (checked) and "Female"; a date field containing "1986-07-28"; a phone number field containing "13685247865"; a text field containing "yuanzheng"; and an email field containing "ling.li@cnlaunch.com". At the bottom, there are two red buttons: "Submit Information" and "Cancel".

Fig4.35

4.6.3 Change password

If you want to change password, you can click this item, don't forget to login before operating.



F4.36

4.6.4 Set up safe password question

These questions are necessary when you want to get back the password you forgot accidentally. So set the questions easy to remember for you maybe a sensible choice.

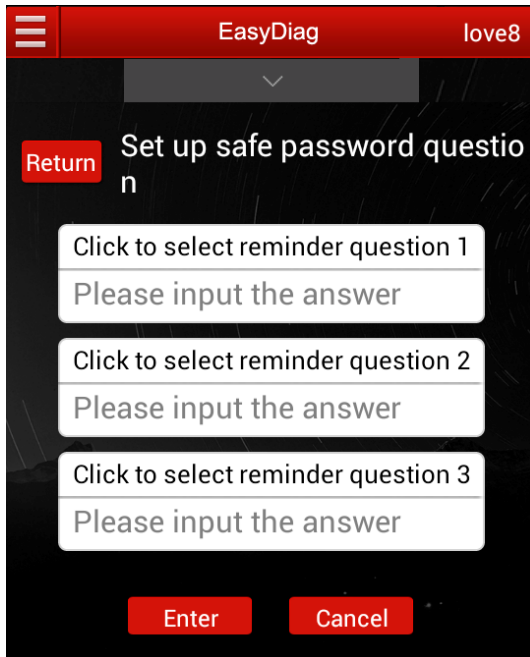


Fig4.37

Note: please keep this question well in order to get back the password you forgot accidentally.

4.6.5 Forgot password

When you forgot your password accidentally, you can get back your password by selecting this function.

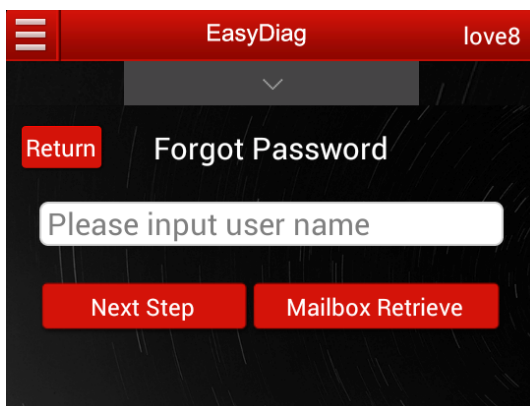


Fig4.38

4.6.6 Skip peeler

For changing display style

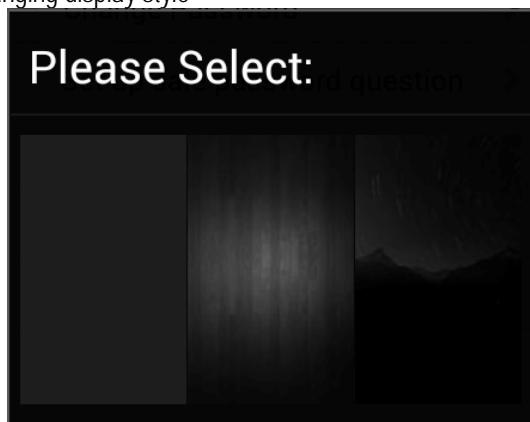


Fig4.39

4.6.7 Select Serial Number

It is necessary to select serial number before diagnosis and

purchasing, etc. you can select a serial number when prompted in this place.

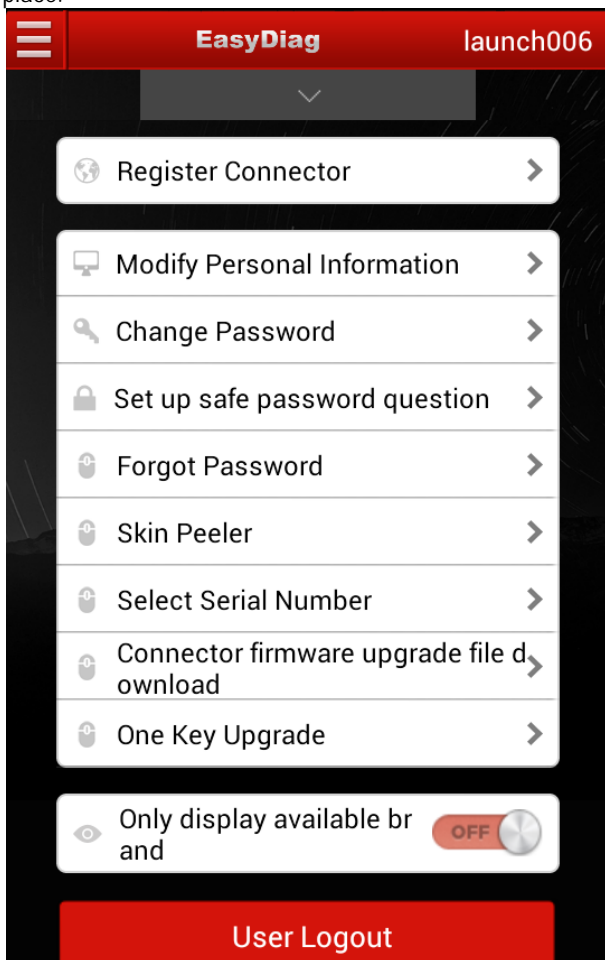


Fig4.40

4.6.8 Connector firmware upgrade file download

To download connector firmware file.

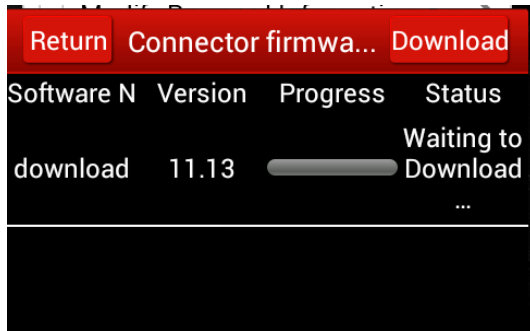


Fig4.41

4.6.9 One key upgrade

This function is designed for upgrade convenience; you can select a Variety of software to upgrade at a same time.

Return	One Key Upgrade	Next Step
Vehicle Model	Old Version	New Version
YOUNGLUSTUS		V10.01 <input type="checkbox"/>
SPRINTER		V19.53 <input type="checkbox"/>
SMART		V17.27 <input type="checkbox"/>
IRKIA		V12.06 <input type="checkbox"/>
HM		V10.02 <input type="checkbox"/>
GMSA		V10.60 <input type="checkbox"/>
Select All <input checked="" type="checkbox"/>		

Fig4.42

4.6.10 Only display available models

When the switch is set to ON, the initial interface will display the manufacturer which had already download diagnostic software.

4.7 More

4.7.1 Quick Guide

You can view quick start guide by selecting this function.

4.7.2 User's Guide

You can view user's guide by selecting this function.

4.7.3 Purchase Instruction

You can view purchase instruction by selecting this function. In the document you can get a help for using and purchasing software.

4.7.4 Version Update

If there is a latest version issued on the internet, you can update your EasyDiag app by this selection.

4.7.5 About

To view the software information

5. How to Diagnose

5.1 Preparation

Before diagnosis, please confirm the following word has completed

1. EasyDiag has registered, see 4.2;
2. Diagnostic software has downloaded. see 4.3;
3. EasyDiag has linked with vehicle, see 3.2;
4. EasyDiag has connected with Android equipment via Bluetooth. See 5.2
5. The ignition switch is ON position.

5.2 Diagnosis

First, select Account then select the serial number,

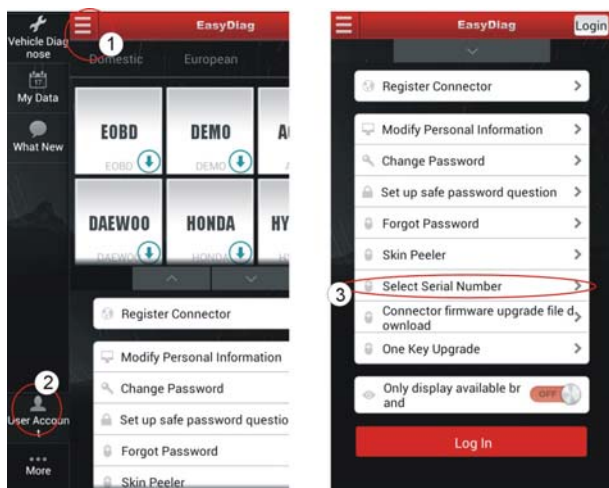


Fig5.1

Select a car brand you need to diagnose; here we take “demo” as an example for explaining how to diagnose.

Click “Demo”, system will prompt you to pair Bluetooth.

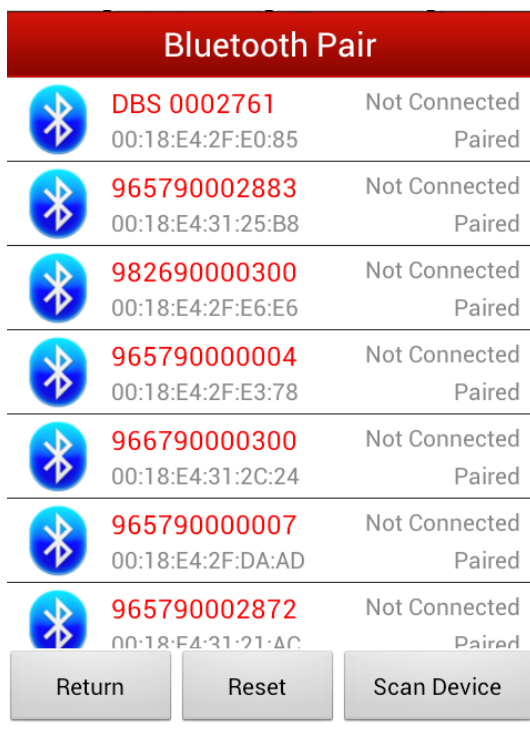


Fig5.2

NOTE: The serial number of the connector can not be seen until the ignition switch is on.

Select product Serial Number (96679xxxxxx) to pair.

Select demo again and select software version.

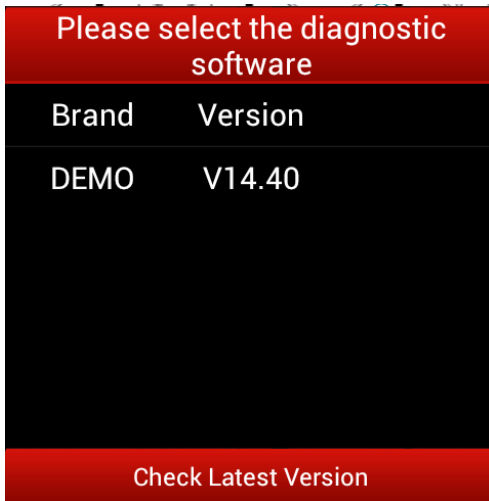
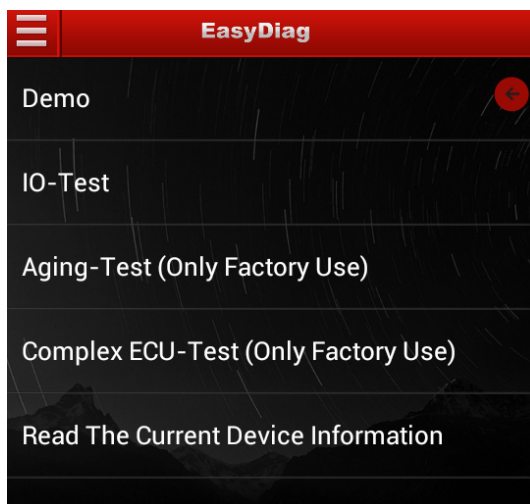


Fig5.3

After selection, system will start to initialize.

NOTE: the following diagnosis operation would be varying with different vehicle model, please follow prompts to operate.

When initialization is complete, system will display interface as shown in Fig5.4,



Fin5.4

Select Demo to go into vehicle's system selection.

Click "←", quit Demo.

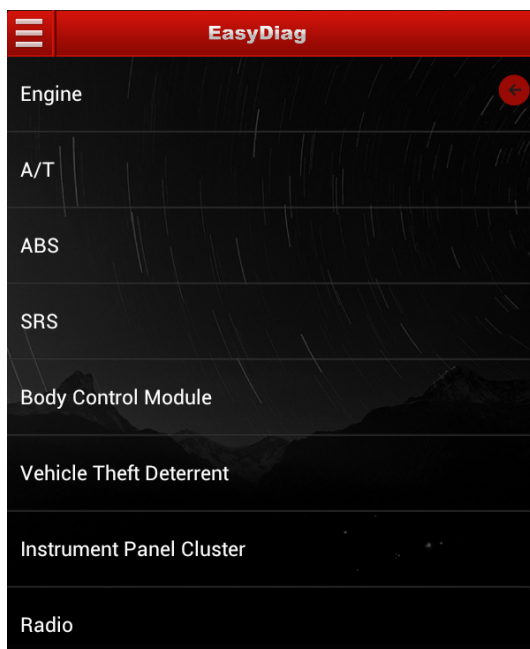


Fig5.5

Select the desired system. Here we take engine as an example.

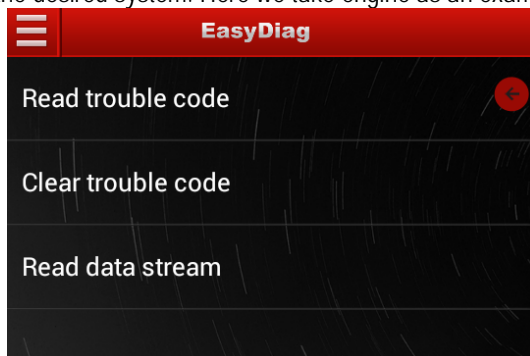


Fig5.5

A. Read trouble code

Click "Read trouble code", the screen will display diagnostic results, see Fig5.6

Click "", return to function selection interface.

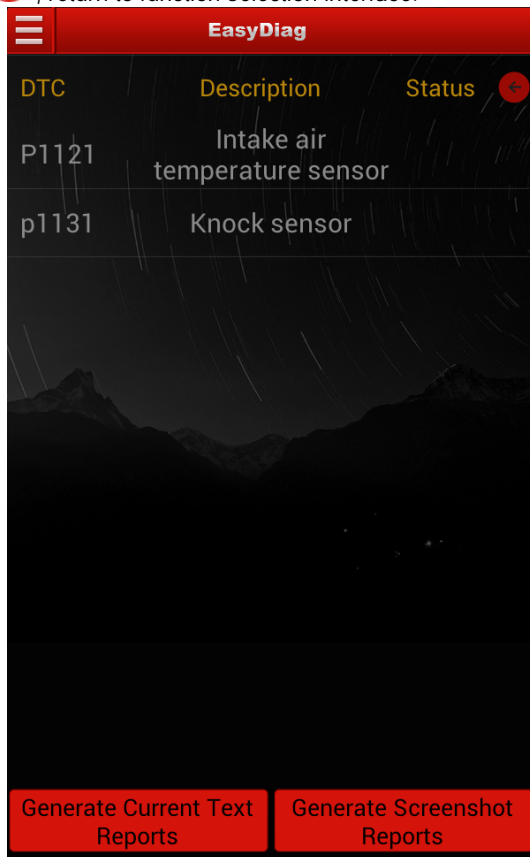


Fig5.6

Generate Current Text Reports: save the current diagnostic results in text form to "My space".

Generate screenshot reports: save the current diagnostic results in screenshot form to "My space".

B. Clear trouble code

Click "Clear trouble code", the system will automatically delete the Current exist trouble code. See Fig5.7.

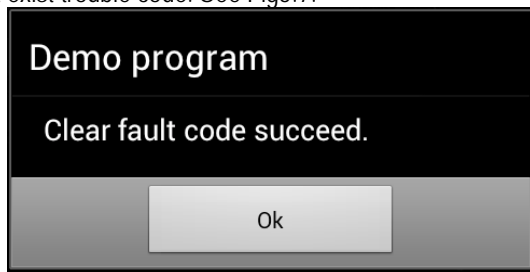



Fig5.7

Note: the trouble code would not clear until the trouble was ruled out.

C. Read data stream

Click "Read data stream", the screen will display DataStream item, see Fig5.8; click the circle before the item you desired, If you want to select all, Click "Select All", after choosing, click "Confirm".

Click "" to return to the above interface

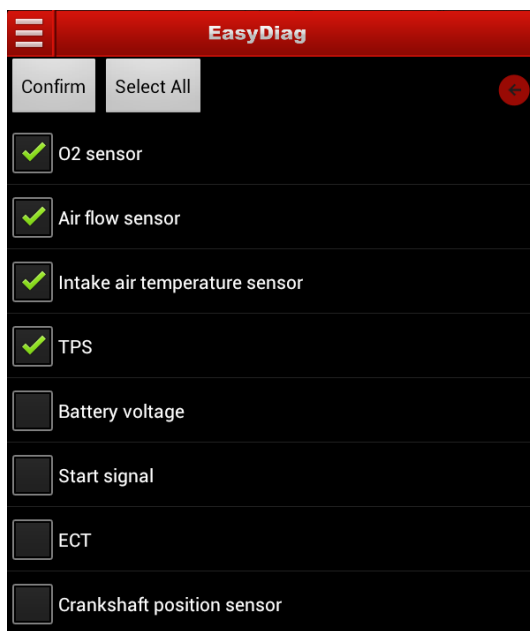



Fig5.8

When communication is completed, the system will display real-time data of the selected item, see Fig5.9



The screenshot shows the EasyDiag application interface. At the top, there is a red header with a hamburger menu icon on the left and the text "EasyDiag" in the center. Below the header, there is a "Data stream" button and a red pause icon. The main content is a table with three columns: "Data Stream N...", "Value", and "Unit". The table contains three rows of data. At the bottom of the screen, there are three red buttons: "Start to record", "Generate Current Text Reports", and "Generate Screenshot Reports".

Data Stream N...	Value	Unit
O2 sensor	2734	mV
Air flow sensor	875	HZ
Intake air temperature sensor	18	degree C

Fig5.9

Click on one item, the system will display data changes in waveform, see Fig 5.10, or view up to 4 waveforms by pressing "Data stream", if you want to suspend reading, click "⏸", click "▶" to continue the reading operation, click "◀", stop reading and return to the function selection interface.

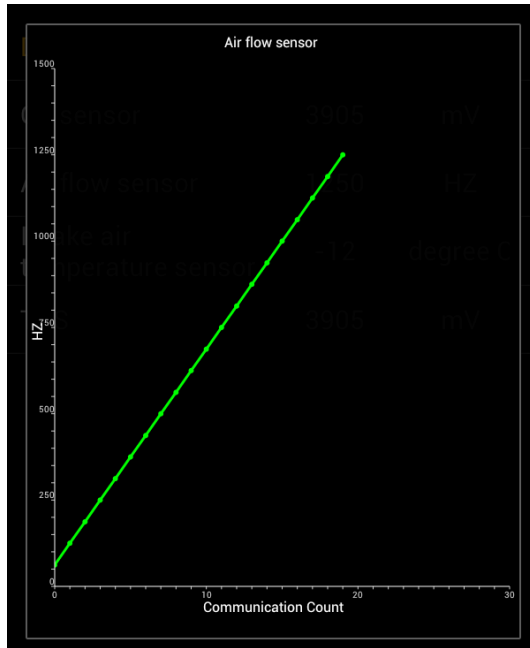


Fig5.10

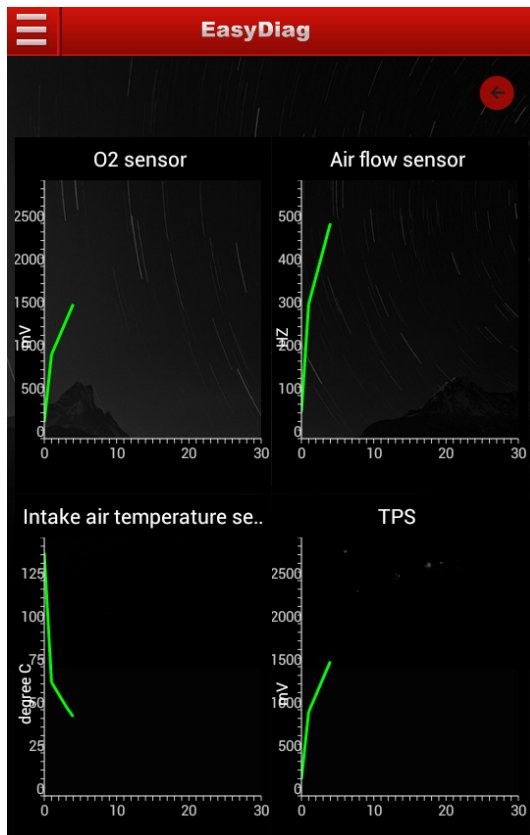


Fig5.11

Start to record: the system will record data in real-time and generates a text report;

Generate current Text Reports: save the current time data in text form;

Generate Screenshot Reports: save the current time data in screenshot form;

Warranty

THIS WARRANTY IS EXPRESSLY LIMITED TO PERSONS WHO PURCHASE LAUNCH PRODUCTS FOR PURPOSES OF RESALE OR USE IN THE ORDINARY COURSE OF THE BUYER'S BUSINESS.

LAUNCH electronic product is warranted against defects in materials and workmanship for one year, from date of delivery to the user.

This warranty does not cover any part that has been abused, altered, used for a purpose other than for which it was intended, or used in a manner inconsistent with instructions regarding use.

Disclaimer

THE ABOVE WARRANTY IS IN LIEU OF ANY OTHER WARRANTY, EXPRESSED OR IMPLIED, INCLUDING ANY WARRANTY OF MERCHANTABILITY OR FITNESS FOR A PARTICULAR PURPOSE.

Order Information

Replaceable and optional parts can be ordered directly from your LAUNCH authorized tool supplier. Your order should include the following information:

1. Quantity
2. Part number
3. Item description

Customer Service

If you have any questions on the operation of the unit, please contact us:

Tel: +86-0755-84528767

If your unit requires repair service, return it to the manufacturer with a copy of the sales receipt and a note describing the problem. If the unit is determined to be in warranty, it will be repaired or replaced at no charge. If the unit is determined to be out of warranty, it will be repaired for a nominal service charge plus return freight. Send the unit pre-paid to:

Attn: Customer Service Department
LAUNCH TECH. CO., LTD.
Launch Industrial Park,

North of Wuhe Avenue,
Banxuegang, Bantian,
Longgang, Shenzhen, Guangdong
P.R.China, 518129

Launch website: <http://www.cnlaunch.com>

Car cloud website: <http://www.x431.com>

Statement: *LAUNCH reserves the rights to make any change to product designs and specifications without notice. The actual object may differ a little from the descriptions in the manual in physical appearance, color and configuration. We have tried our best to make the descriptions and illustrations in the manual as accurate as possible, and defects are inevitable, if you have any question, please contact local dealer or after-sale service center of LAUNCH, LAUNCH does not bear any responsibility arising from misunderstandings.*