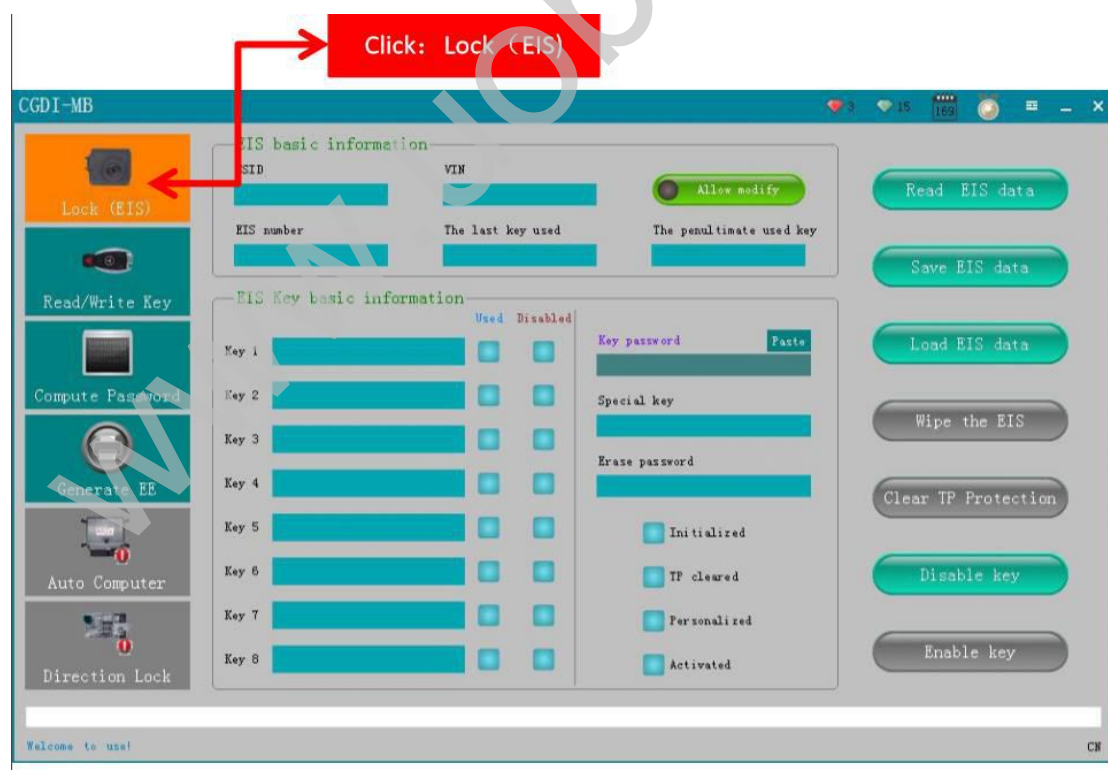


## User Manual for CGDI Pro MB car key add

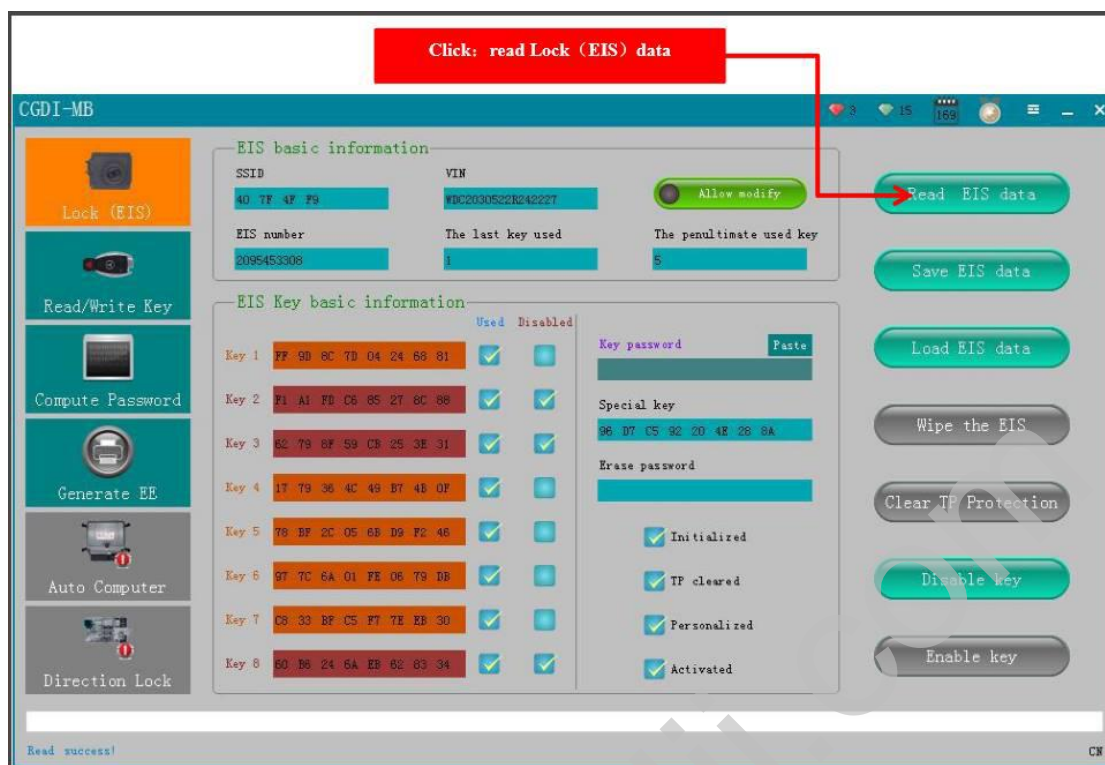
Topic: Step-by-step procedure on how to use **CGDI Pro MB** to add Mercedes Benz car key.



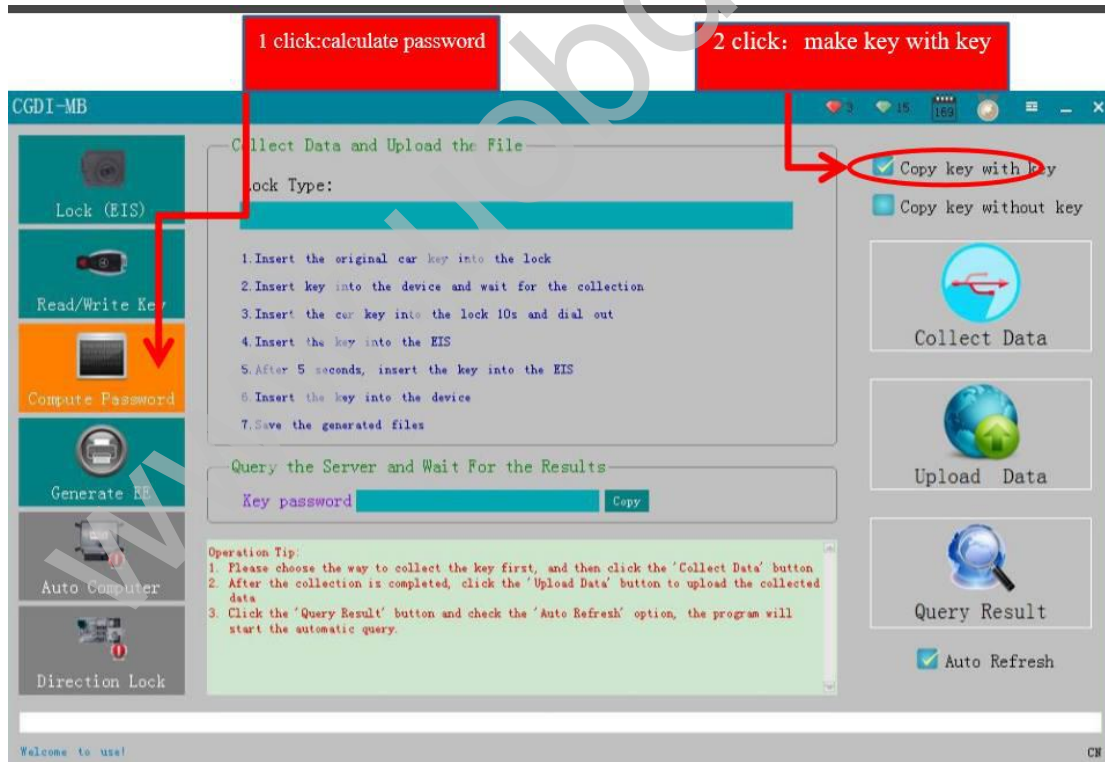
Step 1: Click on "Lock (EIS)"



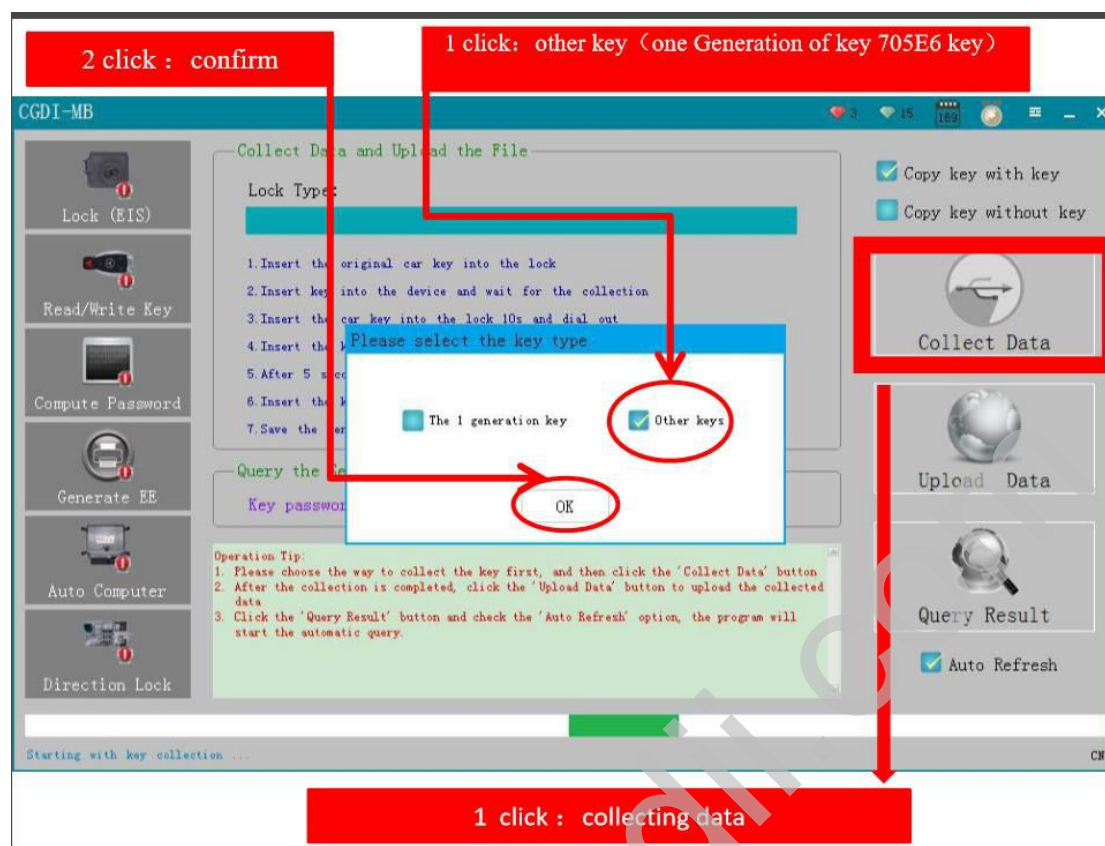
Step 2: Click on "Read EIS data"



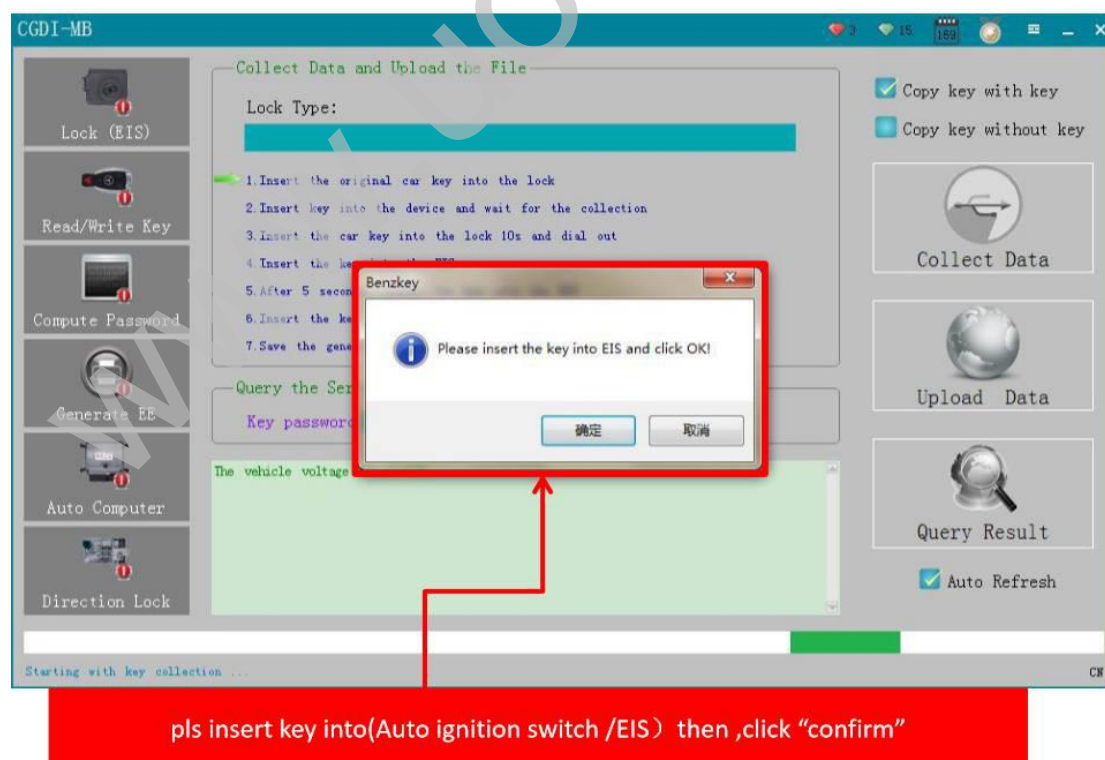
Step 3: Click on "Computer Password", then click on "Copy key with key"



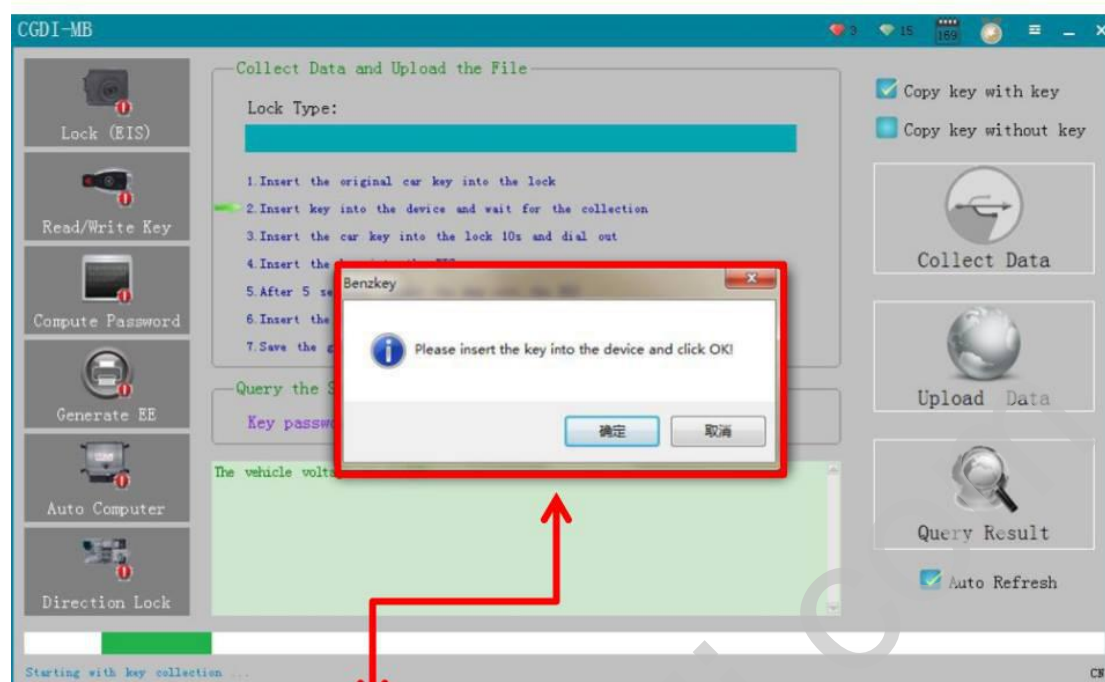
Step 4: Click on "Other Keys" (One generation of key 705E6 key), then click on "OK".



Step 5: Please insert the key into EIS and click OK.

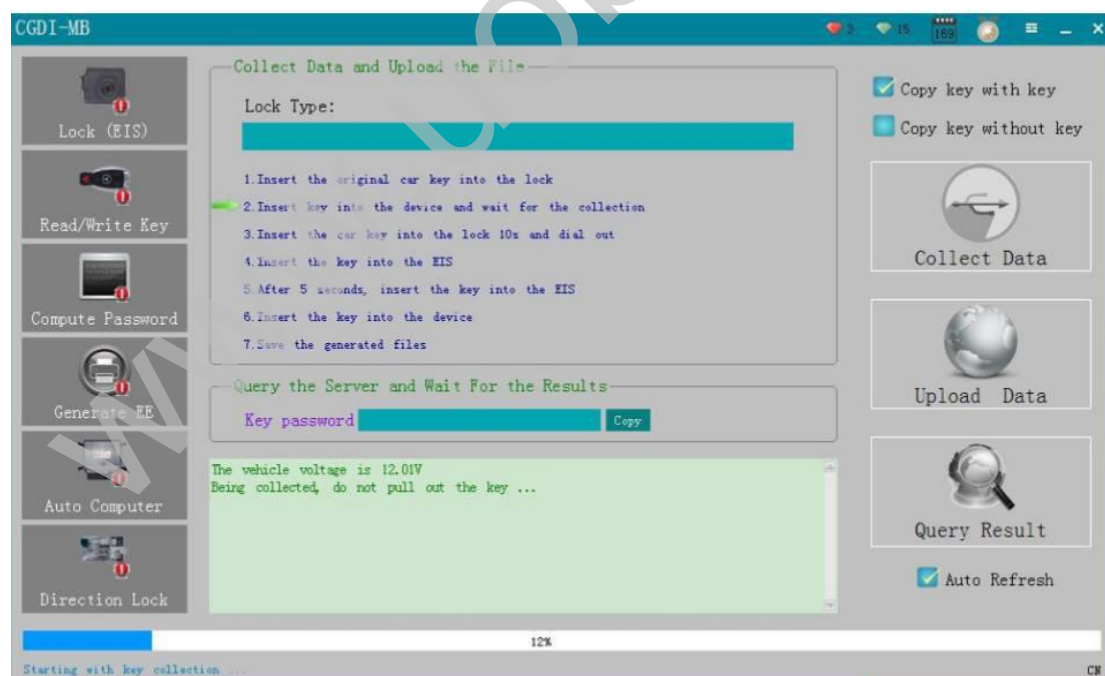


Step 6: Please insert the key into the device and click on OK!



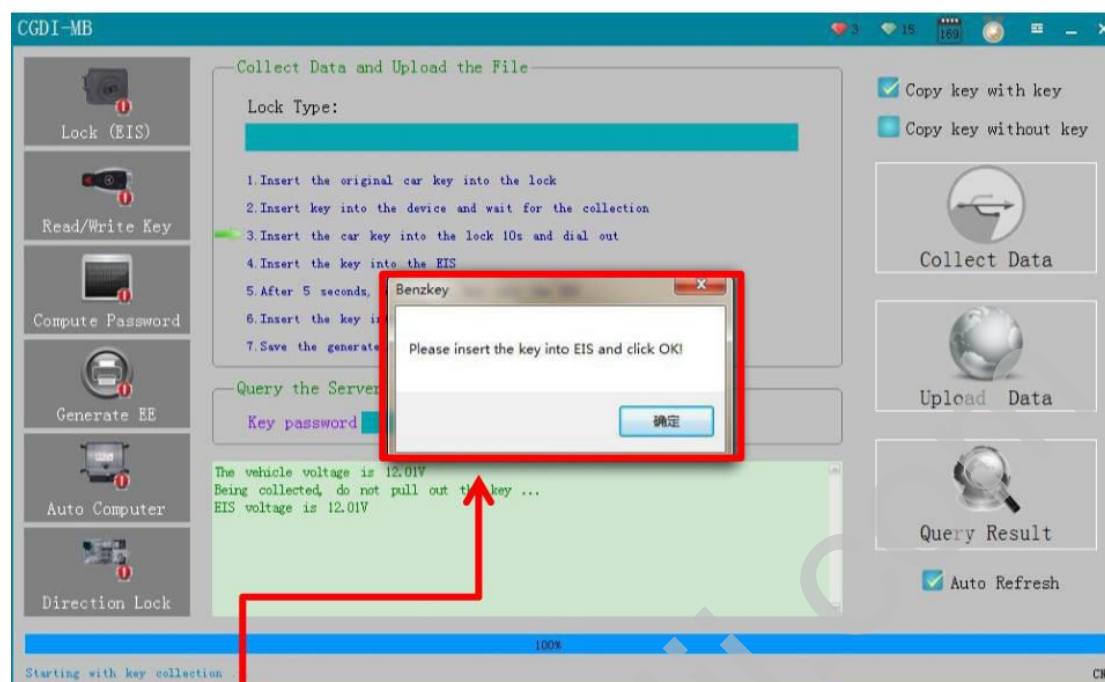
pls insert key into ( on the bez devices ) then click "confirm"

Step 7: Collecting the data, do not remove the key.



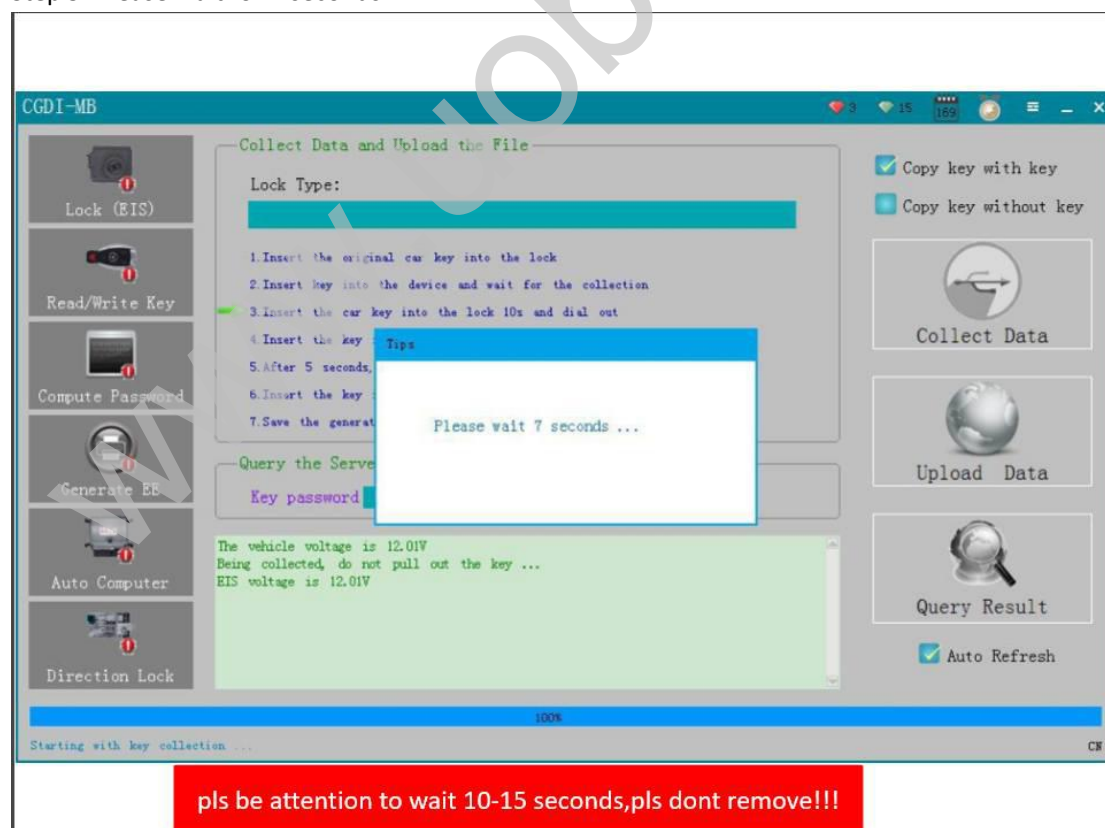
collecting data ,pls dont remove key !!!

Step 8: Please insert the key into EIS and click OK.



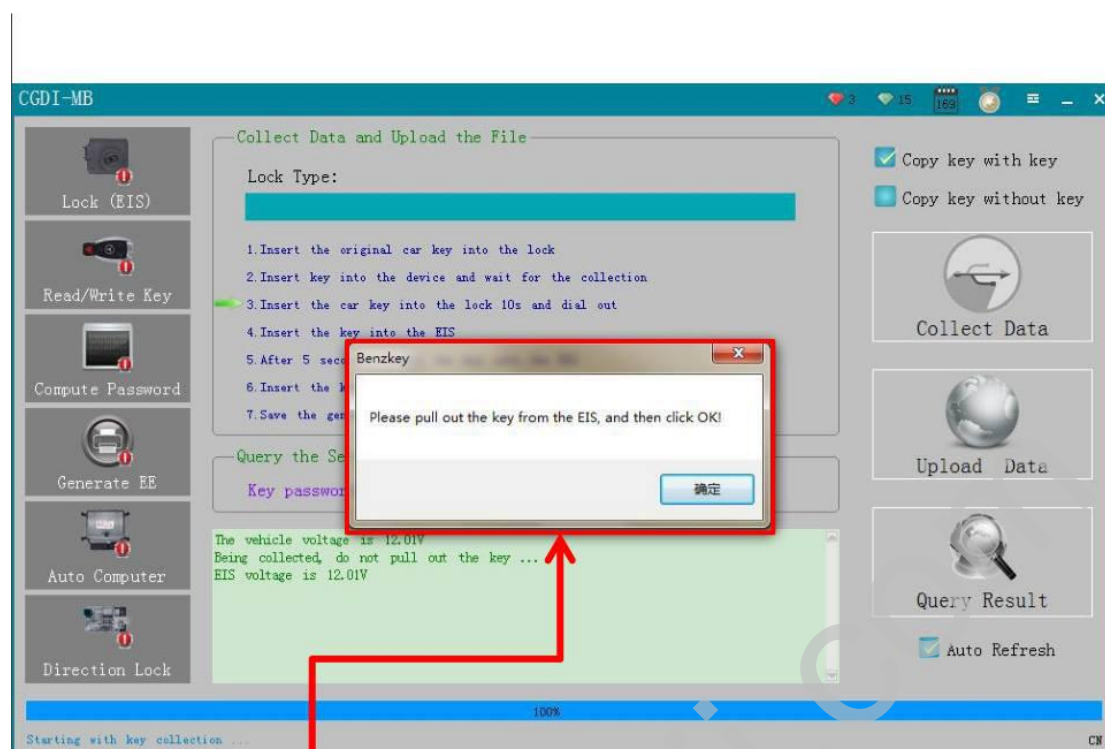
pls insert key into (Auto ignition switch /EIS) click "confirm"!!!

Step 9: Please wait for 7 seconds.



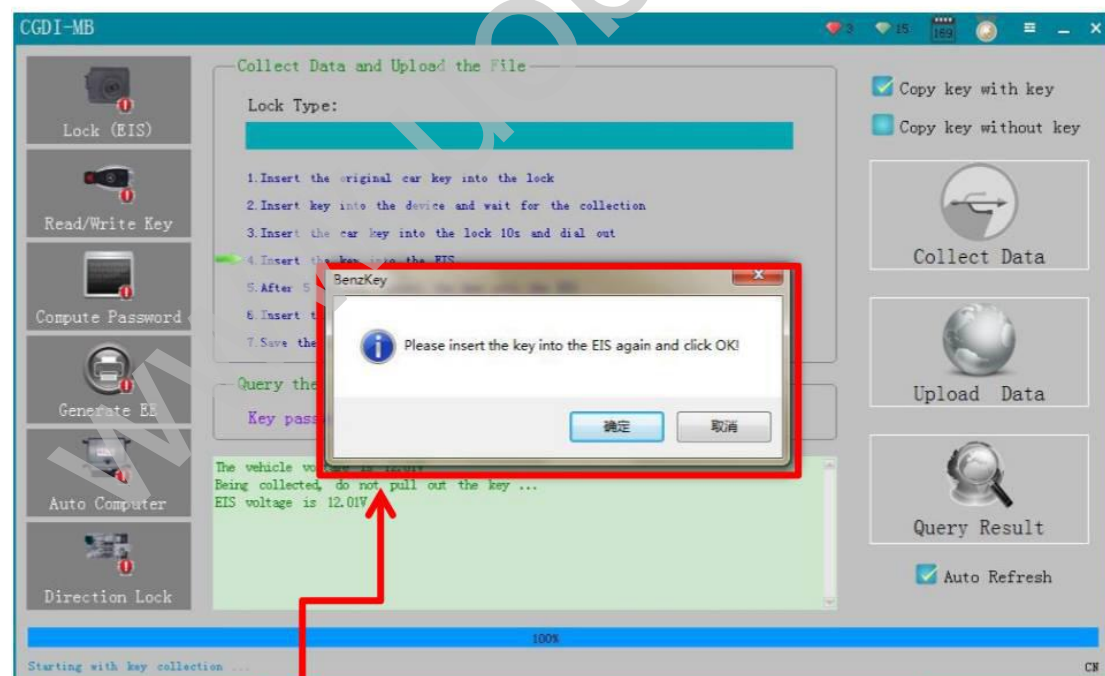
pls be attention to wait 10-15 seconds,pls dont remove!!!

Step 10: Please pull out the key from the EIS, and then click OK!



pls operate as picture showed !

Step 11: Please insert the key into the EIS again and click OK!



pls operate as picture showed ! (Auto ignition switch as showed EIS)

For more info about CGDI Benz Programmer: