

AUROTM

VW-A001

TUTORIAL

www.aurodiag.com

Trademarks

Auro™ and OtoSys™ are trademarks of Shenzhen HC Tech CO., Ltd., registered in China, the United States and other countries. All other marks are trademarks or registered trademarks of their respective holders.

Copyright Information

No part of this manual may be reproduced, stored in a retrieval system or transmitted, in any form or by any means, electronic, mechanical, photocopying, recording, or otherwise, without the prior written permission of Auro.

Disclaimer of Warranties and Limitation of Liabilities

All information, specifications and illustrations in this manual are based on the latest information available at the time of printing.

Auro reserves the right to make changes at any time without notice. While information of this manual has been carefully checked for accuracy, no guarantee is given for the completeness and correctness of the contents, including but not limited to the product specifications, functions, and illustrations.

Auro DOES NOT promote or encourage ANY illegal activities, all contents provided by Auro is meant for VEHICLE MAINTENANCE only.

Any action you take upon the information from this manual is strictly at your own risk, Auro will not be liable for any direct damages or for any special, incidental, or indirect damages or for any economic consequential damages (including lost profits).

For Services and Support



www.aurodiag.com



support@eurodiag.com

For technical assistance in all other markets, please contact your local selling agent.

Safety Information

For your own safety and the safety of others, and to prevent damage to the device and vehicles upon which it is used, it is important that the safety instructions presented throughout the product user manual be read and understood by all persons operating or coming into contact with the device.

There are various procedures, techniques, tools, and parts for servicing vehicles, as well as in the skill of the person doing the work. Because of the vast number of test applications and variations in the products that can be tested with this equipment, we cannot possibly anticipate or provide advice or safety messages to cover every circumstance. It is the automotive technician's responsibility to be knowledgeable of the system being tested. It is crucial to use proper service methods and test procedures. It is essential to perform tests in an appropriate and acceptable manner that does not endanger your safety, the safety of others in the work area, the device being used, or the vehicle being tested.

Before using the device, always refer to and follow the safety messages and applicable test procedures provided by the manufacturer of the vehicle or equipment being tested. Use the device only as described in this manual. Read, understand, and follow all safety messages and instructions in this manual.

Safety Messages

Safety messages are provided to help prevent personal injury and equipment damage. All safety messages are introduced by a signal word indicating the hazard level.

DANGER

Indicates an imminently hazardous situation which, if not avoided, will result in death or serious injury to the operator or to bystanders.

WARNING

Indicates a potentially hazardous situation which, if not avoided, could result in death or serious injury to the operator or to bystanders.

Safety Instructions

The safety messages herein cover situations Auro is aware of. Auro cannot know, evaluate or advise you as to all of the possible hazards. You must be certain that any condition or service procedure encountered does not jeopardize your personal safety.

DANGER

When an engine is operating, keep the service area WELL VENTILATED or attach a building exhaust removal system to the engine exhaust system. Engines produce carbon monoxide, an odorless, poisonous gas that causes slower reaction time and can lead to serious personal injury or loss of life.

SAFETY WARNINGS

- Always perform automotive testing in a safe environment.
- Wear safety eye protection that meets ANSI standards.
- Keep clothing, hair, hands, tools, test equipment, etc. away from all moving or hot engine parts.
- Operate the vehicle in a well ventilated work area, for exhaust gases are poisonous.
- Put the transmission in PARK (for automatic transmission) or NEUTRAL (for manual transmission) and make sure the parking brake is engaged.
- Put blocks in front of the drive wheels and never leave the vehicle unattended while testing.
- Be extra cautious when working around the ignition coil, distributor cap, ignition wires and spark plugs. These components create hazardous voltages when the engine is running.
- Keep a fire extinguisher suitable for gasoline, chemical, and electrical fires nearby.
- Do not connect or disconnect any test equipment while the ignition is on or the engine is running.
- Keep the test equipment dry, clean, free from oil, water or grease. Use a mild detergent on a clean cloth to clean the outside of the equipment as necessary.
- Do not drive the vehicle and operate the test equipment at the same time. Any distraction may cause an accident.
- Refer to the service manual for the vehicle being serviced and adhere to all diagnostic procedures and precautions. Failure to do so may result in personal injury or damage to the test equipment.
- To avoid damaging the test equipment or generating false data, make sure the vehicle battery is fully charged and the connection to the vehicle DLC is clean and secure.
- Do not place the test equipment on the distributor of the vehicle. Strong electro-magnetic interference can damage the equipment.

CONTENTS

TRADEMARKS	i
COPYRIGHT INFORMATION	i
DISCLAIMER OF WARRANTIES AND LIMITATION OF LIABILITIES.....	i
FOR SERVICES AND SUPPORT	i
SAFETY INFORMATION	ii
SAFETY MESSAGES	ii
SAFETY INSTRUCTIONS.....	ii
INTRODUCTION	1
KEY LEARNING VIA SMART MODE	1
KEY LEARNING VIA EXPERT MODE.....	11

Introduction

This manual introduces how to conduct VW Key Learning on Auro OtoSys IM100.

Two options are available when accessing the IMMO function:

- Smart Mode – accesses to a function menu where each function is configured as a smart guide system.
- Expert Mode – accesses to a function menu where each function is separated from each other.

➤ **Procedures before getting started:**

1. Connect the IM100 tablet to the vehicle's DLC via the included main cable for both communication and power source.
2. Connect the IM100 tablet to the programmer UP200 via the included USB cable.
3. Make sure the user has access to WiFi service.
4. Insert an original key into the ignition switch and then turn on the ignition.

 **NOTE**

Illustrations used in this manual are samples, and the actual testing screens may vary by vehicle. Observe the menu titles and on-screen instructions to make correct selections and operations.

Key Learning via Smart Mode

1. Turn on the IM100 tablet and connect to WiFi.
2. Tap **OtoSys > IMMO**. A vehicle menu displays and a disclaimer prompts up. Tap **Accept** to continue.



Figure 1 Sample Main Interface

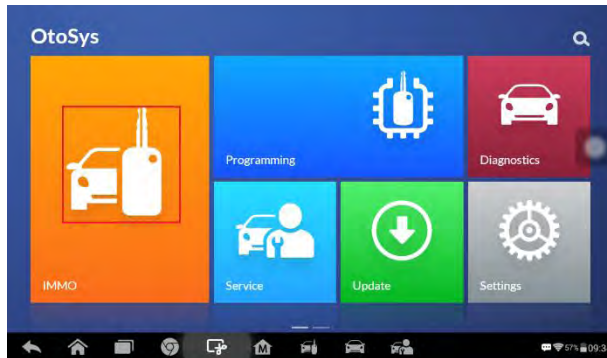


Figure 2 Sample OtoSys Job Menu

3. Tap **VW** on the vehicle menu.



Figure 3 Sample Vehicle Menu

4. Tap **Smart Mode** on the mode menu and then the IM100 tablet automatically identifies the vehicle information. Tap **Yes** to continue.

NOTE

You can click the pen icon near the top-right corner to record the operation data. If you encounter any difficulties, click the icon again to send us the data and the problem, so that our engineers could help.

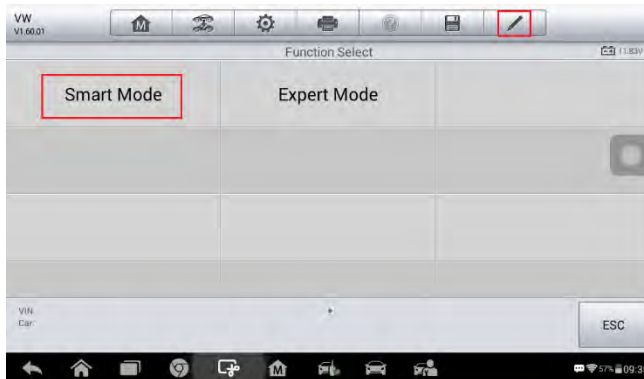


Figure 4 Sample Mode Menu

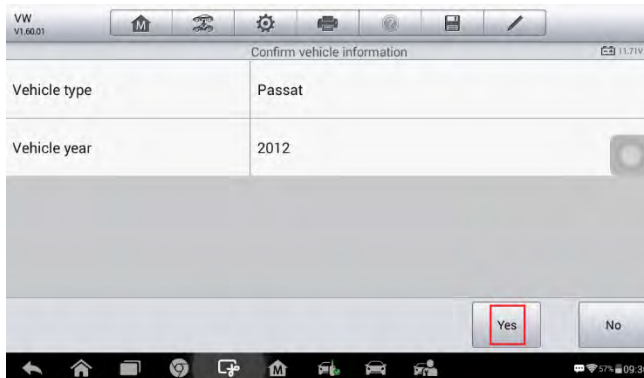


Figure 5 Sample Vehicle Information Screen

5. Read the information of Key Learning and other functions as you may need. Tap **OK** to continue.

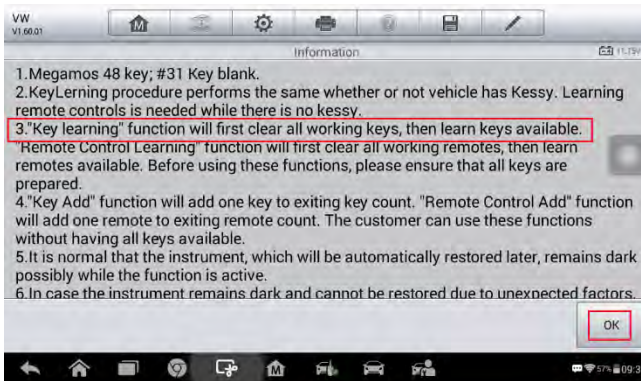


Figure 6 Sample Function Information Screen

6. Check the key status and tap **OK** to continue.

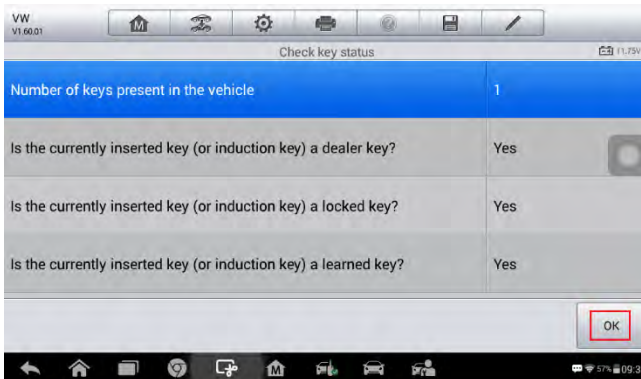


Figure 7 Sample Check Key Status Screen

7. Tap **Key Learning** on the function menu.

NOTE

In case of the data loss during Key Learning, you may tap **Backup vehicle data** on the function menu to save the vehicle data before performing Key Learning.

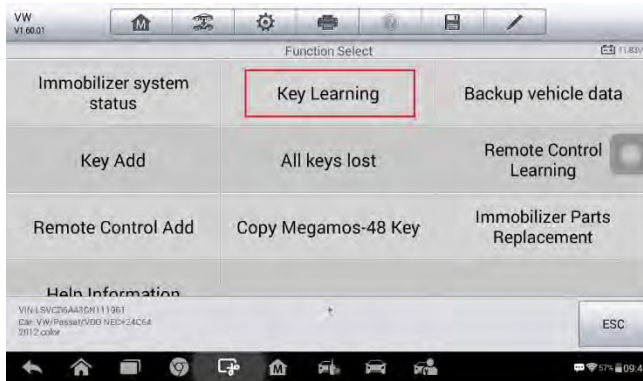


Figure 8 Sample Function Menu

- Then the IM100 tablet starts to perform three steps to complete the operation, i.e., Read IMMO Data, Make Dealer Key and Learn Key.

NOTE

During the process of Read IMMO Data, the vehicle instrument will go blank for a while and will light up soon.

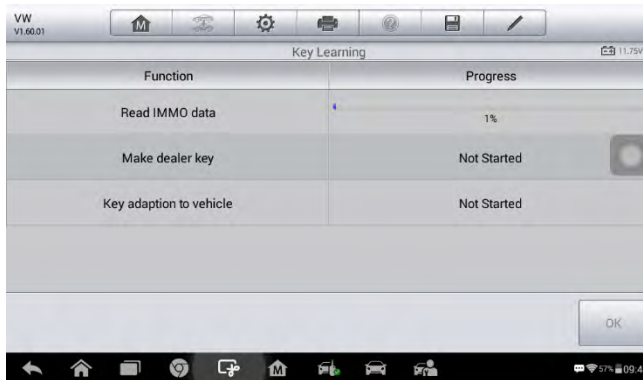


Figure 9 Sample Key Learning Screen 1



Figure 10 Sample Key Learning Screen 2

9. When Make Dealer Key starts, a “Do you need to make a dealer key?” message prompts up. Tap **Yes** to continue.

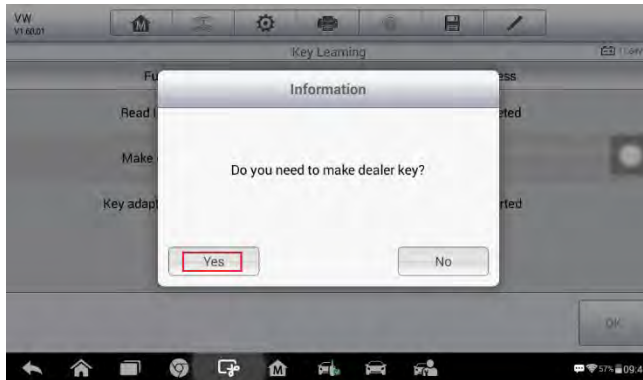


Figure 11 Sample Key Learning Screen 3

10. Follow the onscreen instruction to put a Blank Key into the key slot of the UP200. Then tap **OK** to continue.

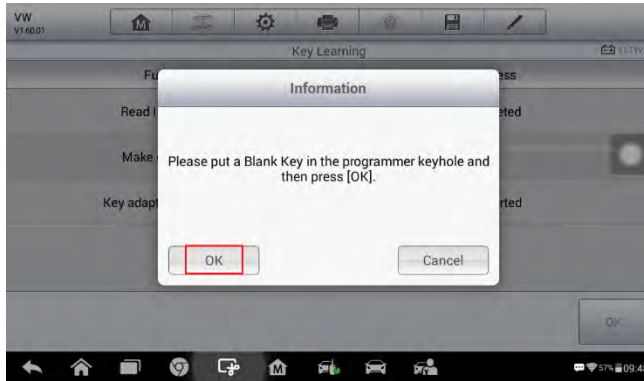


Figure 12 Sample Key Learning Screen 4

11. A “Make dealer key success!” message prompts up when the process is completed. Tap **Yes** to repeat step 10 and make the next dealer key with a new key; tap **No** to move to the next step, Learn Key.

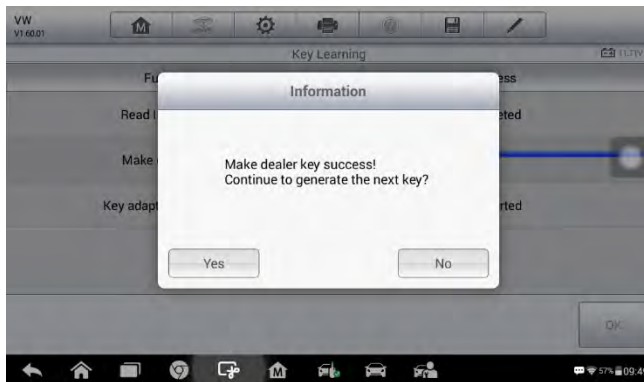


Figure 13 Sample Key Learning Screen 5

12. When Learn Key starts, a “Does vehicle have Kessy?” message prompts up. Make selection accordingly.

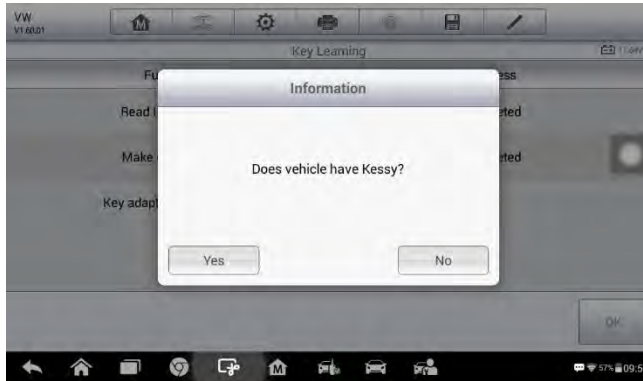


Figure 14 Sample Key Learning Screen 6

13. Input the number of keys to be learned and tap **OK** to continue.

NOTE

The number of keys that need to be learned is the sum of the dealer key(s) and original key(s).

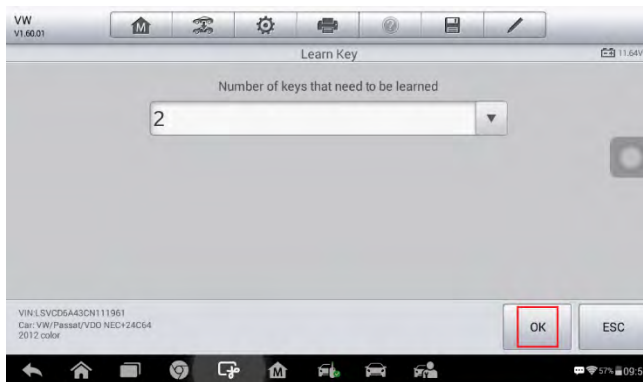


Figure 15 Sample Key Learning Screen 7

14. Follow the onscreen instruction to insert the keys to be learned into the vehicle ignition switch.

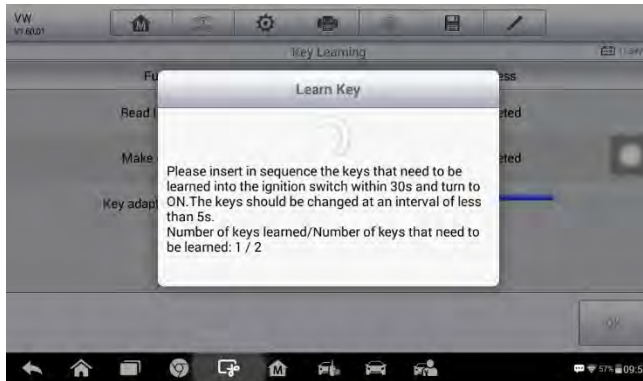


Figure 16 Sample Key Learning Screen 8

15. When a “Key learning completed!” message prompts up, tap **OK** to continue.

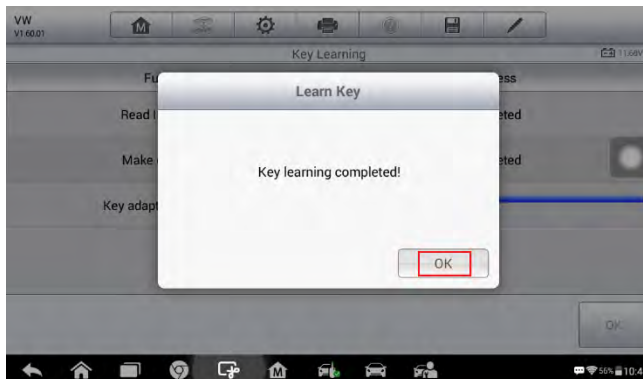


Figure 17 Sample Key Learning Screen 9

16. Follow the onscreen instruction to turn the ignition off and then back to ON. Then tap **OK** to continue.

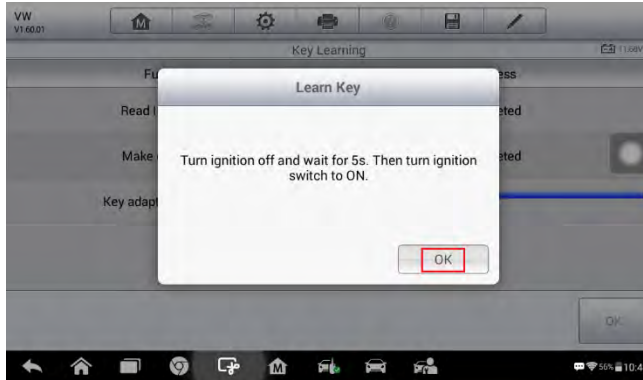


Figure 18 Sample Key Learning Screen 10

17. When Key Learning is completed, tap **OK** to check the key status. Then tap **OK** to exit.

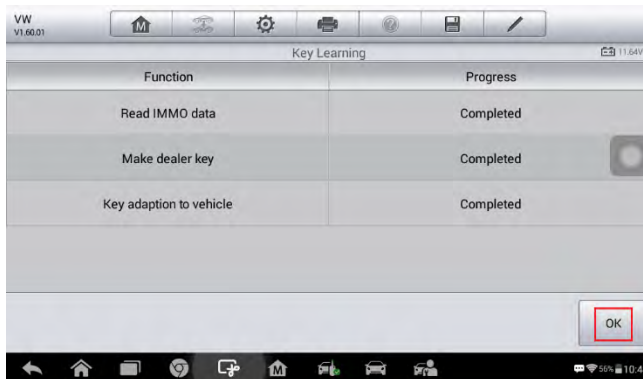


Figure 19 Sample Key Learning Screen 11

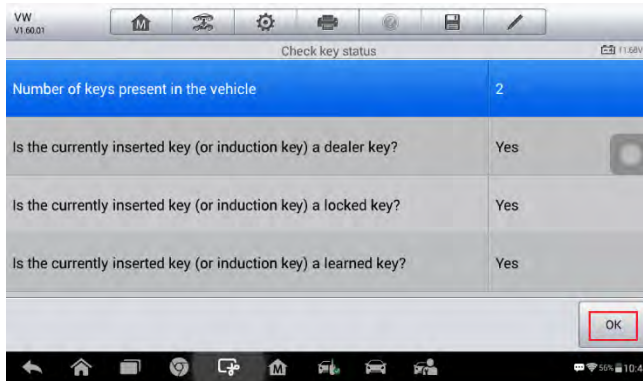


Figure 20 Sample Key Learning Screen 12

Key Learning via Expert Mode

1. Turn on the IM100 tablet and connect to WiFi.
2. Tap **OtoSys** > **IMMO**. A vehicle menu displays and a disclaimer prompts up. Tap **Accept** to continue.



Figure 21 Sample Main Interface

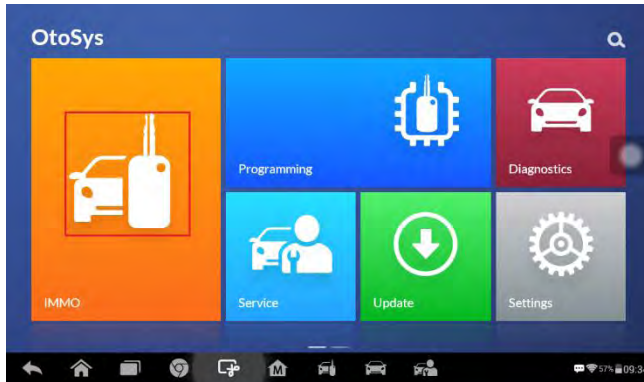


Figure 22 Sample OtoSys Job Menu

3. Tap **VW** on the vehicle menu.

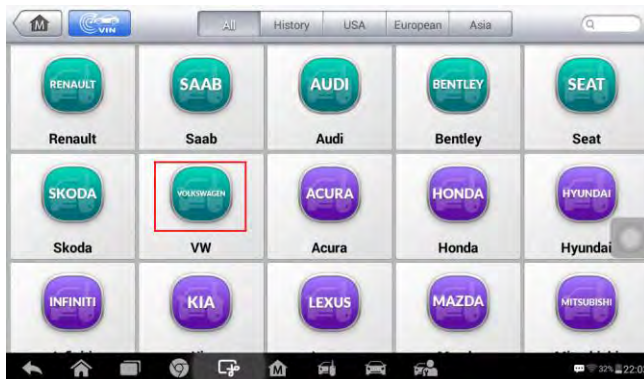


Figure 23 Sample Vehicle Menu

4. Tap **Expert Mode** on the mode menu.

NOTE

You can click the pen icon near the top-right corner to record the operation data. If you encounter any difficulties, click the icon again to send us the data and the problem, so that our engineers could help.

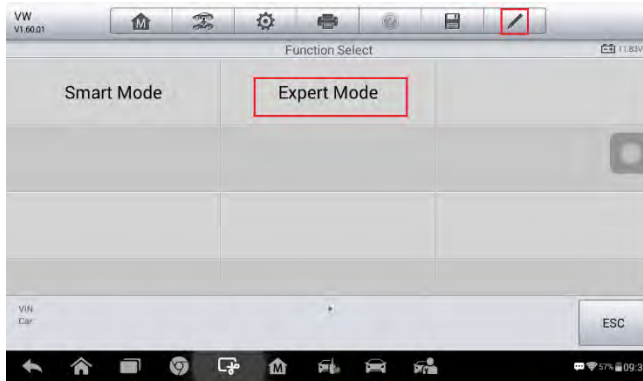


Figure 24 Sample Mode Menu

5. Make selections to step by step locate the IMMO type and display the function menu.

NOTE

You can tap **Auto Detect** to automatically identify the instrument type.

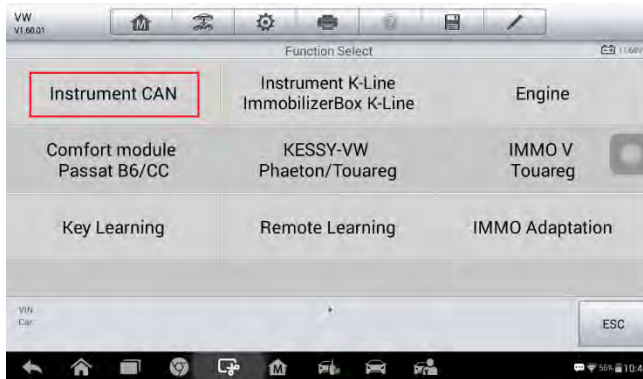


Figure 25 Sample Function Select Screen

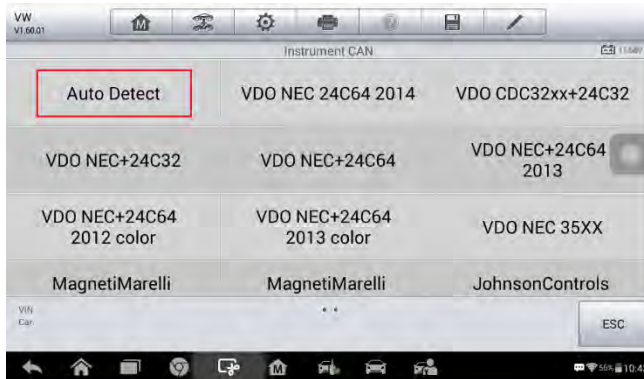


Figure 26 Sample Instrument Select Screen

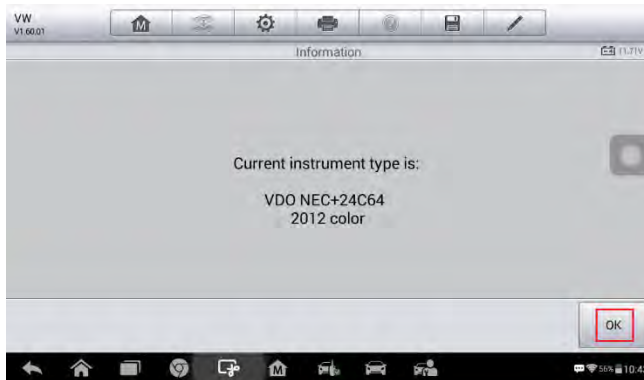


Figure 27 Sample Information Screen

- To complete Key Learning, three functions on the menu need to be performed, i.e., Read IMMO Data, Make Dealer Key and Learn Key.

NOTE

In case of the data loss during Key Learning, you may tap **Backup EEPROM data** and **Backup IMMO data** to save the vehicle data before performing Key Learning.

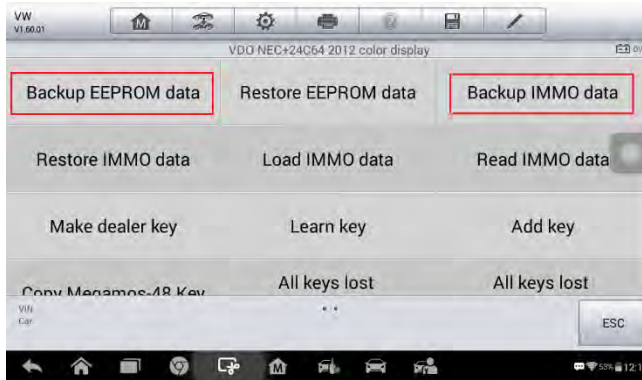


Figure 28 Sample Function Menu

7. Tap **Read IMMO data** on the function menu.

NOTE

During the process of Read IMMO Data, the vehicle instrument will go blank for a while and will light up soon.

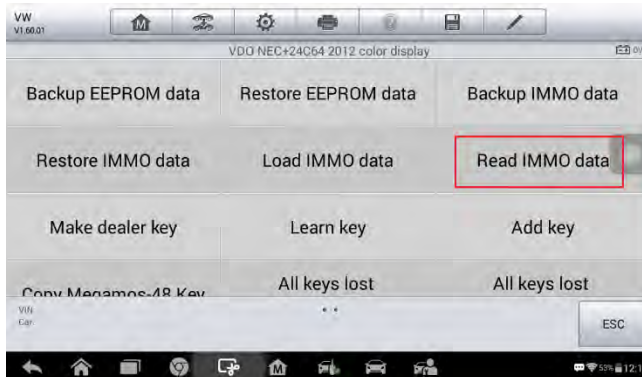


Figure 29 Sample Read IMMO Data Screen 1

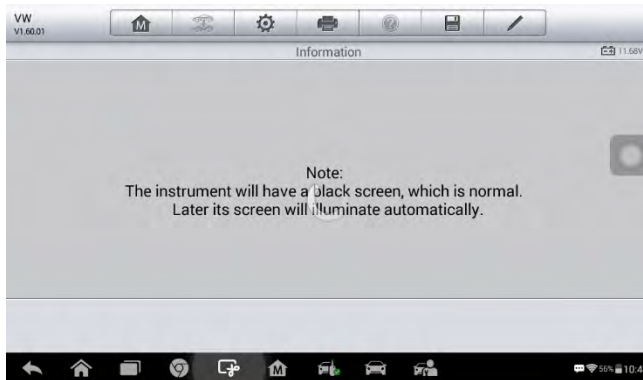


Figure 30 Sample Read IMMO Data Screen 2

8. Read the vehicle anti-theft information and tap **OK** to exit.

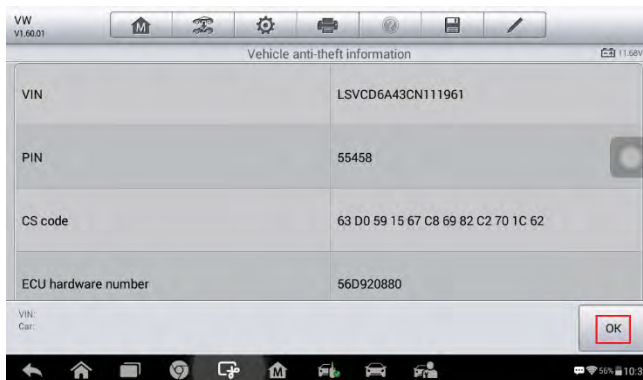


Figure 31 Sample Read IMMO Data Screen 3

9. Tap **Make dealer key** on the function menu.

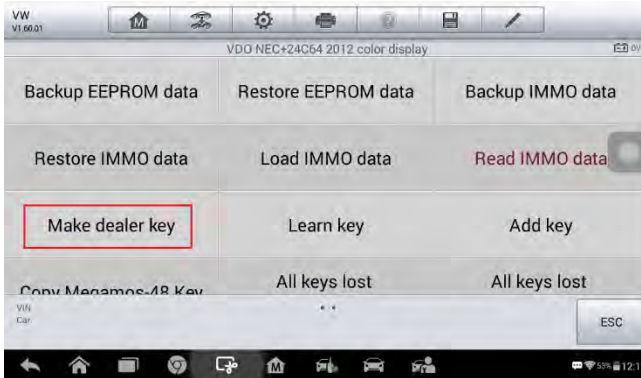


Figure 32 Sample Make Dealer Key Screen 1

10. Follow the onscreen instruction to put a Blank Key into the key slot of the UP200 and tap **OK** to continue.

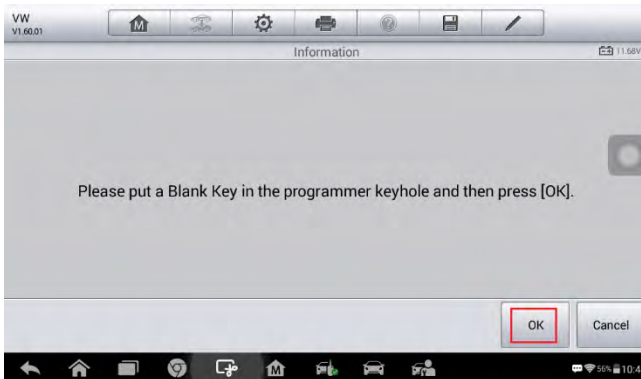


Figure 33 Sample Make Dealer Key Screen 2

11. When a “Make dealer key success!” message displays, tap **OK** to exit.

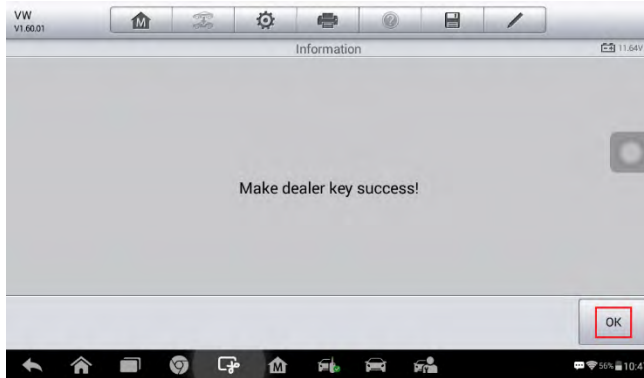


Figure 34 Sample Make Dealer Key Screen 3

12. Tap **Learn key** on the function menu.

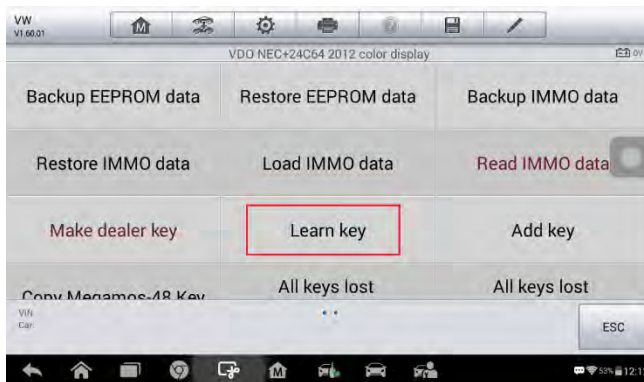


Figure 35 Sample Learn Key Screen 1

13. When a “Does vehicle have Kessy?” message displays, make selection accordingly.

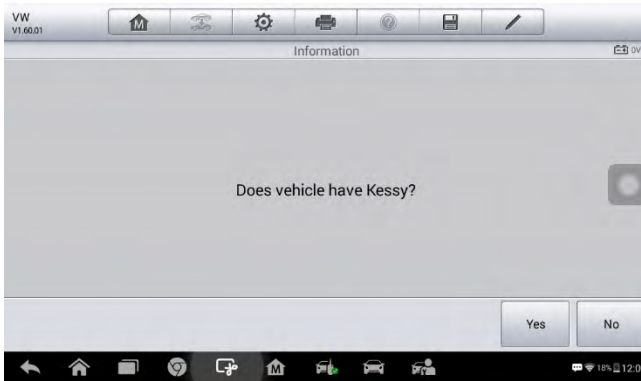


Figure 36 Sample Learn Key Screen 2

14. Input the number of keys that need to be learned.

NOTE

The number of keys that need to be learned is the sum of the dealer key(s) and original key(s).

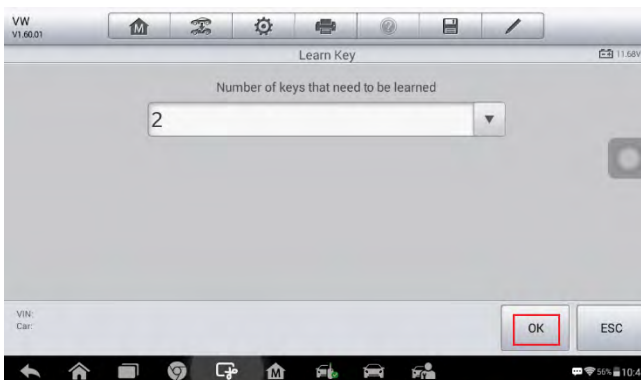


Figure 37 Sample Learn Key Screen 3

15. Follow the onscreen instruction to insert the keys to be learned into the vehicle ignition switch.

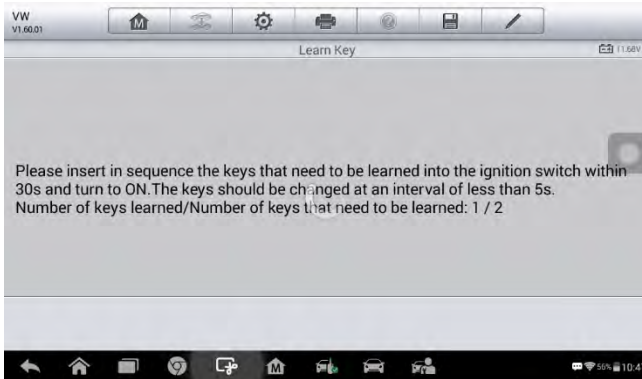


Figure 38 Sample Learn Key Screen 4

16. When a "Key Learning completed!" message displays, tap **OK** to continue.

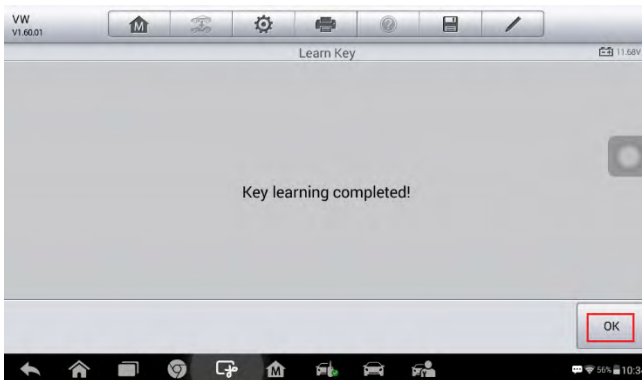


Figure 39 Sample Learn Key Screen 5

17. Follow the onscreen instruction to turn the ignition off and then back to ON. Tap **OK** to complete Key Learning and exit.

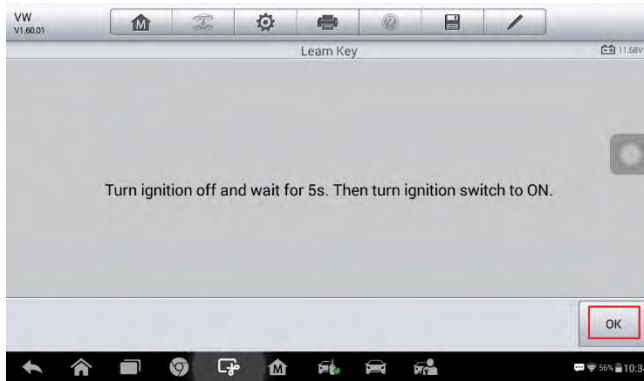


Figure 40 Sample Learn Key Screen 6

18. Tap **Check key status** on the function menu to check if all keys are learned. Tap **OK** to exit.

NOTE

If the key is not made into a dealer key, repeat step 9-17; if the key is not successfully learned, repeat step 12-17.

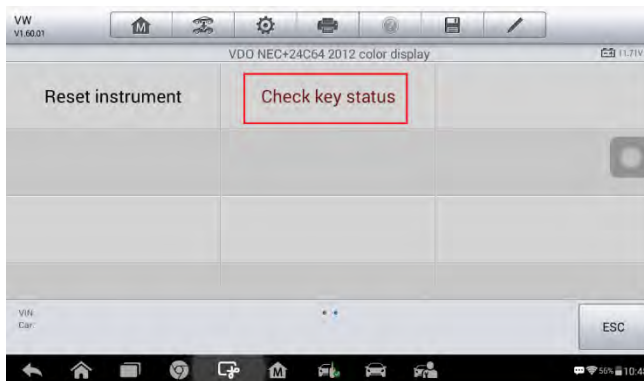


Figure 41 Sample Check Key Status Screen 1

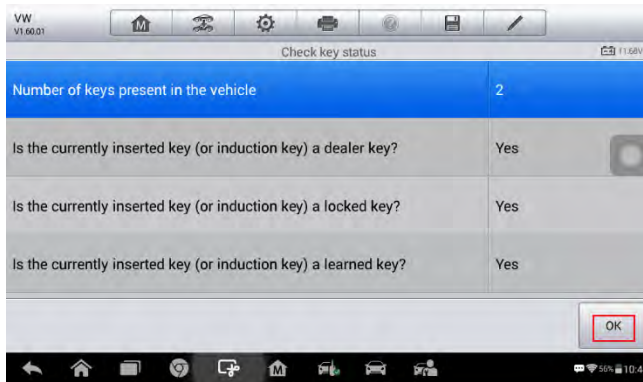


Figure 42 Sample Check Key Status Screen 2