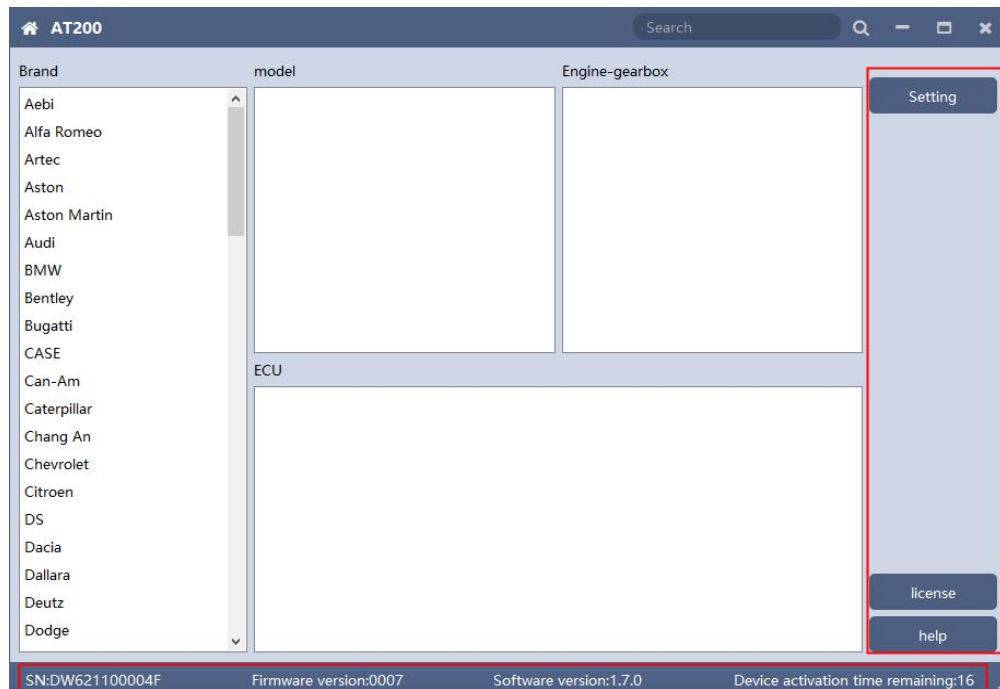

AT200 User Manual

Version No. : V2.0

一、 Software Use

Below the main interface is the software version and device information.



The functions on right side are are:

Ⓞ [Setting](#) Set the language, font size and display type.

Ⓞ [Authorization info](#) AT200 software requires authorization before use

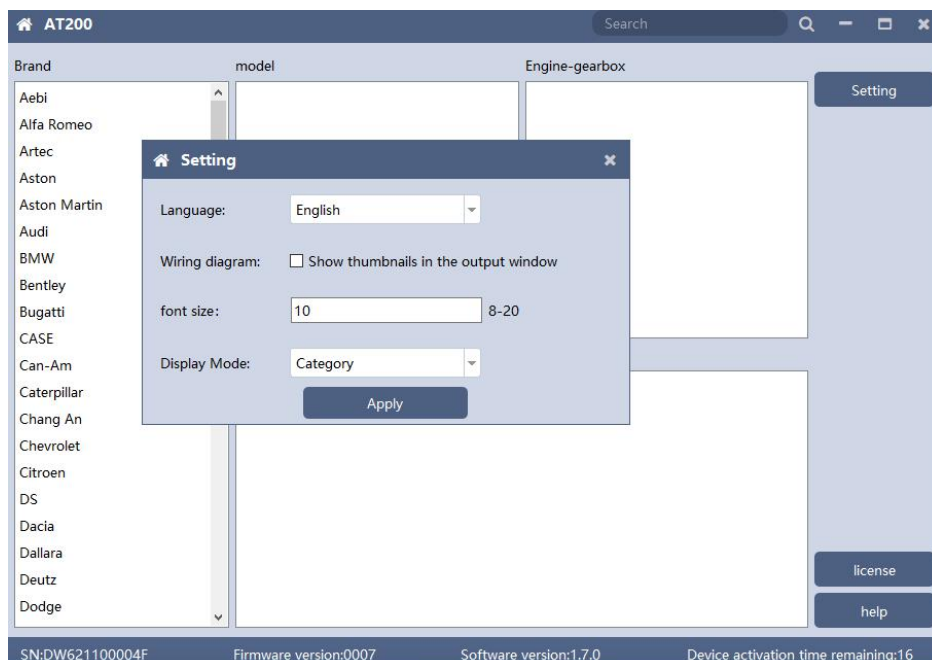
Ⓞ [Use help](#) Open use document

1、Setting

⦿Language Switch languages, currently supports Simplified Chinese, Traditional Chinese, English, French and Spanish

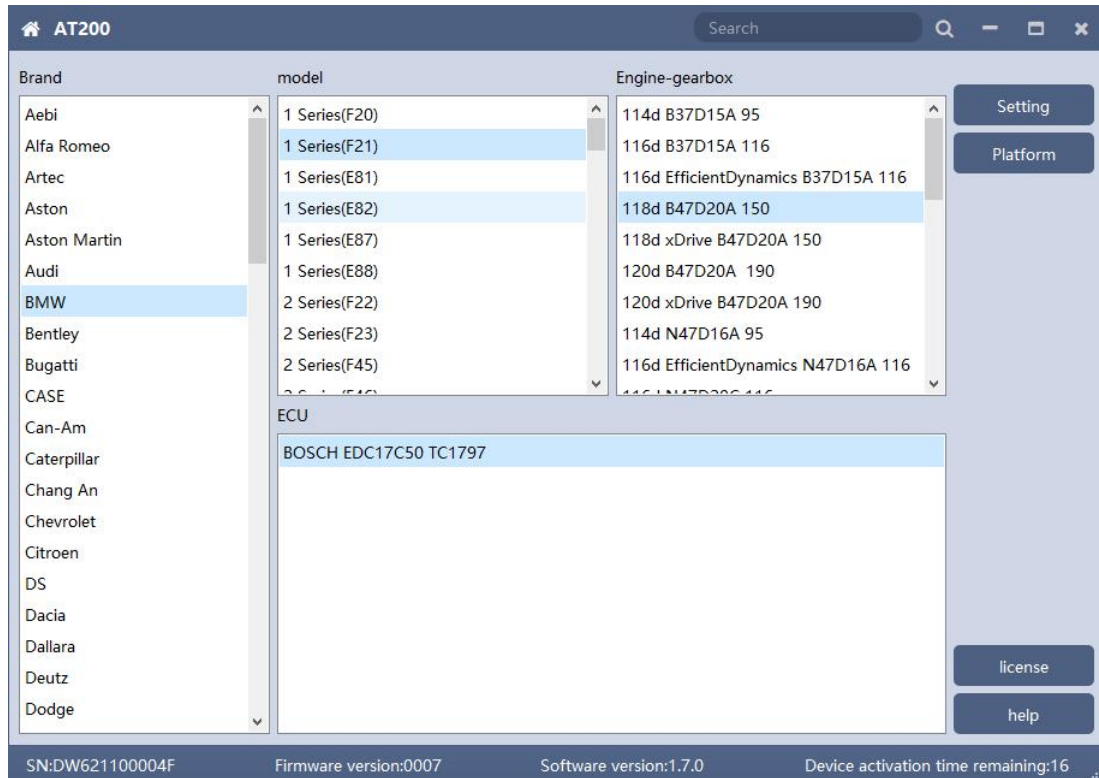
⦿Font size You can enter the font size yourself (the larger the number, the larger the font)
Range: 8-20

⦿Display Method Select category display and merge display

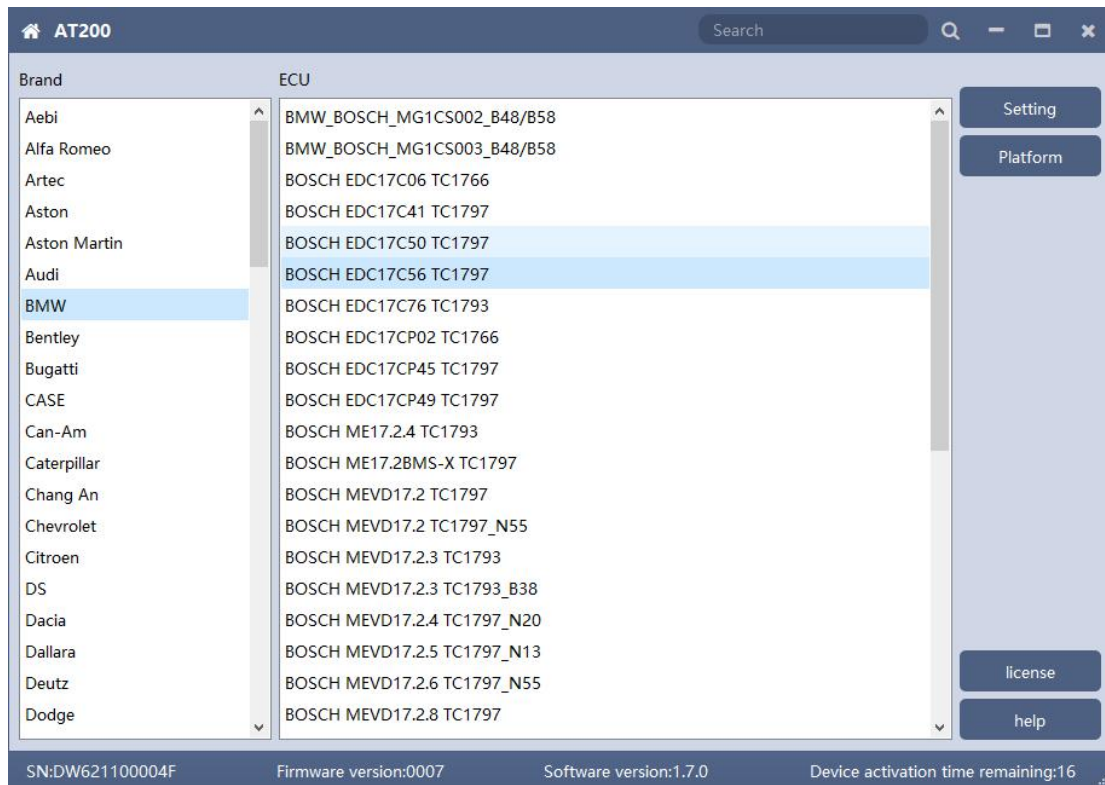


1.1 Display Method

① Select category display

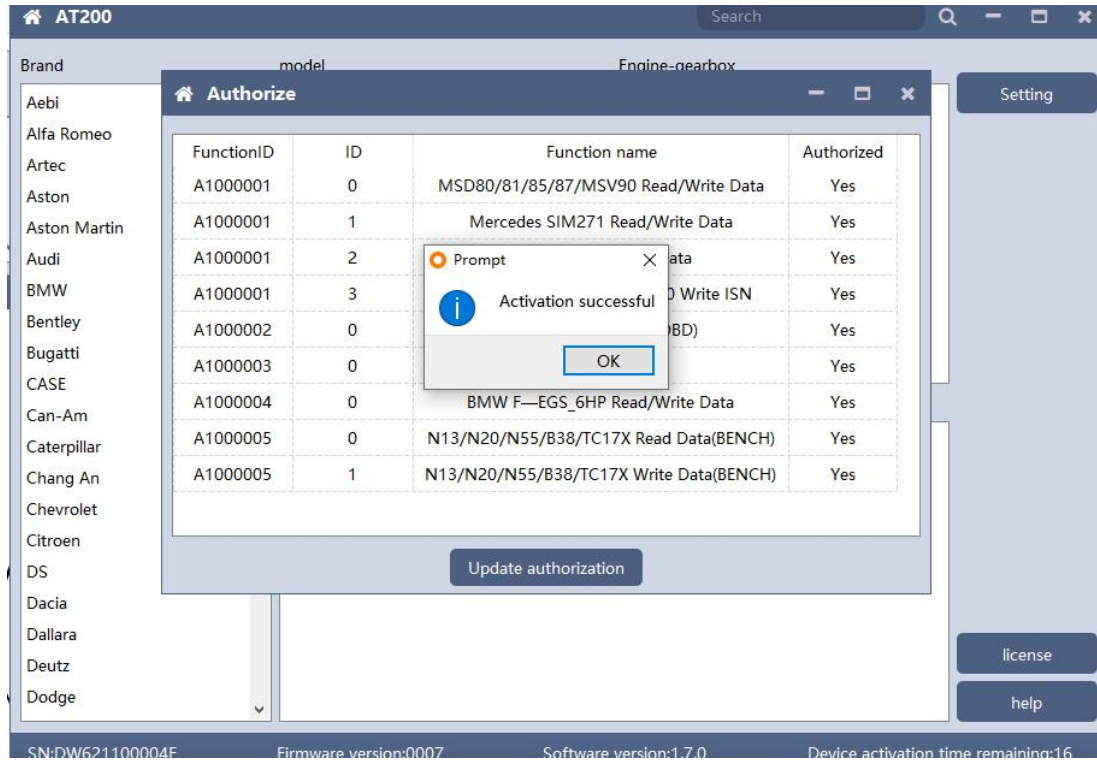


① Select category display



2、Devices Authorization

- ① AT200 software requires authorization before use
- ① Click Authorization Information on the main interface to view the authorization list
- ① Click the Update Authorization button

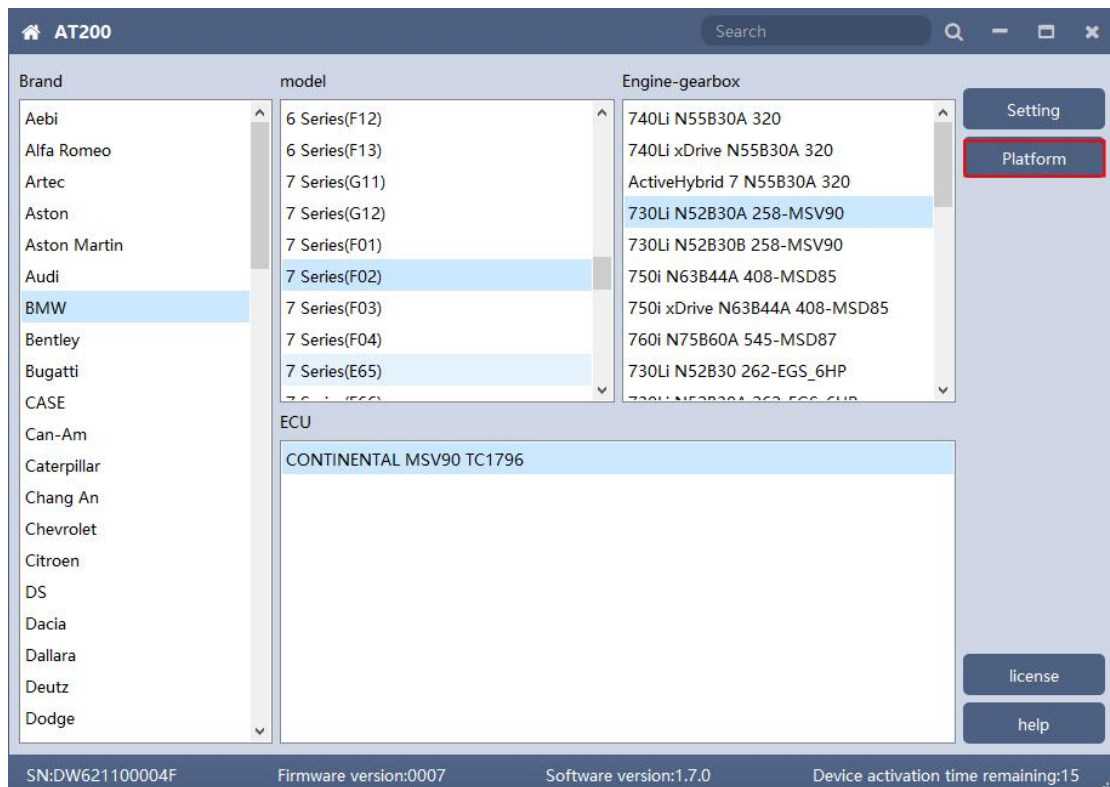


⦿ If "No" is still displayed after updating authorization, please contact the manufacturer

二、 MSV90/80/MSD87/85/ 81/80/SIM271

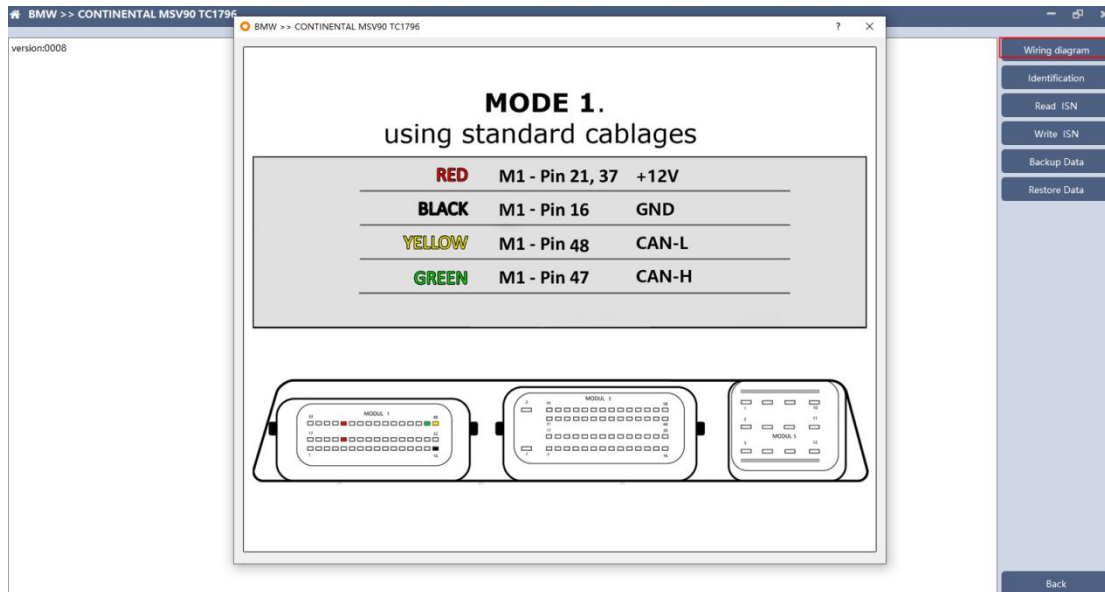
AT200 currently supports the cloning and ISN reading of BMW models MSV90 / 80 / MSD87 / 85/81/80 (E series, F series) and Mercedes-Benz SIM271 ECU.

1、 Determine the type of ECU according to the vehicle model, and select the correct model, otherwise the normal operation will not be performed.



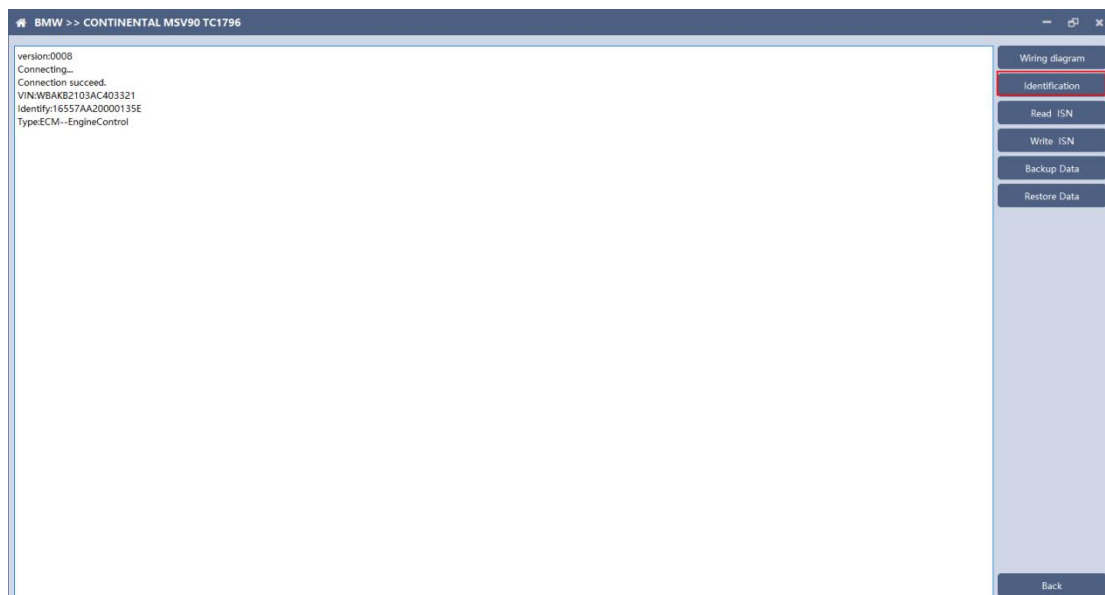
After selecting the correct ECU model, the "Platform" button will appear on the right. As shown in the figure above, click the "Platform" button to enter the ECU operation interface.

2、View wiring diagram



Click the "Wiring Diagram" button to view the ECU wiring diagram, connect the wiring harness correctly according to the wiring diagram, and connect with the device, plug in the device DC12V interface with 12V power supply.

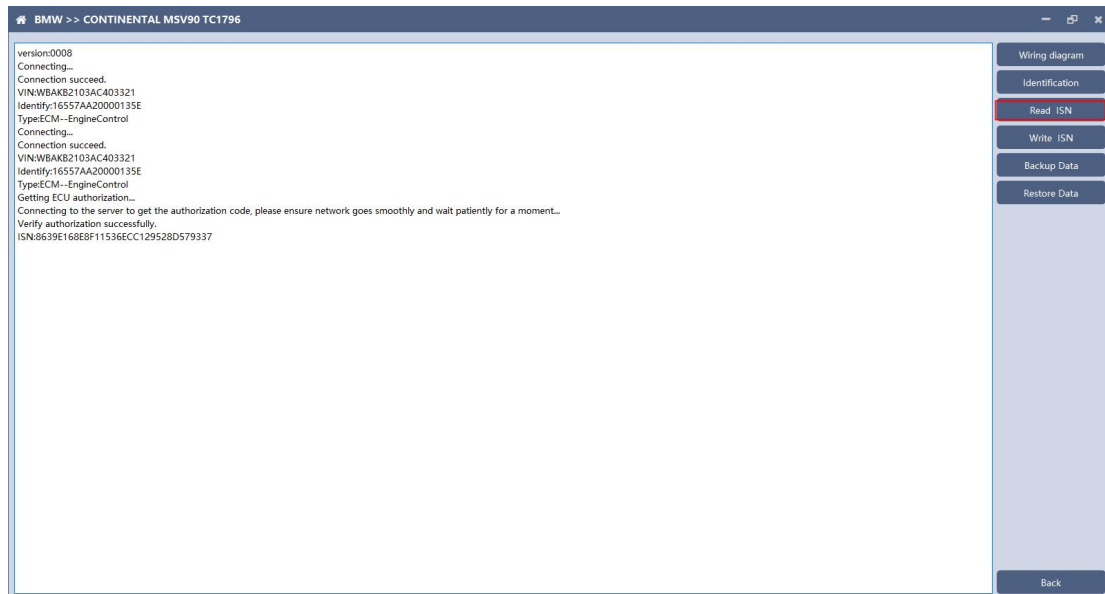
3、 Identifying the ECU



Click the "Identify" button to read the ECU related

information, as shown in the figure above.

4、Reading ISN

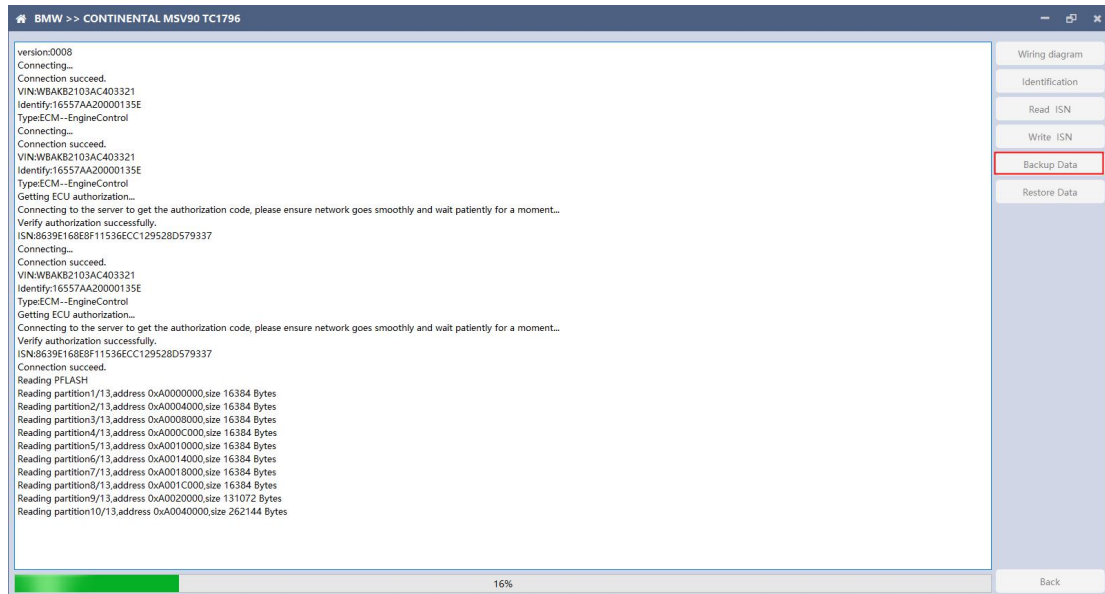


Click the "Read ISN" button to read the ISN.

Note: This operation needs to be connected to the network.

Please ensure that the network is normal during use.

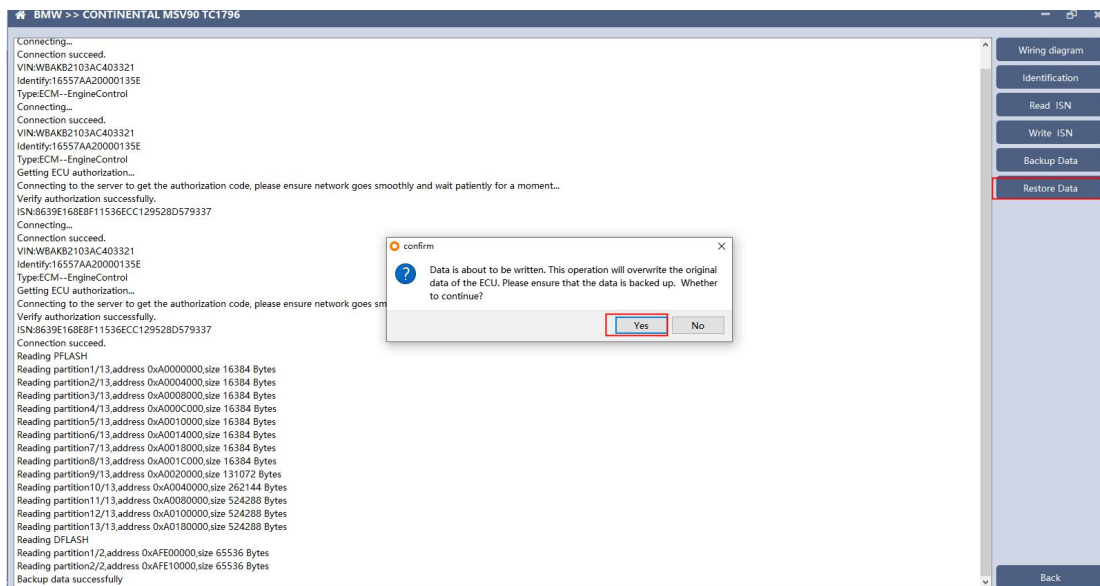
5、Backup Data



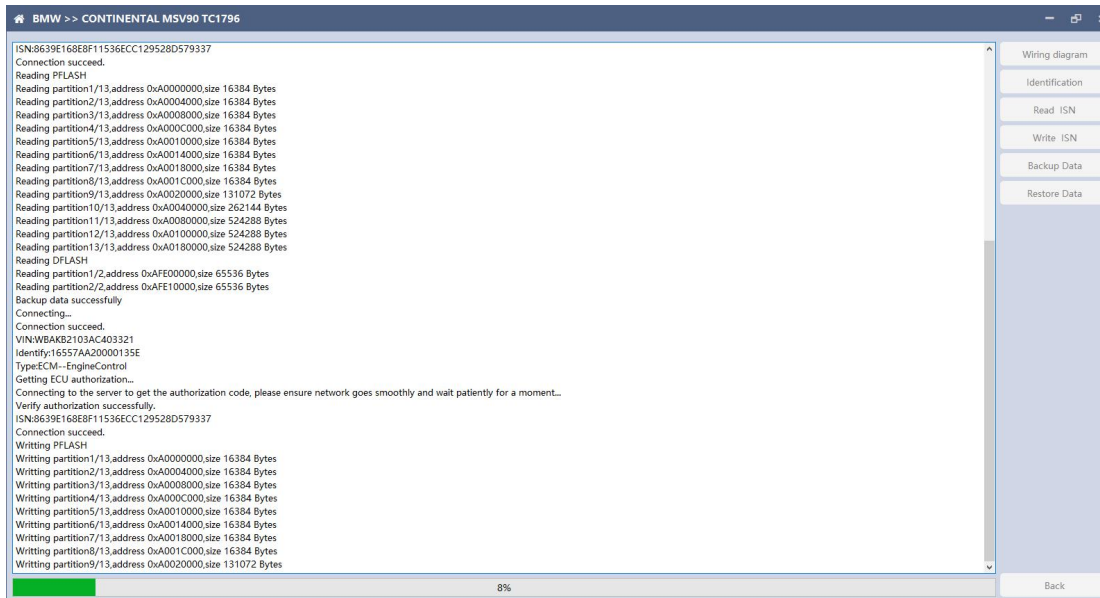
Click "Backup Data" to back up the ECU data. After reading, please save the data for subsequent use.

Note: This operation needs to be connected to the network. Please ensure that the network is normal during use.

6、Data Restore



Click "Restore Data" to write the ECU data. Before writing, please make sure the data is backed up. The restored data will overwrite the current ECU data. The data can be the data of the current ECU or other ECU of the same type.



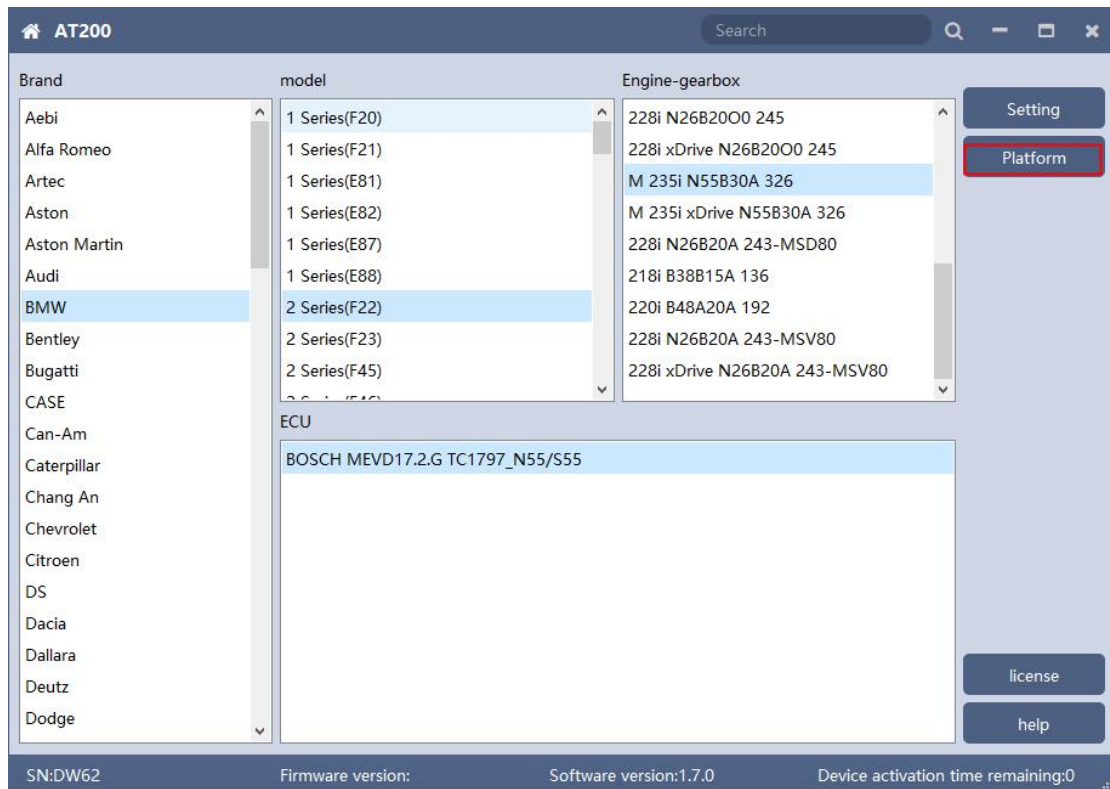
Note: During the process of data recovery, it is strictly forbidden to disconnect the device power or disconnect the device, otherwise it may cause damage to the ECU; if the

software is unexpectedly shut down or the computer is shut down or crashed unexpectedly during the process of data recovery, please do not disconnect the device power or device Connect for 15 minutes, and the device can complete data recovery independently.

三、 N13/N20/N55/B38/TC17X

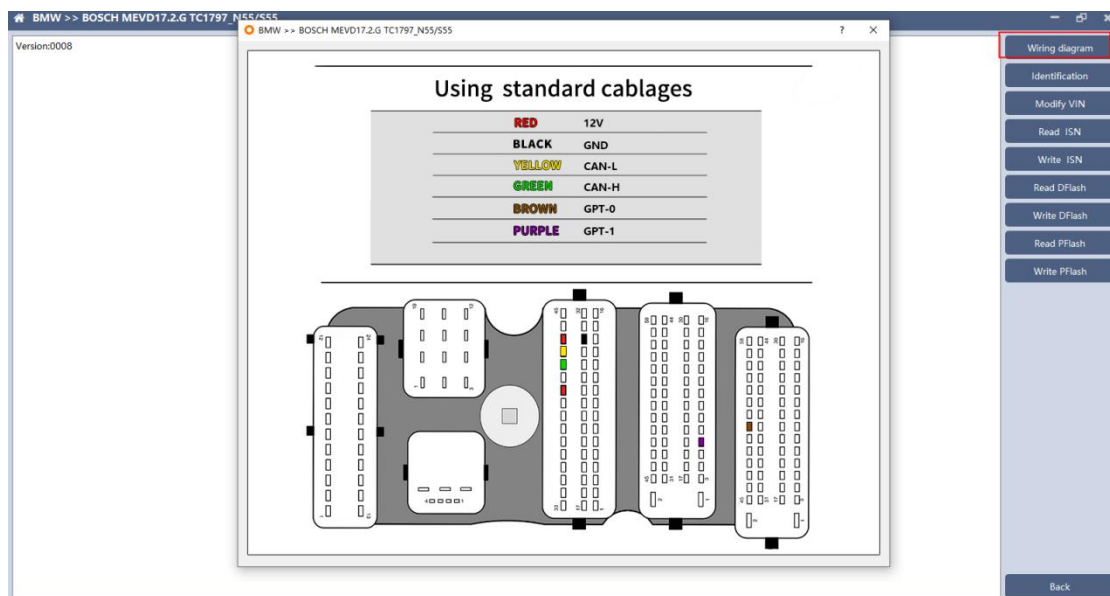
The AT200 currently supports ISN read / write, VIN modification, and data read / write functions for the N13 / N20 / N55 / B38 / TC17X F series chassis of BMW models.

1、 Determine the type of ECU according to the vehicle model, and select the correct model, otherwise it will not operate normally. The following is described with N55



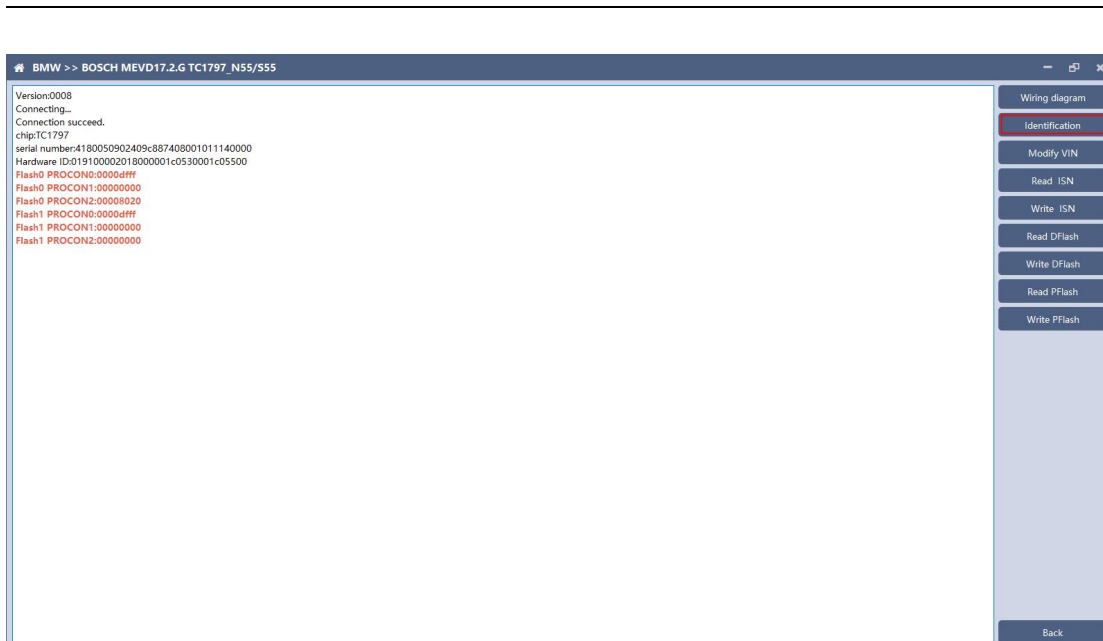
After selecting the correct ECU model, the "Platform" button will appear on the right. As shown in the figure above, click the "Platform" button to enter the ECU operation interface.

2、View wiring diagram



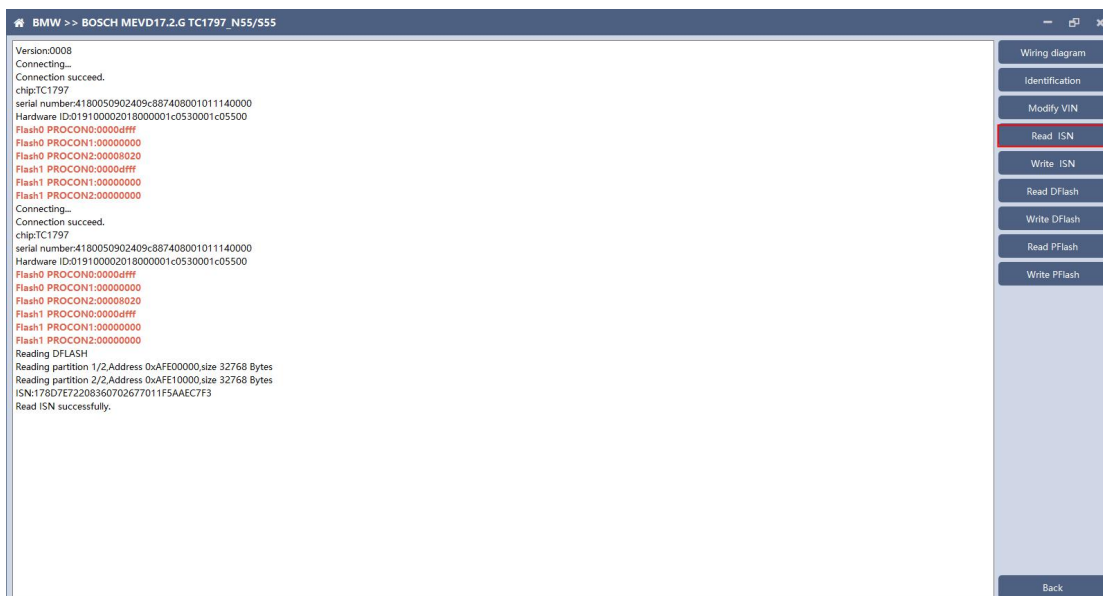
Click the "Wiring Diagram" button to view the ECU wiring diagram, connect the wiring harness correctly according to the wiring diagram, and connect with the device, plug in the device DC12V interface with 12V power supply.

3、Identifying the ECU



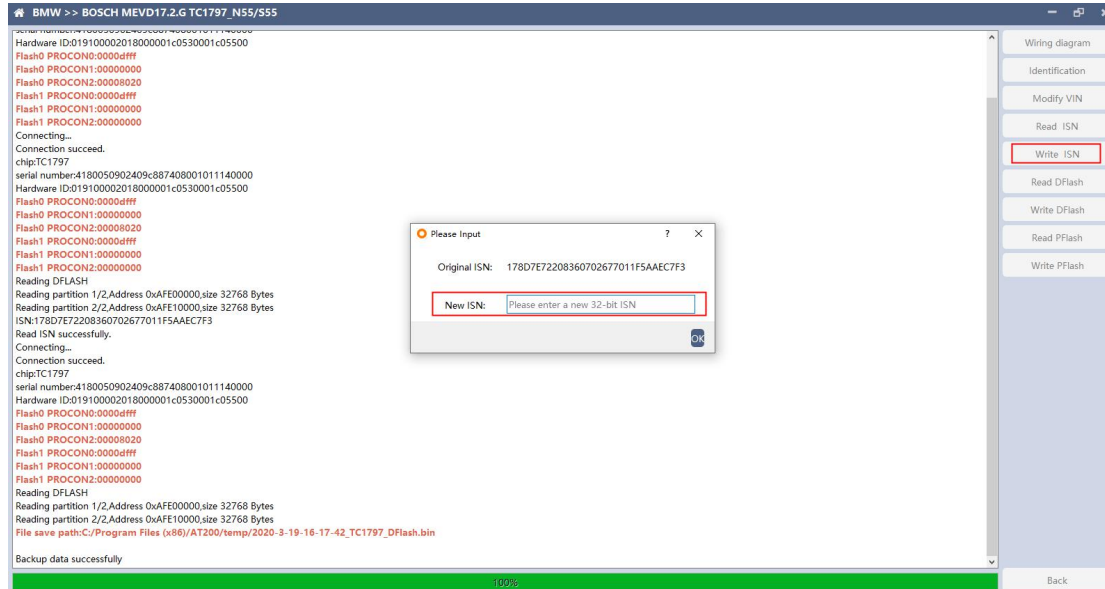
Click the "Identification" button to read the ECU related information, as shown in the figure above.

4、Reading ISN

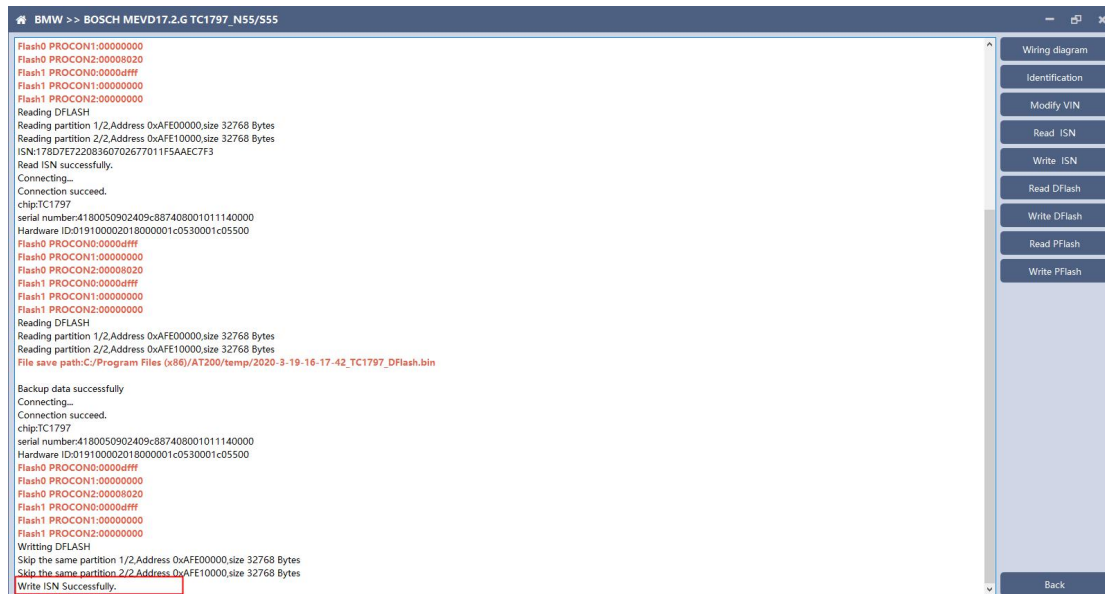


Click the "Read ISN" button to start reading the ISN. Wait for a while to complete the reading of the ISN.

5、Writing ISN

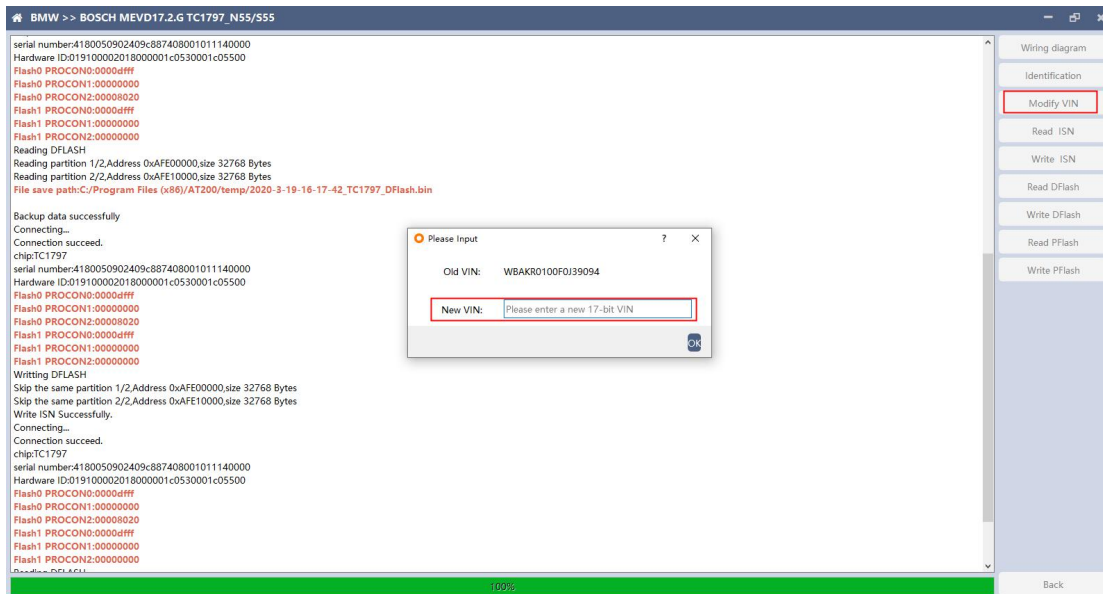


Enter the new ISN in the edit box, and click the "OK" button to start writing the ISN.



Writing successfully.

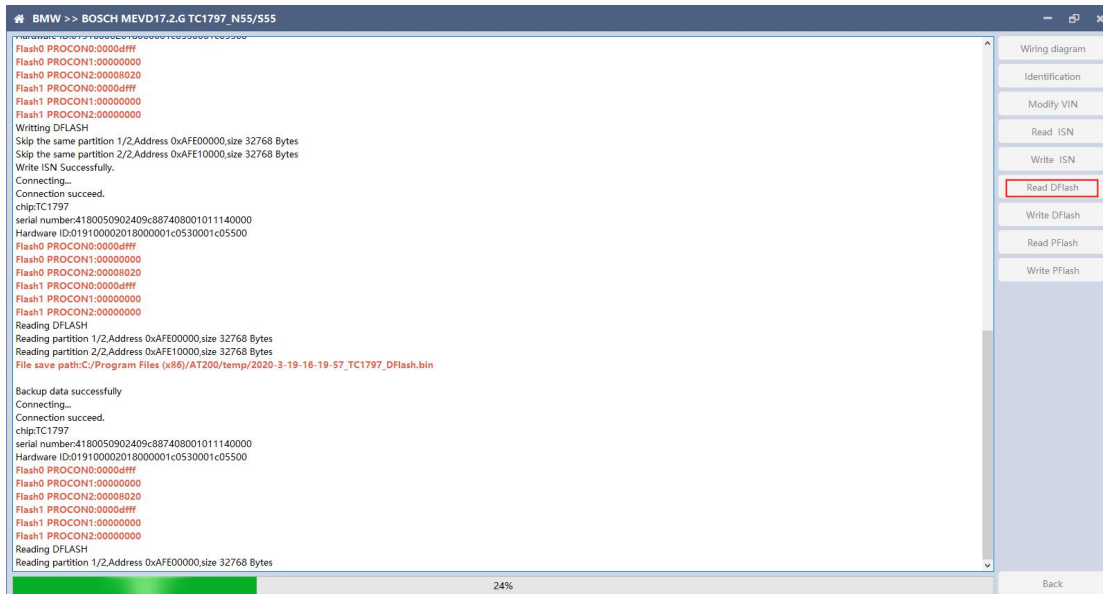
6、Modifying VIN



Enter the new VIN in the edit box, click the "OK" button to start writing VIN

7、Reading DFlash、PFlash

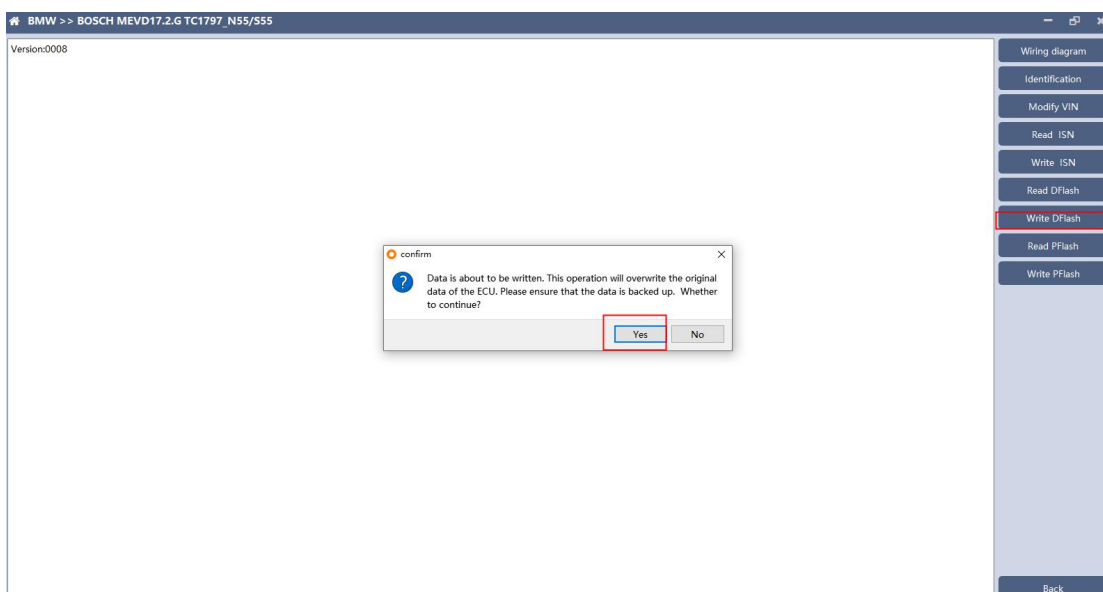
Take reading DFlash as an example



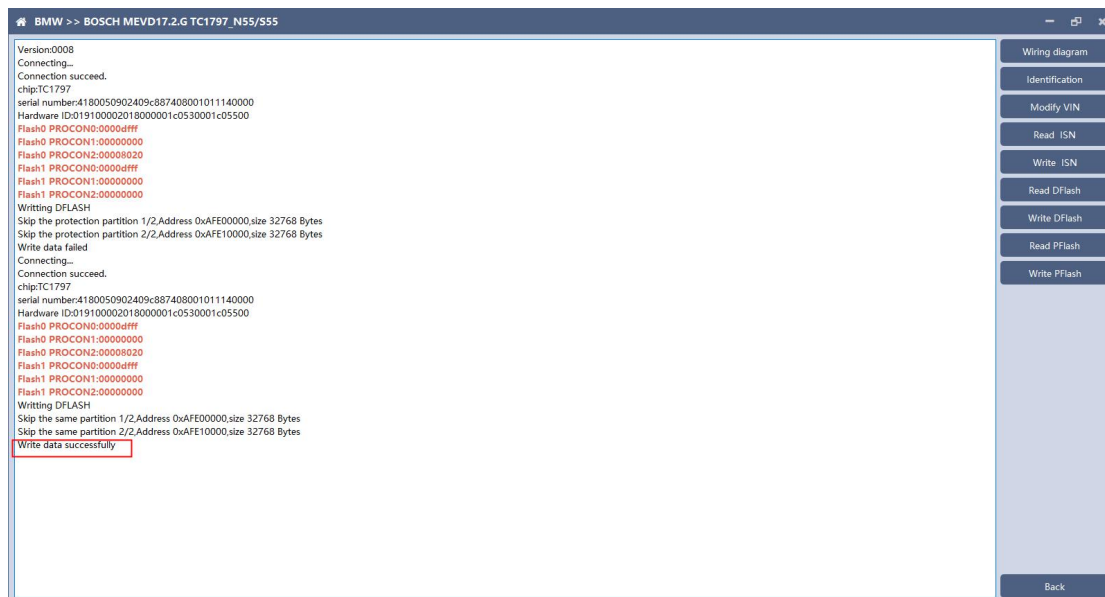
Click "Backup Data" to back up the ECU data. After reading, please save the data for subsequent use.

8、Writing DFlash、PFlash

Take writing DFlash as an example



Click "write DFlash" to write the ECU data. Please make sure the data is backed up before writing. The restored data will overwrite the current ECU data. The data can be the data of the current ECU or other ECU of the same type.

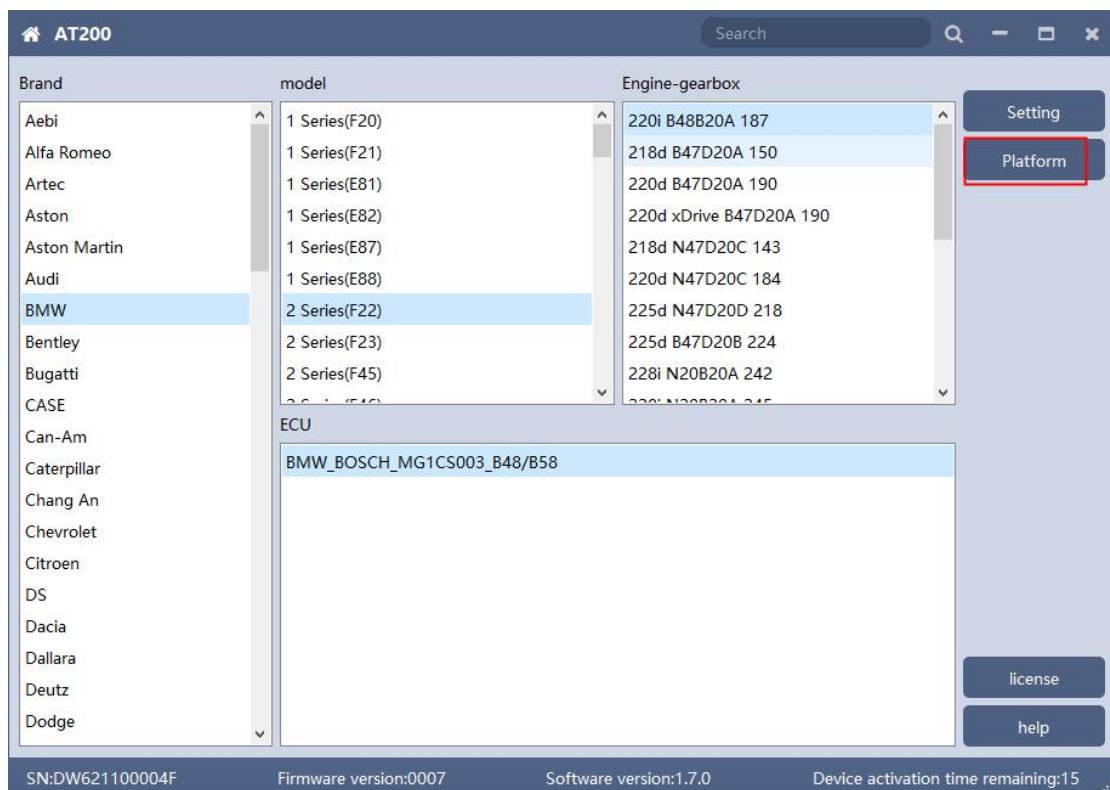


Note: During the data recovery process, it is strictly forbidden to disconnect the power supply or disconnect the device, otherwise it may cause ECU damage; if the software is shut down unexpectedly or the computer is shut down or crashed unexpectedly during the data recovery process, please do not disconnect the power supply or device Connect for 15 minutes, and the device can complete data recovery independently.

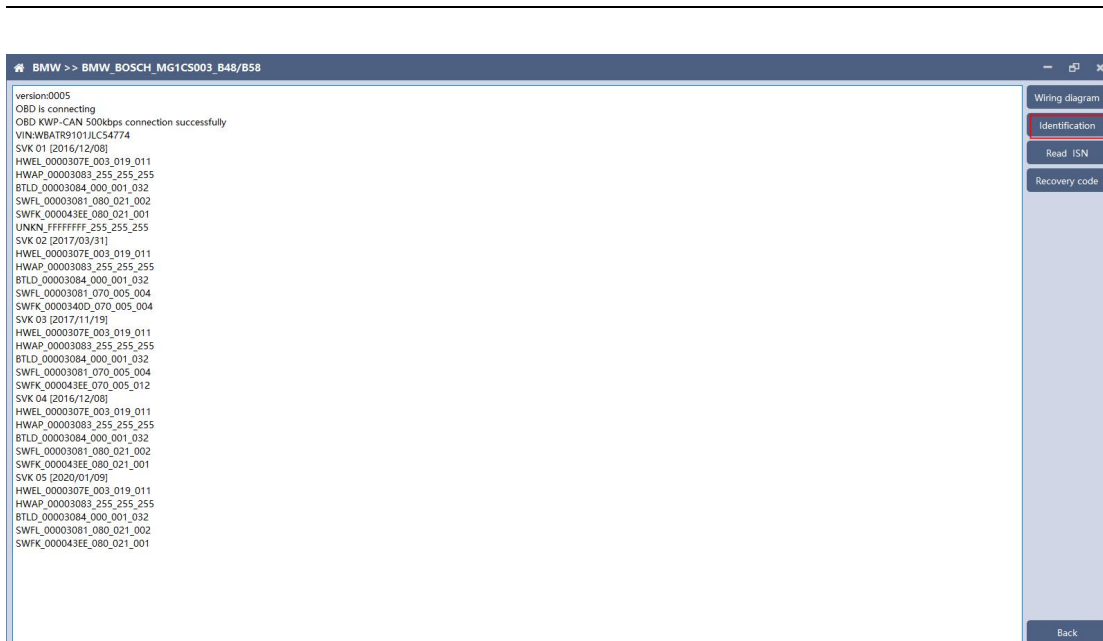
四、 B48/B58

AT200 currently supports ISN reading for BMW F020 and G series S15 models B48B and B58B.

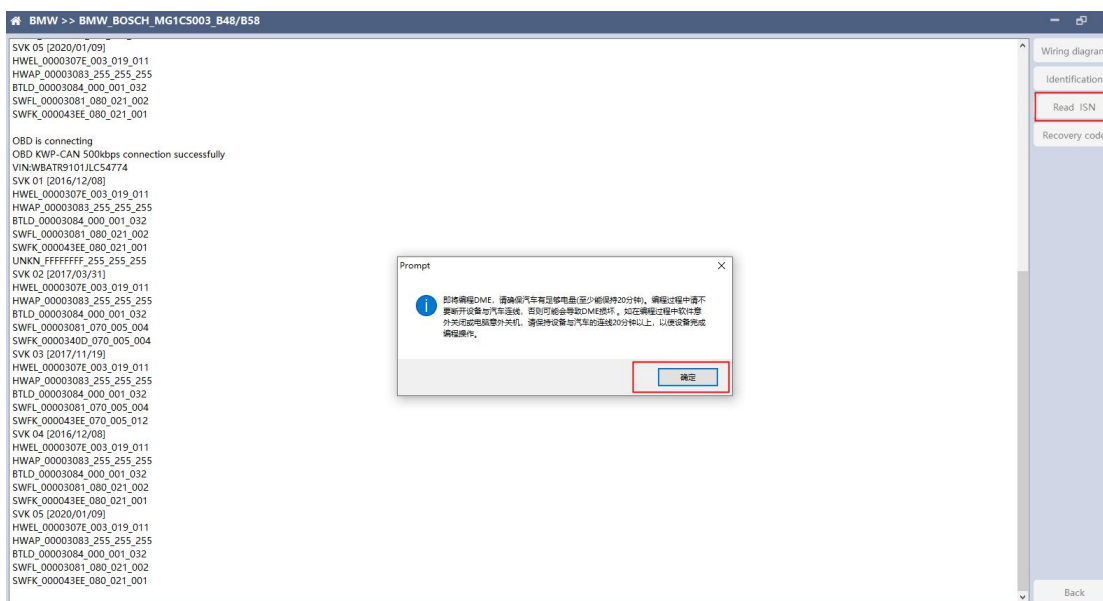
1、Determine the type of ECU according to the model, and select the correct model, otherwise it will not operate normally.



2、Identifying ECU

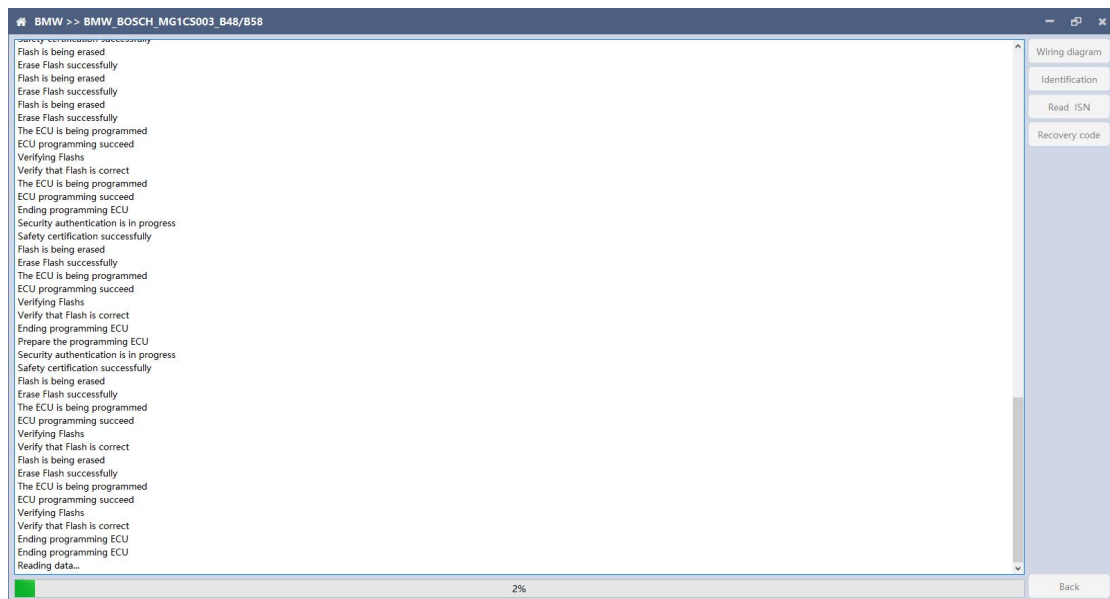


3、Reading ISN



Click the "Read ISN" button to start reading the ISN. If it is the first reading, you need to program the ECU before reading. The programming time will take about 25 minutes, please be patient.

Note: During the programming process, it is strictly forbidden to disconnect the power supply of the device or disconnect the device wiring, otherwise it may cause damage to the ECU; if the software is closed unexpectedly or the computer is shut down or crashed unexpectedly during data restore, please do not disconnect the device power or device connection. On-line, hold for more than 25 minutes, the device can complete programming independently.



After the programming is completed, if there is a coding file before the ECU programming, the coding recovery will be performed automatically. After programming, the software starts to read data, as shown in the figure above.

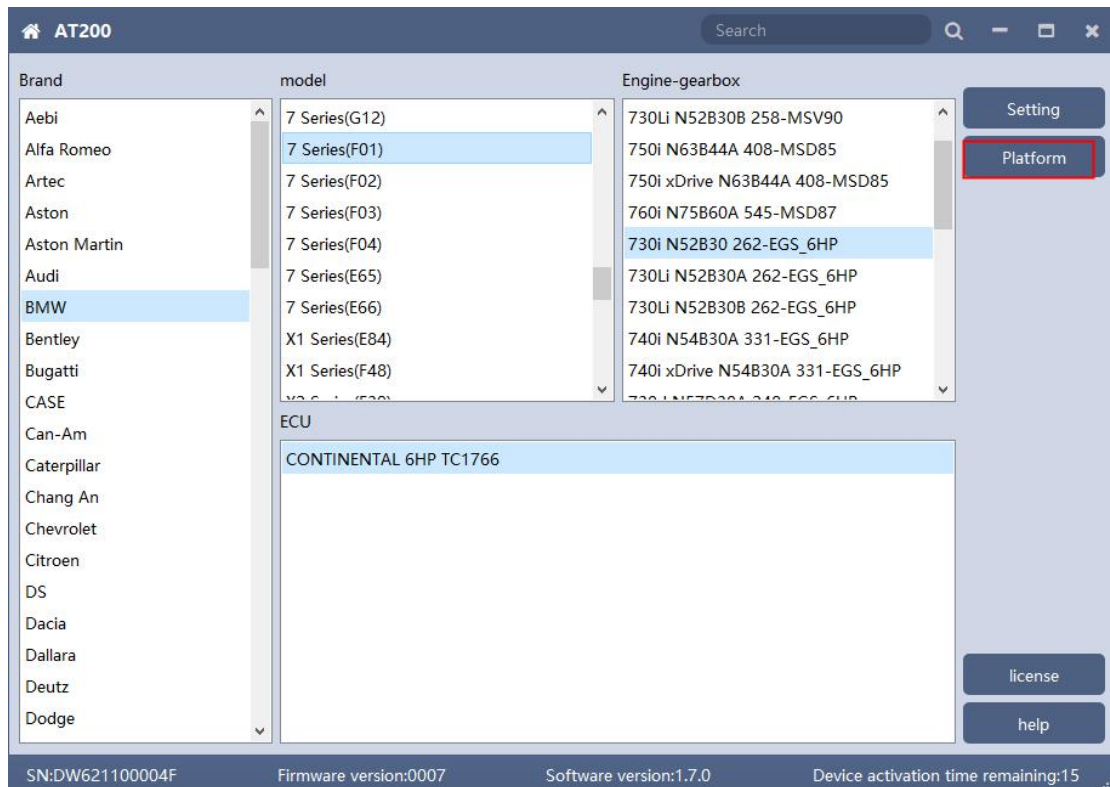


Finish reading the ISN.

五、6HP

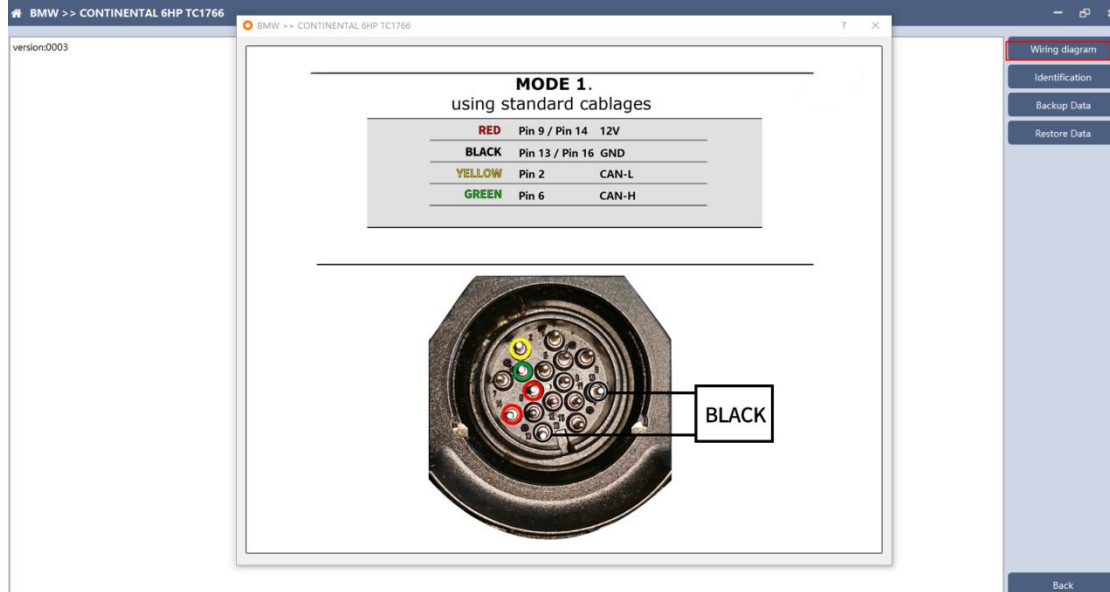
The AT200 currently supports the cloning of 6HP ECUs in BMW F-series (F01, F02, F03).

- 1、 Determine the ECU type according to the vehicle model, and select the correct model, otherwise it will not operate normally



After selecting the correct ECU model, the "Platform" button will appear on the right. As shown in the figure above, click the "Platform" button to enter the ECU operation interface.

2、 View wiring diagram



Click the "Wiring Diagram" button to view the ECU wiring diagram, connect the wiring harness correctly according to the wiring diagram, and connect with the device, plug in the device DC12V interface with 12V power supply.

3、 Identifying ECU



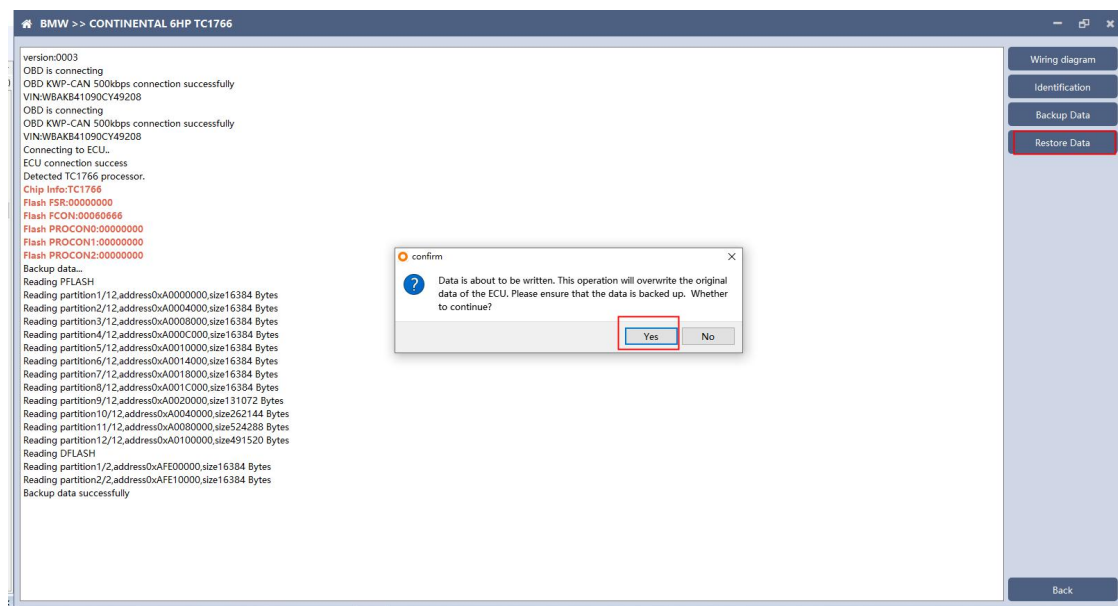
Click the "Identification" button to read the ECU related information, as shown above

4、 Backup Data

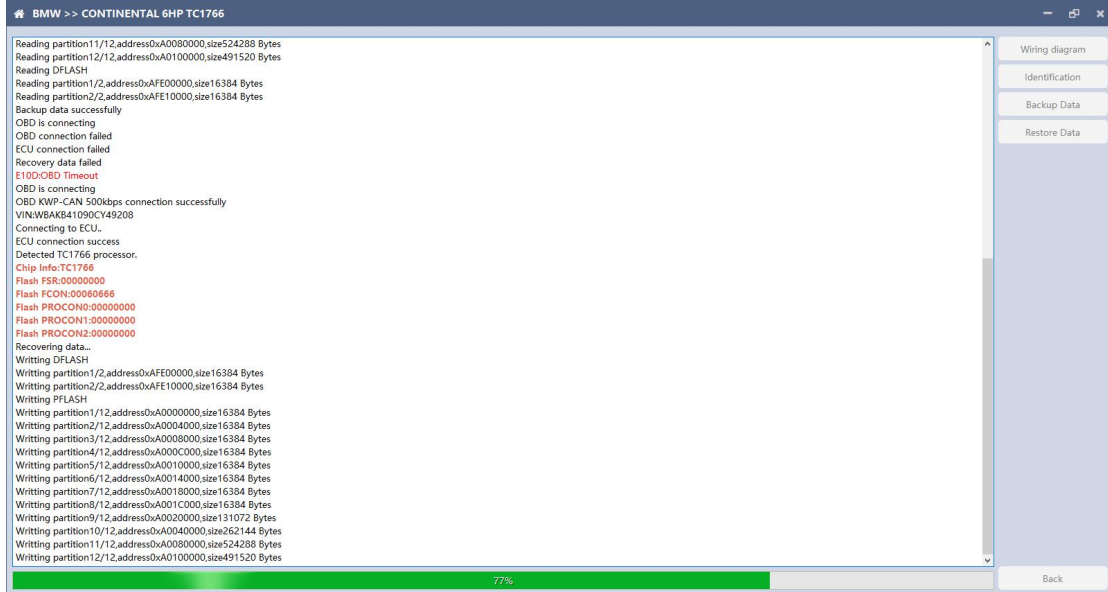


Click "Backup Data" to back up the ECU data. After reading, please save the data for subsequent use.

5、 Data Restore



Click "Restore Data" to write the ECU data. Please make sure the data is backed up before writing. The restored data will overwrite the current ECU data. The data can be the data of the current ECU or other ECUs of the same type.



Note: During the data restore process, it is strictly forbidden to disconnect the device from the power or disconnect the device; if the software is unexpectedly shut down or the computer is shut down or crashed unexpectedly during the data recovery process, please do not disconnect the device power or the device connection for 15 minutes , The device can complete the data restore independently.