

Lonsdor K518S

<http://www.uobdii.com/wholesale/lonsdor-k518s-key-programmer-basic-version.html>

VVDI-Prog

<http://www.uobdii.com/wholesale/vvdi-prog-programmer.html>

How to use Lonsdor K518S for Renault keys programming (AKL)?

Purpose: Program new keys to Renault cars (when all keys are lost)

You need:

tools to disassemble the anti-theft/immo box

[VVDI-Prog](#) to read EEPROM data

[Lonsdor K518S](#) to program keys

THE MOST IMPORTANT NOTE:

1. you can directly program a new key to pre-2010 Koleos;

For post-2011 Renault models, you need disassemble the anti-theft box to first read the backup EEPROM data, then program keys (when all keys are lost)

2. "Anti-theft system 2": generally only for Koleos.

if it fails, go to "anti-theft system 1" for cars before the 2010 year (password advice: first select Group 4)

"Anti-theft system 1": for other Renault models

Incorrect password:

If the password is wrong, please turn on the ignition and wait for 1 minute or so to try another group of password again. The error message is "login failed" or "system does not support login operation".

3. Megane password advice: first select Group 2;

4. Load.bin file into Lonsdor K518S:

use the USB cable to connect the K518S and the computer, find out and open internal memory of the K518S device, put the .bin file in the folder "customfile".

NOTE: .the bin file suffix "bin" must be lowercase;

the file directly into the folder (DO NOT create a new folder)

How to do:

Part 1: match the smart card

1. press the start button, open the driver door;
2. the system tries to get the password
if the model can be read out, please select the password. If the vehicle password cannot be recognized, please read EEPROMdata and put it into Lonsdor K518S. Then do as follows:
 - ① with the USB cable to connect Lonsdor K518S programmer to the computer, the computer will display K518 host internal storage;
 - ② copy the .bin (lowercase) file of CPU data to the Lonsdor K518Shost's customfile directory;
 - ③ return to the smart card match operation, select the import file for secret read.
3. insert the smart key need to match . the first key match is completed; please follow the pop-up to continue to match another keys;
4. remove the smart key if you do not continue to match keys

Renault key programming is complete.

In detail... look here:

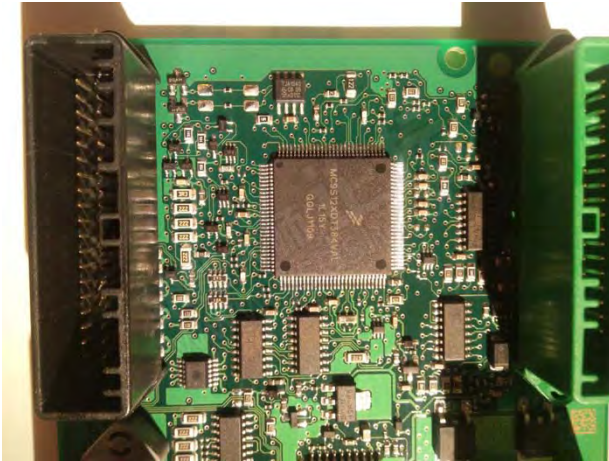
Lonsdor K518 Program Renault Koleos 2011 Smart Key



Step 1: Remove BCM

Disassemble BCM immo box and find CPU chip XDT384

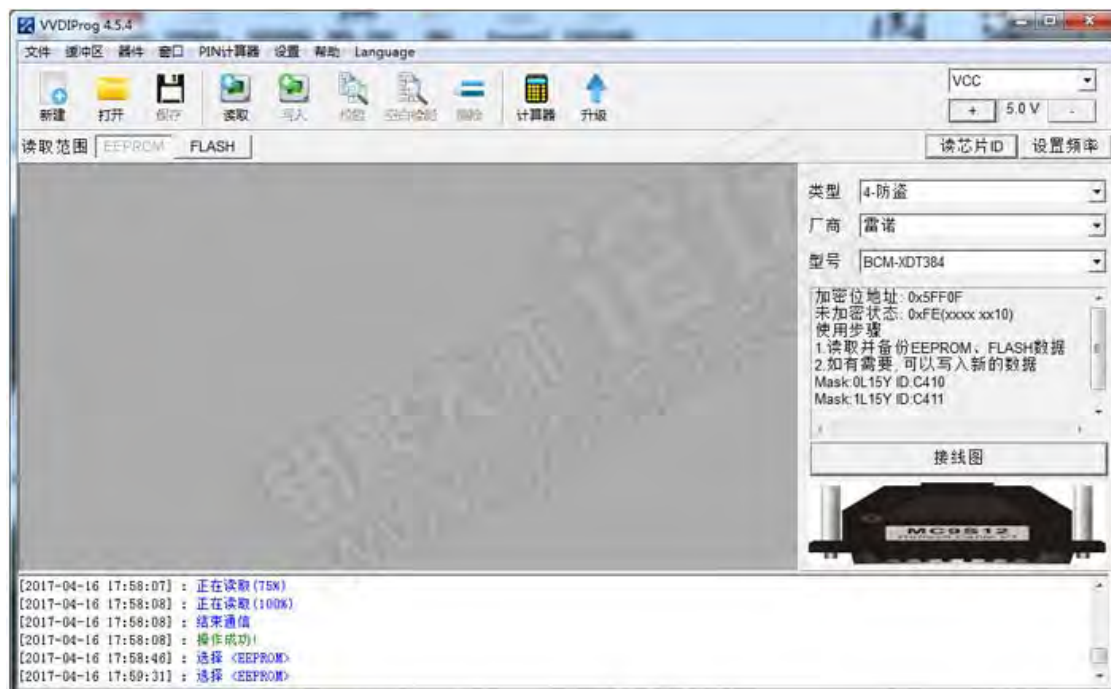




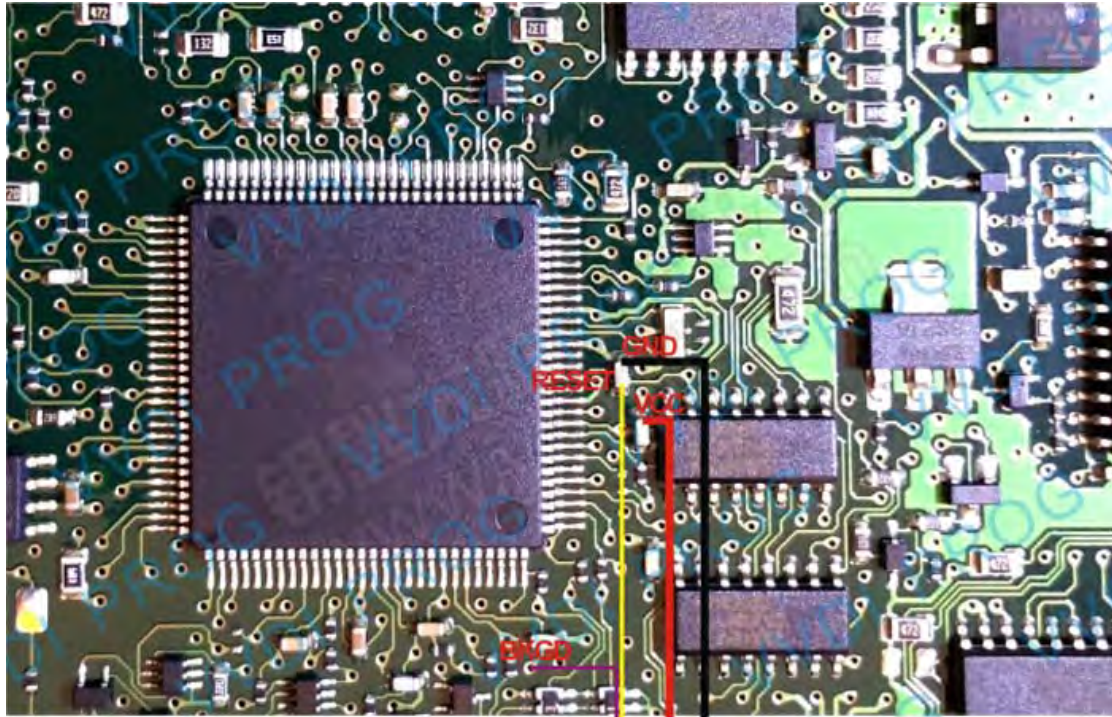
Step 2:VVDI Prog read EEPROM data

Open VVDI-Prog software

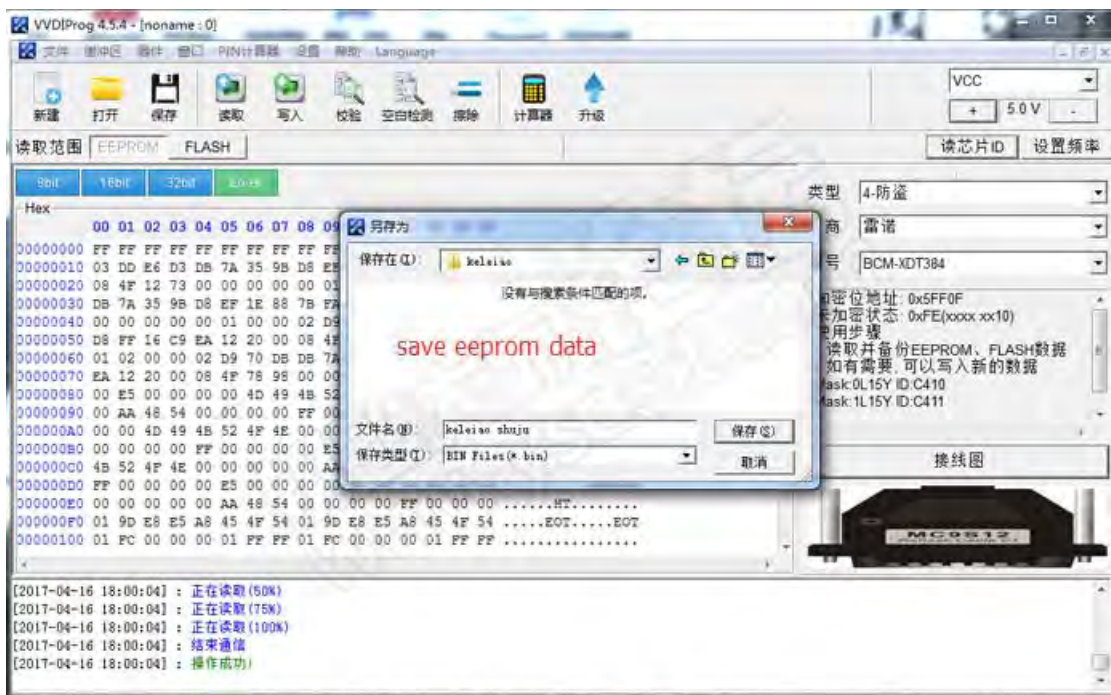
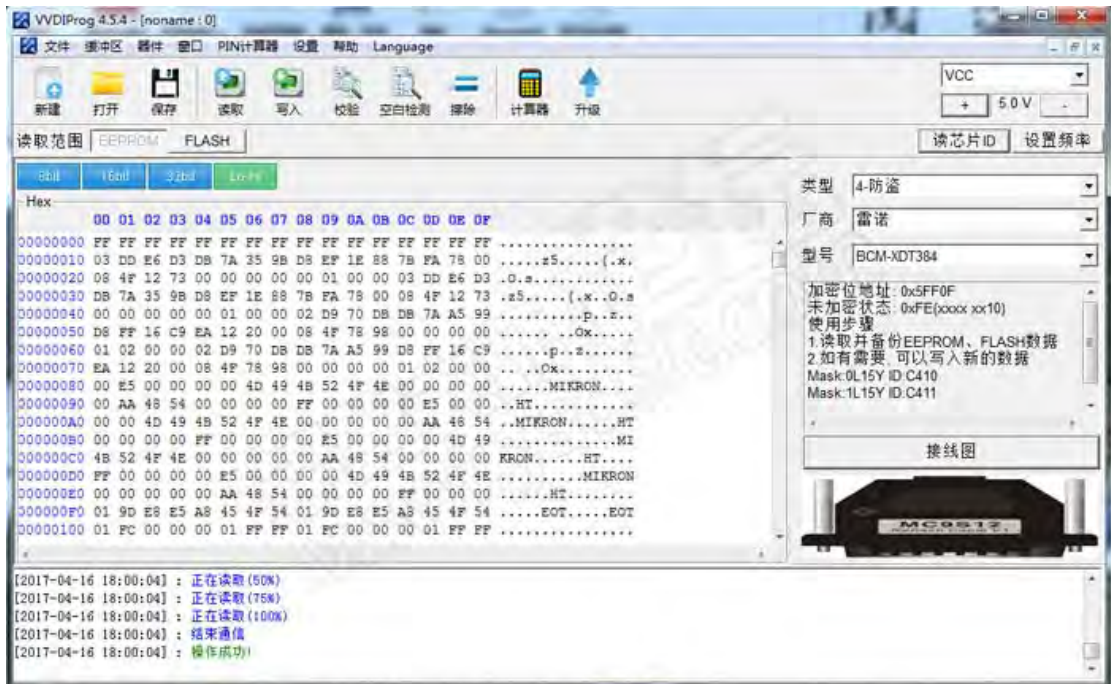
Select Renault-BCM-XDT384



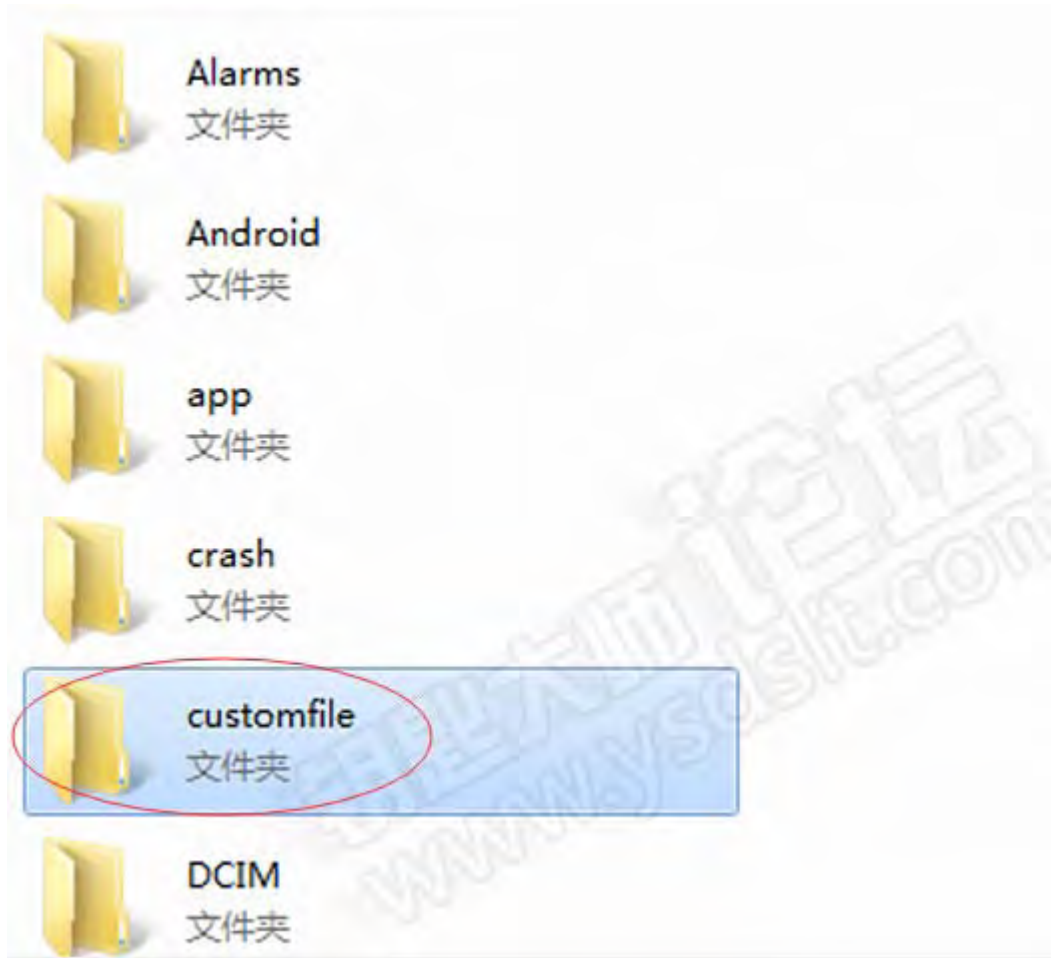
Follow vvdI programmer wiring diagram to connect



Read eeprom data and save data to bin format



Connect K518 host with laptop via USB cable
 You will see "customfile" folder on K518 software
 Copy the eeprom bin file to "customfile" folder



Step 3: Lonsdor K518 program Smart Key

Re-install BCM from car

Connect Lonsdor K518 key programmer with vehicle via diagnostic socket

Select Renault->By System->Smart Key->Immobilizer system 2->Program smart key





12.77V

防盗匹配→雷诺 Immobilizer-Renault



按系统分类

By System



12.77V

防盗匹配→雷诺→按系统分类



智能钥匙

Smart Key



Press on the Start button, press YES to continue



Open the door on driver side



Lonsdor K518S shows unable to identify pin code automatically.

Follow guides below: (We have done 1 and 2)

1. Connect K518 host with laptop via USB cable. You'll see "customfile" folder
2. Copy eeprom bin file to "customfile" folder
3. select eeprom bin file on "customfile" folder



Select Renault BCM data.bin



Insert a new smart key to be programmed into the card slot



Configuring system

Program success. Press YES to program next key



Insert next smart key into card slot
Program success.
Remove smart key



Key learning success



Part 2: start the collision recovery

If there is a car crash, the system will automatically start the protection program. and after repair, you need to first release the protection to start the vehicle.

Connect the Lonsdor K518S device, and the system communication clear fault information. Complete.

Renault key programming basic knowledge:

Chip Type: 46 chip

Remote type: specialized smart key card

Password requirement: specialized smart key card

Remote generation: program a smart key, then generate remote

OBd location: usually under the steering wheel, in front of the gear, below the central armrest box

Megane:



Koleos:



Other Renault models:



Key information:
Koleos key



Koleos key card location



www.uobdii.com