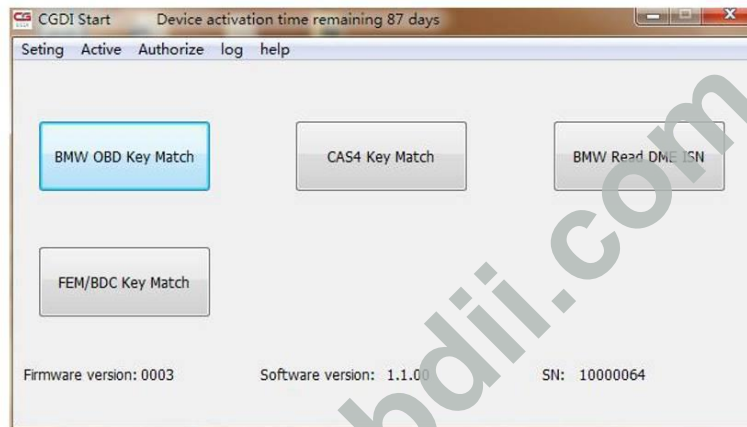


CGDI Prog Firmware & Software Update Guide

CGDI Prog Firmware Update

Step 1. Connect CGDI Pro device to the computer, open CGDI software.

Firmware

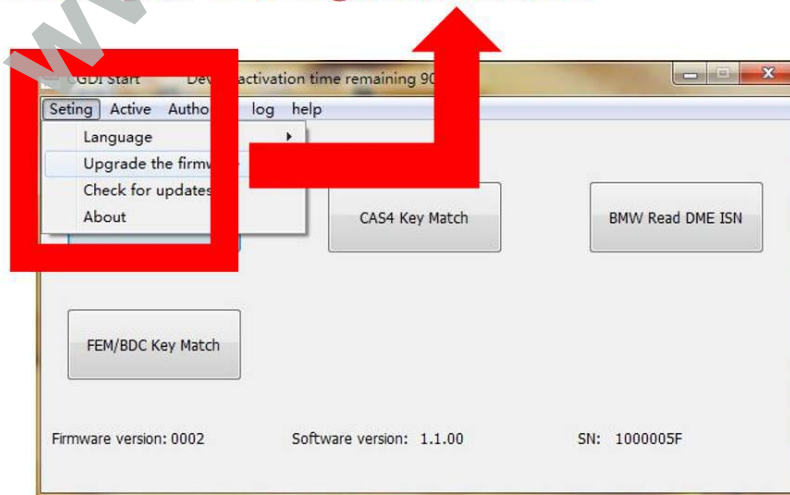


connect devices, open CGDI software

Step 2. Click on "Setting" and then "Upgrade the firmware", waiting.

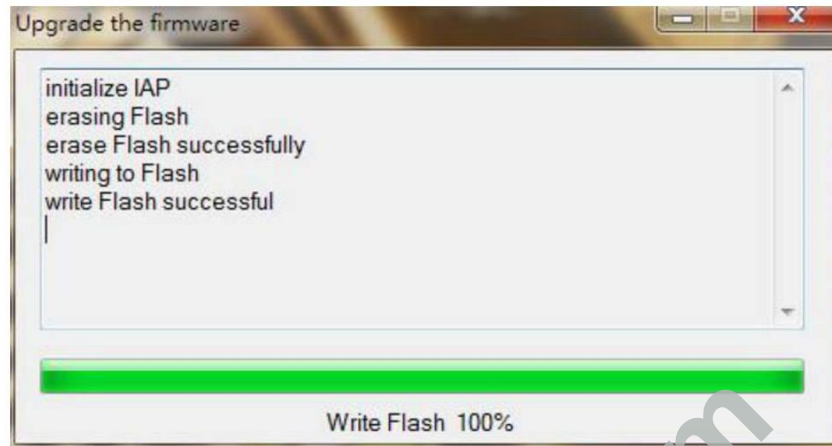
Firmware select "Setting", click "Upgrade the firmware"

waitting for entering next interface



Step 3. Updating...

Firmware

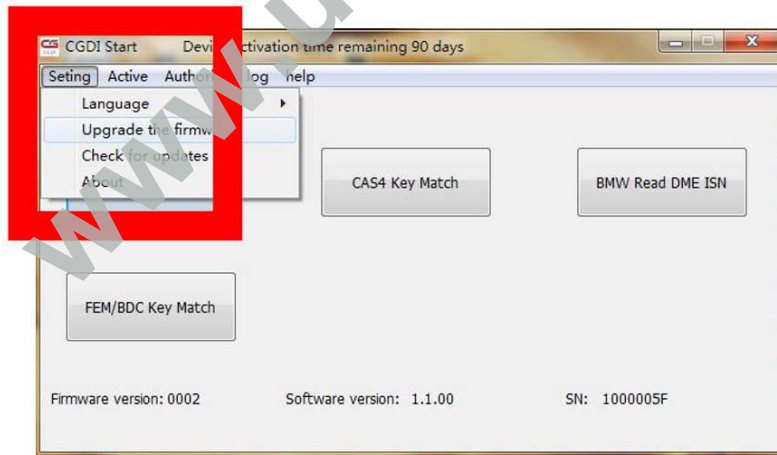


Firmware is upgrading, please do not optional operation ! ! !

Step 4. CGDI programmer firmware update successfully, again click on "Upgrade the firmware".

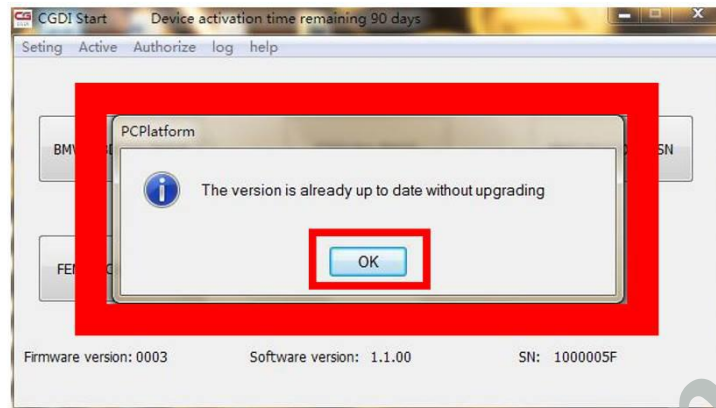
Firmware

**After Firmware updated successfully
click again "Upgrade the firmware"**



Step 5. Get message reading " The version is already up to date without upgrading". Click on "OK".

Firmware



show "The version is already up to date without upgrading"
show: firmware updated successfully, can be working normally

Done

CGDI Prog software update

Step 1. Receive message "There is a new version", click on "OK"

Software

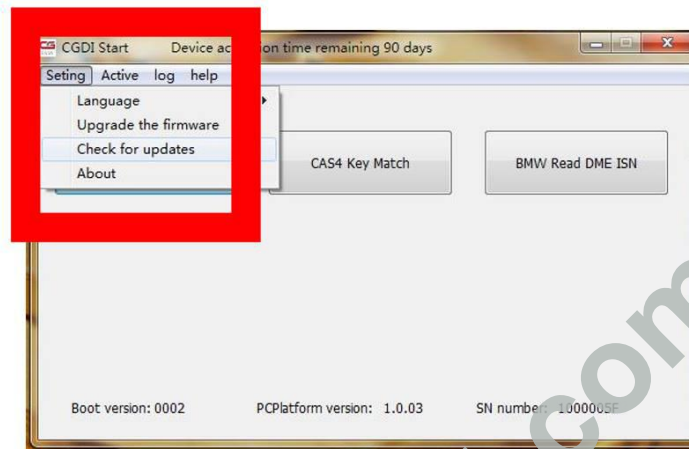


show "There is a new version" click OK

Step 2. Click on "Setting", then "Check for updates", waiting until the next dialog box appears.

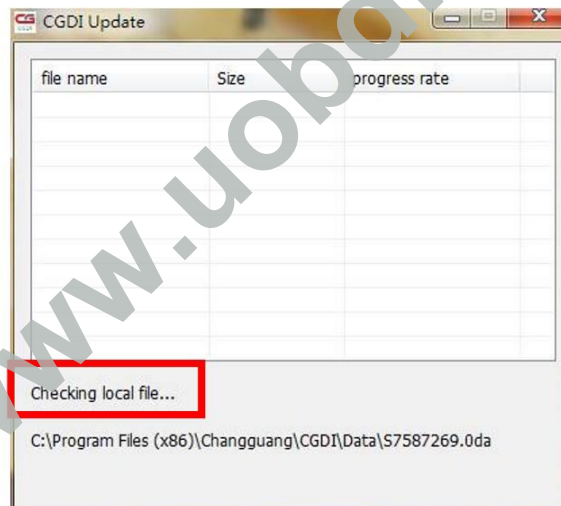
Software

**select "Setting", click "Check for updates"
waiting for entering next interface**



Step 3. Checking local file.

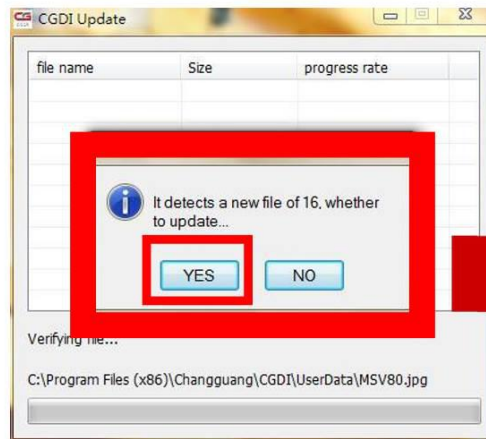
Software



checking software, pls dont operate ! ! !

Step 4. Detects a new file, click "Yes" to update.

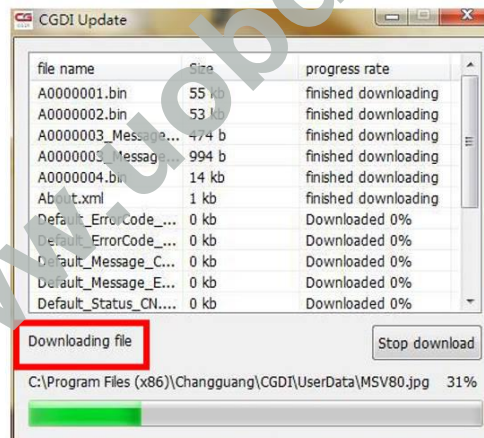
Software



finished checking, detects new file, click OK

Step 5. Downloading file.

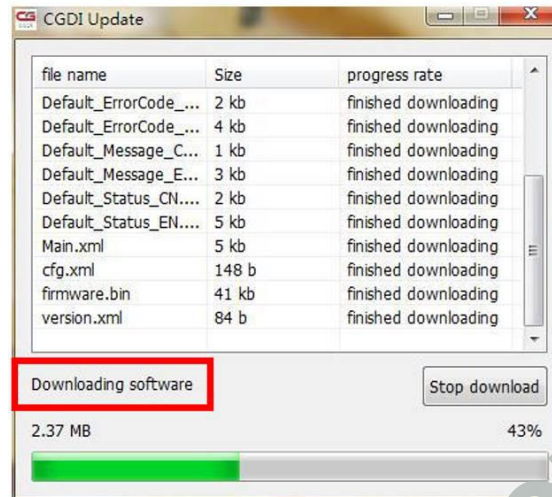
Software



downloading file,pls dont operate ! ! !

Step 6. Finish loading software.

Software

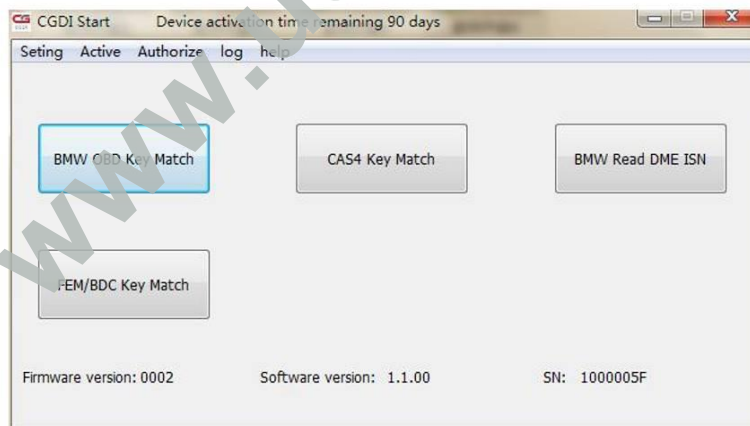


finished loading software, loading software, pls wait!

Step 7. CGDI programmer software update successfully. Ready to use the newest software.

Software

software updated successfully, can working normally



More info:

<http://www.uobdii.com/wholesale/cgdi-pro-bmw-msv80-key-programmer.html>

Done.