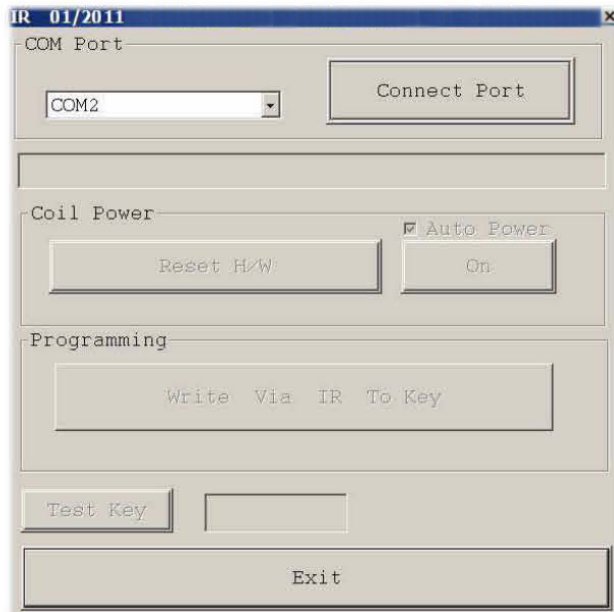


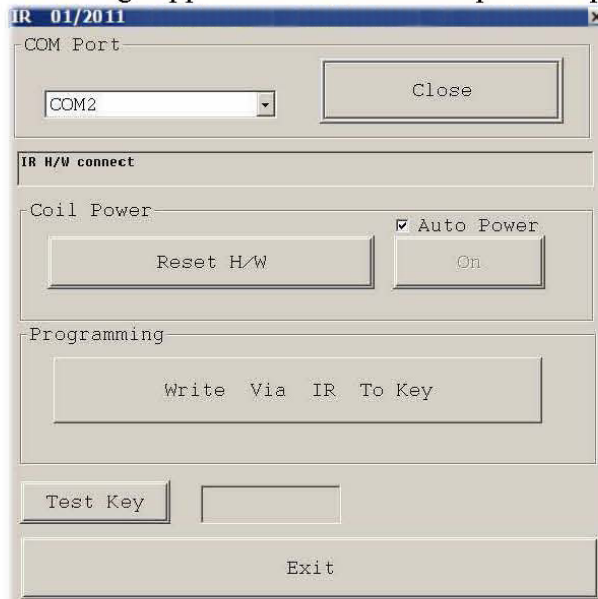
MB IR PLUS

program key

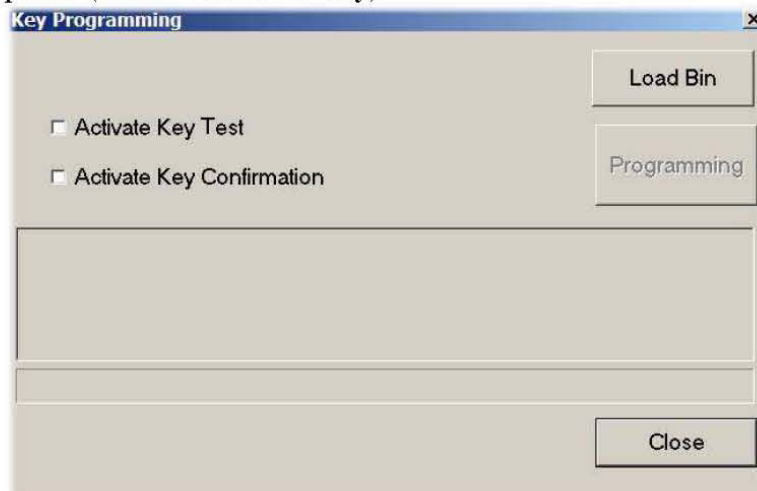
Insert key in to programmer



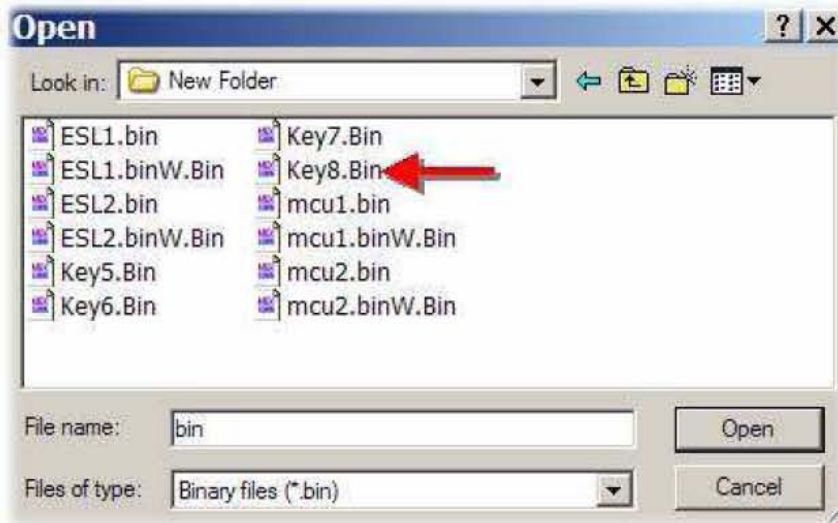
IR dialog appear select free COM port and press connect port



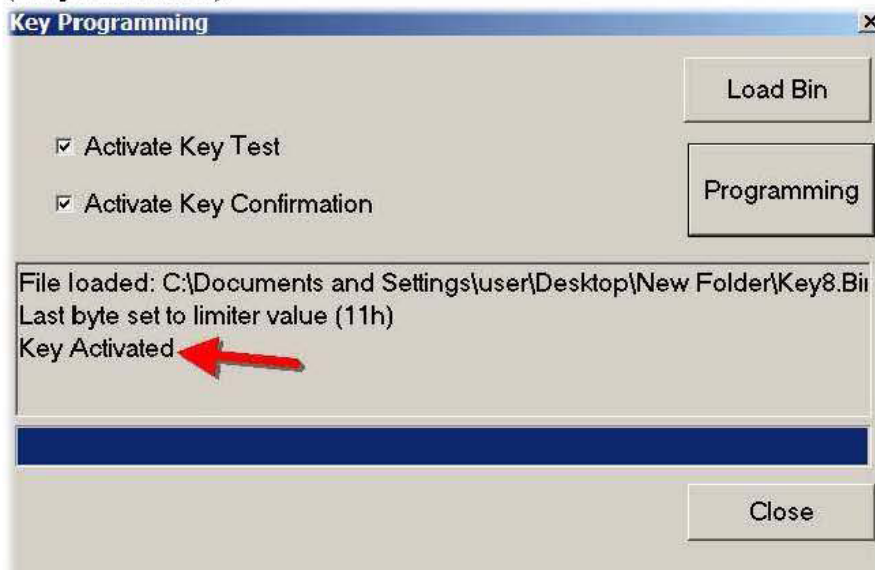
message (IR H/W connect) must appear . if no't check cabel or select eerror port .
press (Write Via IR To Key)



Key Programming dialog appear ,press load BIN to load key bin file from folder .



active tow check box and press (Programming),after few secound (Key Activated)



programming key activated

insert key into EIS , key LED on thin off thats mean every key programming is end and you can run car .

chinauobd2@gmail.com

MSN: chinauobd2@gmail.com