

22.CN900 机器安装软件过程与功能
22.CN900 install software and function.

The screenshot shows a web browser window with the address bar containing <http://www.cn900.net/down/>. The website header features the logo "CN900.NET" and a navigation menu with links for "Home Page", "Product", "News", "Download", and "Video". The main content area is titled "Relevant Download" and lists "Software, Manual" with a sub-entry for "CN900 Software".

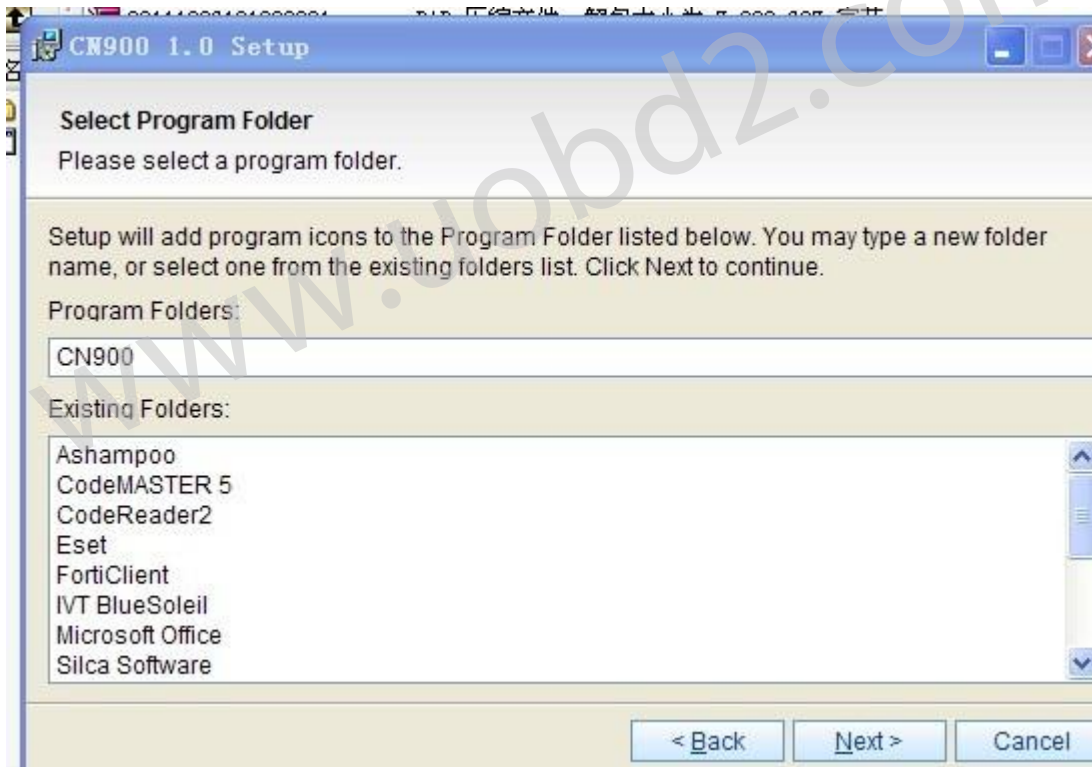
A "Download" dialog box is open, asking "您想打开或保存此文件吗?" (Do you want to open or save this file?). It displays the following information:

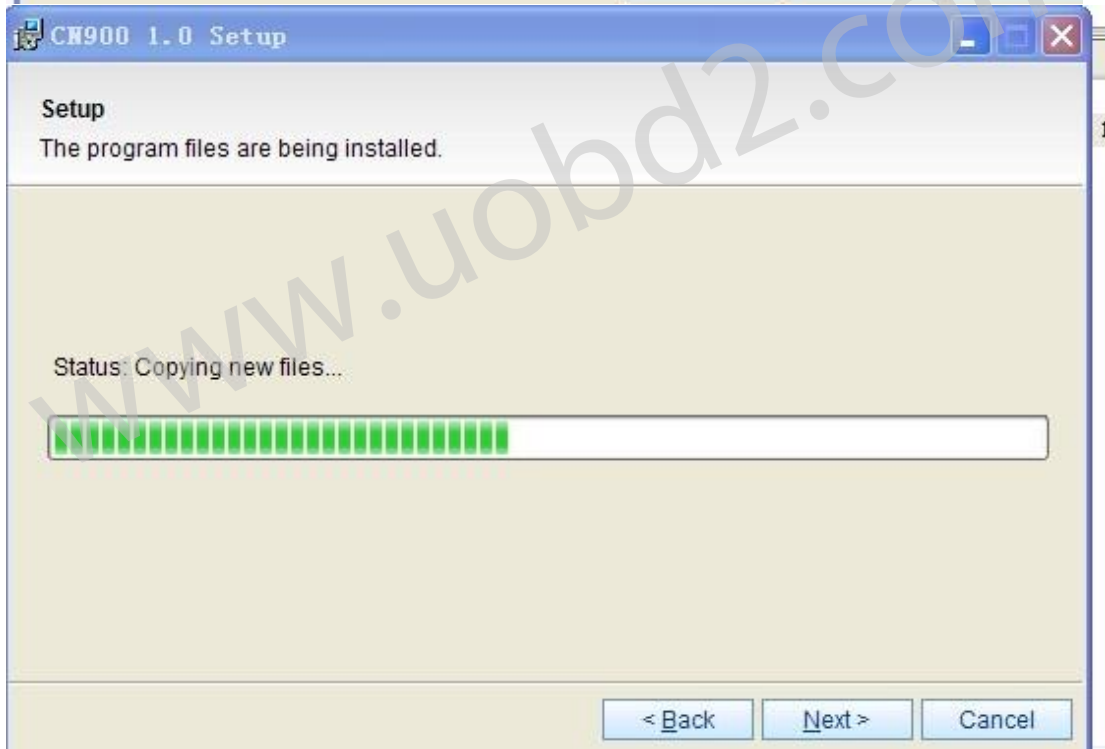
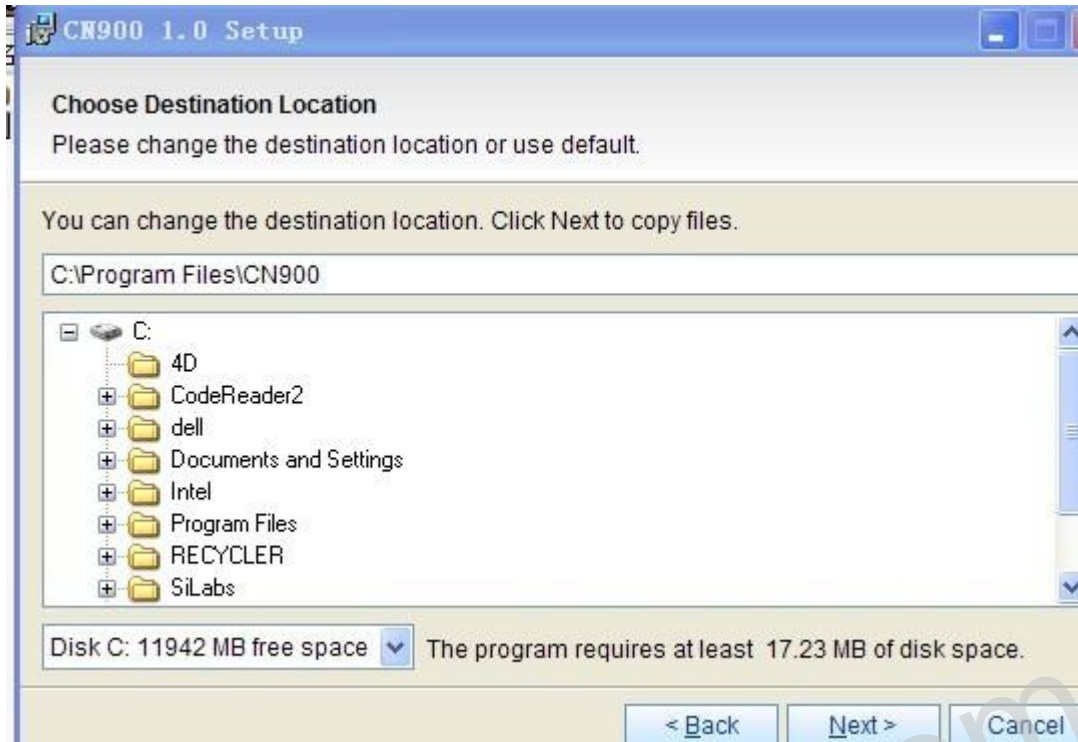
- 名称: 20111206191900001.rar
- 类型: WinRAR 压缩文件, 7.09 MB
- 发送者: www.cn900.net

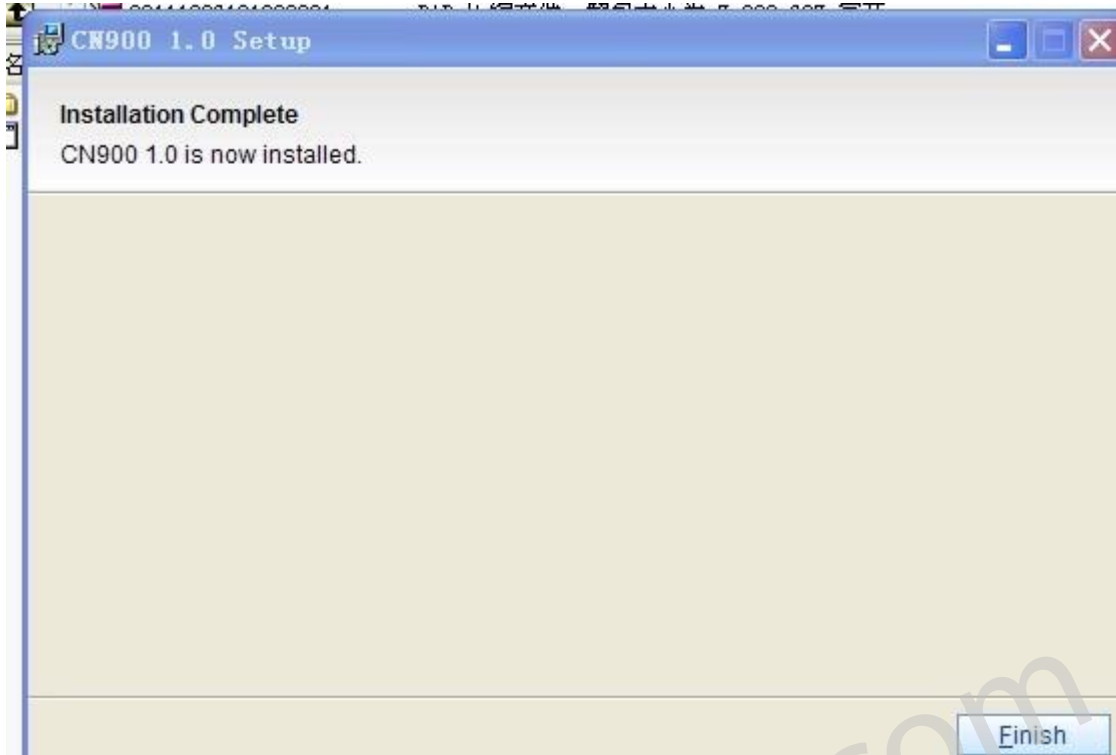
Buttons for "打开(O)" (Open), "保存(S)" (Save), and "取消" (Cancel) are visible.

Below the dialog, a "正在保存:" (Saving) progress window is shown. It indicates the file is being saved from www.cn900.net. The progress bar is nearly full. The estimated remaining time is 3 seconds (5.84 MB copied, 7.09 MB total). The download path is `C:\Documen... \20111206191900001.rar` and the transfer speed is 393 KB/秒.

At the bottom, a taskbar window for "CN900.exe" is visible, showing a size of 7,823,697 bytes and a date of 2011-12-6 1... with a hash of CDD2F5BE.







COM

Language

COM

Language

CONNECT

rel

S/N

S/N2

Additional modules

1. Renault Laguna II
2. Iveco
3. Renault Megane

cn900 - TJECV

Main Database Special EEPROM Transponder Setup

63 Texas CRYPTO EEPROM 3.10

Support: www.cn900.net

03	00	07	65	44	01	00	00	00	00	00
<input type="checkbox"/>	<input type="checkbox"/>	<input checked="" type="checkbox"/>				<input type="checkbox"/>				

ID1: E88692
ID2: DBE92F

READ

Info1

Info2

T5 NOVA
 PCF7930/31/35
 TK5550/51/54/57
 TEXAS EMU/TXP

ADD TO DATABASE **WRITE**

OK

HTAG2

Configuration

PSW: 4D 49 4E 52
4F 4E

Factory

Mode

Password mode
 Crypto mode

Transponder

PCF7936
 PCF7942/44
 PCF7943
 PCF7946

Detect

31	bits	0	TM
0	00 00 00 00	00	SN/IDE
1	00 00 00 00	00	Crypto/ISK Lo
2	00 00 00 00	00	Crypto/ISK Hi
3	00 00 00 00	00	TMCF/PSW
4	00 00 00 00	00	User 0
5	00 00 00 00	00	User 1
6	00 00 00 00	00	User 2
7	00 00 00 00	00	User 3
4	00 00 00 00	00	RSK Lo
5	00 00 00 00	00	RSK Hi
6	00 00 00 00	00	PCF
7	00 00 00 00	00	SYNC

IDE

1 1

2 2

3 3

4 4

5 5

6 6

7 7

0-7

4 4

5 5

6 6

7 7

Save TM Load TM Load config Load TM + config

Transponder Setup

H900 - TJECU

Main Database Special EEPROM Transponder Setup

1. Opel IMMO2 Siemens [TP]

TMS370C702 256 bytes
Opel
ID: 40
Transponder type: PCF7935 precoded
Transponder is ready programmed to start the vehicle

DUMP

Format
 8 bit 16 bit

Open file View file

PROGRAM TRANSPONDER

CALCULATE PIN

Transponder PIN

