
Ford

Select the model:

Model Scorpio

Model Focus

Model Fiesta

Model Cougar

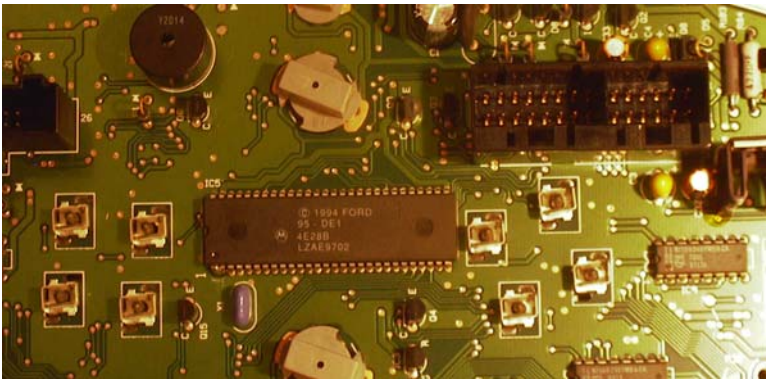
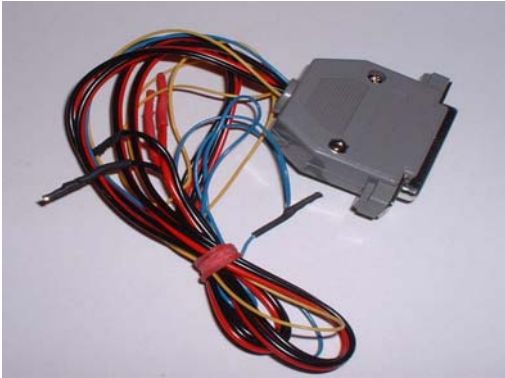
Model Galaxy before 6/2000

Model Galaxy after 7/2000

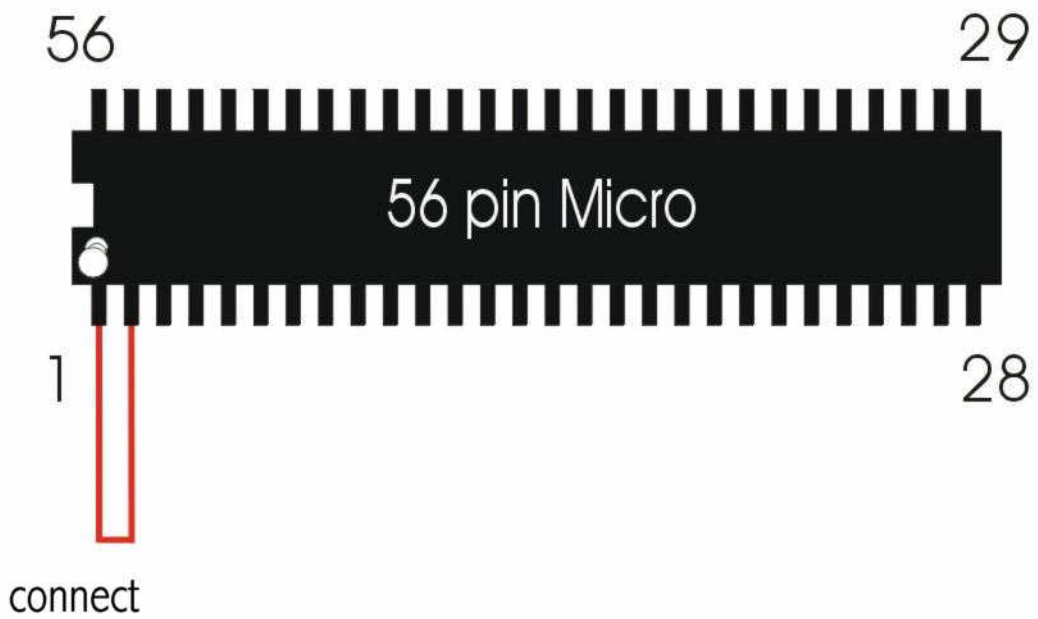
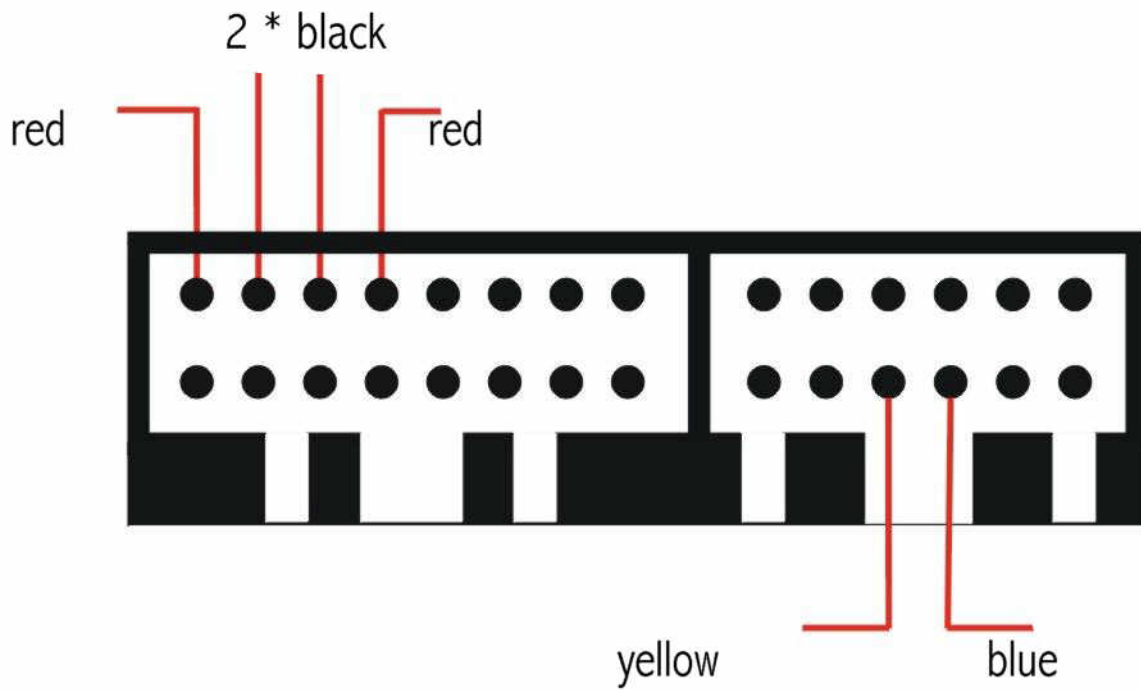
Model Mondeo

Model Scorpio

Use the Scorpio plug:



- Remove the cluster and open it.
- Connect the cables as shown in the picture.
- Connect pin 1 and pin 2 of the processor.
- Select the menu **Ford-Scorpio**
- The Tacho Universal shows you the old value.
- Enter the new value.
- Verify the new value with **OK**.



Model Focus

Use the Scorpio plug:

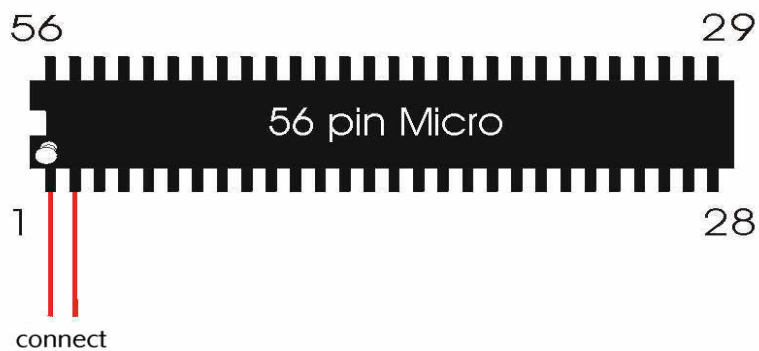
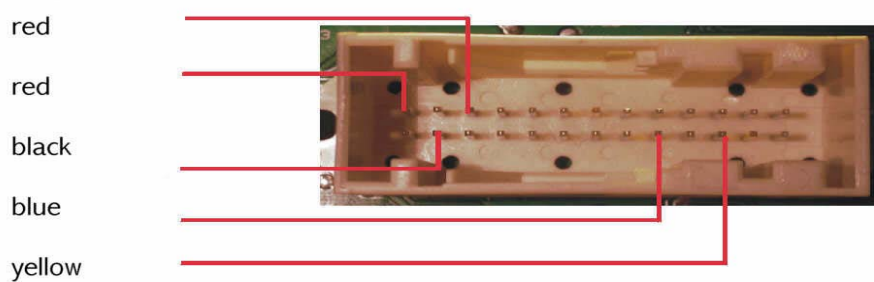


26pin white port

- Pin 2 GND(-) black
- Pin 9 RX (Data) blue
- Pin 11 TX (Data) yellow
- Pin 14 12V (+) red
- Pin 16 12V (+) red

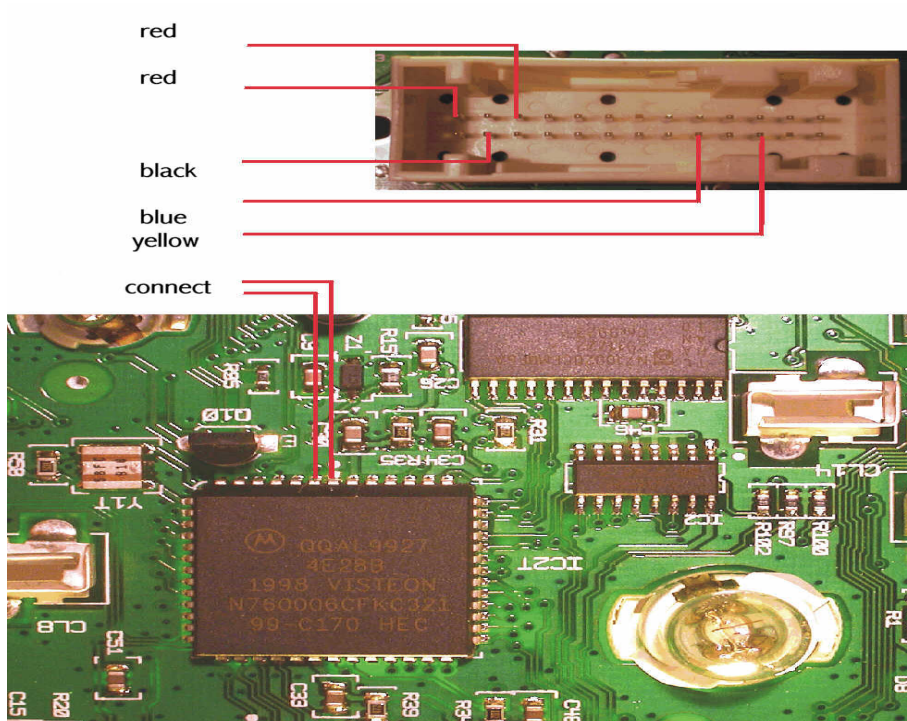
Processor version 1:

- Connect Pin 1 (left side down) and pin 2 (right from pin 1),
or connect black to test point 3 (TP3).



processor version 2:

- Connect pin 1 (middle upside) and pin 2 (left beside pin 1),
or connect black to testpoint 46 (TP46).



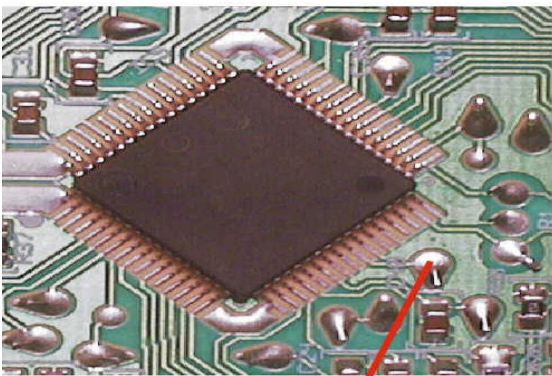
- Remove the cluster and open it.
- Connect the cables as shown in the picture.
- Select the menu **Ford-Focus**
- The Tacho Universal shows you the old value.
- Enter the new value.
- Verify the new value with **OK**.

Model Fiesta

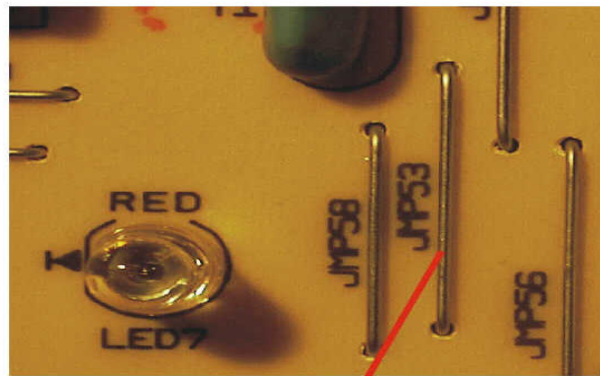
Use the scorpio plug:



Version 1:



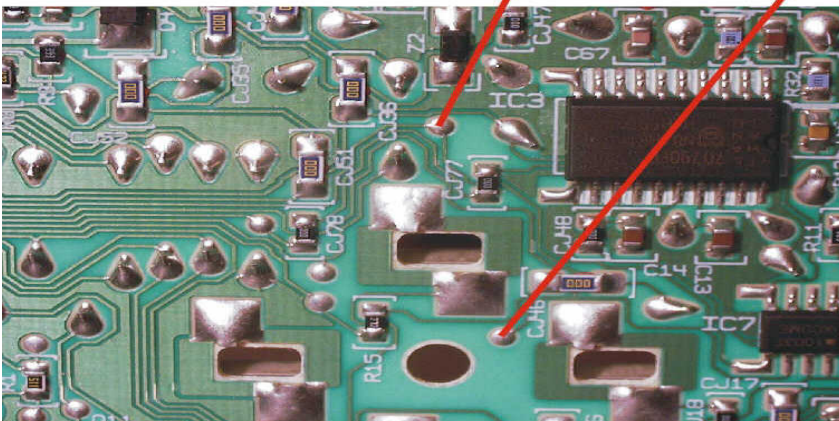
black



cut

blue

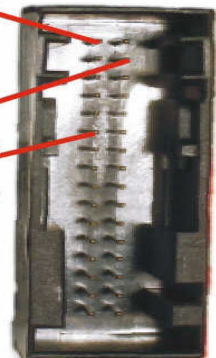
green

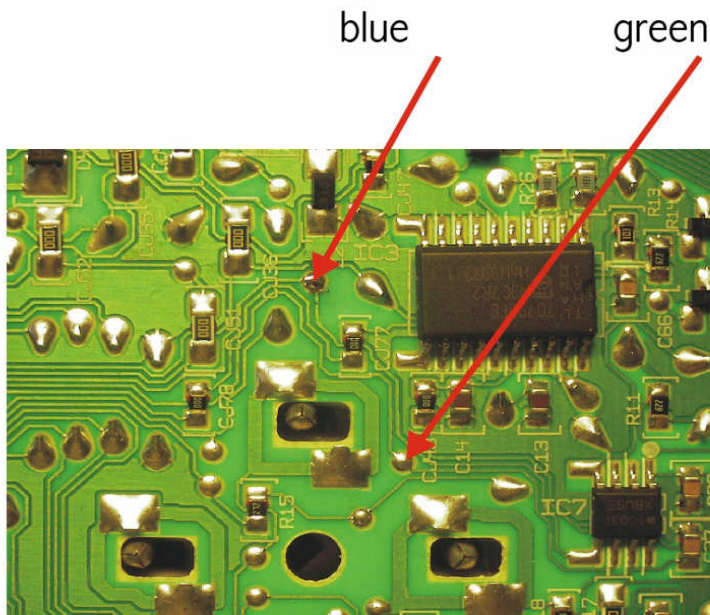


black

red

red





Version 2:

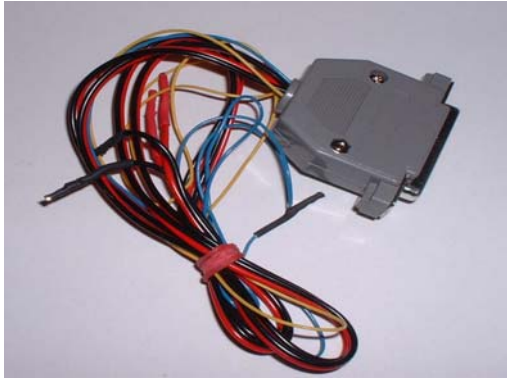
Only difference for version 2 is the blue and green cable.

For some Scorpio plugs the green cable may also be yellow, the functions are the same!

- Remove the cluster and open it.
- Connect the cables as shown in the picture.
- Select the menu **Ford-Fiesta**.
- The Tacho Universal shows you the old value.
- Enter the new value.
- Verify the new value with **OK**.

Model Cougar

Use the Scorpio plug:



- Remove the cluster and open it.
- Lift the pins for the yellow and blue cable.
- Connect the cables as shown in the picture.
- Select the menu **Ford-Cougar**.
- The Tacho Universal shows you the old value.
- Enter the new value.
- Verify the new value with **OK**.

Model Galaxy before 6/2000

Diagnostic programming

Use the OBD II -plug:



The diagnostic port is under the ashtray.

- Turn ignition on.
- Connect the Tacho Universal to the OBD II plug and the diagnostic port.
- Select the menu **Ford-Galaxy**
- Write down the old code.
- Set to 0. Now the display shows about 20 km.
- Now adjust the mileage.
- Now put back in the code you have written down.

Note:

If the display says **ERROR** repeat everything with a **different** value!

Model Galaxy after 7/2000

Diagnostic programming

Use the following plugs:

OBD II



Audi A6 old



VW new



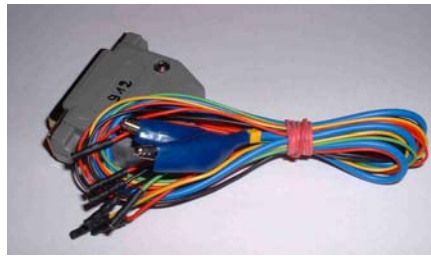
Connect those plugs together. If the VW new does not fit to the A6 old, you have to remove one of the pins in the A6 old plug. You can see which one it is, otherwise the plugs will not fit together. The A6 plug will still keep all functions!

The diagnostic port near your left knee when you sit on the driver's seat.

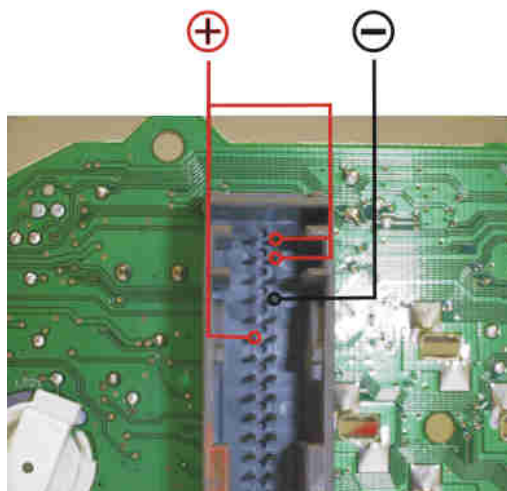
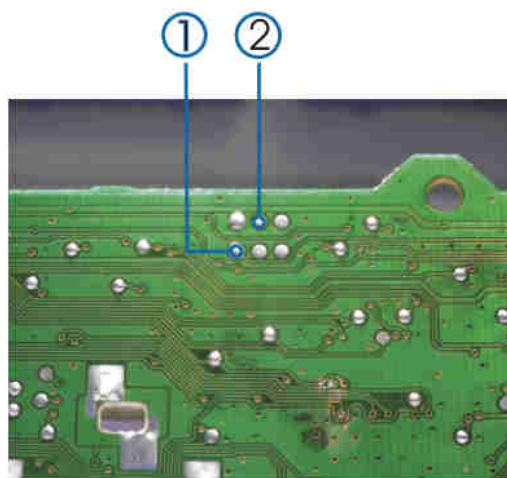
- Turn ignition on.
- Connect the Tacho Universal to the plug and the diagnostic port.
- Select the menu **VW-Sharan-Sharan 2000-Diagnosis**
- The Tacho Universal shows you the old value.
- Enter the new value.
- Verify the new value with **OK**.

Model Mondeo

Use the 912 plug:



Ford Mondeo



plug 912

-
- Remove the cluster and open it.
 - Connect the cables as shown in the picture.
 - Select the menu **Ford-Mondeo**
 - The Tacho Universal shows you the old value.
 - Enter the new value.
 - Verify the new value with **OK**.