

ALLScanner

VXDIAG

User Manual

用户手册



V1.0 / 2014

General Information



Please review the product manual carefully, handle the product in strict accordance with the manual.

Welcome To Use

Thanks for purchasing a product from ALLScanner Tech Co., Ltd. This manual provides a comprehensive overview and standard configuration for users.

This manual describes product information, hardware connection, software installation and usage etc significant information. Please read this instruction manual and familiarize yourself with your device before operating. The manual only states the operational method of use, specific vehicle diagnosis and maintenance please refer to original maintenance manual. ALLScanner reserves the rights to make any change to product designs and specifications without notice.

Copyright

Copyright © 2014 by ALLScanner Tech Co., Ltd. All rights reserved. No part of this publication may be reproduced, stored in a retrieval system, or transmitted in any form or by any means, electronic, mechanical, photocopying, recording or otherwise, without the prior written permission of ALLScanner.

Trademark

ALLScanner[®] is a registered trademark of ALLScanner Tech Co., Ltd.

VXDIAG is a registered trademark of ALLScanner Tech Co., Ltd.

In addition to the above-mentioned, All other names of actual companies and products mentioned herein may be the trademarks of their respective owners.

Product Introduction

Profile

Brand-new design VXDIAG, first integrated the three automotive industry standards, supports all major vehicle bus protocols, have strong compatibility and it is the best equipment to realize OEM level diagnostic functions.

Features

One Device to Support Multiple OEM Diagnostics

- Achieved the world's most of brand OEM level vehicle diagnostic, One device can replace mass expensive OEM tools
- Advanced Diagnostics fully consistent with the OEM tools, even beyond the OEM tools
- One-click to install OEM support driver and update online, Easy to use

Brand-New Design VXDIAG Hardware

- Equipped with high-speed processor VXDIAG is a high-performance Vehicle Network Interface
- Support 4 x CAN BUS and 2 x K-Line/L-Line, support multi-protocol high-speed and concurrent communication
- With the innovation design of OBD-II intelligent bus multiplex hardware, one device can diagnosis all models and fully meet the future demand for complex vehicle communication.
- Supports 24V heavy-duty and diesel vehicles communication
- Rugged design can be used in a variety of harsh environments

Compatible with Three Automotive Industry Standard

- SAE-J2534-1/2 Pass-Thru Driver with EURO 5

- ISO-22900-1/2 MVCI with D-PDU Driver
- RP-1210A/B/C Heavy Duty VDA Driver

J2534 OEM Level ECU Reprogramming Function

- ECU software update and calibration
- ECU replace flash and programming

OEM Vehicle Diagnostic Function

#	OEM	Diagnostic Software	Compatible	Status
1	PASSTHRU	SAE-J2534-1/2 Pass-Thru	YES	Release
2	PORSCHE	Porsche PIWIS-II Tester	YES	Release
3	TOYOTA	TOYOTA Techstream TIS	YES	Release
4	HONDA	HONDA Diagnostic System HDS	YES	Release
5	SUBARU	SUBARU Select Monitor SSM	YES	Release
6	VOLVO	VOLVO VIDA	YES	Release
7	JLR	Jaguar & Land Rover SDD	YES	Release
8	CHRYSLER	Chrysler wiTECH Diagnostic	YES	Develop
9	GM	GM GDS2	YES	Develop
10	GM	GM Tech2Win	YES	Develop
11	FORD	FORD IDS	YES	Develop
12	MAZDA	MAZDA IDS	YES	Develop
13	KIA	KIA GDS	YES	Develop
14	HYUNDAI	HYUNDAI GDS	YES	Develop
15	MMC	Mitsubishi MUT-III	YES	Develop
16	NISSAN	* NISSAN Consult-III Plus	YES	Develop
17	SUZUKI	* Suzuki SDT-II	YES	Develop
18	VAG	* VW & AUDI ODIS	YES	Develop
19	BMW	* BMW RHEINGOLD ISTA/D	YES	Develop
20	BENZ	* BENZ XENTRY	YES	Develop
21	FERRARI	* Ferrari DEIS Tester	YES	Develop
22	MASERATI	* Maserati Diagnosi MDVCI	YES	Develop

Vehicle Protocols Coverage

Supported Automotive Protocols	ISO-9141 K-Line ISO-14230 K-Line ISO-15765 CAN SAE-J1850-VPW (GM Class2) SAE-J1850-PWM (FORD SCP) ISO-11898-2 DWCAN ISO-11898-3 DWFTCAN SAE-J2411 Single Wire CAN (GMLAN) VAG TP16 CAN VAG TP20 CAN (SAE-J2819) VAG KW81 (SAE J2818) SAE-J2610 SCI (Chrysler) SAE-J1567 CCD BUS (Chrysler) SAE-J2740 GM ALDL SAE-J2809 (HONDA DIAG-H) NISSAN DDL UART with CLOCK BMW DS2 FORD UBP
Supported Heavy-duty Protocols	CAN125/CAN250/CAN500/CAN1000 SAE-J1939 CAN SAE-J1708/J1587 On RS485 CAT DATALINK (Caterpillar) ATA DATALINK (Caterpillar)

Specifications

ITEM	DESCRIPTION
CPU	32bit 180MHz ARM CPU
Storage	1MByte
Cable Interface (PC)	USB2.0
Network Interface (Optional)	LAN 10/100M Ethernet
Wireless Interface (Optional)	WLAN 802.11 b/g/n Wi-Fi

Diagnostic Interface	24PIN highly reliable and easy-swap interface to OBD-II 16PIN
Indicator Light	4 LED: Power, Wireless, Host and Vehicle.
Power	Vehicle power input: DC 9V-36V Compatible: 12V&24V
Power Dissipation	2W
Size	L x W x H = 175 x 110 x 45 (mm)
Weight	Device Weight: 0.6 Kg Package Weight: 2.3 Kg
Shell	Aluminum metal & Rugged plastic shell
Working Temperature	-20 ~ +70 °C
Storage Temperature	-40 ~ +85 °C
Standard Certification	Certification of Euro CE and US FCC

Product Overview



Device Operation Status (Red)



Wireless Network Status (Blue)



Host Communication Status(Blue)



Vehicle Communication Status(Blue)

Product Package



VCI Device



USB LAN cable



OBD-II diagnostic cable



Tool box and package



CD, User Manual, Fix Card

Software Setup

Computer Requirements

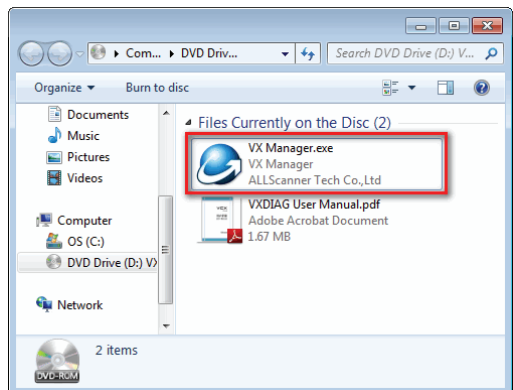
- Processor: Pentium 4 / 1.6GHz+.
- Memory: 2G Bytes or more.
- Hard disk: 40G or more.
- Display: Resolution 1024x768 or higher.
- Network interfaces: LAN 10 / 100M or 802.11b / g.
- Communication Interface: USB2.0 or USB3.0
- Operating System: Windows XP / Vista / Win7 / Win8 / Win8.1.

Software Installation

Before start to diagnose vehicle, you have to install VX Manager and driver which are stored in the CD-ROM, or you can browse <http://www.vxdiag.net> to download the newest setup files.

1

Run VX Manager.exe to setup



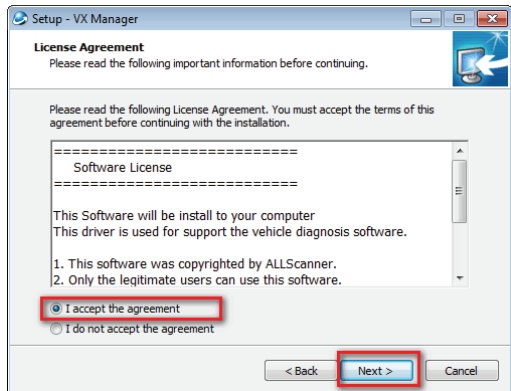
2

Click [Next]



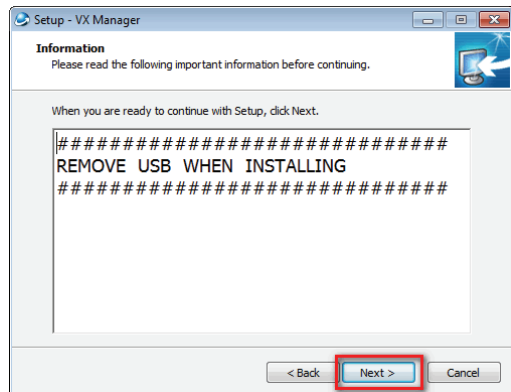
3

Select [I accept the agreement], then click [Next]



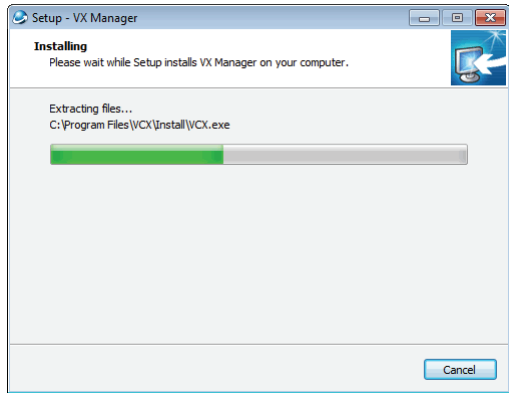
4

During installation, disconnect USB cable to the computer, then click [Next]



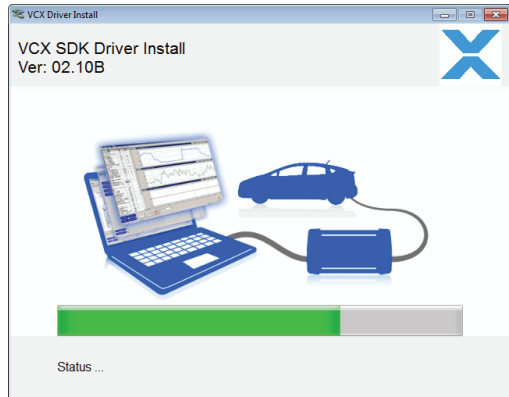
5

Software Installing...



6

VXDIAG SDK Driver installing...



7

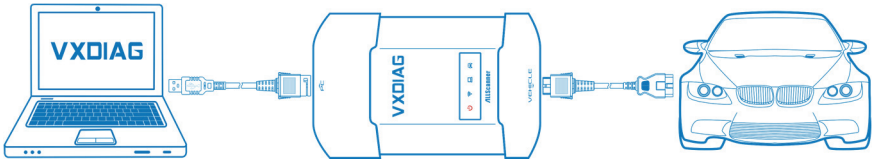
Setup complete. The shortcut will create on the desktop



Start to Use

Hardware Connection

Connect OBDII cable to the vehicle 16pin diagnostic port, and USB cable to the computer.

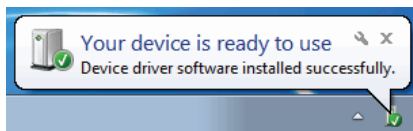


After device boot complete, the power led will flash, and the buzzer will prompt.

Install USB driver for Windows 7 / 8 / 8.1

The first time to connect USB cable to the computer, Windows will prompt [Installing device driver].

Windows automatically complete driver installation.



Install USB Driver for Windows XP

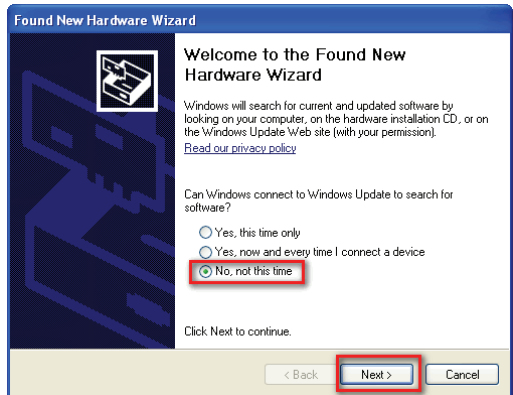
The first time to connect USB cable to the computer, Windows will prompt [Found New Hardware],



Please follow these steps to complete USB driver installation.

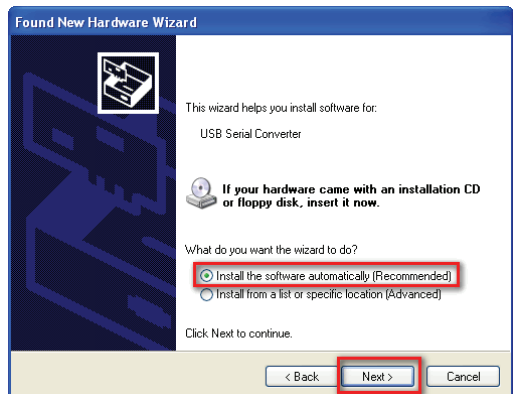
1

Select [No, not this time], then click [Next]



2

Select [Install Driver Automatically], then click [Next]



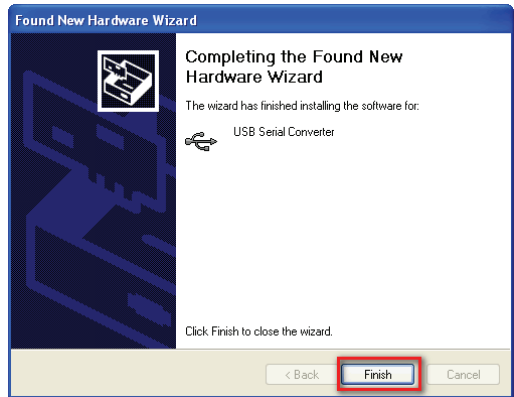
3

Please wait while the wizard installs the software



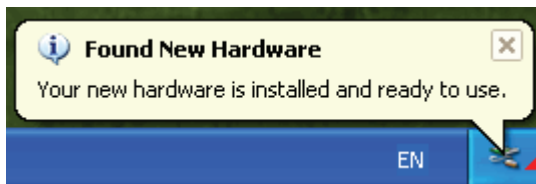
4

Complete Found New Hardware Wizard, click [Finish]



Thereafter, it will pop up the second time [Found New Hardware Wizard], same as above.

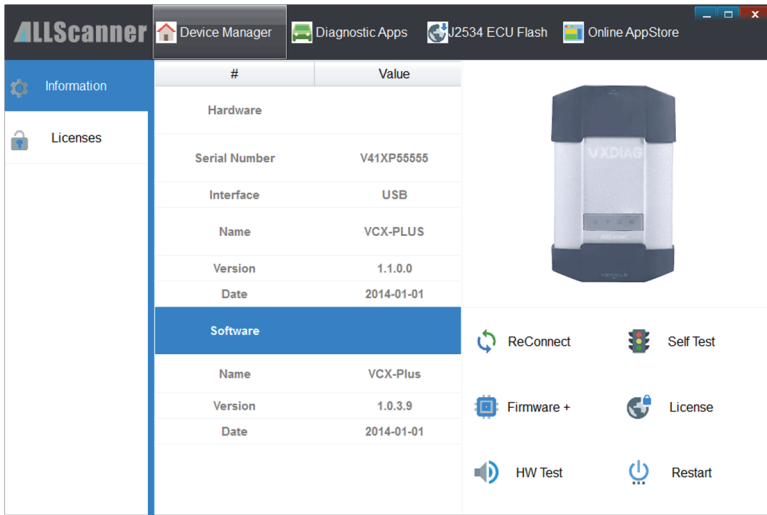
The USB Driver installed completed:




After USB driver is successfully installed, PC LED will flashing.


VX Manager


Please make sure the device is connected. Run VX Manager, The information of device will be displayed in "Device Manager" .




Basic Functions

 **ReConnect** To establish a connection with the device

 **Firmware** Upgrade device firmware from server

 **License** Update device license from server

 **Restart** Reset device and start to run

 **Self Test** Run device test program and report

 **HW Test** Device LED flashing and buzzer beep

Device License

You can check your license status in "Device License" . you want to buy the License, please contact the dealer.

The screenshot shows the ALLScanner interface with the 'Device Manager' tab selected. The 'Licenses' section is active, displaying a table of installed licenses. The table has columns for Name, Activate Date, Expire Date, and Status. All listed licenses are in an 'Available' state.

Name	Activate Date	Expire Date	Status
PASSTHRU	2014-11-17	2020-12-31	Available
PDU	2014-11-17	2020-12-31	Available
TOYOTA	2014-11-17	2020-12-31	Available
HONDA	2014-11-17	2020-12-31	Available
JLR	2014-11-17	2020-12-31	Available
SUBARU	2014-11-17	2020-12-31	Available
PORSCHE	2014-11-17	2020-12-31	Available

Vehicle Diagnosis

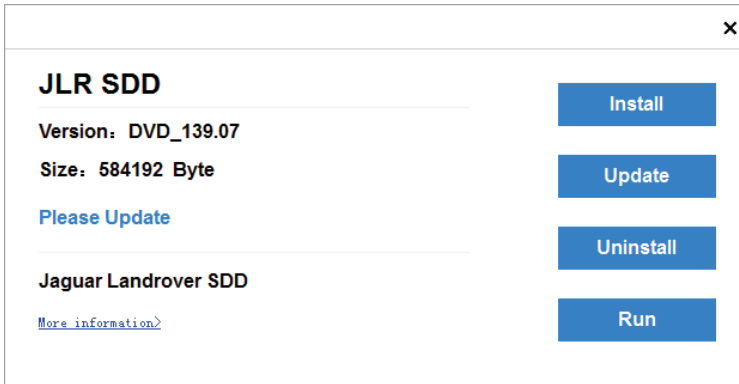
VX Manager can manage multiple original diagnosis functions.

The screenshot shows the ALLScanner interface with the 'Diagnostic Apps' tab selected. The 'My Apps' section is active, displaying a grid of application categories. The categories are organized into two main groups: Automotive and Heavy Duty.

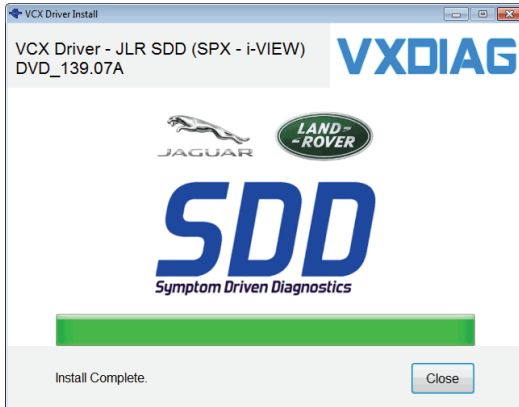
Category	Application
Automotive	PASSTHRU
	Toyota TIS
	HONDA HDS
	JLR SDD
Heavy Duty	Subaru SSM

To use the original factory diagnosis functions, you will need to install corresponding vehicle diagnosis driver.

Click an application in vehicle diagnosis window, and you will get a driver installation window.



[Install] VX Manager will download the newest diagnostic driver from server and install, then you can start to use the original diagnosis function. The installation UI is below:



[Update] Update installed diagnostic driver from server.

[Uninst] Uninstall the diagnostic driver.

[Run] Run the original diagnostic application.

Warranty Terms

One Year Warranty

1. The warranty is valid from the date of dispatch until the end of 1 year. If the invoice is lost, the warranty is valid from the date of manufacture.
2. Warranty covers repairs or replacement of item in the event that the damages are caused by design or material defect or fault of production during the warranty period. The invoice must be presented in order to make this claim.
3. During the warranty period, we will cover the cost of postage for product repairs; after the warranty period, you will be responsible the delivery cost.
4. The warranty offered is strictly for the purchased item only. We will not be held liable for any defects or damage on any other item(s) used in conjunction with this product.
5. The laptop that comes with the product is not built by us. The manufacturer of the laptop is responsible for its after-sale service.
6. We also cover damages excluded in the quality assurance. If accessory replacement is necessary, we will let you know in advance. You will be responsible for the material cost and delivery cost.

General Exclusions (What's NOT Covered):

1. Faults caused by fire, dust, sand, water contamination or ingress, fall or shock, chemical corrosion, blown fuse, theft, dirt, dampness or corrosion, leaky batteries, incorrect use of power supply or other adverse weather conditions.

2. Damages caused by repair or tuning or improper installation or repairs by unauthorized personnel.
3. Damages caused by illegal operation such as reading or changing product programs.
4. Products whose mechanical serial number or electronic serial number has been deleted, changed or damaged.
5. Malfunction caused due to exposure to excessive heat or extreme cold.
6. Wear or damages of qualified parts through natural use.

Service and Support

Technique Support

You can browse the product Wiki from <http://www.vxdiag.net> ,

There was some useful documents and resources:

- VXDIAG Software installation and usage.
- Multiple OE Diagnostic software installation and usage.
- Multiple OE Diagnostic help tutorials and videos.

Repair Service

If your product need repair, Please download and fill out the repair form, Be sure to include the following information :

- Contact name
- Phone number
- Product Serial Number
- Fault description
- Fix Card
- Delivery Address

Other problems can contact us:

Address 103, A Building, Shenzhen Academy of Aerospace
Technolgy, 10 South Road, High-tech Zone, Nanshan
Dist, Shenzhen, P.R.China

Telephone +86-0755-33000960

Post 518057

Sales info@allscanner.com

Support support@allscanner.com
