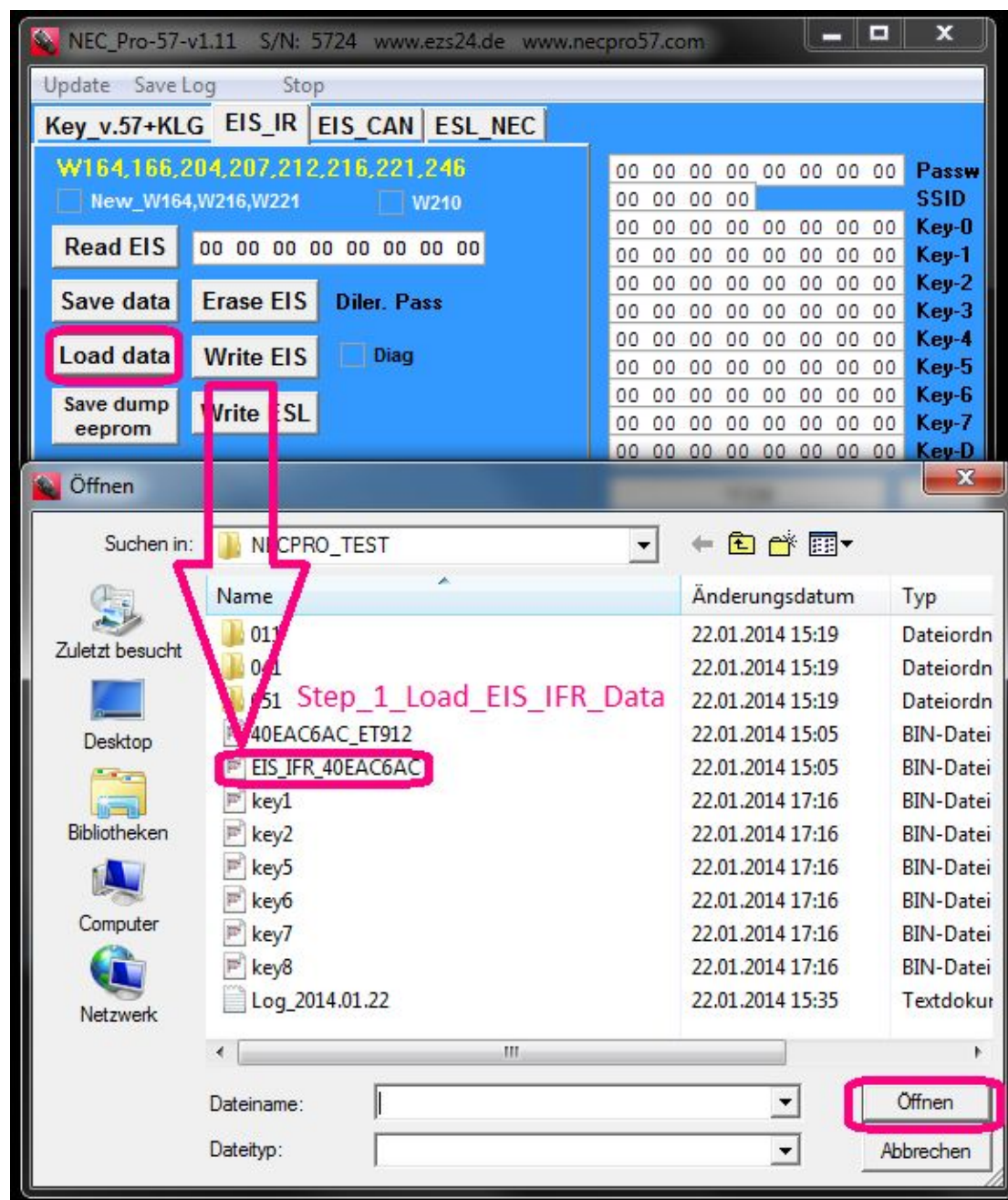


## Original Mercedes Benz NEC PRO57 User Manual

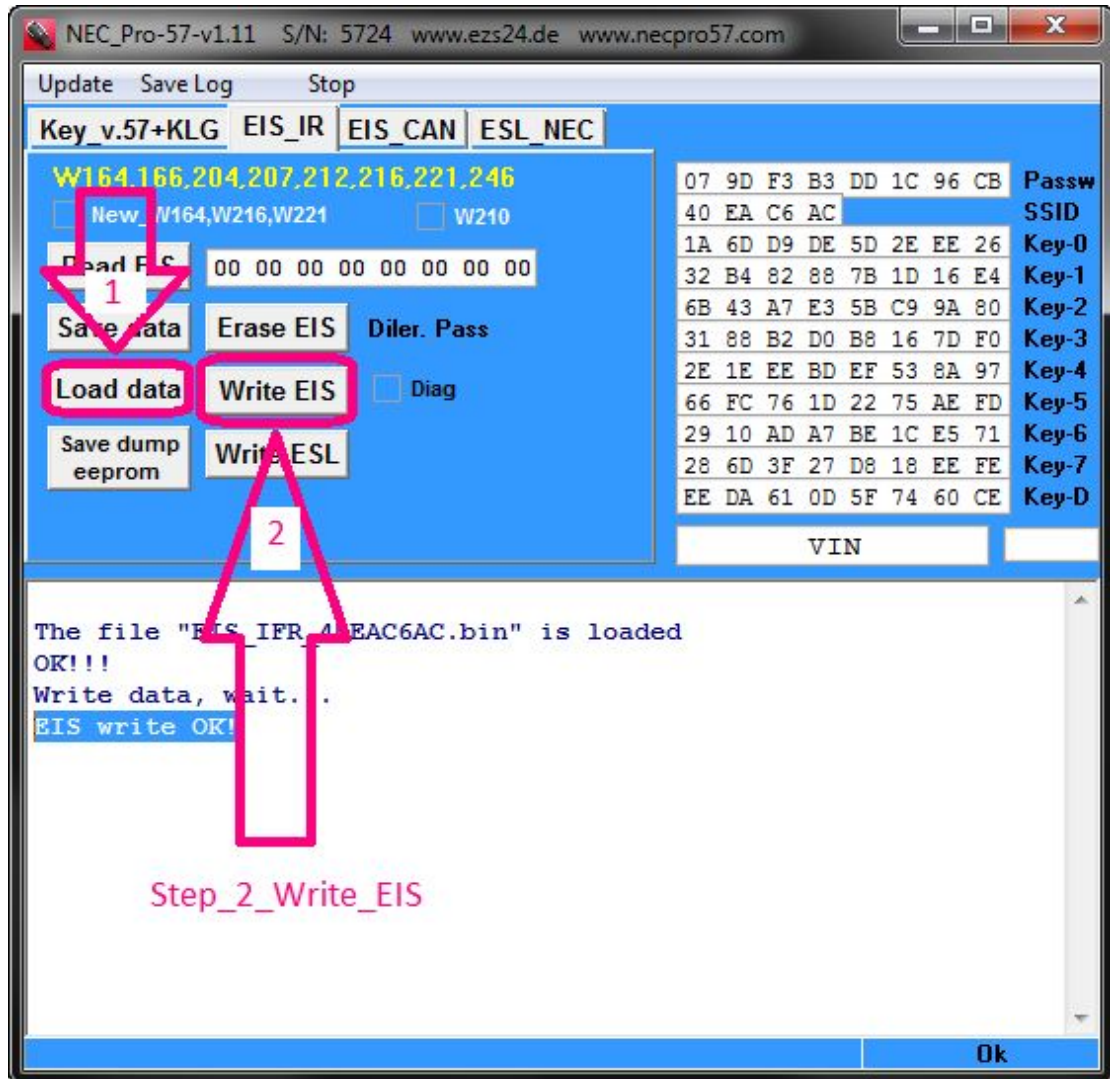
### Function 1: EIS Programming

Please learn the following steps to perform the EIS Programming

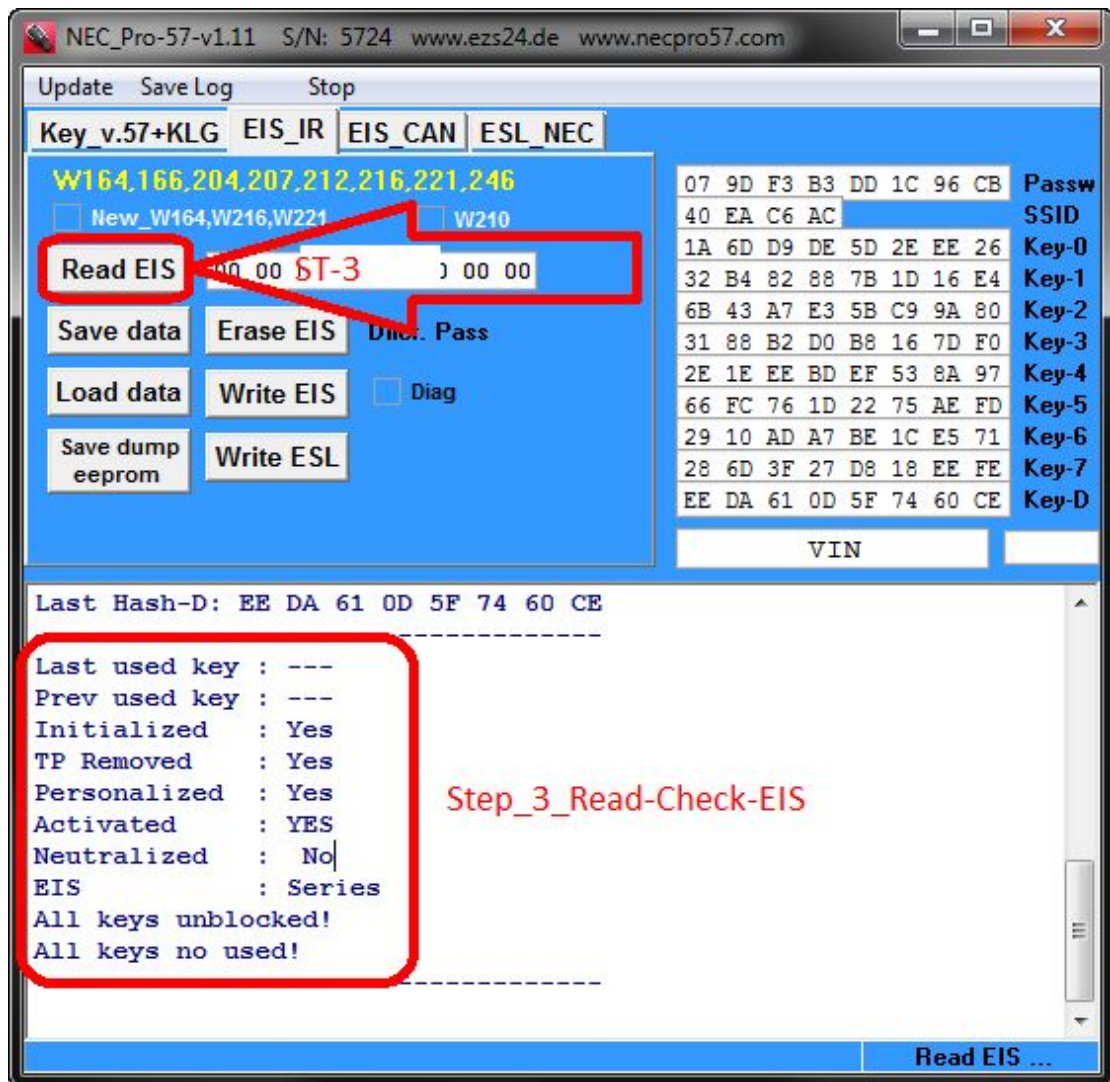
#### Step1.1 Load EIS IFR Data



#### Step 1.2. Write EIS



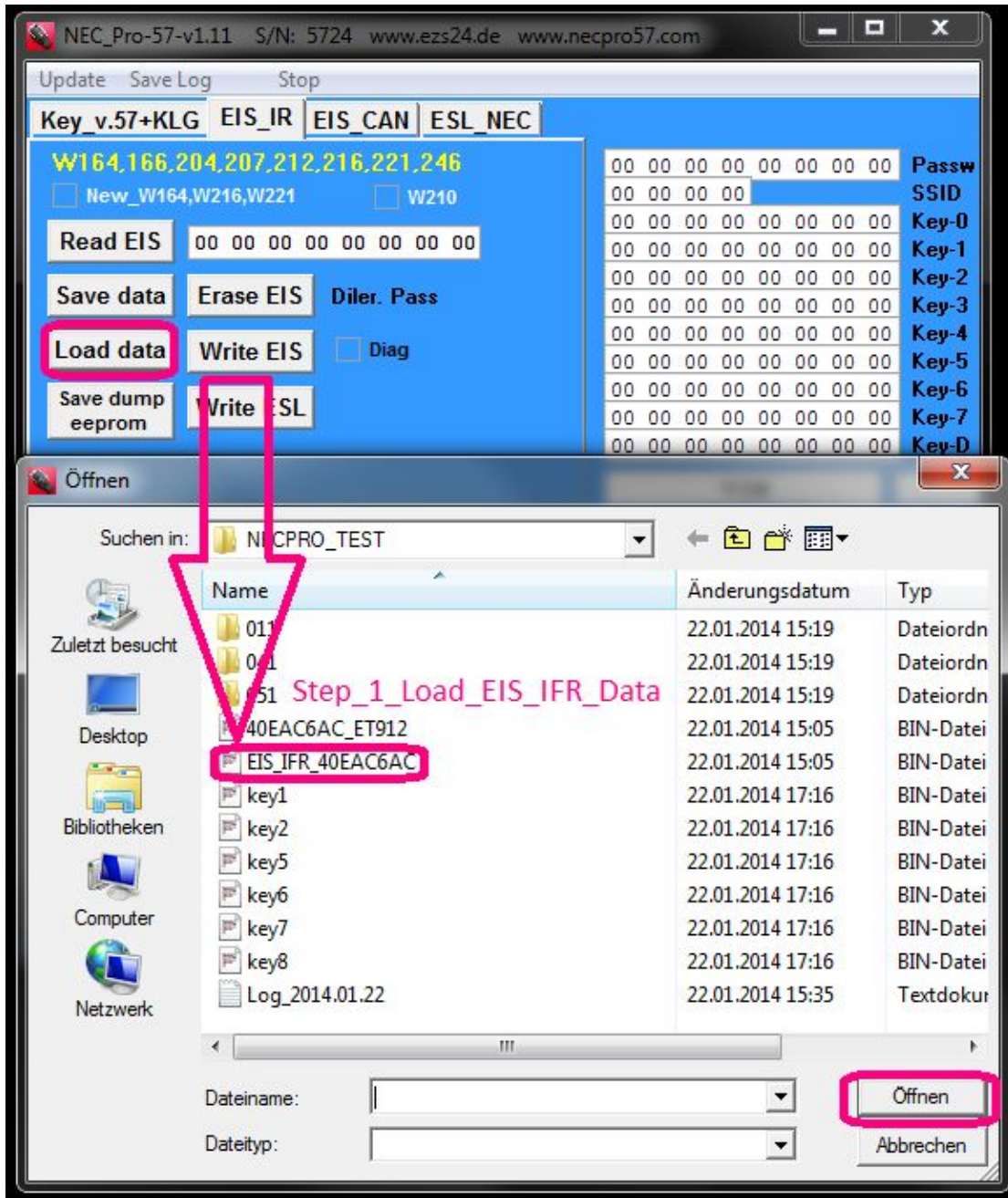
Step 1.3. Read Check EIS



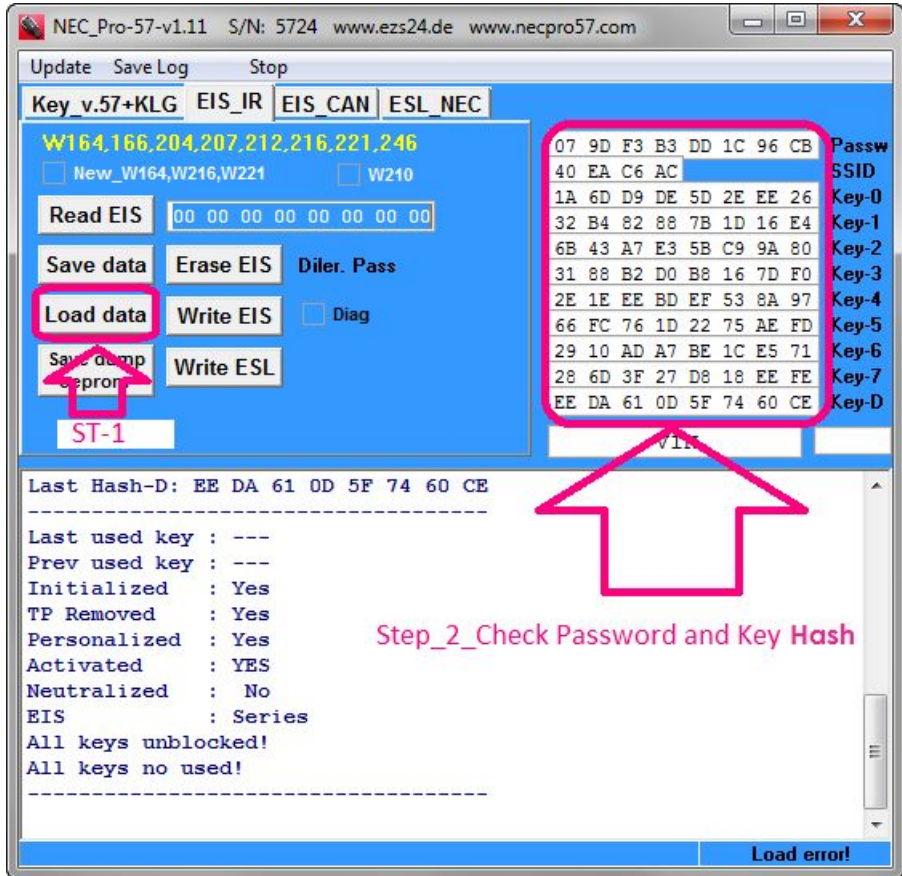
## Function 2. ESL Programming

Please learn the following steps to perform the ESL Programming

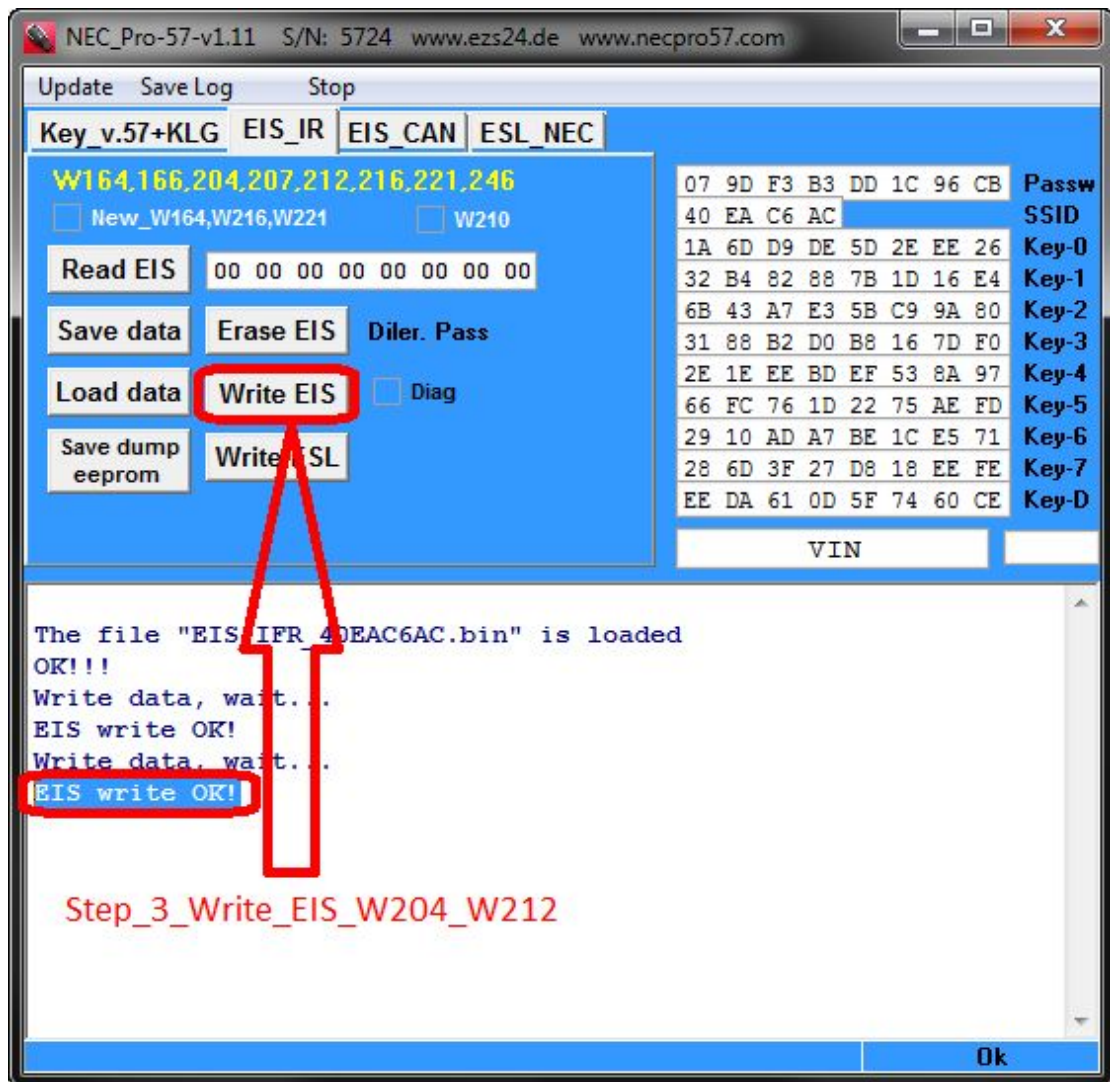
### Step 2.1. Load EIS IFR DATA



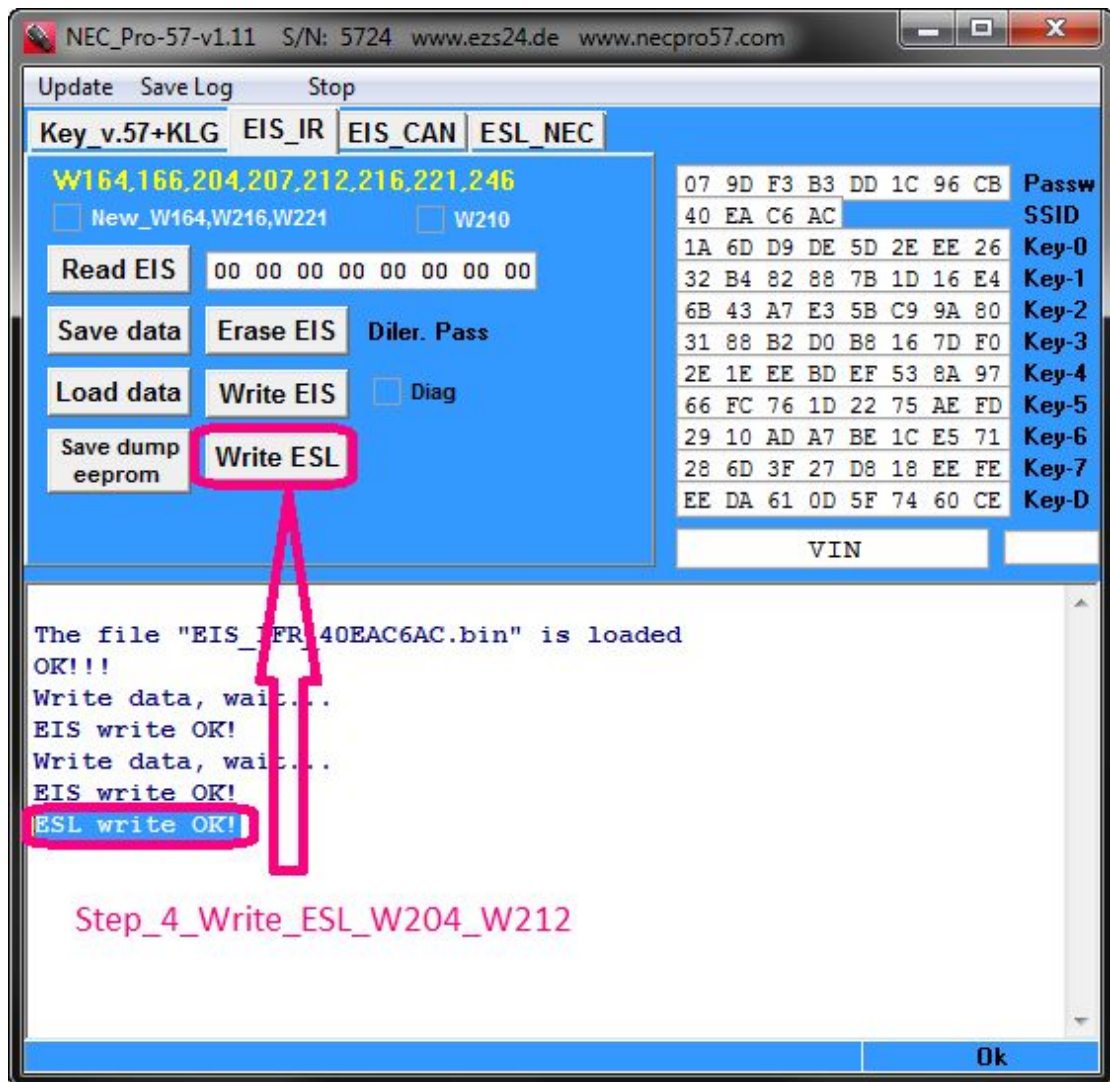
Step 2.2. Check Password and Key Hash



Step 2.3. Write EIS W204, W212



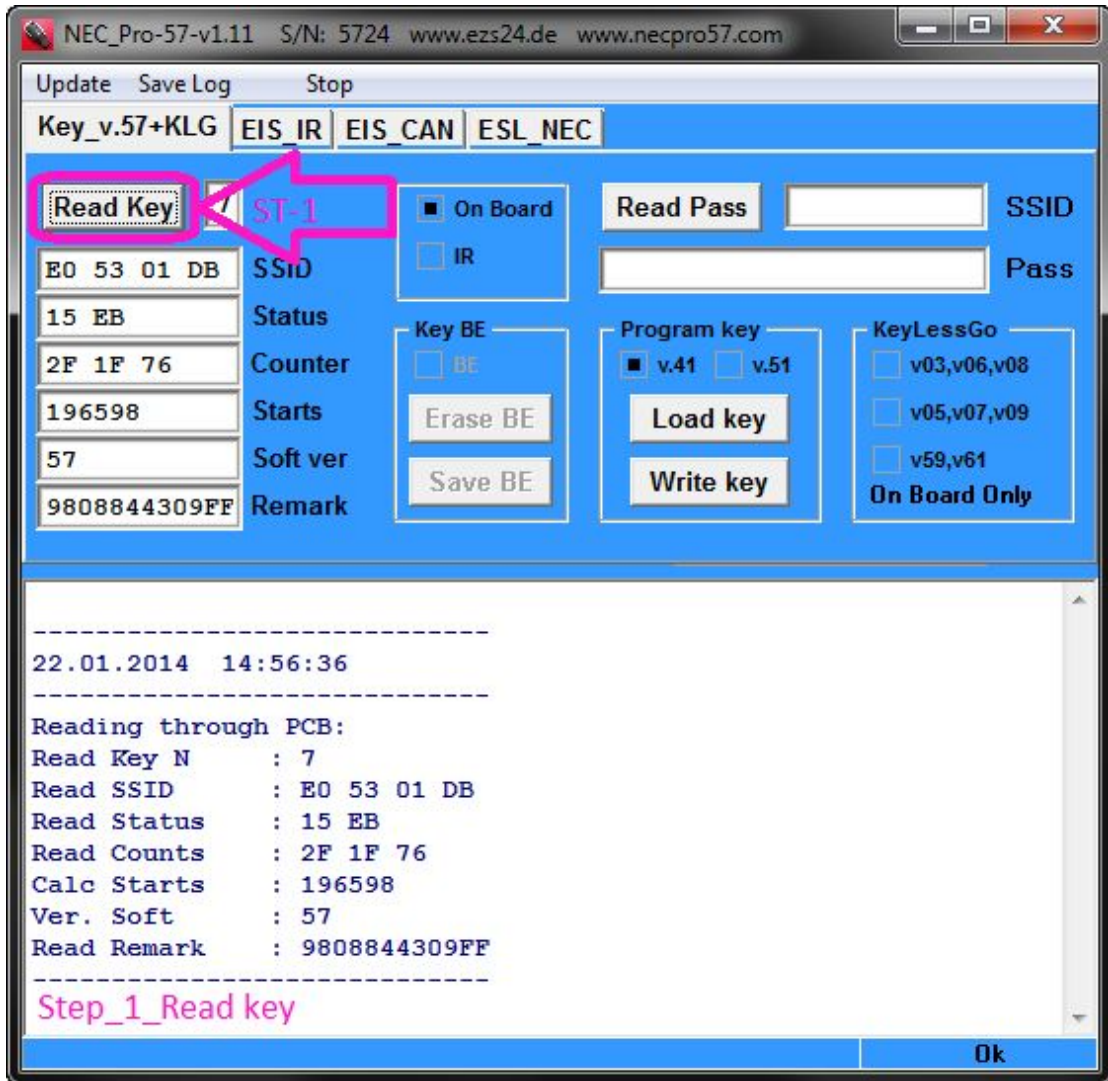
Step 2.4. Write ESL W204, W212



### Function 3. V.1.incl.ESL Adapter

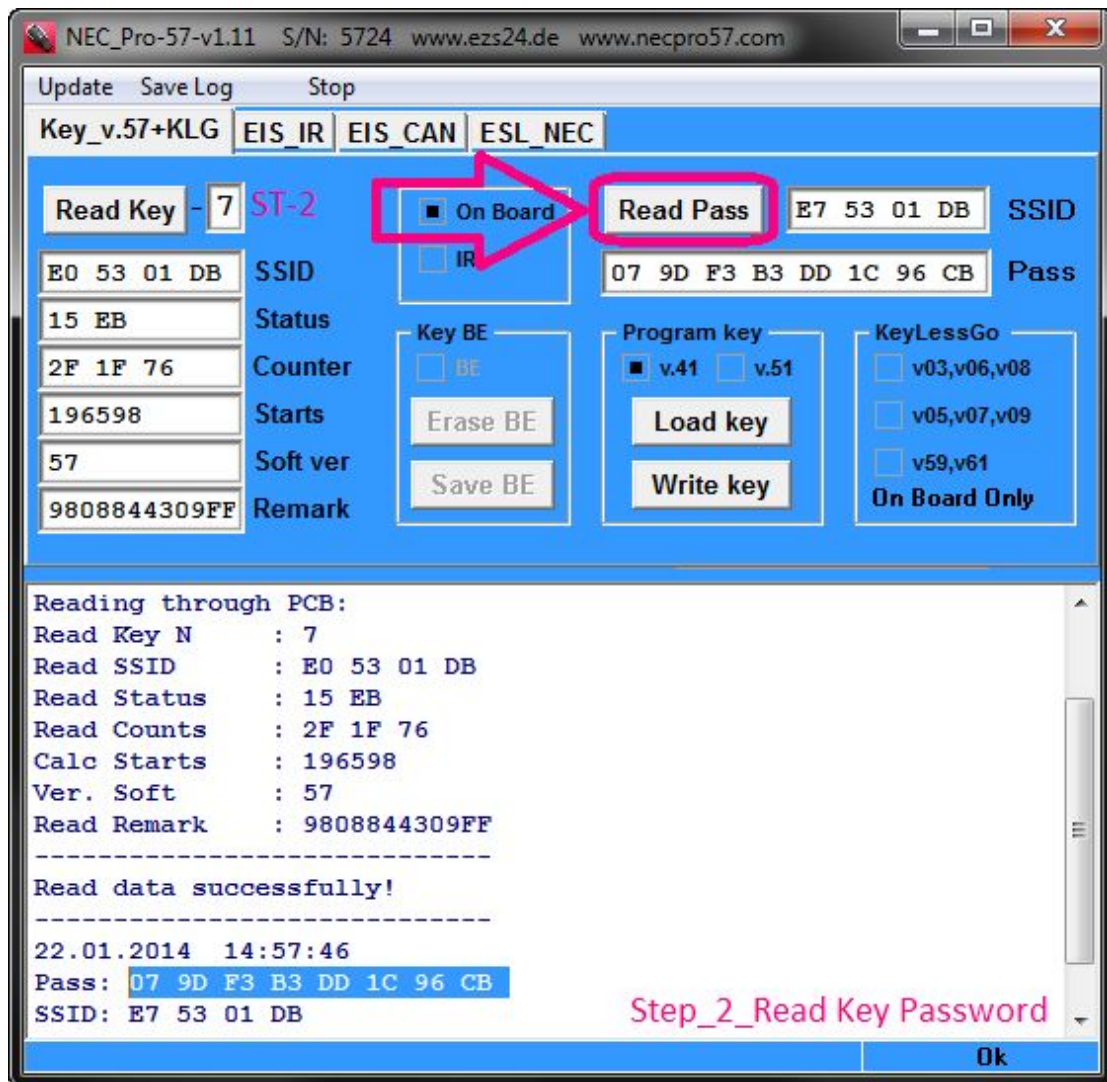
Please learn the following steps to perform the ESL V.1. Writing

#### Step 3.1. Read Key

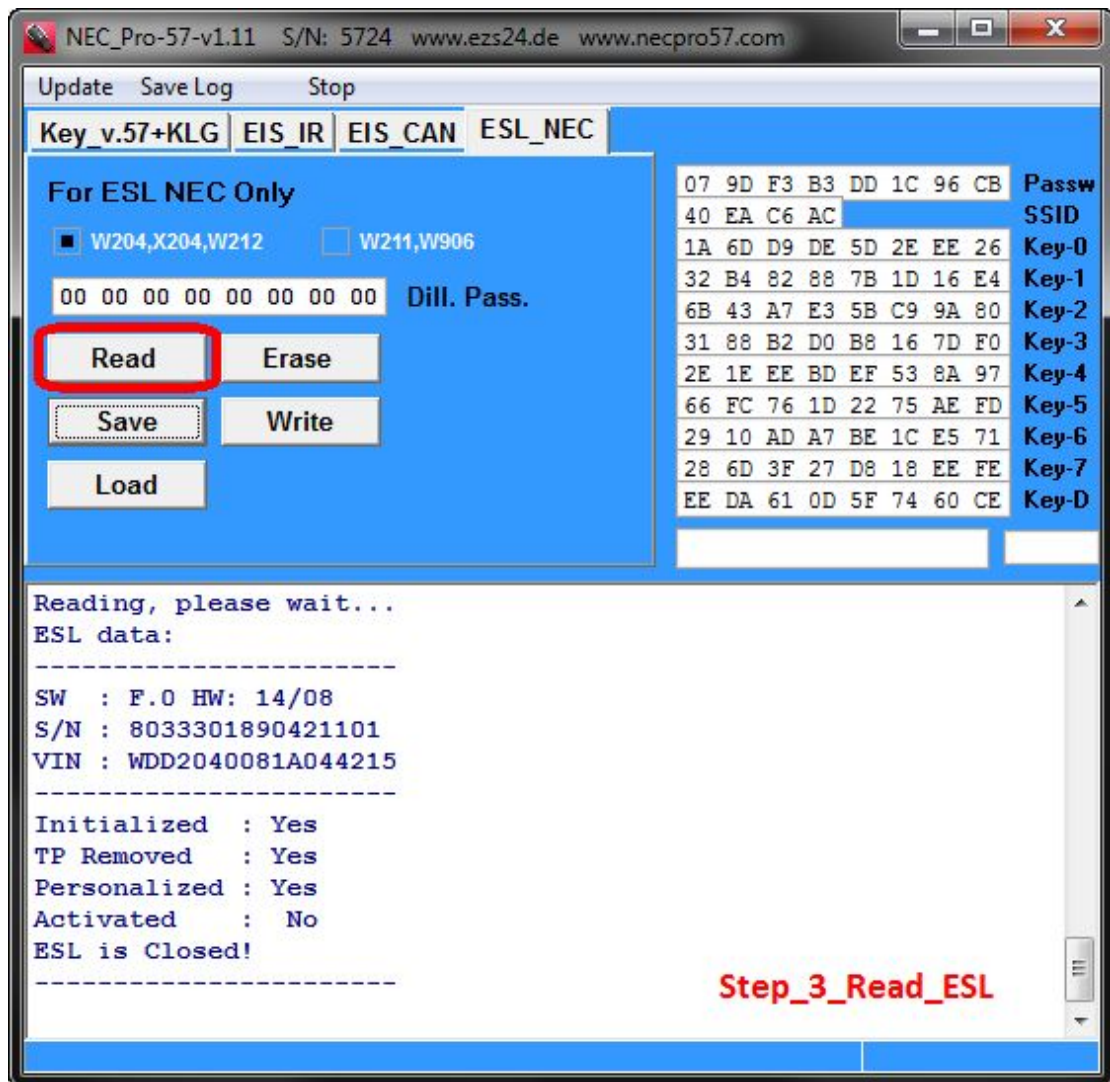


Step 3.2. Read Key Password

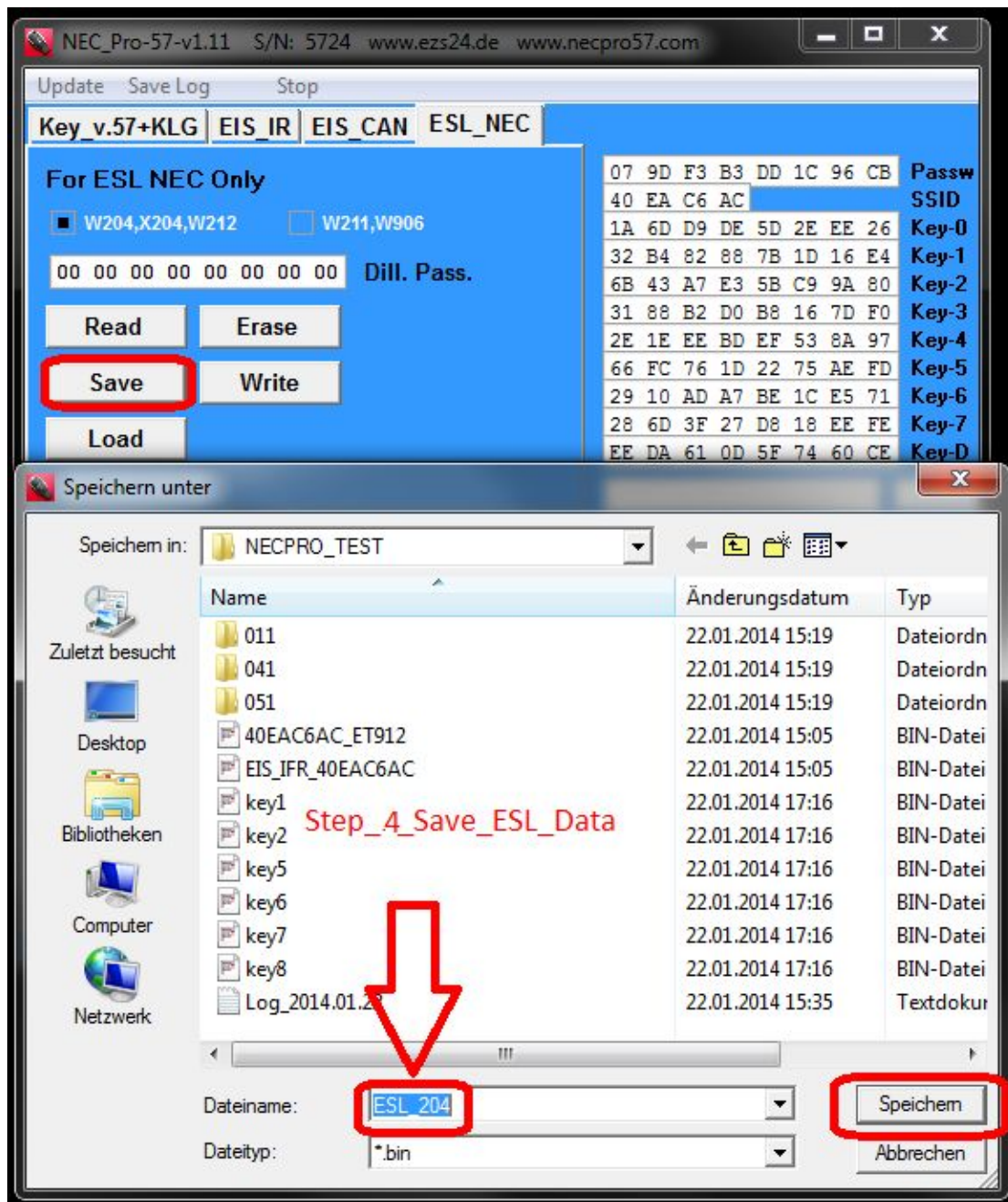




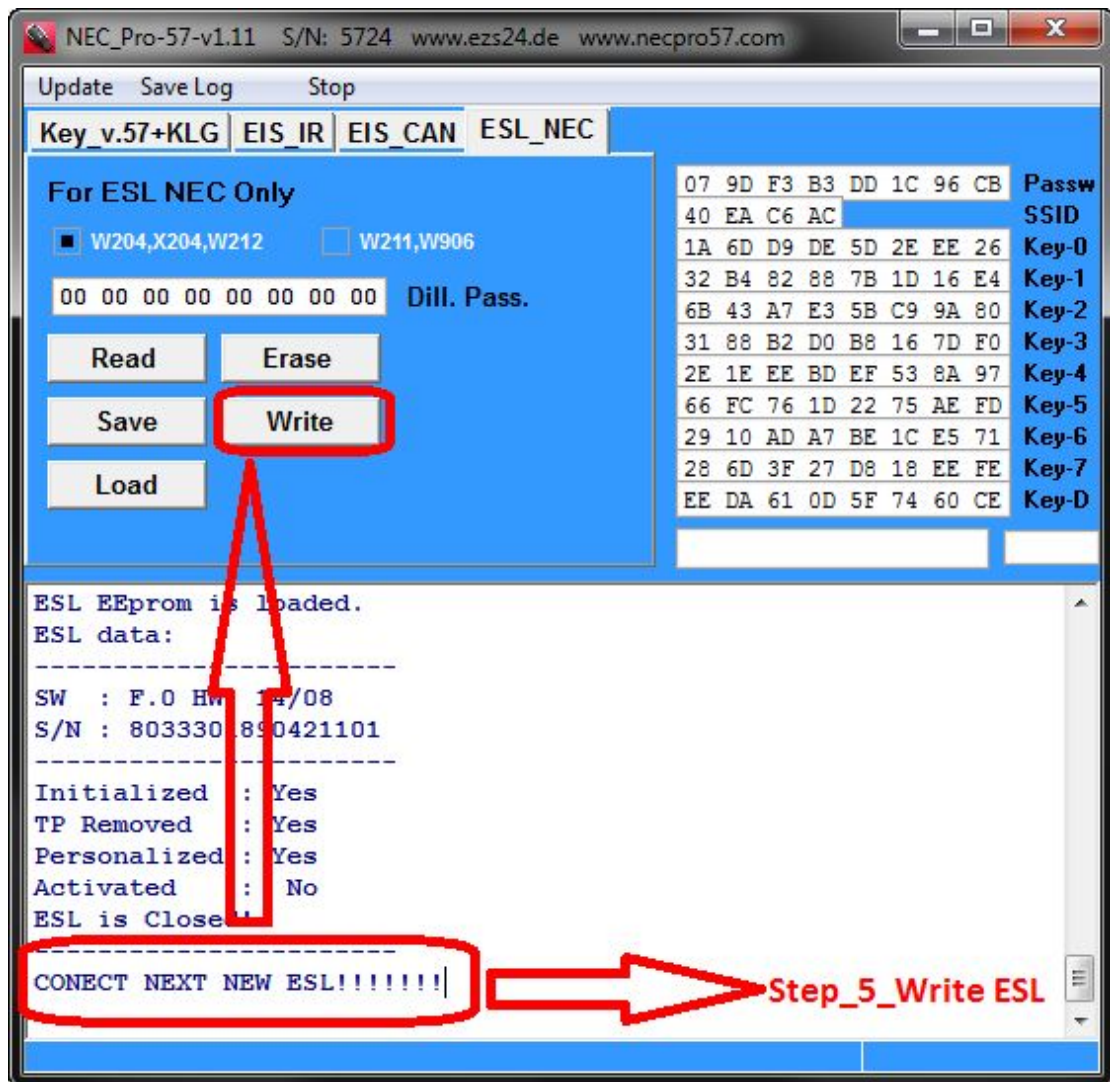
Step 3.3. Read ESL



Step 3.4. Save ESL DATA



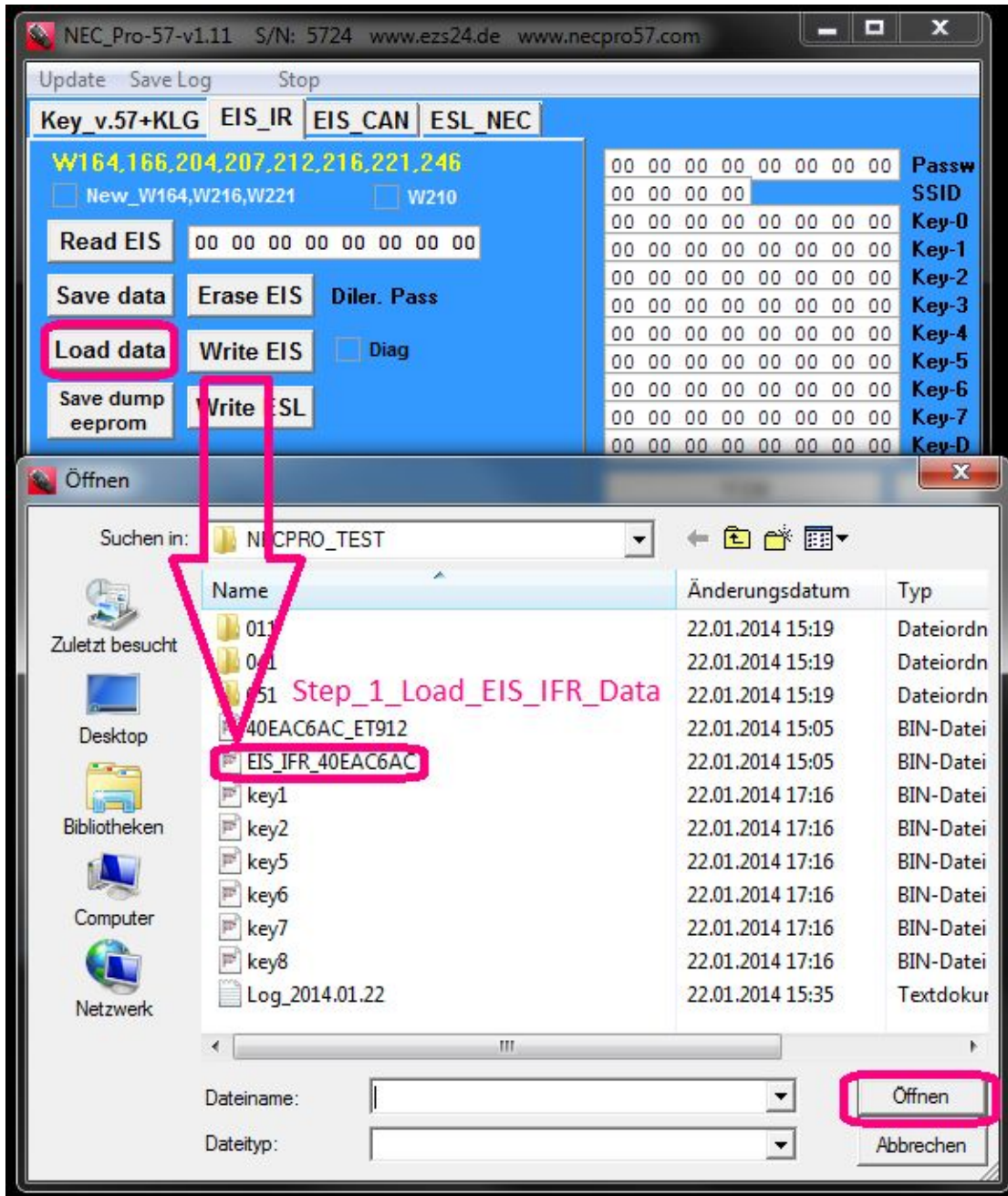
Step 3.5. Write ESL



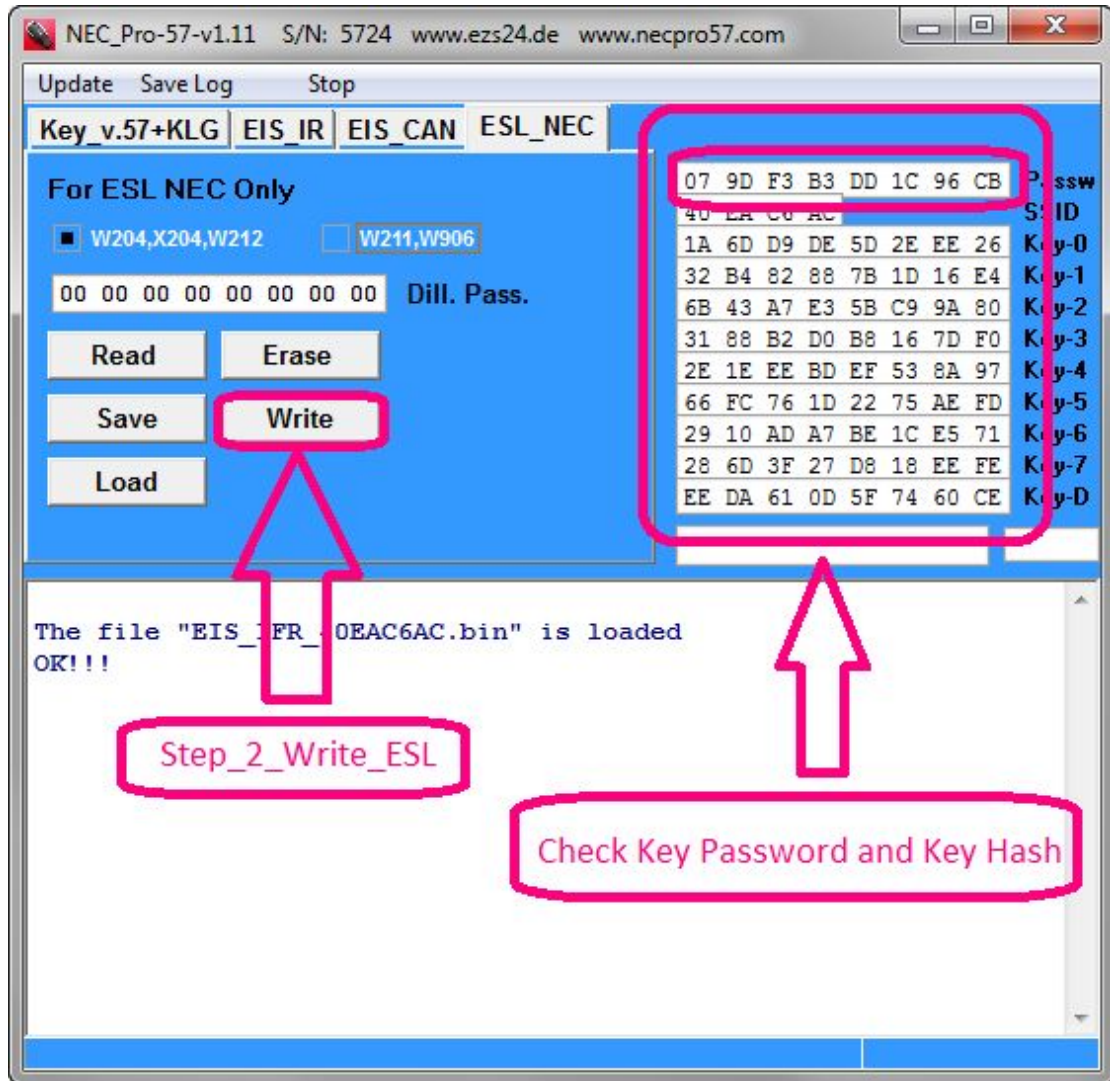
#### Function4. V2.incl.ESL Adapter

Please learn the following steps to perform the ESL V.2. Writing

**Step 4.1.** Load EIS IFR DATA



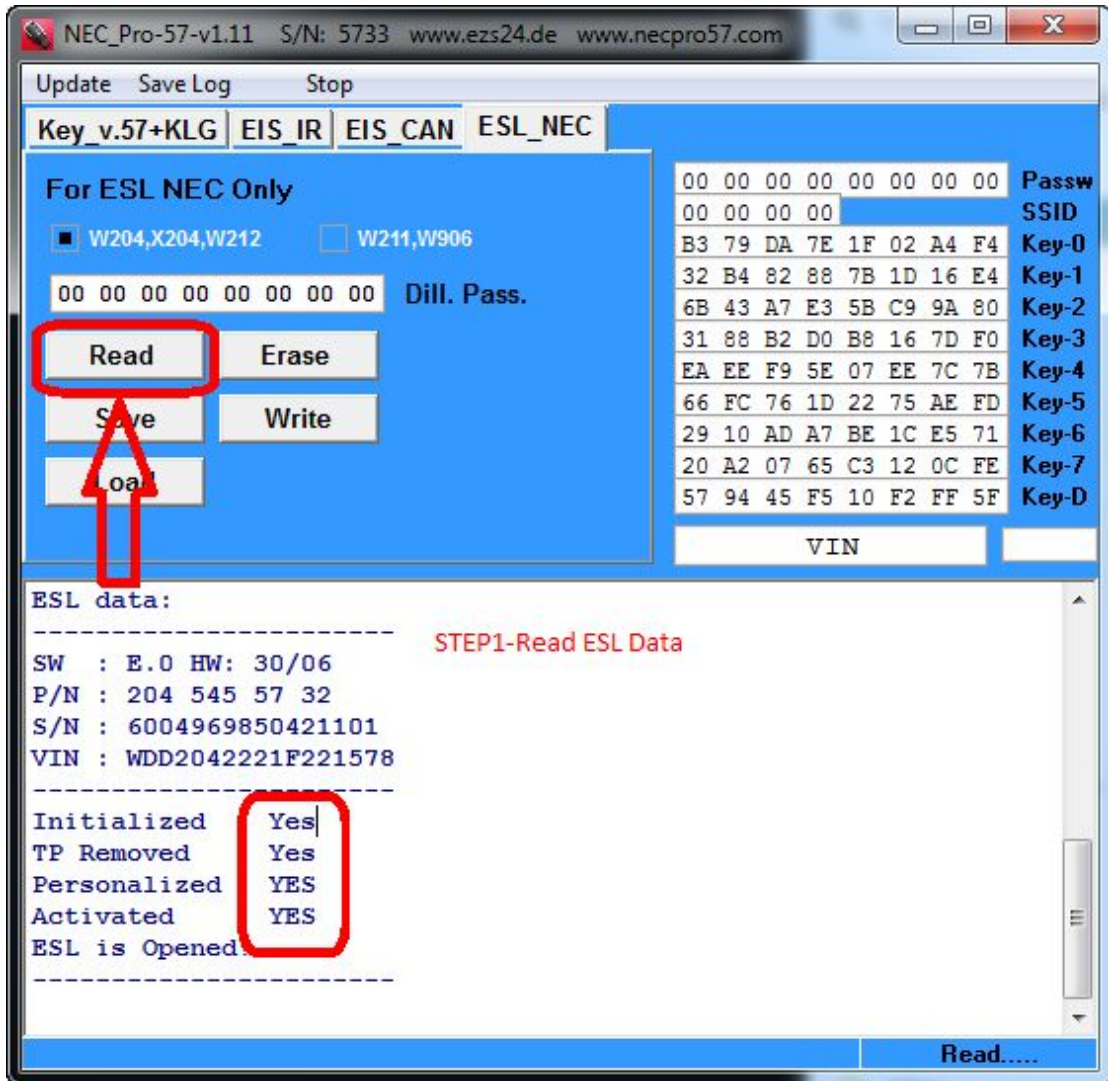
Step 4.2. Write ESL



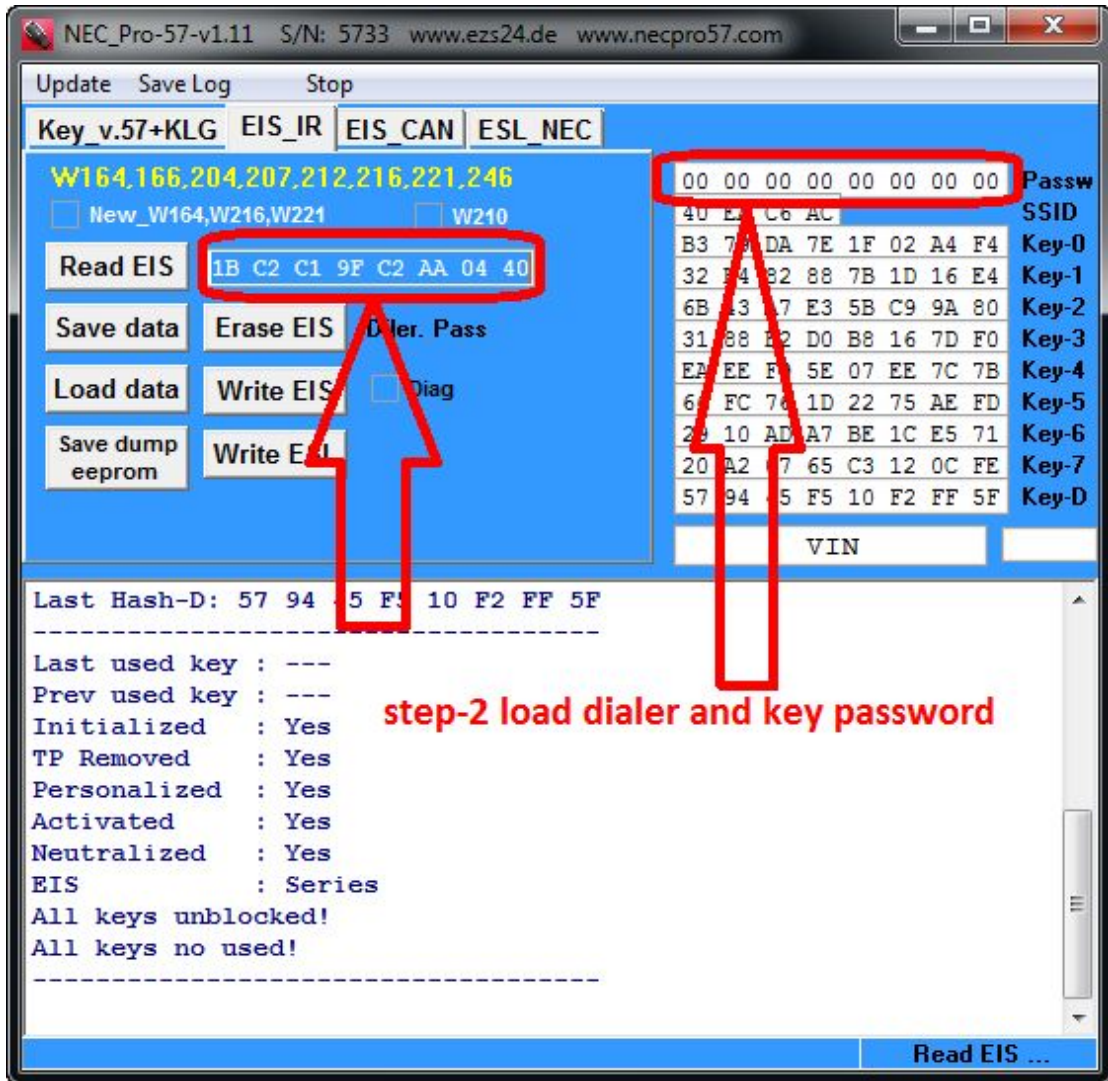
### Function 5. ESL W204-W212 RENEW

Please learn the following steps to perform the ESL W204-W212 RENEW

#### Step 5.1. Read ESL DATA

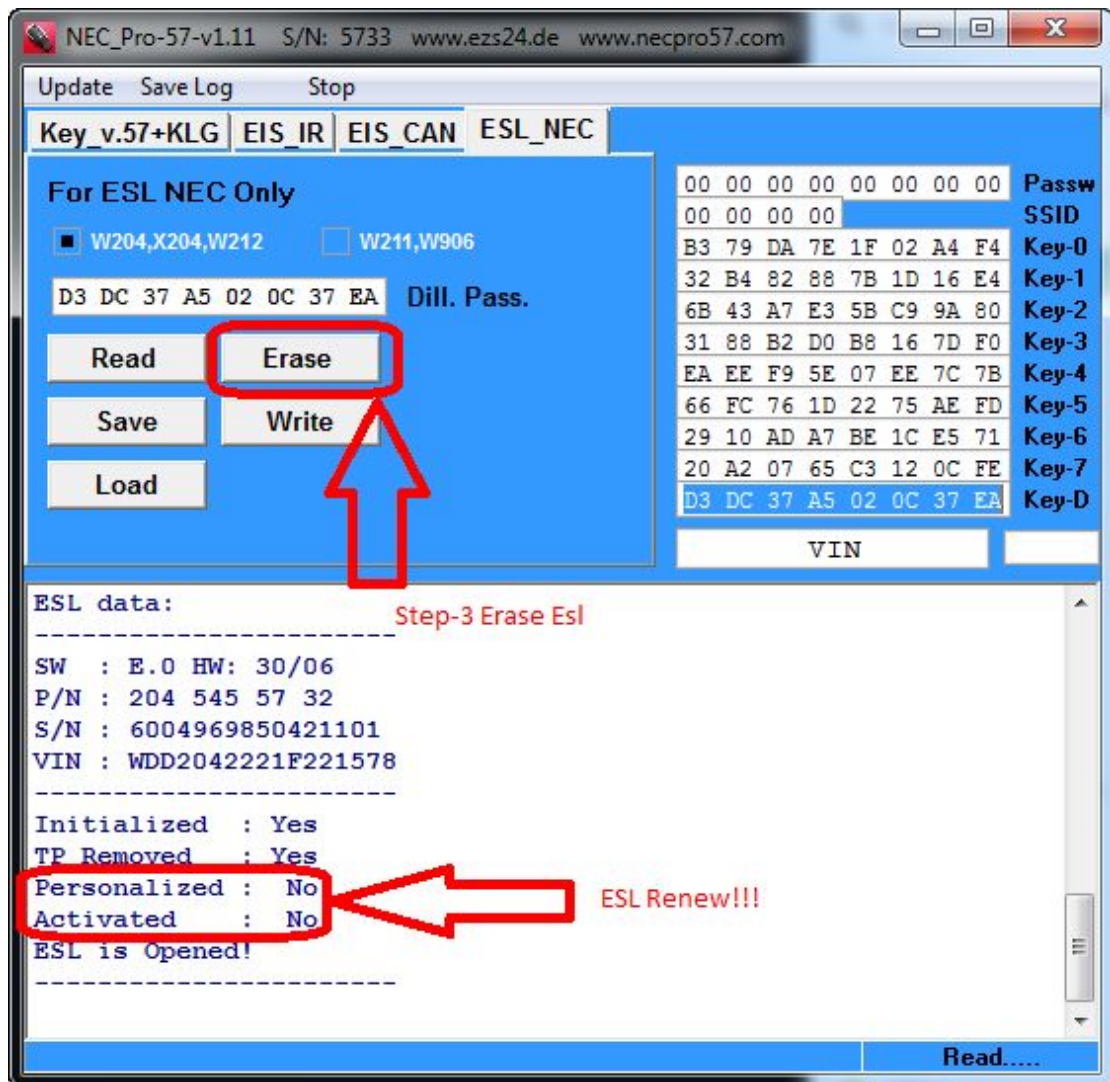


Step 5.2. Load Dialer and Key Password



Step 5.3. ESL W204-W212 ERASE

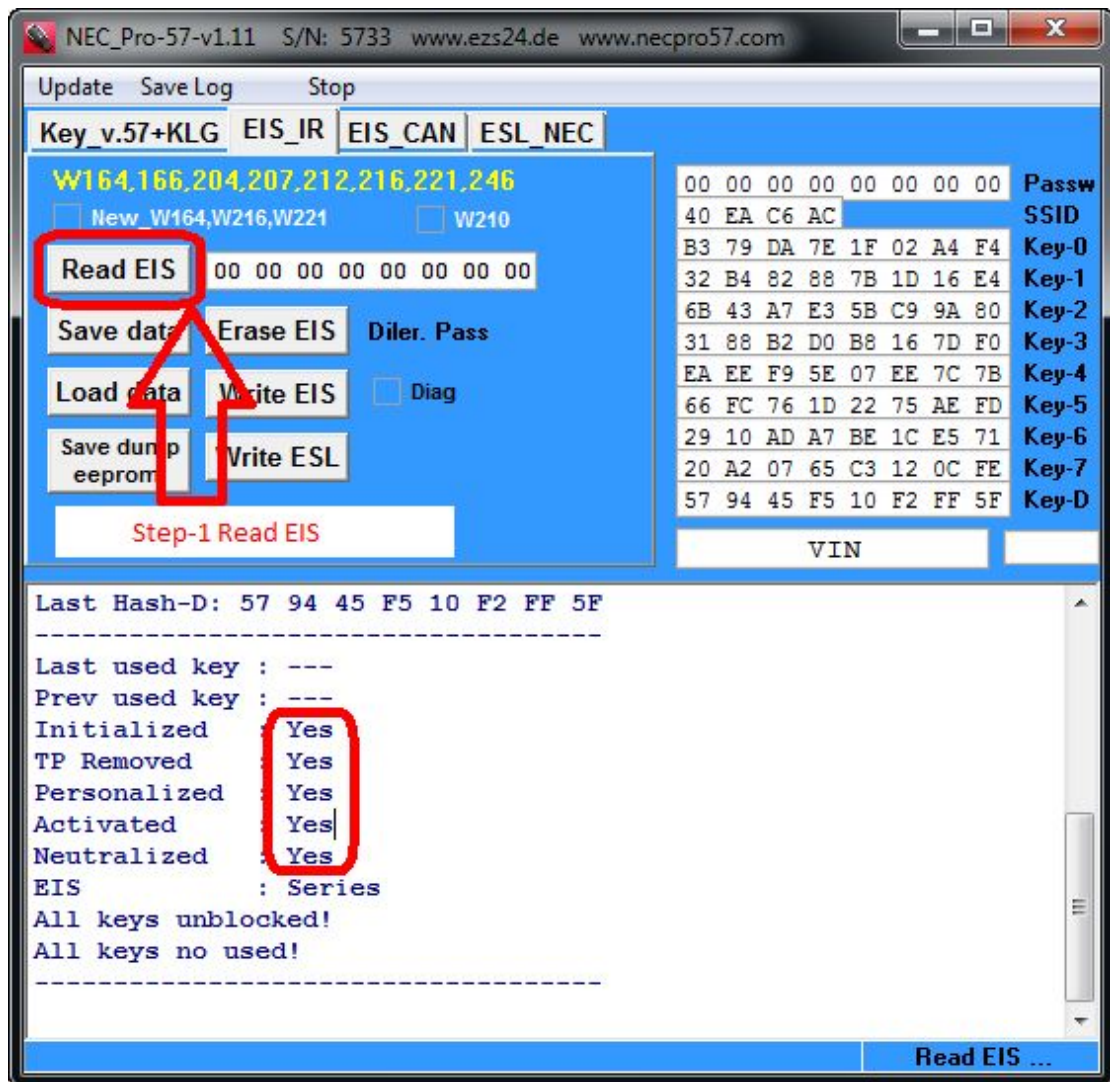




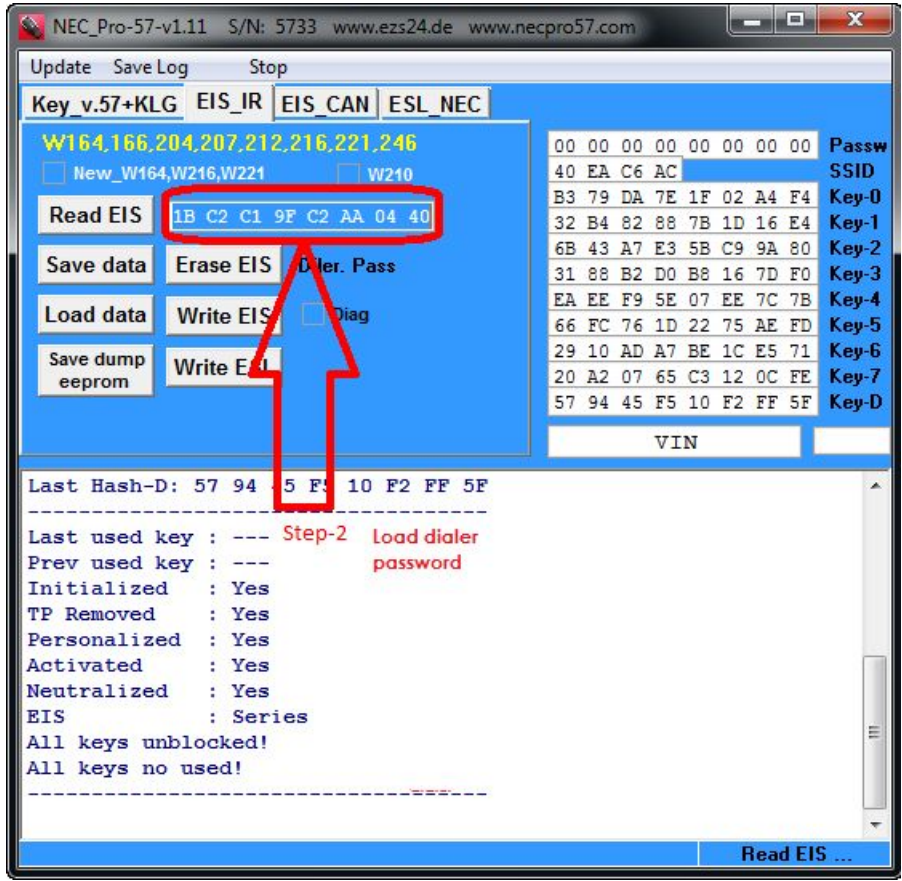
### Function 6. Renew EIS incl. NEC IC

Please learn the following steps to perform the Renew EIS incl. NEC IC

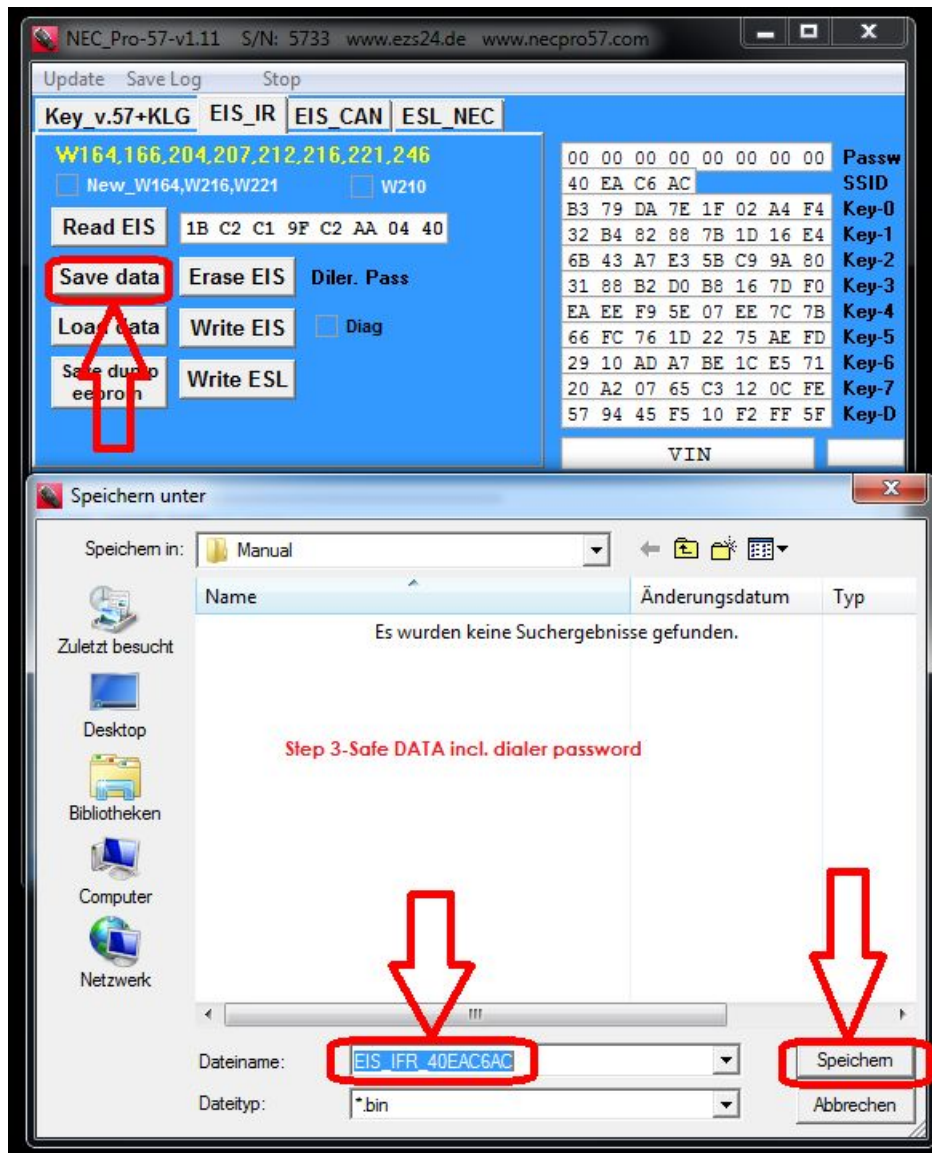
#### Step 6.1. Read EIS



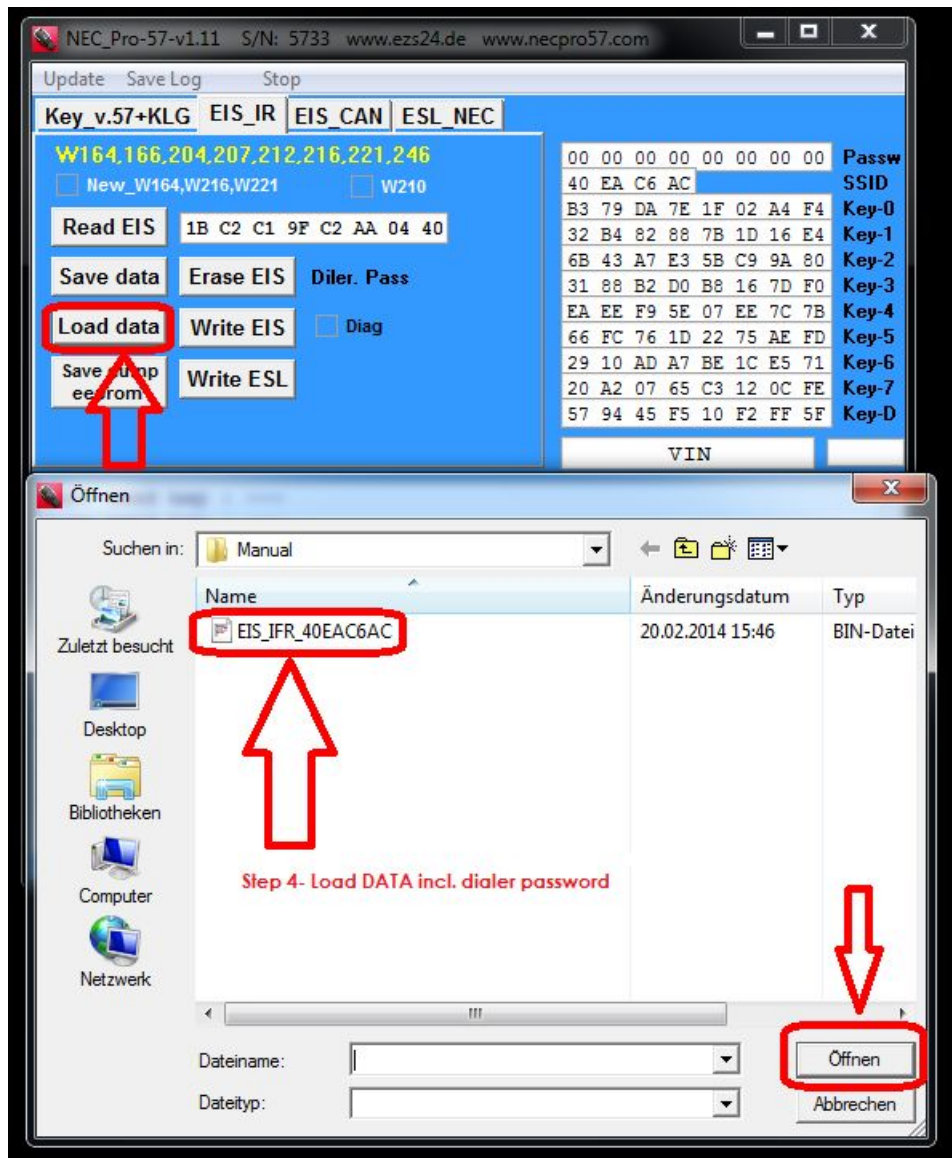
Step 6.2. Load dialer password



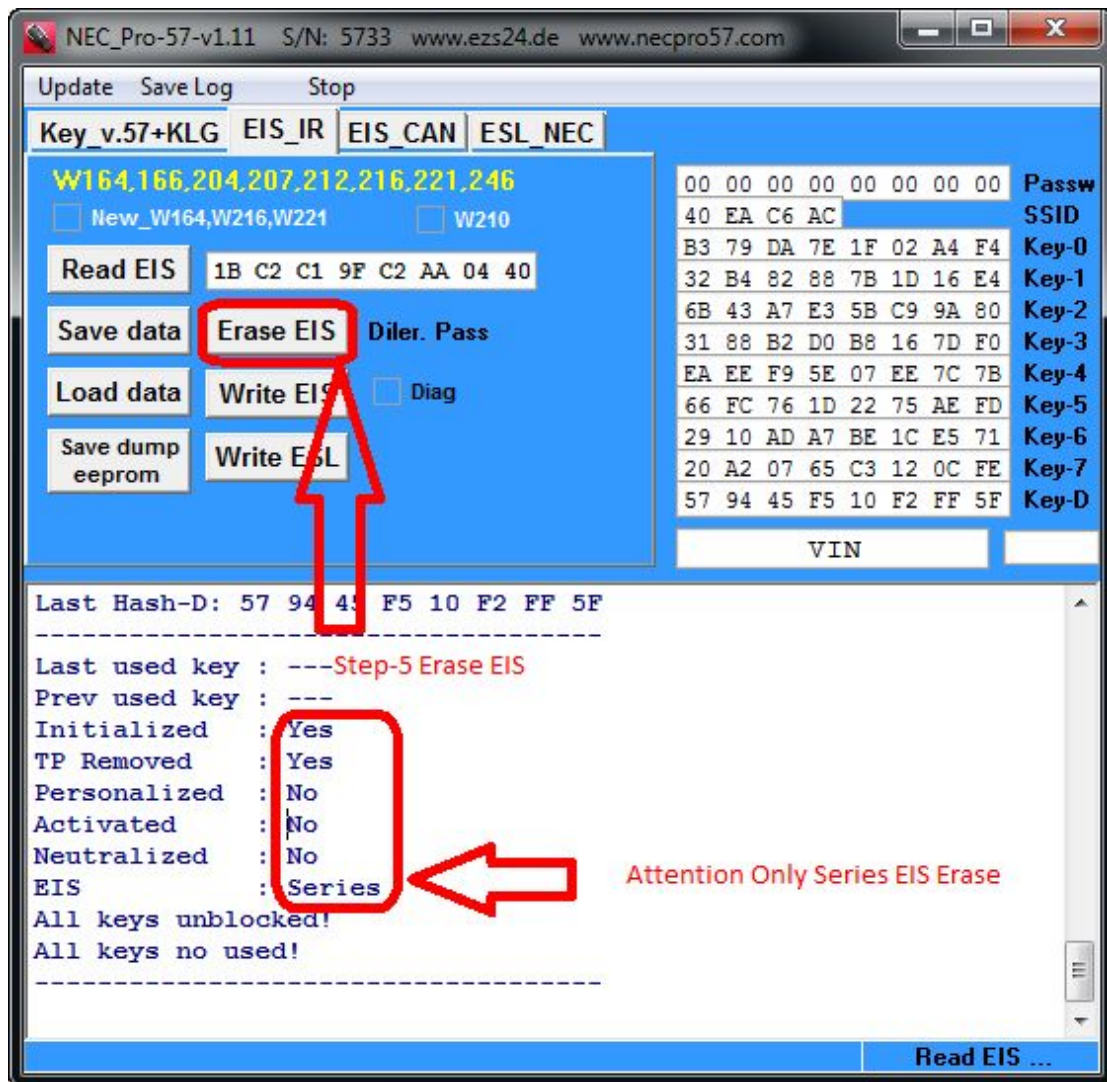
Step 6.3. Safe DATA incl. Dialer Password



Step 6.4. Load DATA incl. dialer password



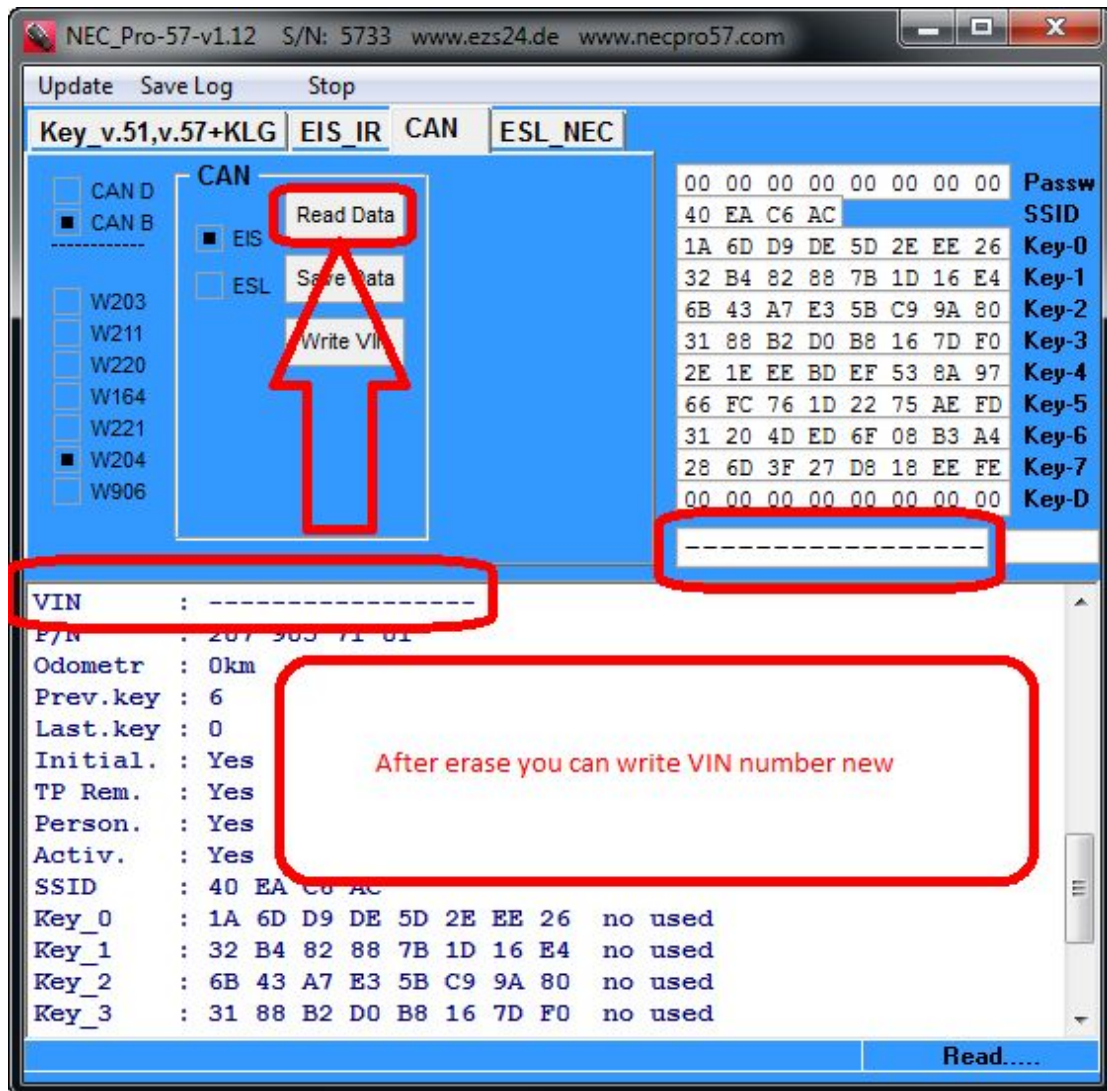
### Step 6.5. Erase EIS



### Function 7. Read DATA incl. CAN Adapter

Please learn the following steps to perform the Read DATA incl. CAN Adapter

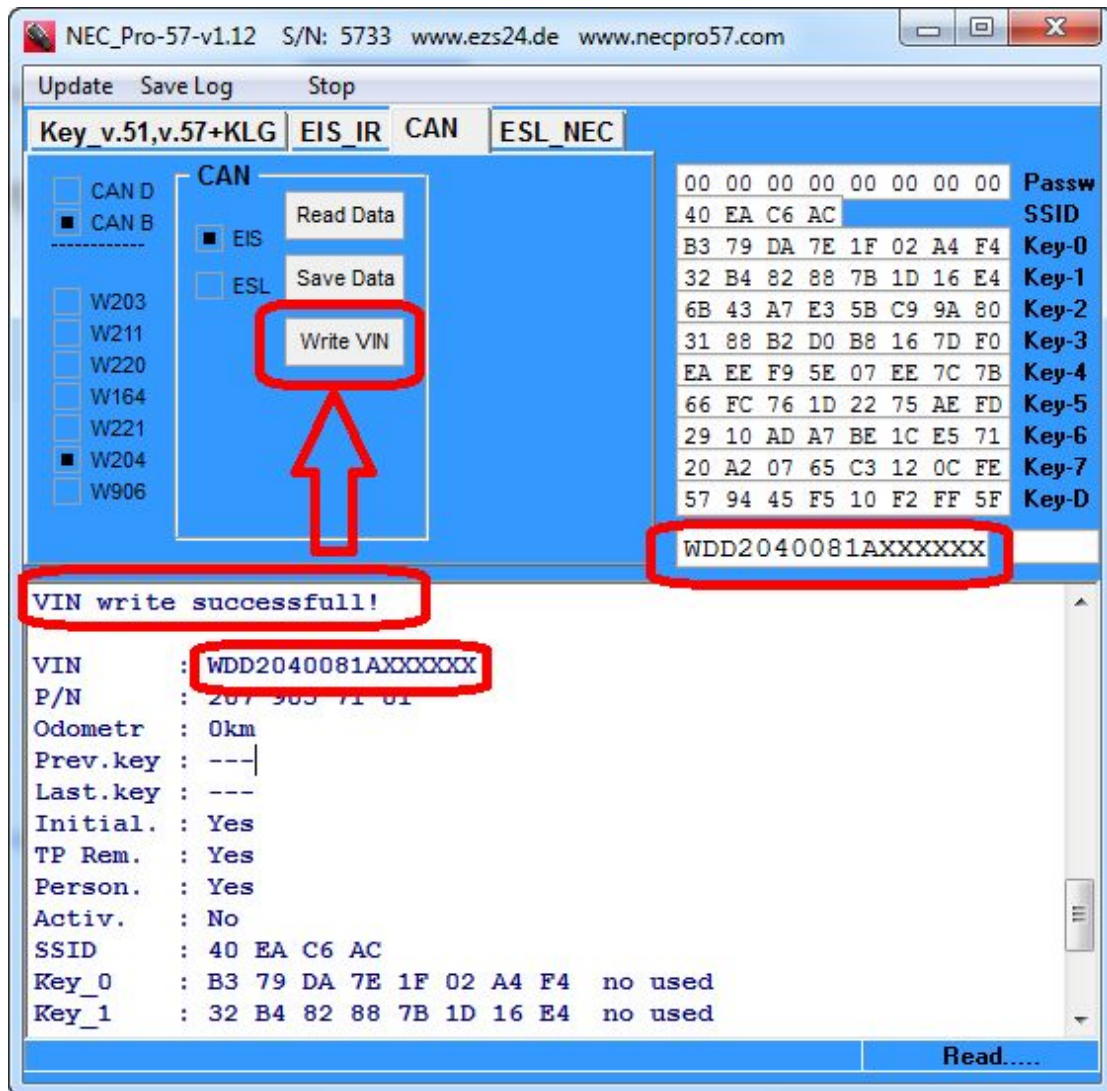
#### Step 7.1 Read DATA incl. CAN Adapter



### Function 8. VIN write new

Please learn the following steps to perform the VIN write new

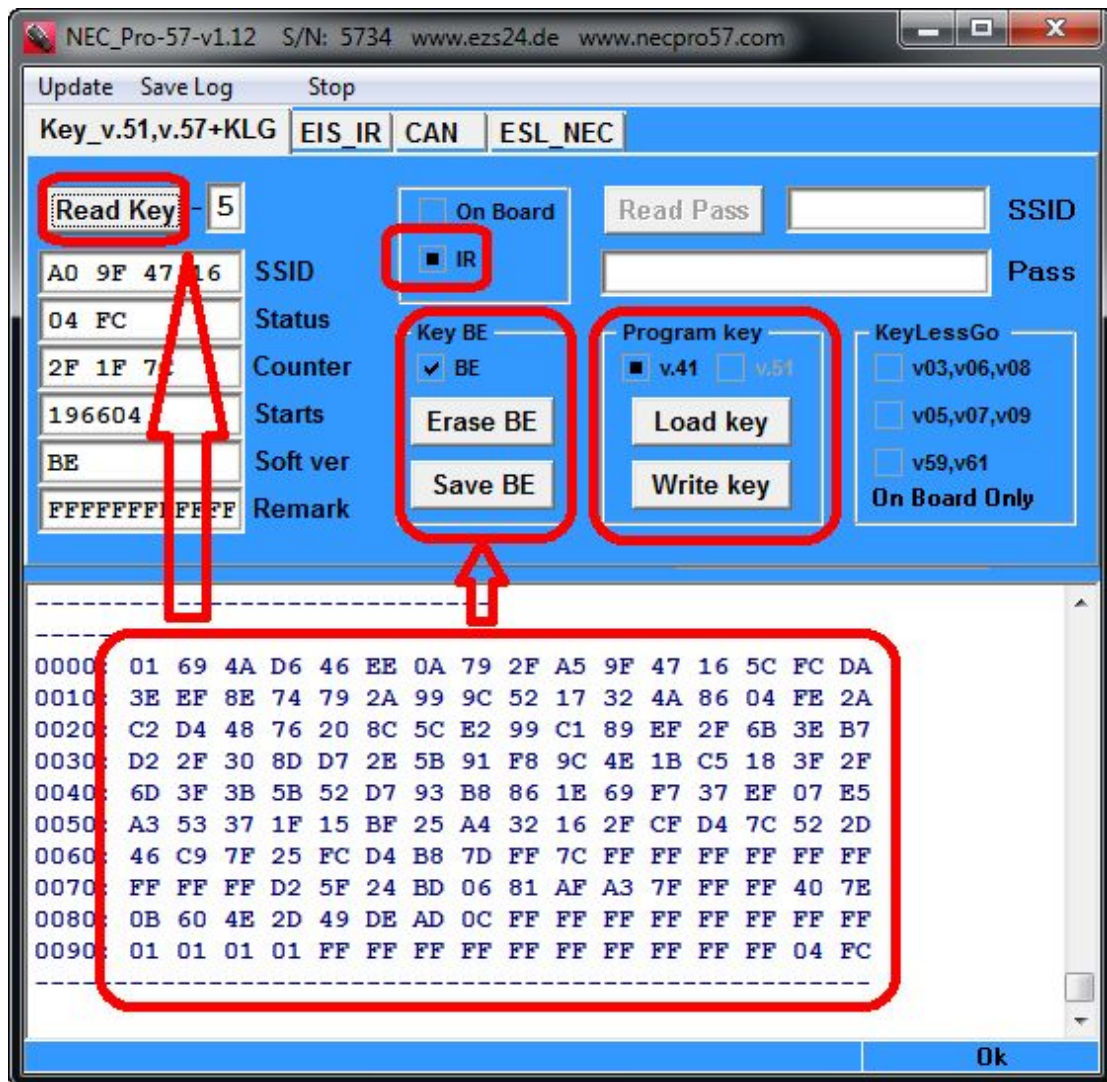
#### Step 8.1.VIN write new



### Function 9. Read and Write BE Key

#### Step 9.1 Read and Write BE Key

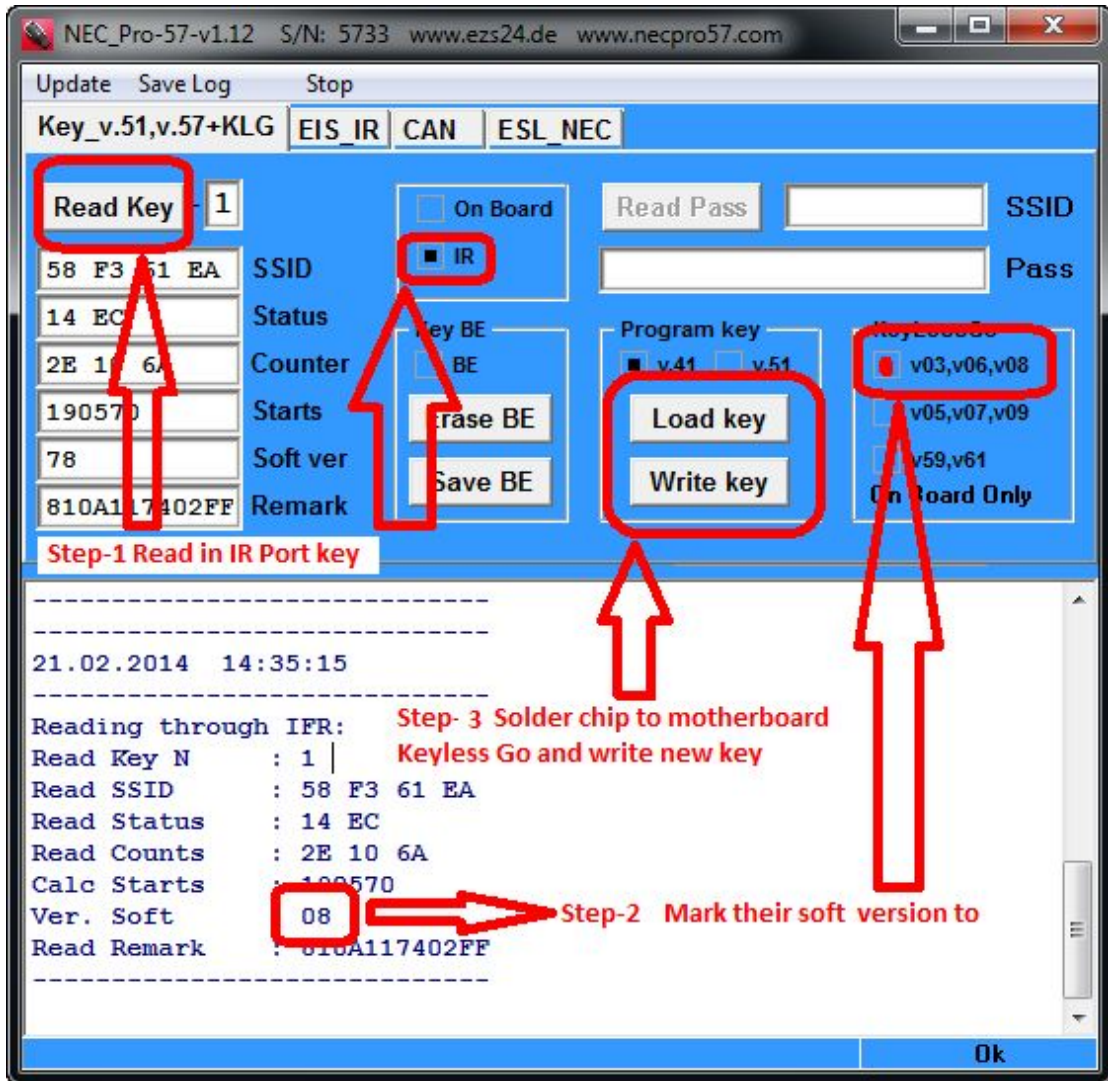




### Function 10. Keyless Go Key Programming

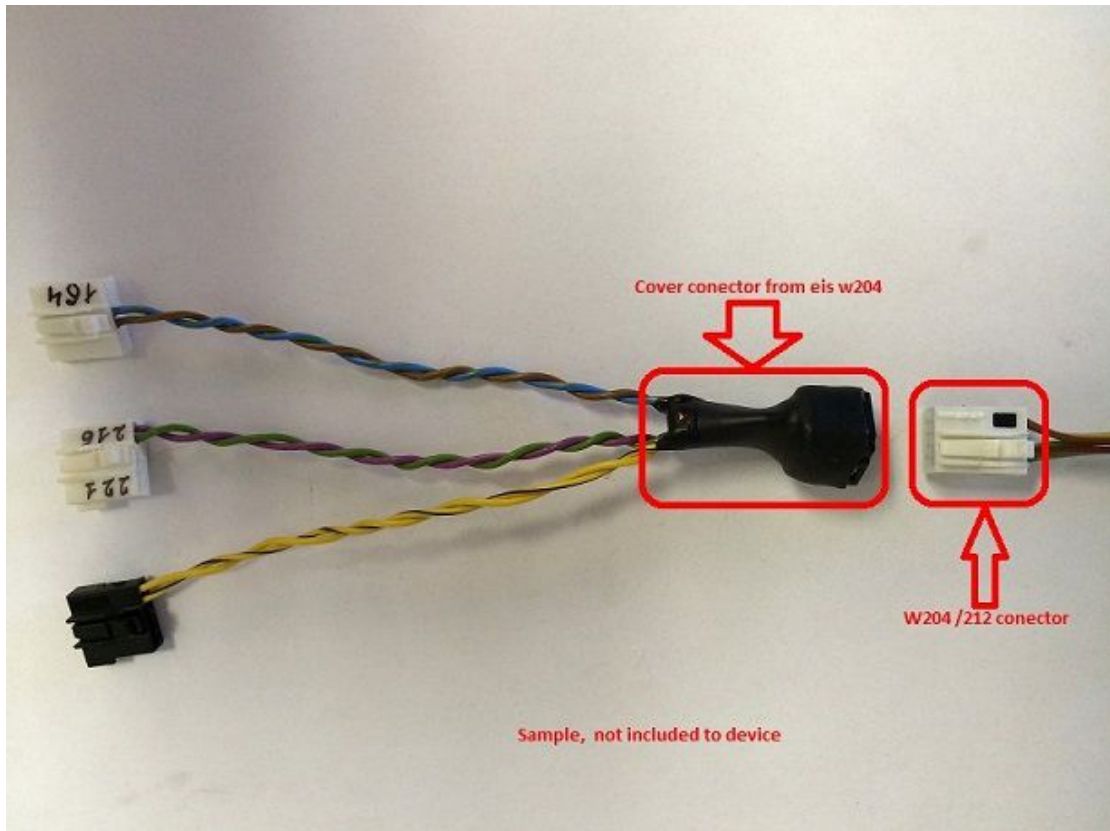
Please learn the following steps to perform the Keyless Go Key Programming

#### Step 10.1. Keyless Go Key Programming



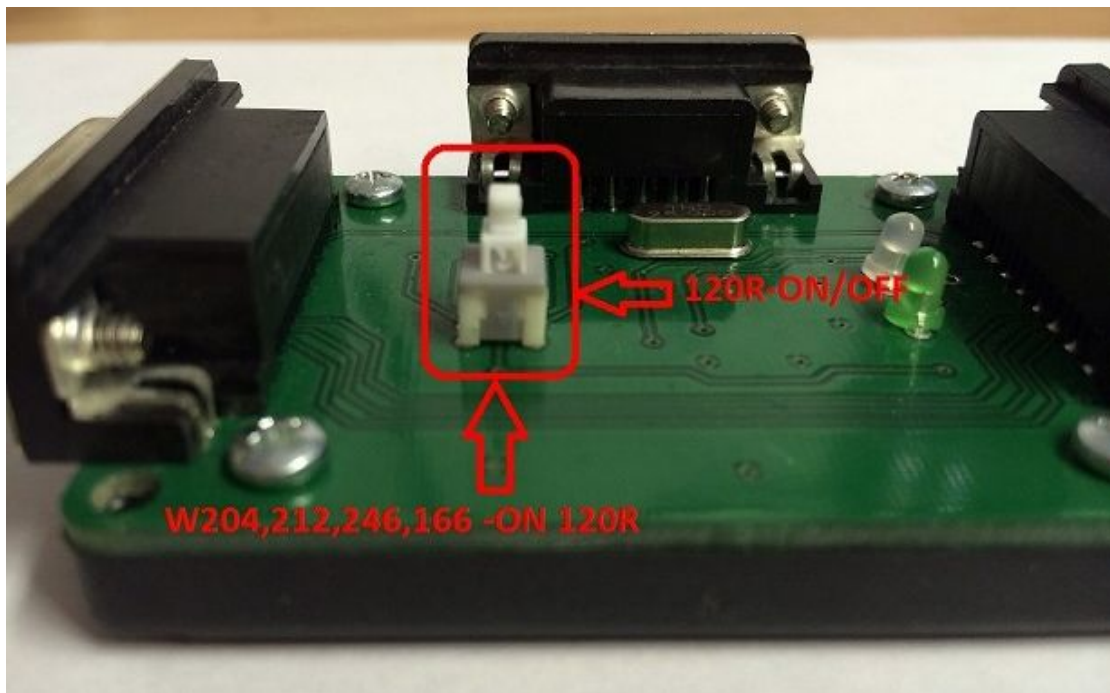
**Function 11. Sample Cable**

**Step 11.1.** cable W221, W216, W164



## Function 12. Can Adapter incl. 120R

### Step 12.1. CAN Adapter incl. 120 R

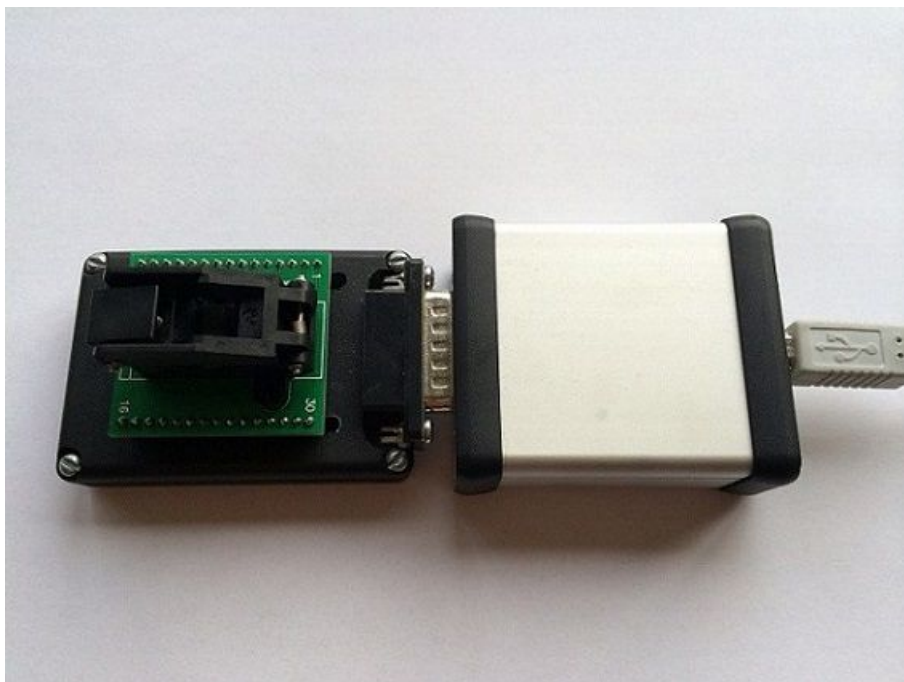


## Function 13. Read Adapter

**Step 13.1. Key Read Adapter IR**

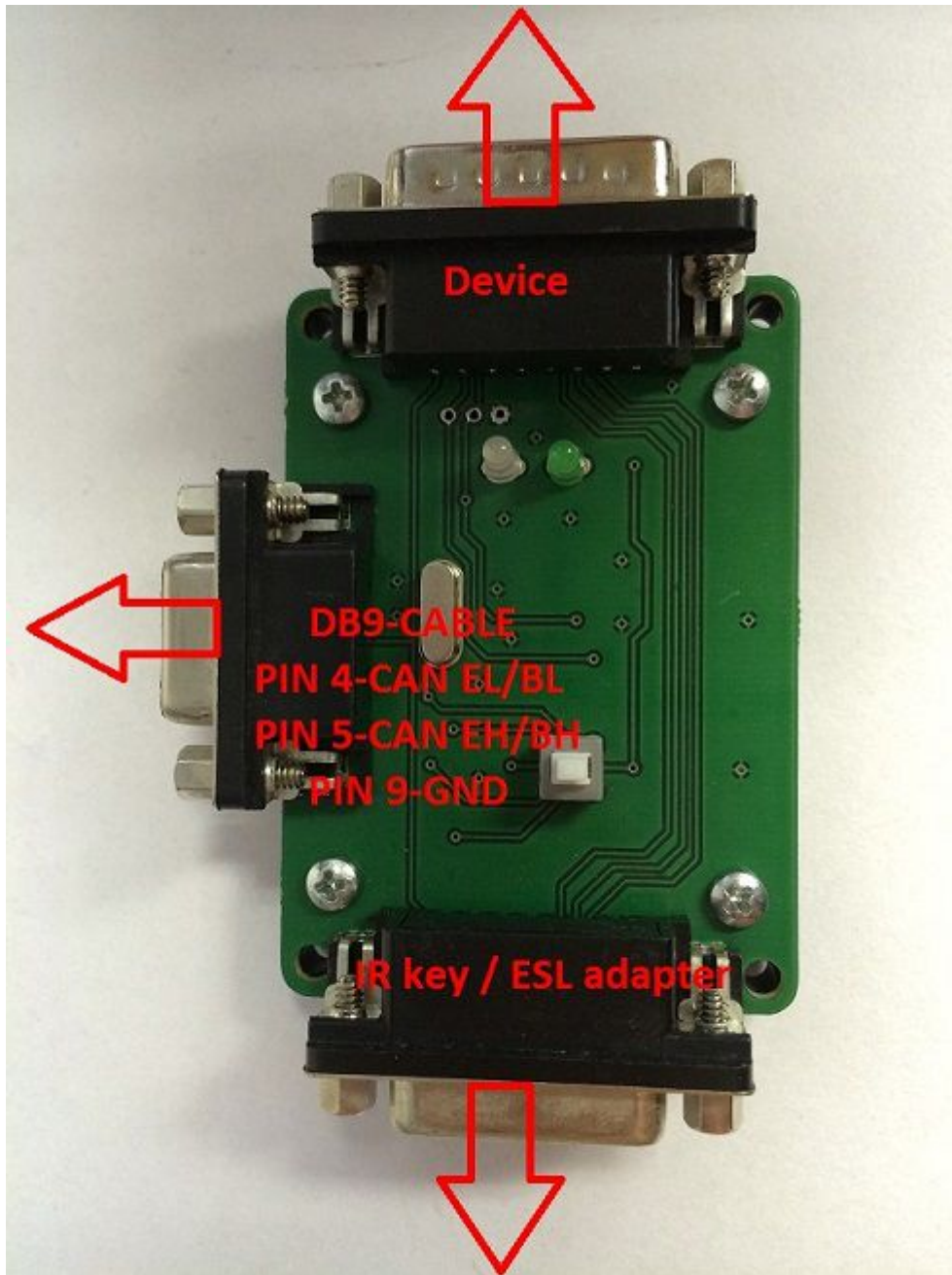


**Step 13.2. PCB Nec Adapter**



**Function 14. Can-pin Connector**

**Step 14.1. CAN- PIN Connector**



**Function 15. EIS Model Old and New**

**Step 15.1. EIS Model Old and New**

