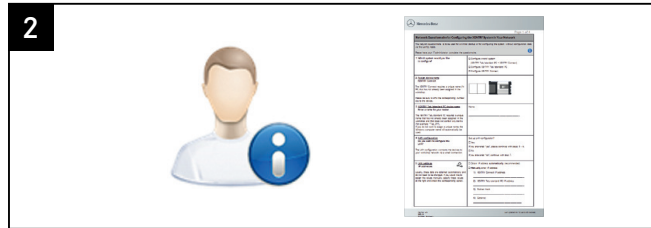


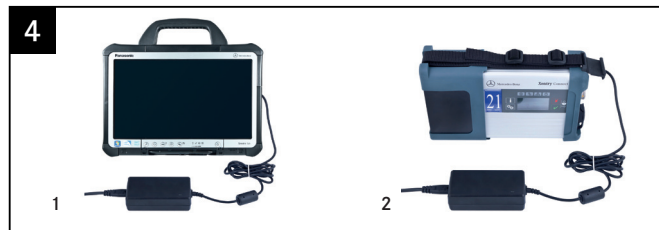
Please have the XENTRY Tab/XENTRY Tab 2 and XENTRY Connect MAC addresses (Wi-fi and LAN) enabled for the workshop network by your IT supervisor/IT service provider in advance. You can read off the MAC addresses (Wi-fi and LAN) from the stickers on the devices.



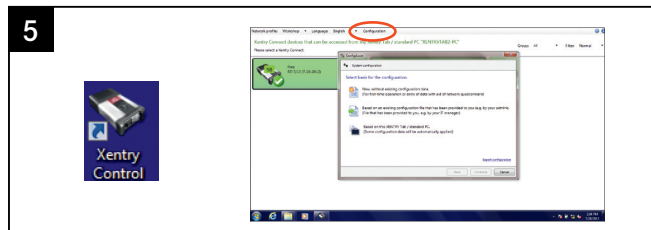
Your case already contains a printed empty network questionnaire. Please have it filled out by your IT supervisor. **Important!** Do not continue the initial startup until the questionnaire has been filled out completely! This will help to avoid additional work.



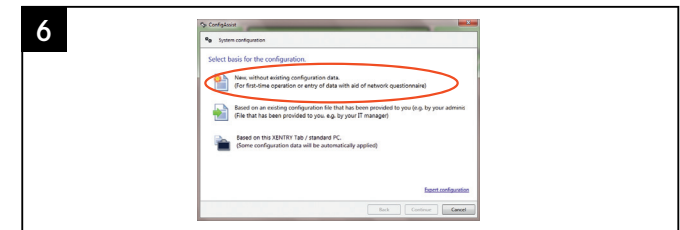
The latest software is already installed on both devices. You can start the network configuration now. For details, see step 4.



Completely charge both devices and turn on the XENTRY Connect. Starting the XENTRY Connect for the first time can take up to 10 minutes. Configuration can be started whilst both devices are still charging. **Attention!** Be sure to use the correct power supply units!

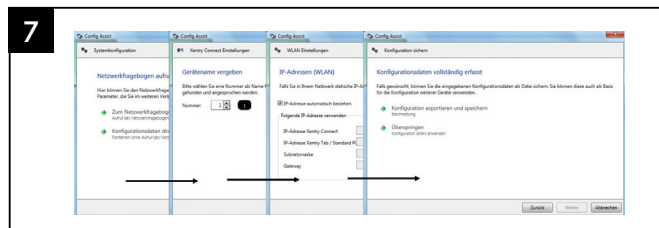


Start the XENTRY Control software using the desktop link on the XENTRY Tab/XENTRY Tab 2. ConfigAssist is already open; if not, call up ConfigAssist via the "Configuration" menu. **Note!** If you work with static IP addresses, you must perform the configuration via the expert dialog and transfer the configuration to the XENTRY Connect via a USB stick.



Please have the filled out network questionnaire on hand: How would you like to configure the devices?

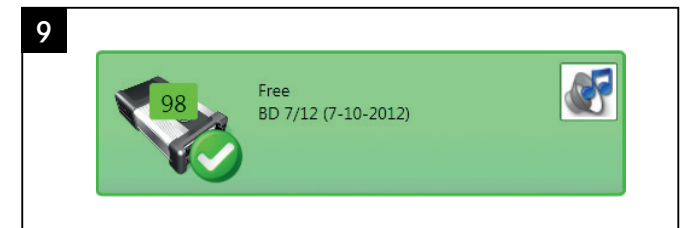
Select one of the 3 options. Recommended selection: "New without existing configuration data".



Please continue following the ConfigAssist dialogs and enter the required data from the network questionnaire. Next, switch on the XENTRY Connect. This has already finished installing.



In the final steps, the configuration is transferred from the XENTRY Tab/XENTRY Tab 2 to the XENTRY Connect. You will be prompted to interconnect the devices using the supplied black Ethernet connecting cable. This cable connection is required only for configuration, not for operating the XENTRY Kit/XENTRY Kit 2.



If configuration is successful, a green tile with the number of the XENTRY Connect will be displayed. You can now use the devices: Remove the black Ethernet connecting cable to work via WLAN and with an online connection. Then click on the green tile in order to read out the data for ordering the StartKey.