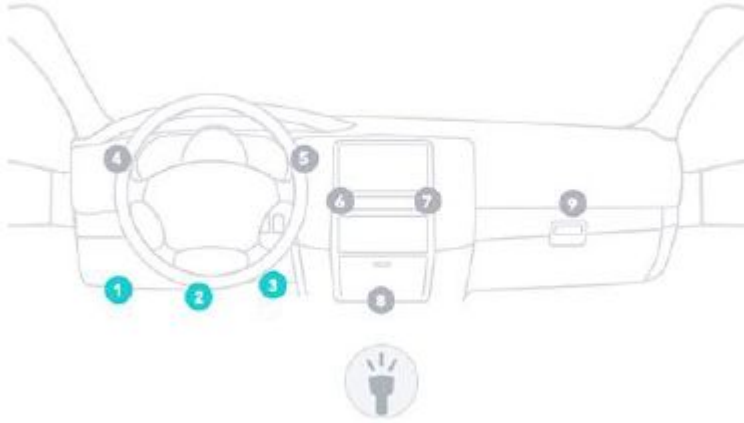


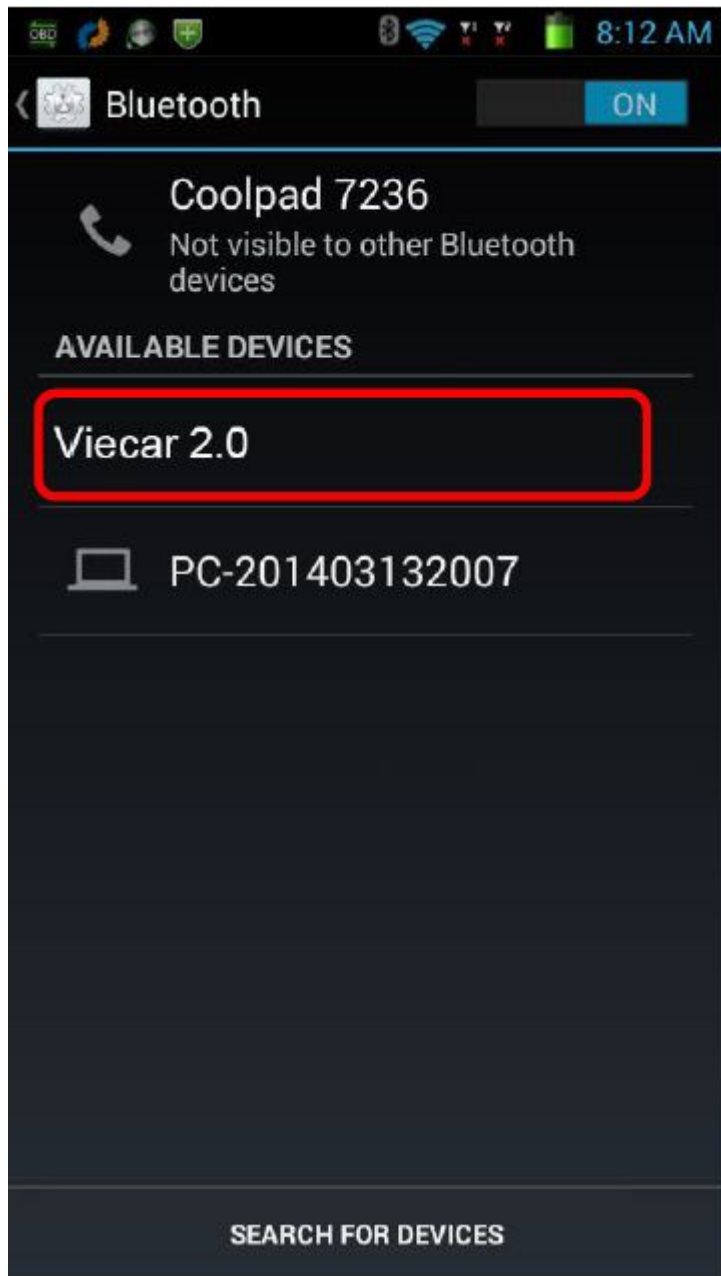
Viecar 2.0 Software User's Manual

Use Viecar 2.0 on Android device

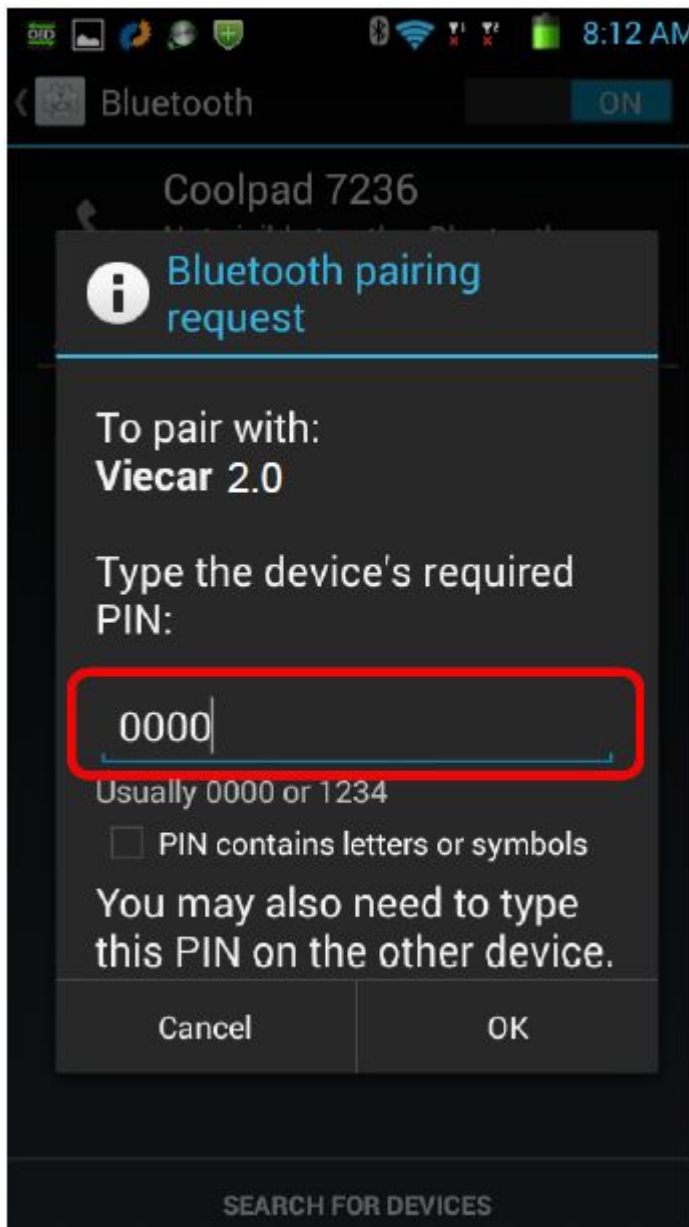
1. Connect device to your car's obd2 port



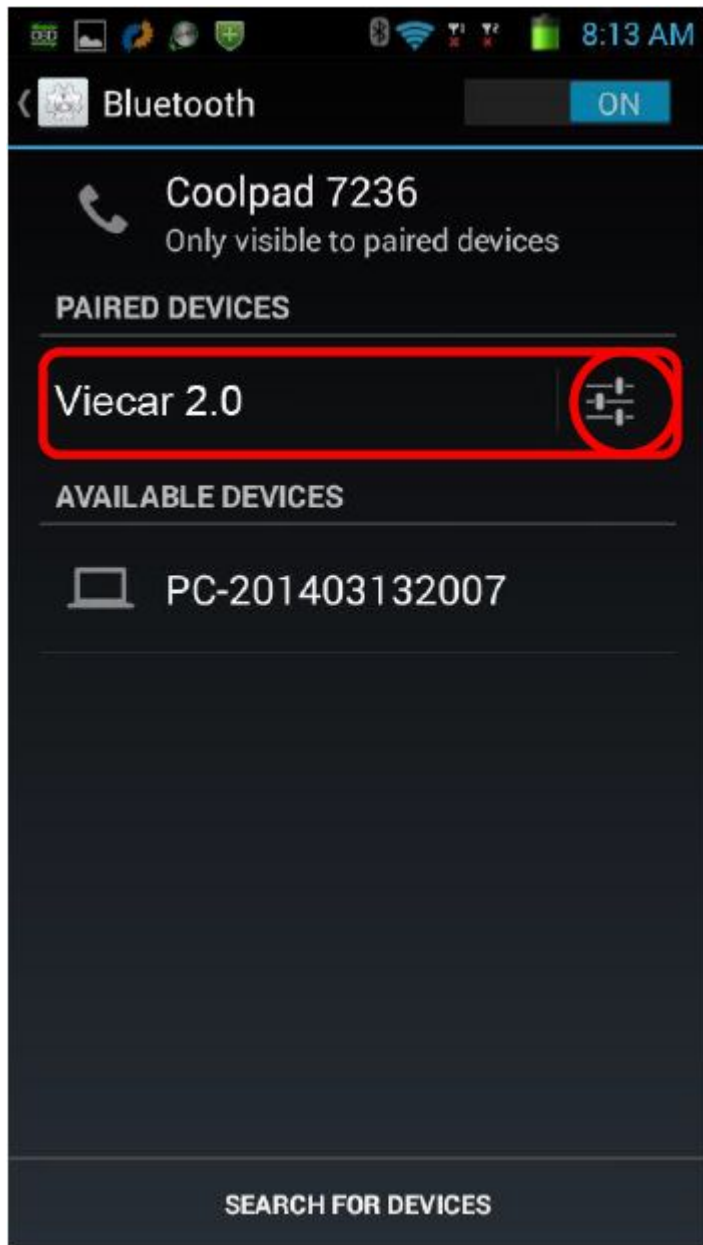
2. Download and install Torque software to your Android device.
3. Open bluetooth setting on your Android device, search Viecar 2.0 bluetooth.



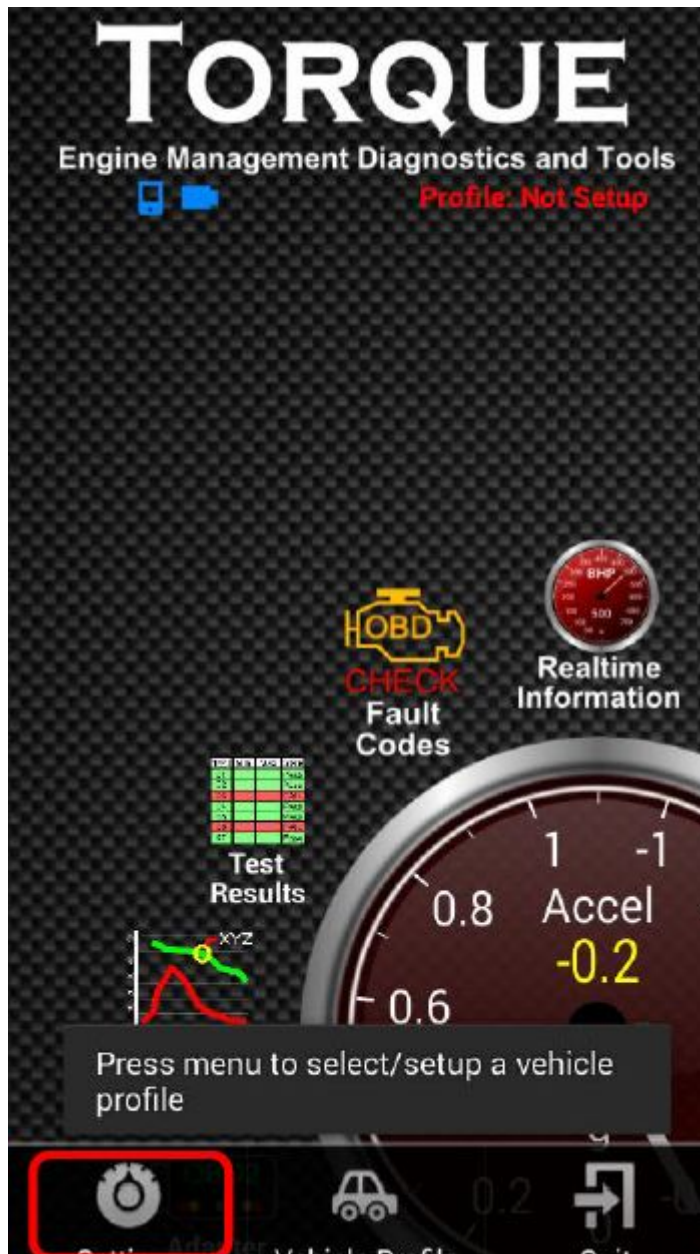
4. Connect Viecar 2.0 bluetooth, input pair password “0000”



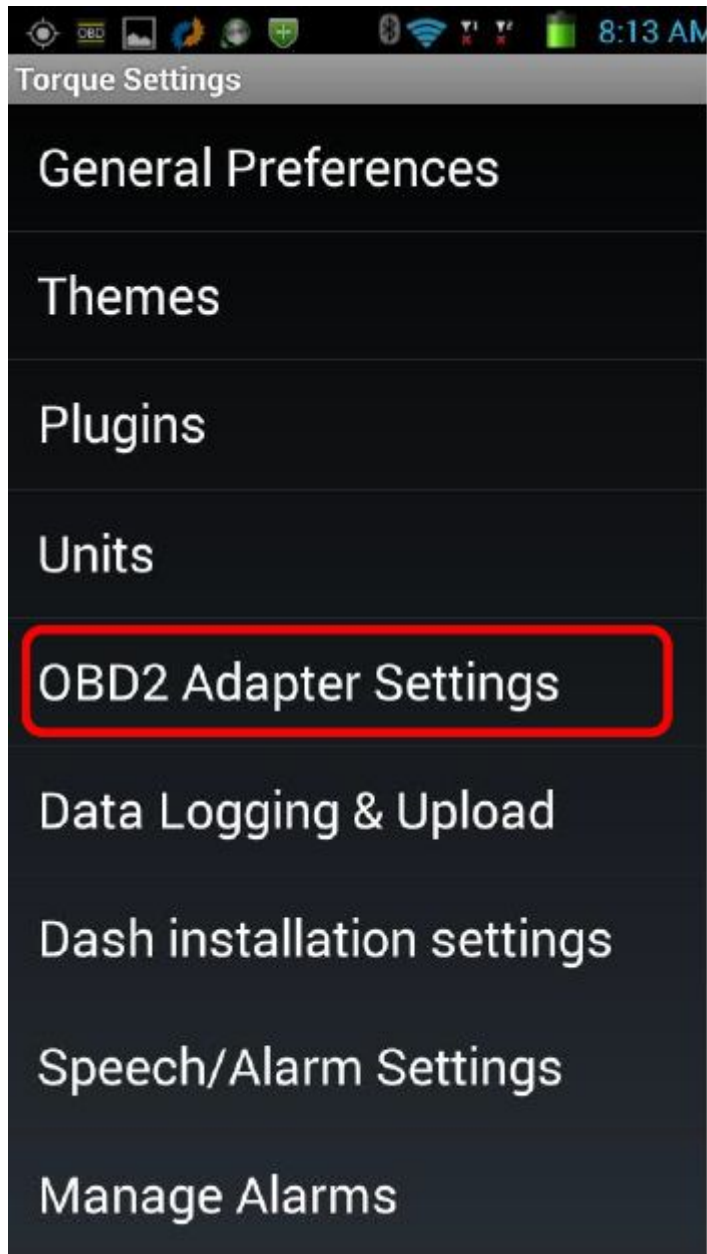
5. Device connect ok.



6. Run Torque software and click Menu.



7. Select OBD2 Adapter Setting



General Preferences

Themes

Plugins

Units

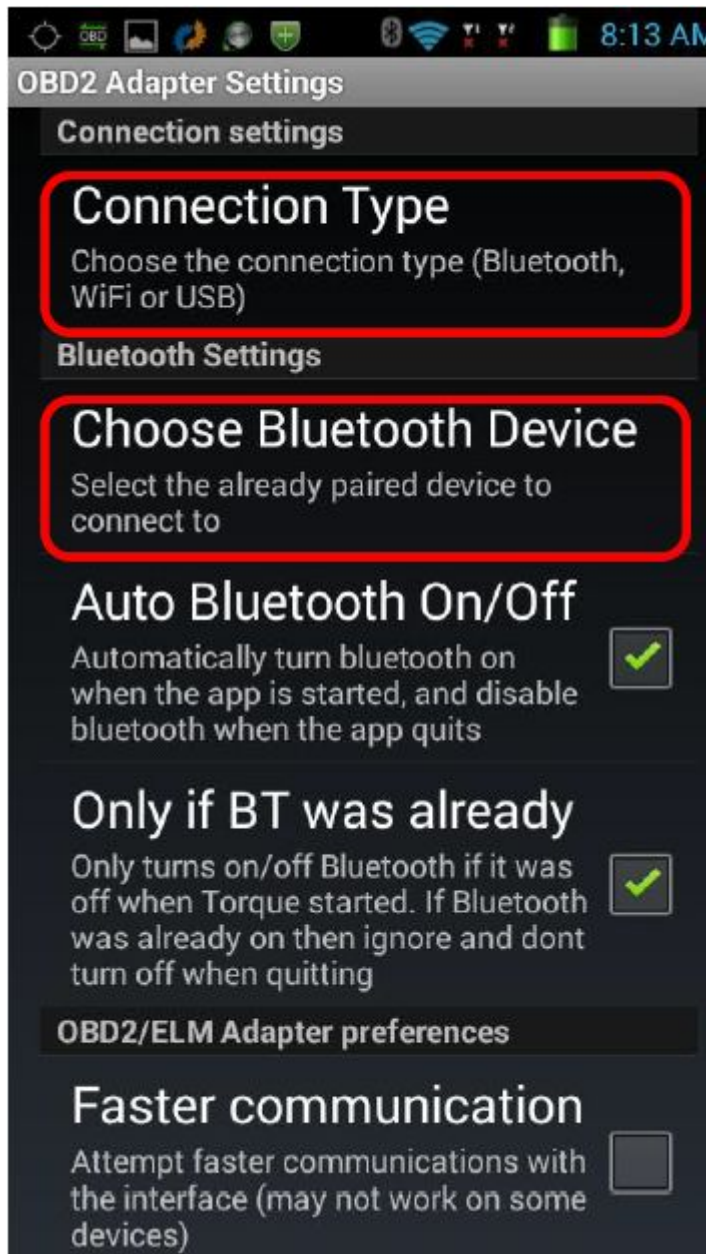
OBD2 Adapter Settings

Data Logging & Upload

Dash installation settings

Speech/Alarm Settings

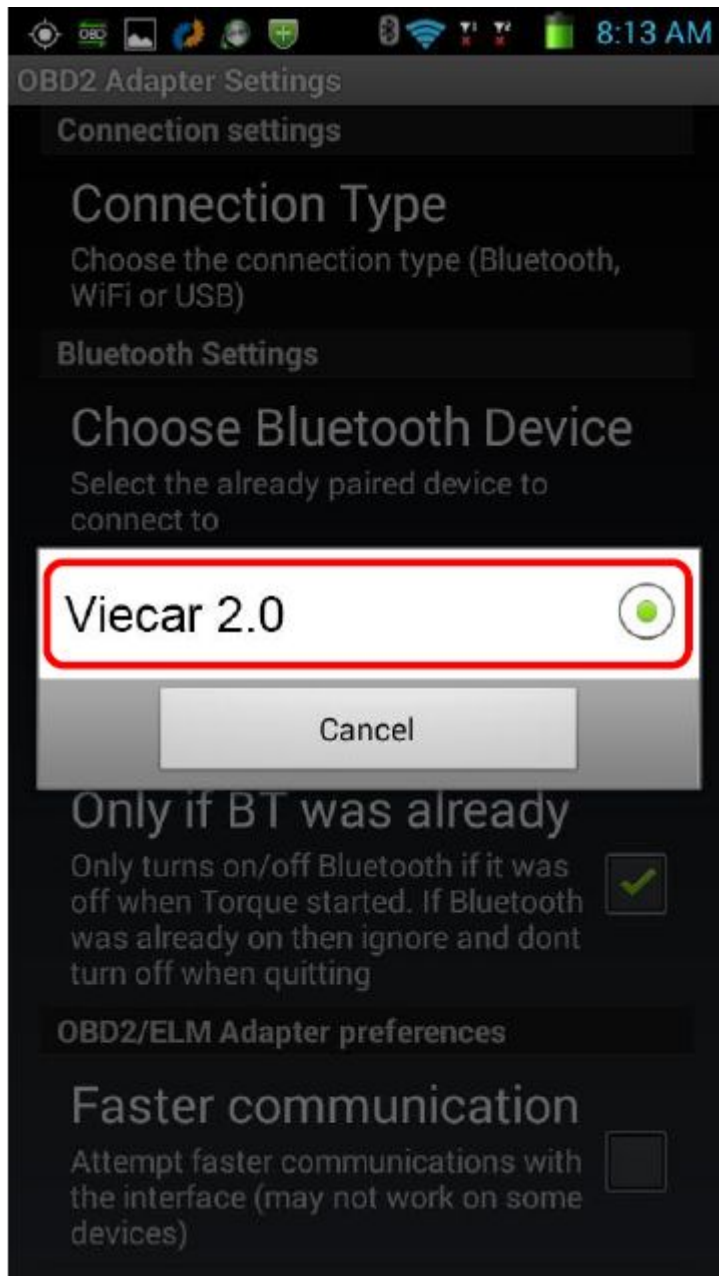
Manage Alarms



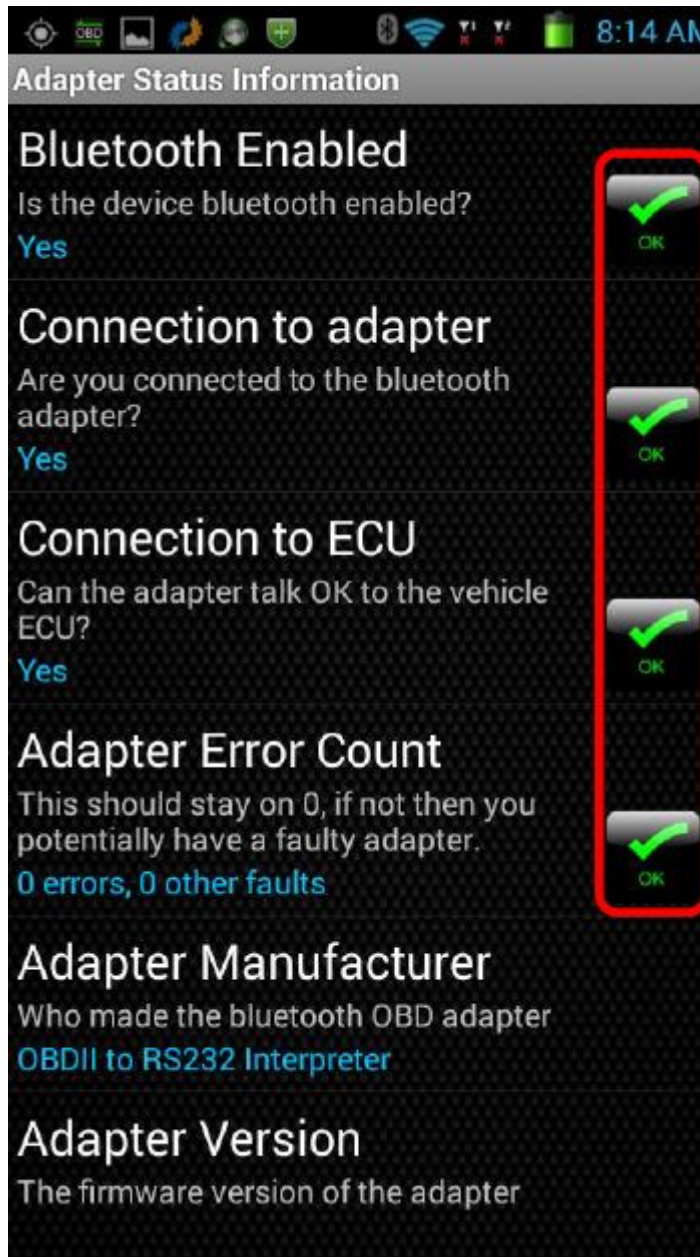
8. Choose connect via Bluetooth.



9. Bluetooth device choose Viccar 2.0



10. Connect success.



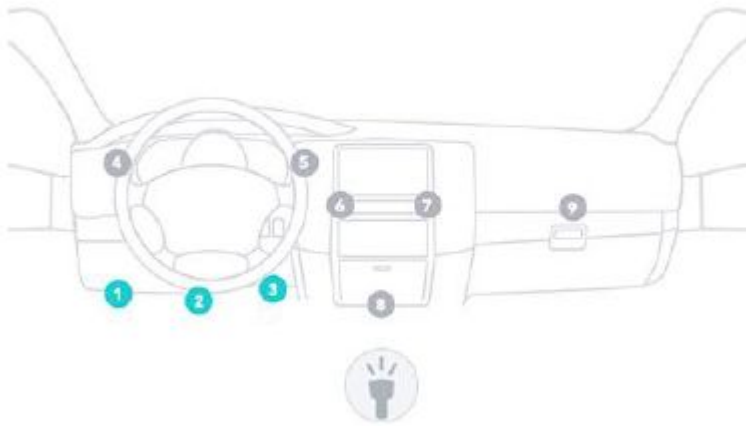
11. Dashboard information, you can add more dashboard on the blank by long press.

12.



Viecar 2.0 Connect with Windows System

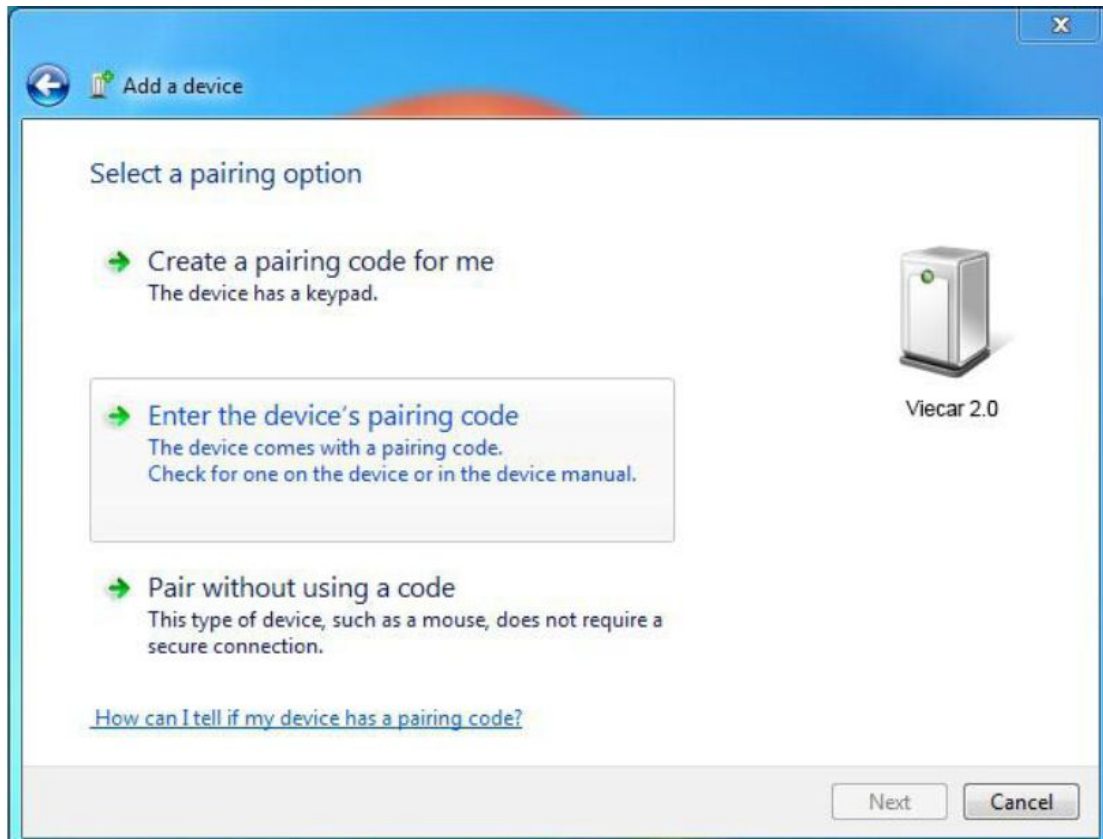
1. Connect device to your car's obd2 port



2. Download and install ScanMaster-ELM software.
3. Open Windows Bluetooth, choose add a device and search Viecar 2.0.



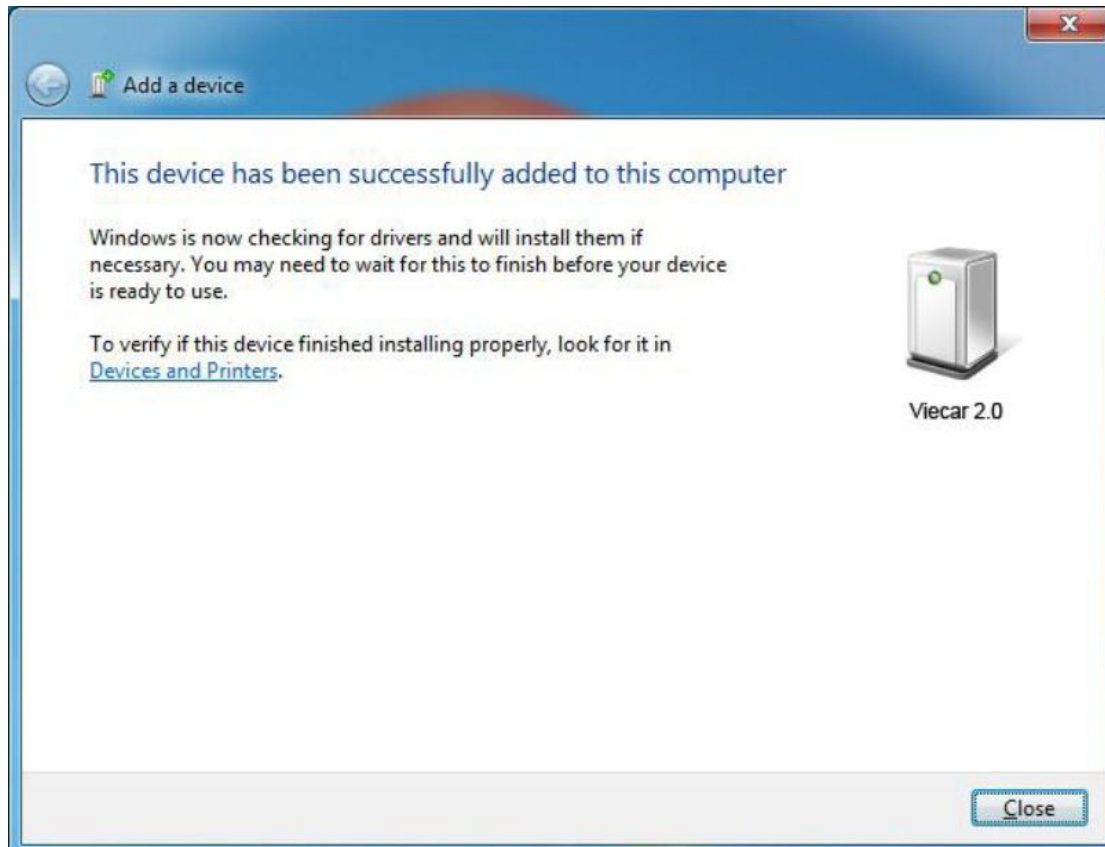
4. Double click Viecar2.0, Select a pairing option and choose Enter the device's pairing code



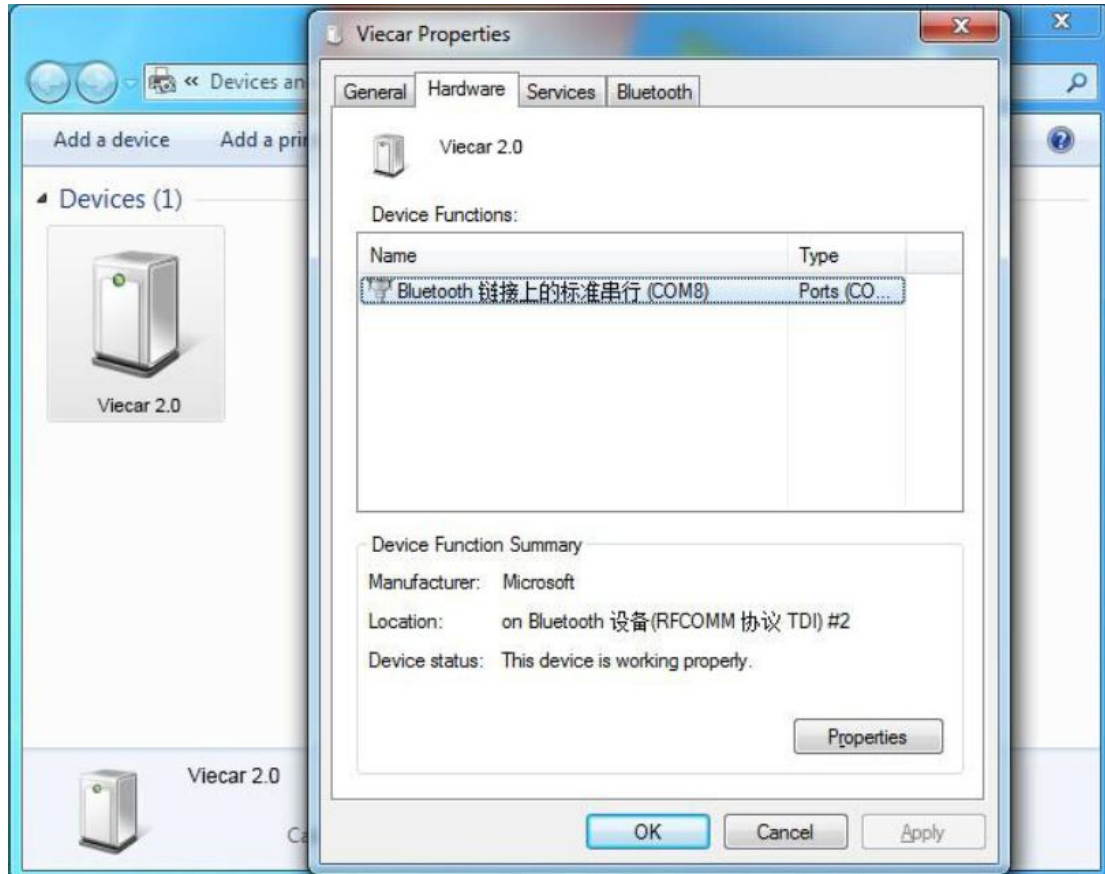
5. Enter 0000 and choose next.



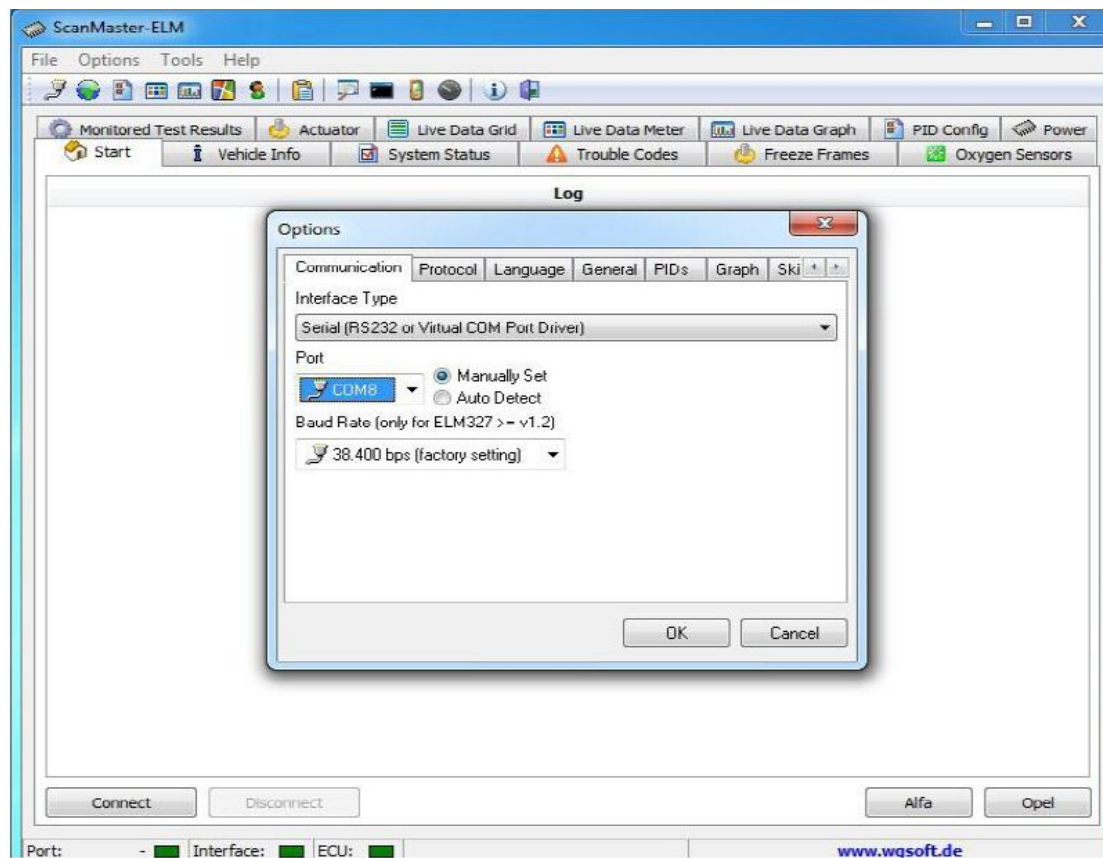
6. It shows bluetooth match.



7. Open Show bluetooth device, check COM Port Viecar 2.0 used in device functions:



8. Start ScanMaster-ELM software, click communication to set up COM Port, click OK to finish set up.



9. Click connect to Viccar 2.0, when it shows connect ok, you can read your car information.

