

2.3 Software upgrading

2.3.1 Download and install V30 update client

Step1: Download the V30 **update client** from
Autoboss website

<http://www.autoboss.net>

Step2: Install the **V30 update client** on your PC.

2.3.2 Check V30 S/N and password

Check the S/N: Refer to 2.2.5 Version
information on page11 of this manual;

Get the password:

Click the button **[Activate]** to get the original
register password as shown in left Fig.

2.3.3 Upgrading instructions

2.3.3.1 Start the V30 upgrading software

Double click to run the **upgrading client program** on your PC and you can get an update interface as shown in Fig 2-1.



Fig 2-1 upgrading client start interface

2.3.3.2 Login the server

- (1) Input the serial number to 'S/N box' then click the button **[Connect to server]** you can get the Fig 2-2 interface.
- (2) Server. The default server is 'www.autoboss.net'. Normally you need not to change the server.
- (3) Input the password and click **[OK]**.

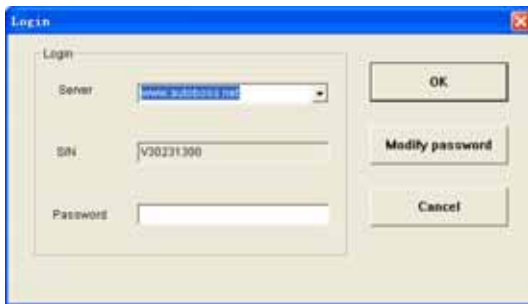


Fig 2-2 login interface

Note:

Be sure both of the S/N and password are correct. Please pay attention to distinguish the capital from the lowercase;
Some time the login need a long time because of the web speed, please exit and retry;
The firewall can effect the login. If you can not login, please make sure the web is connected, or please check if the firewall blocked it. If the firewall blocked it please stop the firewall first then retry. For detailed operation instructions please contact your local distributor or contact Autoboss Customer service center.

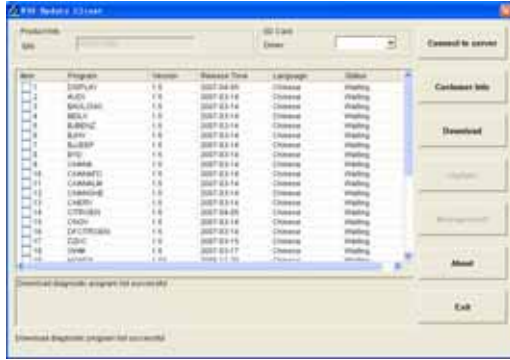


Fig2-3 Program list interface

(4) After login succeeded, the window will display the available diagnosis program for upgrading as shown in Fig2-3, just waiting some seconds for downloading the list.

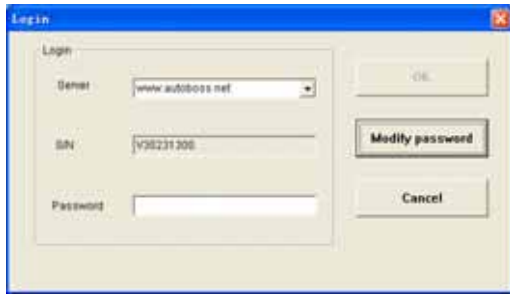


Fig2-4

2.3.3.3 Modify password

After login succeeded, the user can change the original register password.

Operation instruction:

- (1) Click the button [Connect to server] on interface as shown in Fig.2-3, you can get the interface as shown in Fig.2-4.
- (2) Click the button [Modify password] to get the password modify interface as shown in Fig.2-5. After input the current password and new password, click [OK] to confirm. You can get the hint of modify successful if the modify accepted.

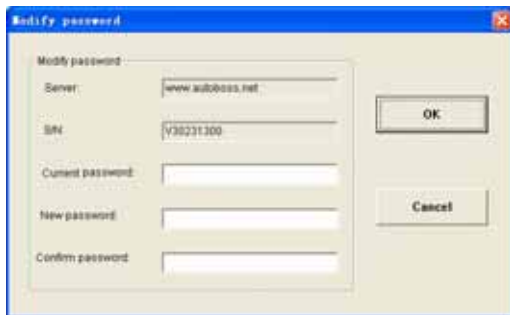


Fig2-5 Modify password interface

Note: If you forget your password, please call **Autoboss customer service center.**



Fig2-6 Modify customer info interface

2.3.3.4 Input customer information

When you login to V30 update client first time you must fill in your detailed information correctly, or you are not allowed to download the program.

Operation instruction:

Click the button **[Customer info]** after login succeed. You can see the interface as shown in Fig2-6. Input your information to the relative box and click **[OK]** to save the information to Server.

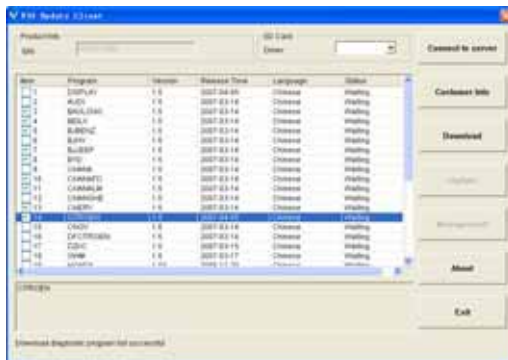


Fig.2-7 Download interface

2.3.3.5 Software download

After you saved the user information you can begin to download the program you needed.

Operation instruction:

- (1) Tick the check box before the program as shown in Fig.2-7;
- (2) Click download button in left column. You can see download status under status column. The program not begin to download is in black. If download successful you can see the characters are in blue or it will be in red.

Note: Everytime you can at most choose 10 items to download together.

- (3) The programs will be downloaded to your PC driver automatically.

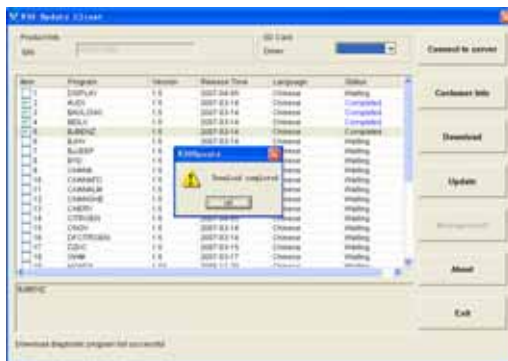


Fig.2-8 Download interface 2

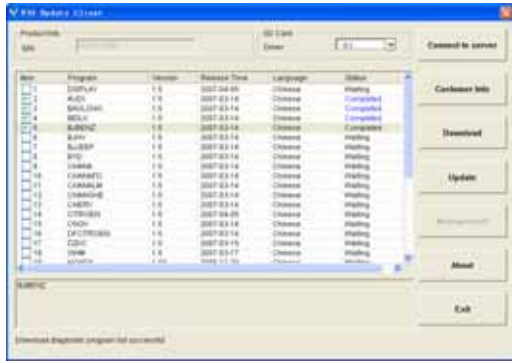


Fig.2-9 Software installation interface

2.3.3.6 Update

- (1) Take out the SD card from V30 main unit;
- (2) Put the SD card into SD Card-Reader;
- (3) Connect the Card-Reader to PC USB port;
- (4) Select the SD card driver on the top-right side of software installation interface as shown in Fig.2-9;
- (5) Click the button **[Update]**, the selected programs which have already downloaded to PC will be installed to SD card automatically.

Note: Make sure the update destination is the SD card driver.

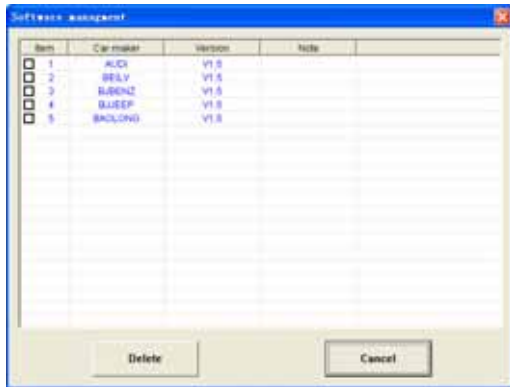


Fig.2-10 software installation interface

2.3.3.7 Software Management

You can delete some due version on the SD card by the function of Software management.

Operation instruction:

Click the button **[Software management]** you can get the interface as shown in left Fig. Select the software you not needed and click **[Delete]**. **The selected software can be uninstalled automatically.**

2.3.3.8 Exit

After finished all of the steps, click **[Exit]** to exit the update client